



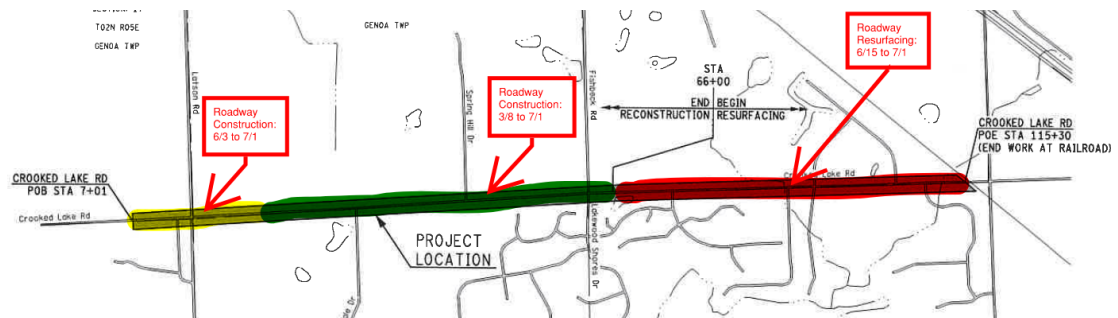
Contact: LCRC 517-546-4250

Construction Advisory Crooked Lake Road Latson Rd to Dorr Rd

The following project is expected to be underway soon. As always, weather adversities, changes in contractor’s schedules, or other factors could alter the timing described in this advisory. The Livingston County Road Commission will issue revised advisories for those projects with high traffic impacts.

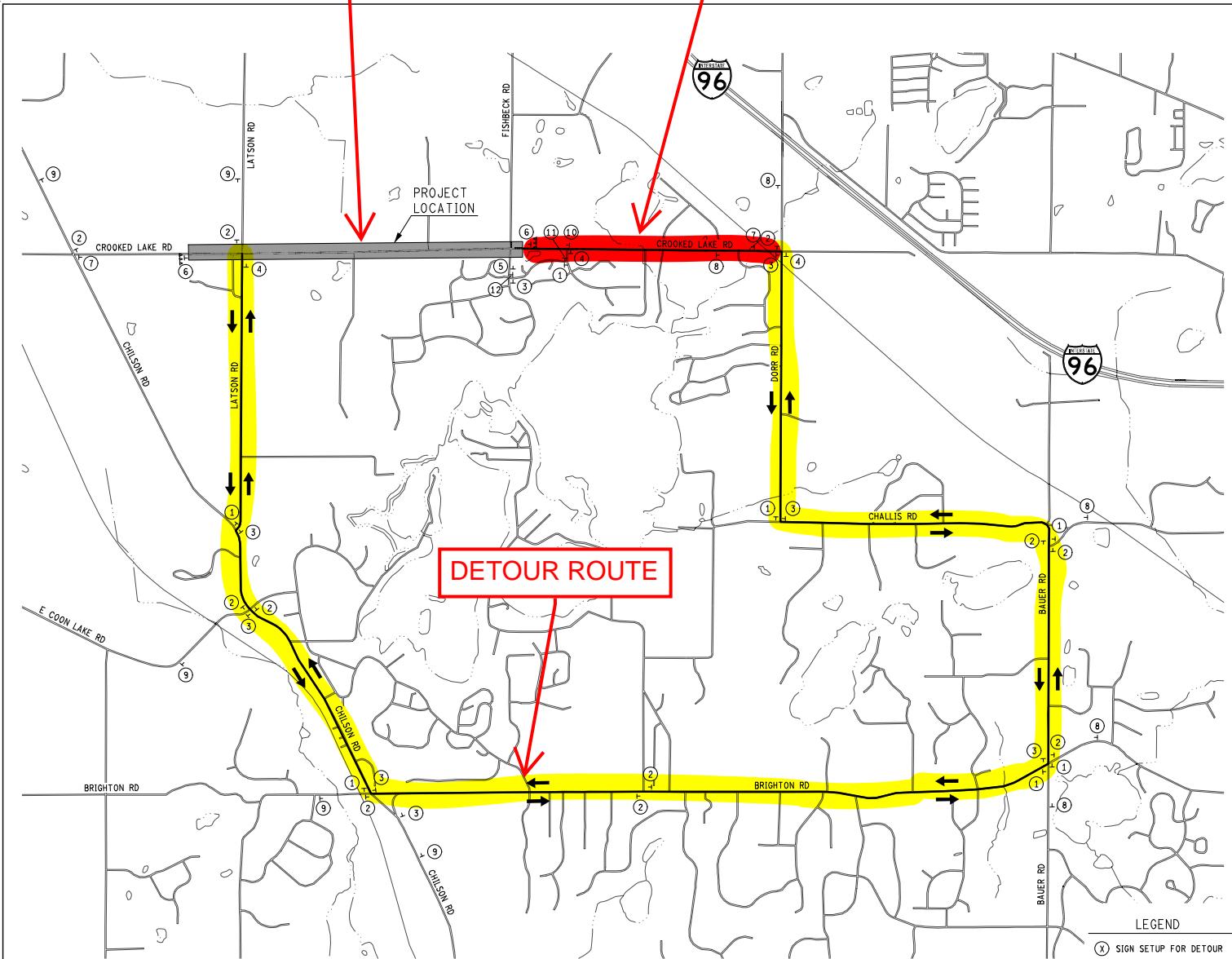
- Township: Genoa Township
- Roadway: Crooked Lake Road from Latson Rd to Dorr Rd
- Starting Date: Tuesday, March 8, 2022
- Completion Date: Friday, July 1, 2022
- Project Purpose: Roadway Construction and Paving, and Roadway Resurfacing
- Traffic Impact: High Traffic Impact. Crooked lake Road will be **CLOSED** to through traffic during the construction project. Access to the residential homes will be maintained throughout the project. See the attached detour sheet for further information.

Access to the school will be maintained from Latson Rd while school is in session.



ROADWAY CONSTRUCTION

ROADWAY RESURFACING



DETOUR ROUTE



SPECIAL #1
CROOKED LAKE
DETOUR
M4-9L
SIGN SETUP #1

SPECIAL #1
CROOKED LAKE
DETOUR
M4-SIMODI
SIGN SETUP #2

SPECIAL #1
CROOKED LAKE
DETOUR
M4-9R
SIGN SETUP #3

SPECIAL #1
CROOKED LAKE
END DETOUR
M4-8g
SIGN SETUP #4

ROAD CLOSED AHEAD
W20-3
CROOKED LAKE
SPECIAL #1
SIGN SETUP #5

ROAD CLOSED TO THRU TRAFFIC
R11-2
SIGN SETUP #6

ROAD CLOSED TO THRU TRAFFIC
R11-4
SIGN SETUP #7

SPECIAL #2
CROOKED LAKE
CLOSED FISHBECK
TO LATSON
FOLLOW DETOUR
SIGN SETUP #8

SPECIAL #3
CROOKED LAKE
CLOSED LATSON
TO FISHBECK
FOLLOW DETOUR
SIGN SETUP #9

SPECIAL #4
LAKWOOD SHORES
DETOUR
M4-9L
SIGN SETUP #10

SPECIAL #4
LAKWOOD SHORES
DETOUR
M4-9R
SIGN SETUP #11

SPECIAL #4
LAKWOOD SHORES
END DETOUR
M4-8g
SIGN SETUP #12

LEGEND
 (X) SIGN SETUP FOR DETOUR
 — DETOUR ROUTES
 *** TYPE III BARRICADE(S)

DETOUR MAP

FINAL ROW PLAN REVISIONS				SUBMITTAL DATE: 1						NO SCALE	DATE: 1/4/22	CS:	MAINTAINING TRAFFIC DETOUR MAP CROOKED LAKE (LATSON TO DORR)	DRAWING	SHEET
NO.	DATE	AUTH	DESCRIPTION	NO.	DATE	AUTH	DESCRIPTION				FILE: CL_Detour_001.dgn	DESIGN UNIT: TETRA TECH		JN:	CRK/KE MOT 001