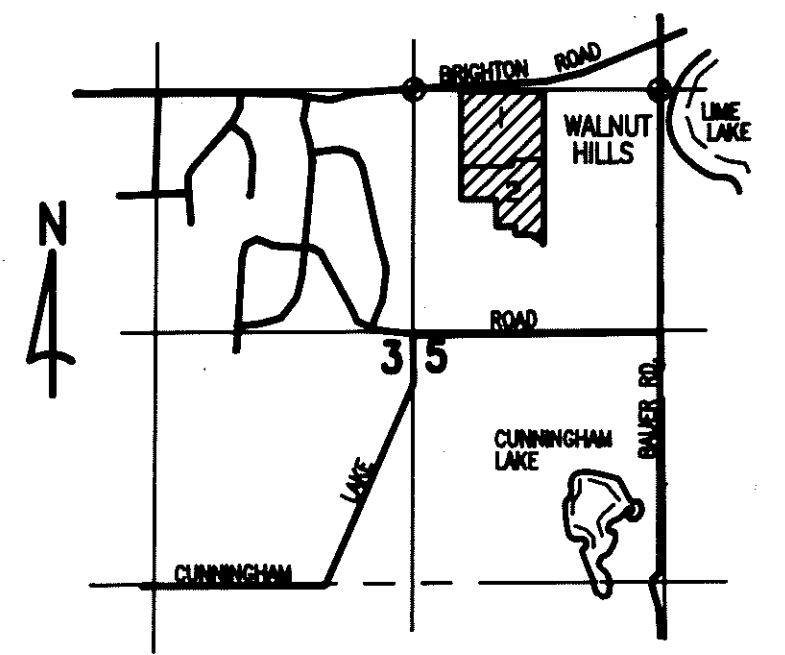
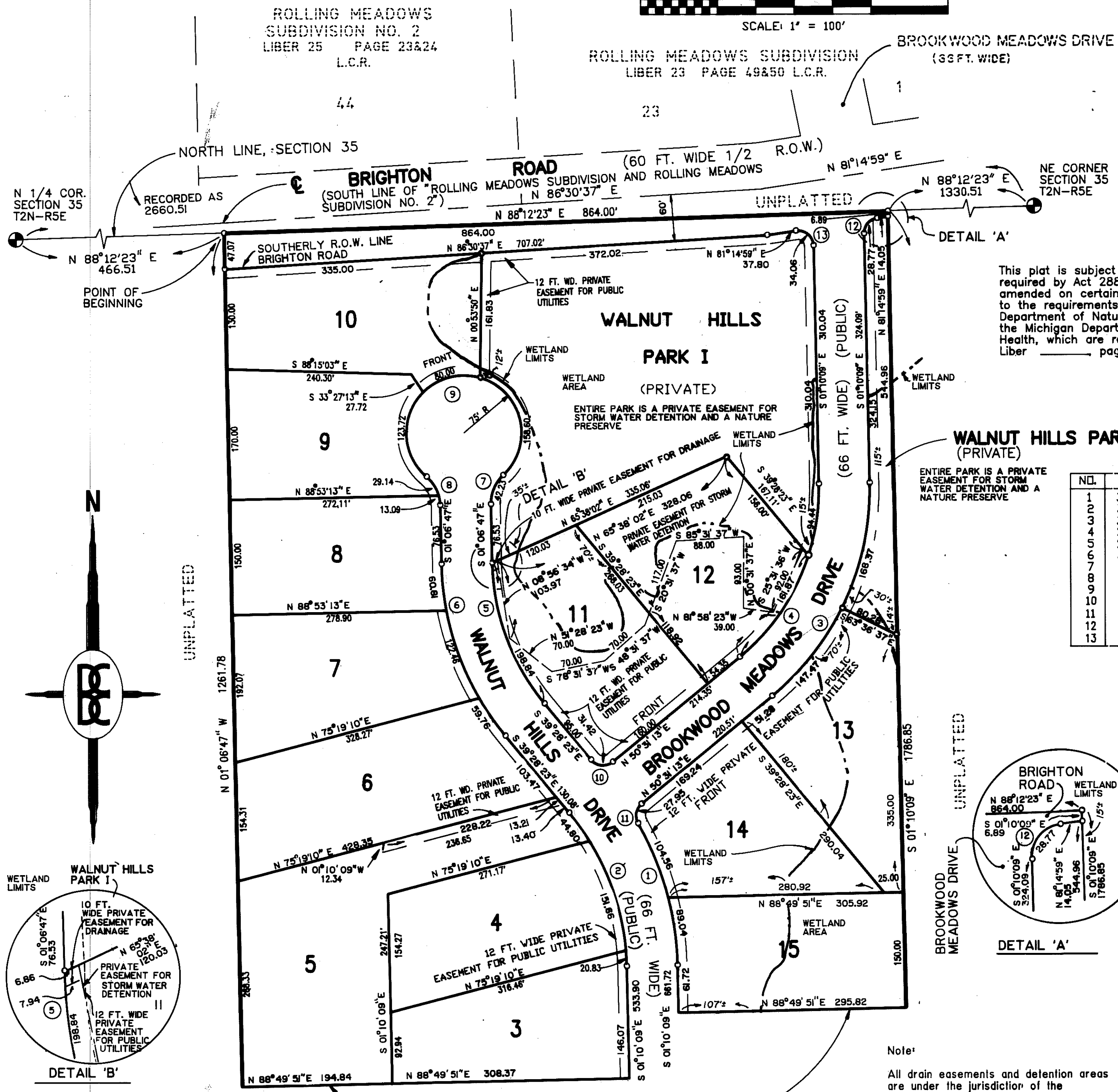


WALNUT HILLS

A SUBDIVISION OF PART OF THE NE 1/4 OF SECTION 35,
T2N-R5E, GENOA TOWNSHIP, LIVINGSTON COUNTY, MICHIGAN



SCALE: 1" = 100'



LOCATION MAP
SCALE: 1" = 2000'

This plat is subject to restrictions required by Act 288 of 1967, as amended on certain lots with respect to the requirements of the Michigan Department of Natural Resources and/or the Michigan Department of Public Health, which are recorded in Liber _____ pages _____

CURVE DATA

NO.	RADIUS	DELTA	ARC	CHORD	BEARING
1	391.03	28°22'06"	193.60	191.64	S 15°21'13" E
2	325.03	38°18'14"	217.29	213.27	N 20°19'16" W
3	350.07	51°41'46"	315.86	305.25	N 24°40'44" E
4	284.07	51°41'46"	256.31	247.70	N 24°40'44" E
5	297.00	38°21'36"	198.84	195.15	N 20°17'35" W
6	363.00	38°21'36"	243.03	238.52	N 20°17'35" W
7	50.00	48°23'40"	42.23	40.99	N 23°05'03" E
8	50.00	48°23'40"	42.23	40.99	N 25°18'37" W
9	75.00	276°47'19"	362.32	99.60	N 88°53'12" W
10	20.00	90°00'00"	31.42	26.28	N 84°28'23" W
11	20.00	80°03'52"	27.95	25.73	S 10°29'40" W
12	20.00	82°25'08"	28.77	26.35	S 40°02'24" W
13	20.00	97°34'51"	34.06	30.09	S 49°57'35" E

LEGEND:

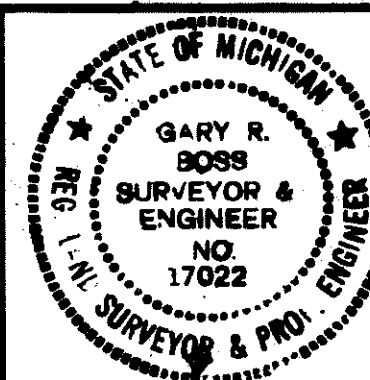
- All dimensions are shown in feet.
- All curvilinear dimensions are shown along the arc.
- The symbol "o" indicates a concrete monument, which is 4" in diameter x 36" long, encasing a 1/2" iron rod.
- The symbol (R) denotes a radial lot line.
- All lot markers are 1/2 inch iron rods and are 18 inches in length. (not capped)
- Bearings were established from the recorded Plat of "Rolling Meadows Subdivision No. 2", Liber 25 of Plats, page 23 & 24, Livingston County Records.

PREPARED AND DRAFTED BY:

Boss Engineering Company
3121 East Grand River
Howell, Michigan 48843

Gary R. Boss
Gary R. Boss

SURVEYOR'S SEAL

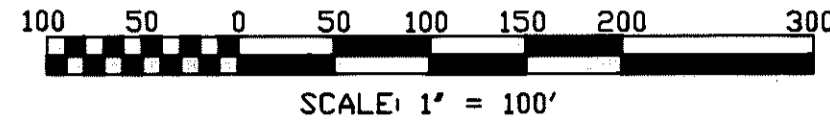
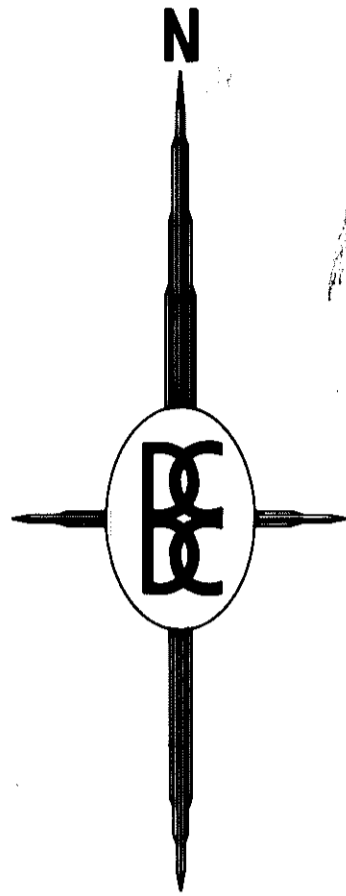


Note:
All drain easements and detention areas are under the jurisdiction of the Livingston County Drain Commission.

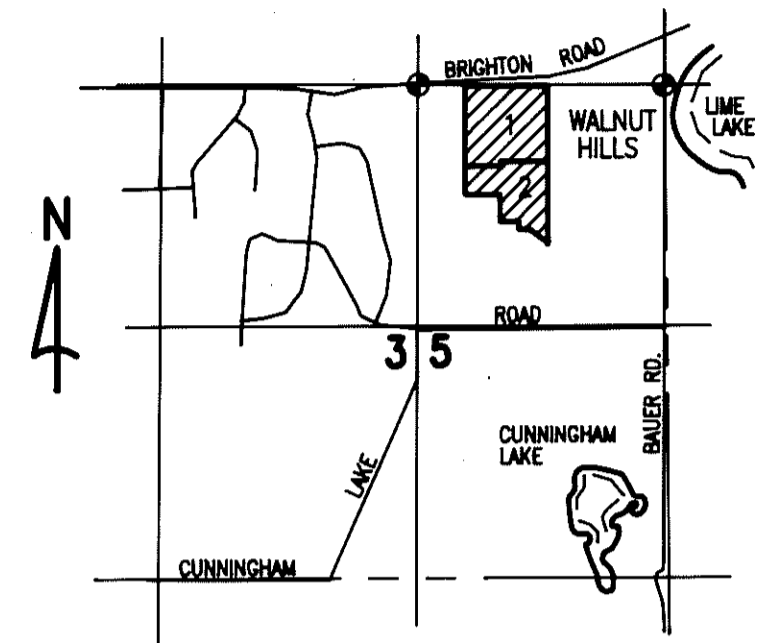
MATCH LINE SEE SHEET 2

WALNUT HILLS

A SUBDIVISION OF PART OF THE NE 1/4 OF SECTION 35,
T2N-R5E, GENOA TOWNSHIP, LIVINGSTON COUNTY, MICHIGAN

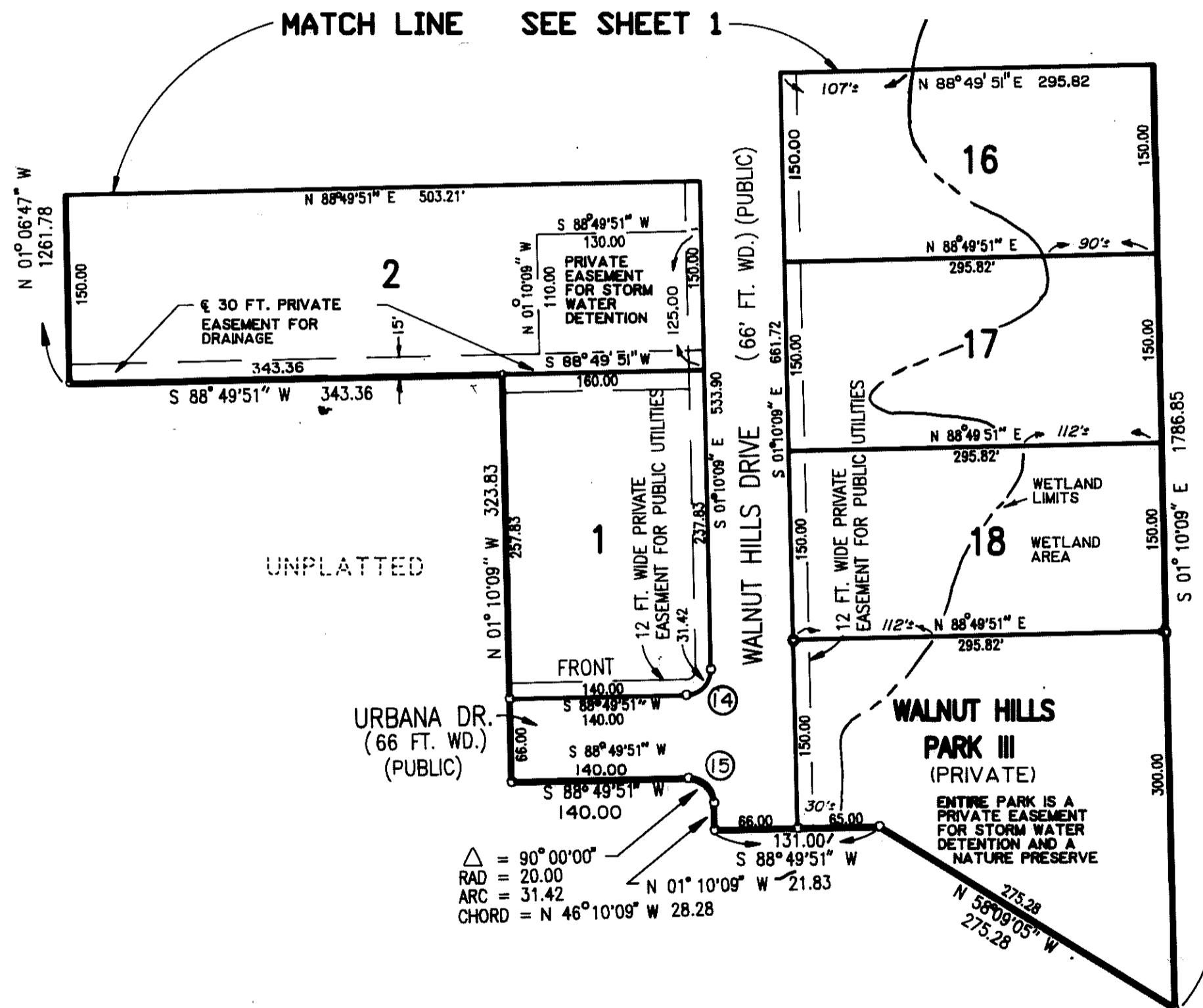


This plat is subject to restrictions required by Act 288 of 1967, as amended on certain lots with respect to the requirements of the Michigan Department of Natural Resources and/or the Michigan Department of Public Health, which are recorded in Liber _____, pages _____.



LOCATION MAP
SCALE: 1" = 2000'

UNPLATTED



UNPLATTED

UNPLATTED

CURVE DATA

NO.	RADIUS	DELTA	ARC	CHORD	BEARING
14	20.00	90°00'00"	31.42	28.28	S 43°49'51" W
15	20.00	90°00'00"	31.42	28.28	S 46°10'09" E

LEGEND:

All dimensions are shown in feet.

All curvilinear dimensions are shown along the arc.

The symbol "o" indicates a concrete monument, which is 4" in diameter x 36" long, encasing a 1/2" iron rod.

All lot markers are 1/2 inch iron rods and are 18 inches in length. (not capped)

Bearings were established from the recorded Plat of "Rolling Meadows Subdivision No. 2", Liber 25 of Plats, page 23 & 24, Livingston County Records.

(R) Denotes a radial line

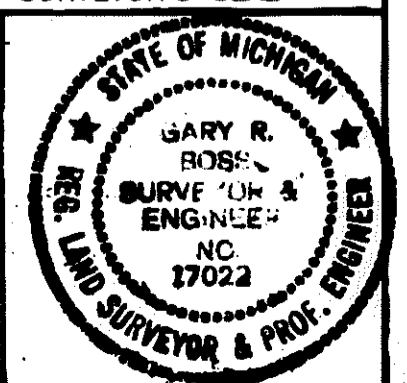
PREPARED AND DRAFTED BY:

Boss Engineering Company
3121 East Grand River
Howell, Michigan 48843

Gary R. Boss
Gary R. Boss

LIBER _____ PAGE _____

SURVEYOR'S SEAL



CERTIFIED TRUE COPY OF
RECORDED PLAT
BY DEPARTMENT OF COMMERCE

Richard E. Lomax
Richard E. Lomax, L.S.
Manager Plat Section

March 22, 1990

Note:

All drain easements and detention areas are under the jurisdiction of the Livingston County Drain Commission.