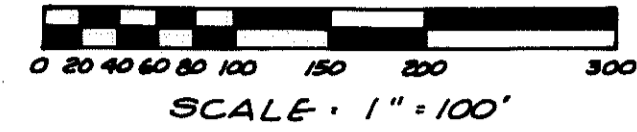
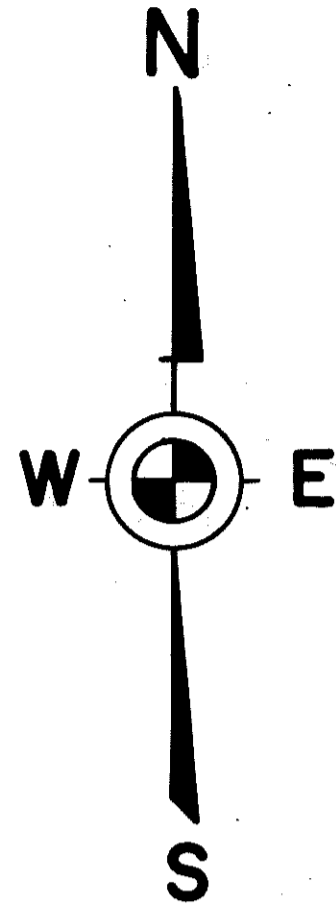


MT. BRIGHTON SUBDIVISION NO. 4

PART OF SW 1/4 SEC. 25, T.2 N., R.5 E.,
GENOA TWP., LIVINGSTON CO., MICHIGAN



PREPARED AND DRAFTED BY:
HERBERT L. MUNZEL
REG. PROF. ENGINEER # 3244
222 W. GRAND RIVER
BRIGHTON, MICH 48116

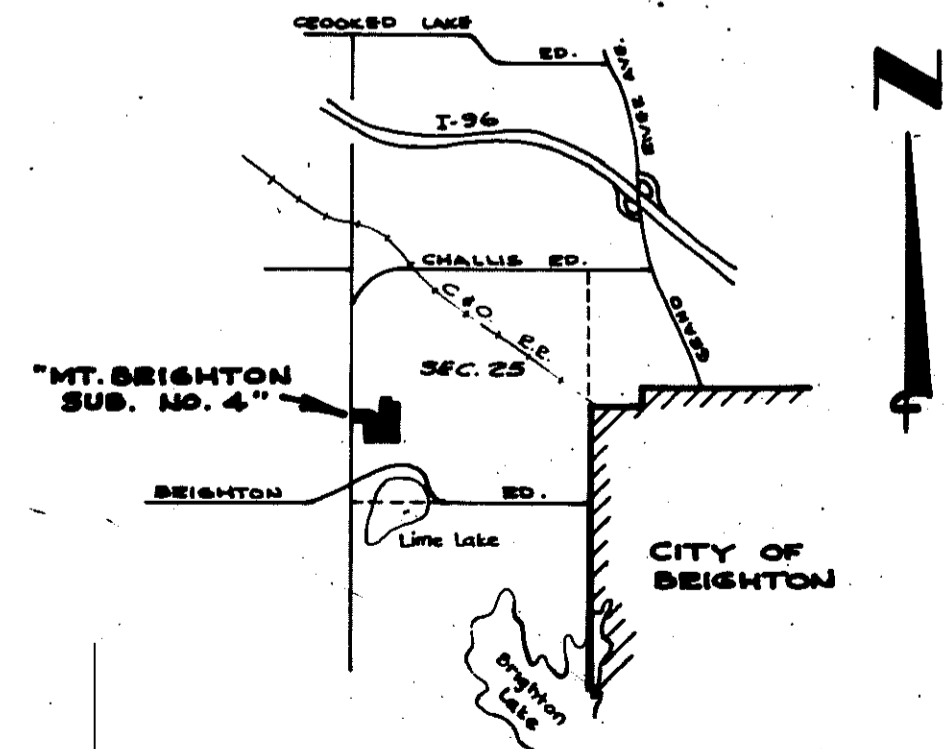


CURVE DATA

NO.	ARC	CENTRAL ANGLE	RADIUS	CHORD BEARING	CHORD
1	47.60	90° 05' 48"	30.27	N. 44° 12' 12" E.	42.85
2	47.65	89° 54' 12"	30.37	N. 45° 47' 48" W.	42.91
3	424.74	121° 41' 12"	200.0	N. 59° 59' 54" E.	349.32
4	544.34	121° 41' 12"	244.0	N. 59° 59' 54" E.	444.59
5	194.77	32° 00'	348.74	N. 75° 09' 30" W.	192.25
6	231.63	32° 00'	414.74	N. 75° 09' 30" W.	228.44
7	47.12	90° 00'	30.0	N. 44° 09' 30" W.	42.43

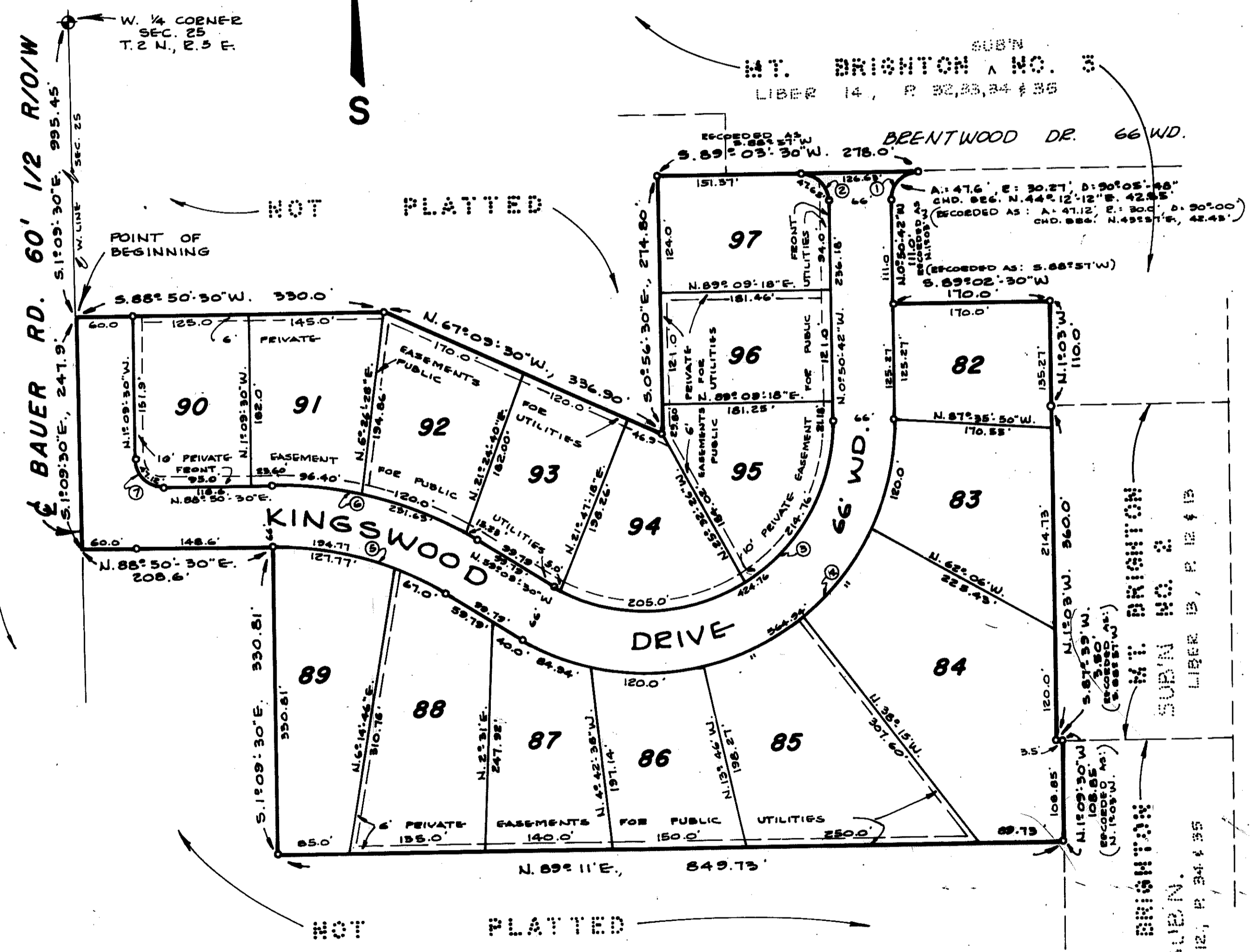
PLAT LEGEND

ALL DIMENSIONS ARE SHOWN IN FEET.
ALL CURVILINEAR DIMENSIONS ARE SHOWN ALONG THE ARC.
ALL BEARINGS ARE RELATED TO THE BEARINGS FOR THE W. LINE OF "MT. BRIGHTON SUB NO. 2", L. 13, P. 12 & 13, LIVINGSTON CO. RECORDS.
THE SYMBOL "C" INDICATES A CONCRETE MONUMENT.
ALL LOT MARKERS ARE 1/2" IRON PIPES AND ARE 18" LONG.



LOCATION SKETCH

This plat is subject to restrictions as required by Act 288 of 1967, as amended on certain lots with respect to the requirements of the Michigan Department of Natural Resources and/or the Michigan Department of Public Health, which are recorded in Liber 633, Page 607-605 of records of this county.



L. P.

NOT PLATTED

NOT PLATTED

NOT PLATTED

MT. BRIGHTON SUBN. LIBER 12, P. 34 & 35

MT. BRIGHTON DE. 66' WD.

