

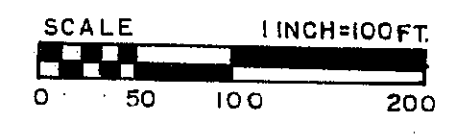
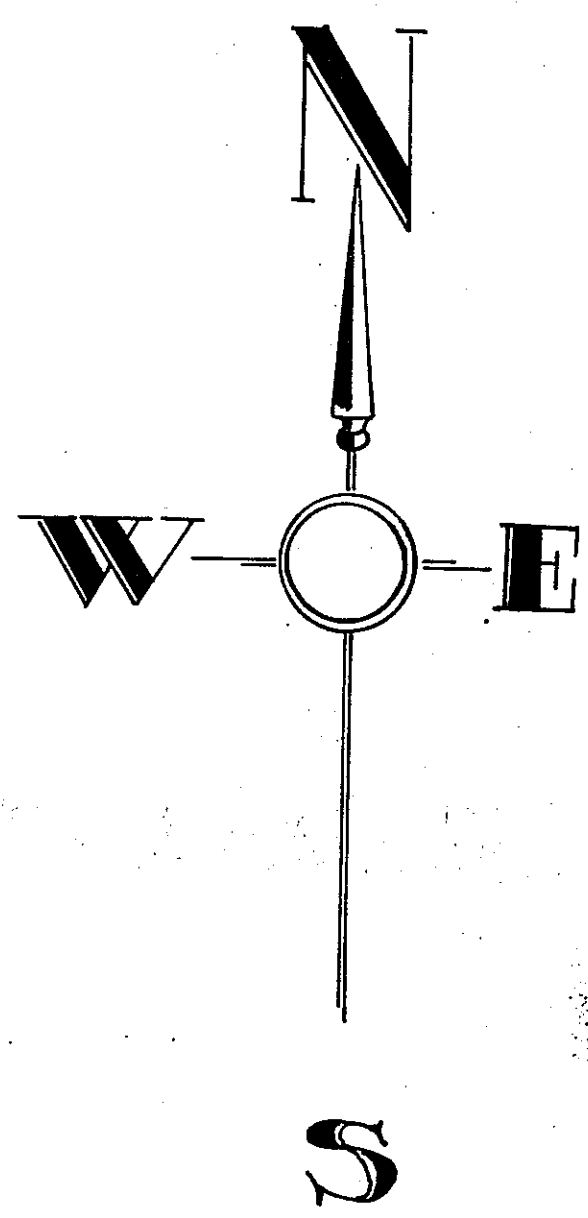
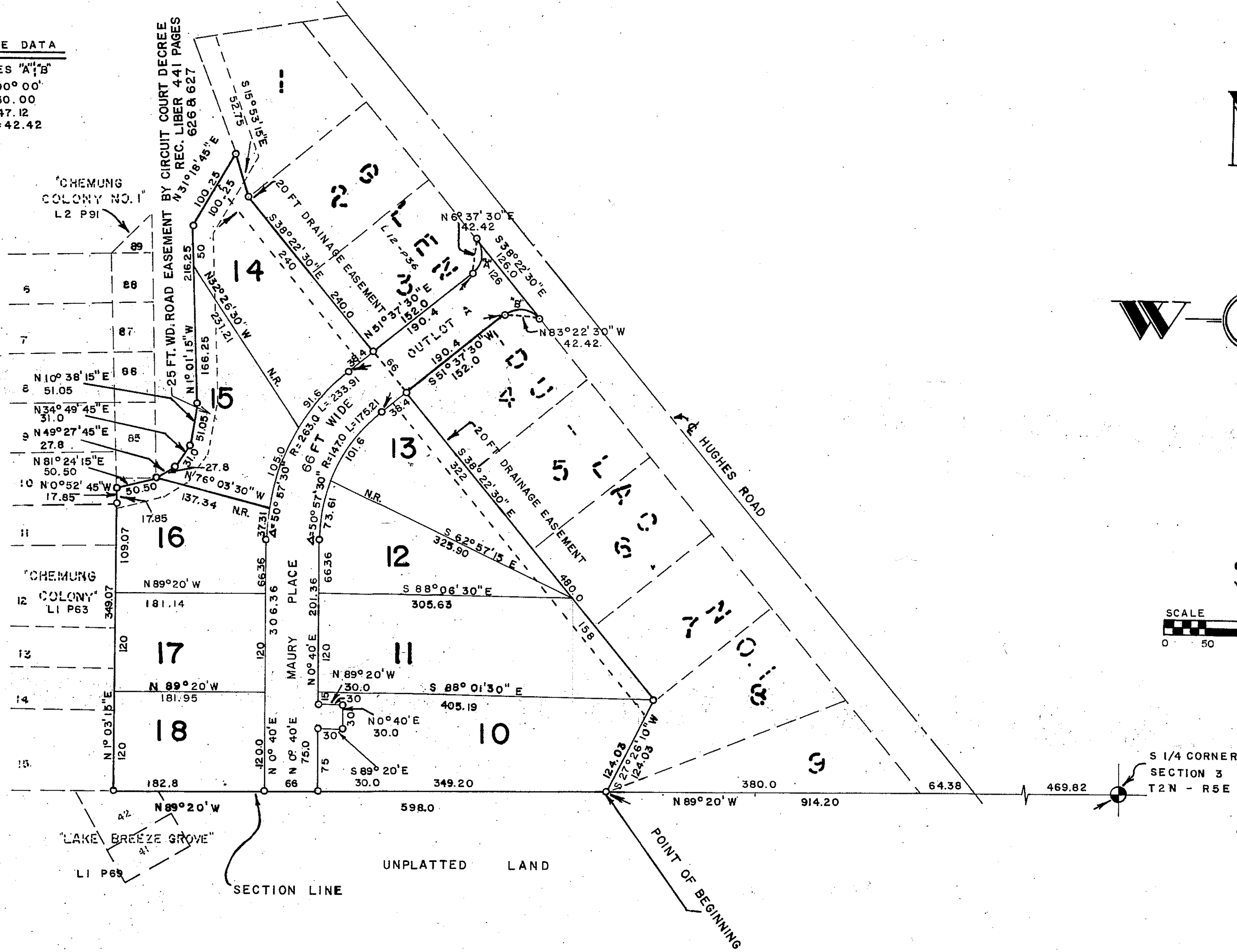
# "GLEN-DU-LAC NO. 2"

A SUBDIVISION OF PART OF S.W. 1/4  
SECTION 3 T2N- R5E, GENOA TOWNSHIP  
LIVINGSTON COUNTY  
MICHIGAN

UNPLATTED LAND

**CURVE DATA**

CURVES "A" & "B"  
Δ = 90° 00'  
R = 30.00'  
L = 47.12'  
L.C. = 42.42'



S 1/4 CORNER  
SECTION 3  
T2N - R5E