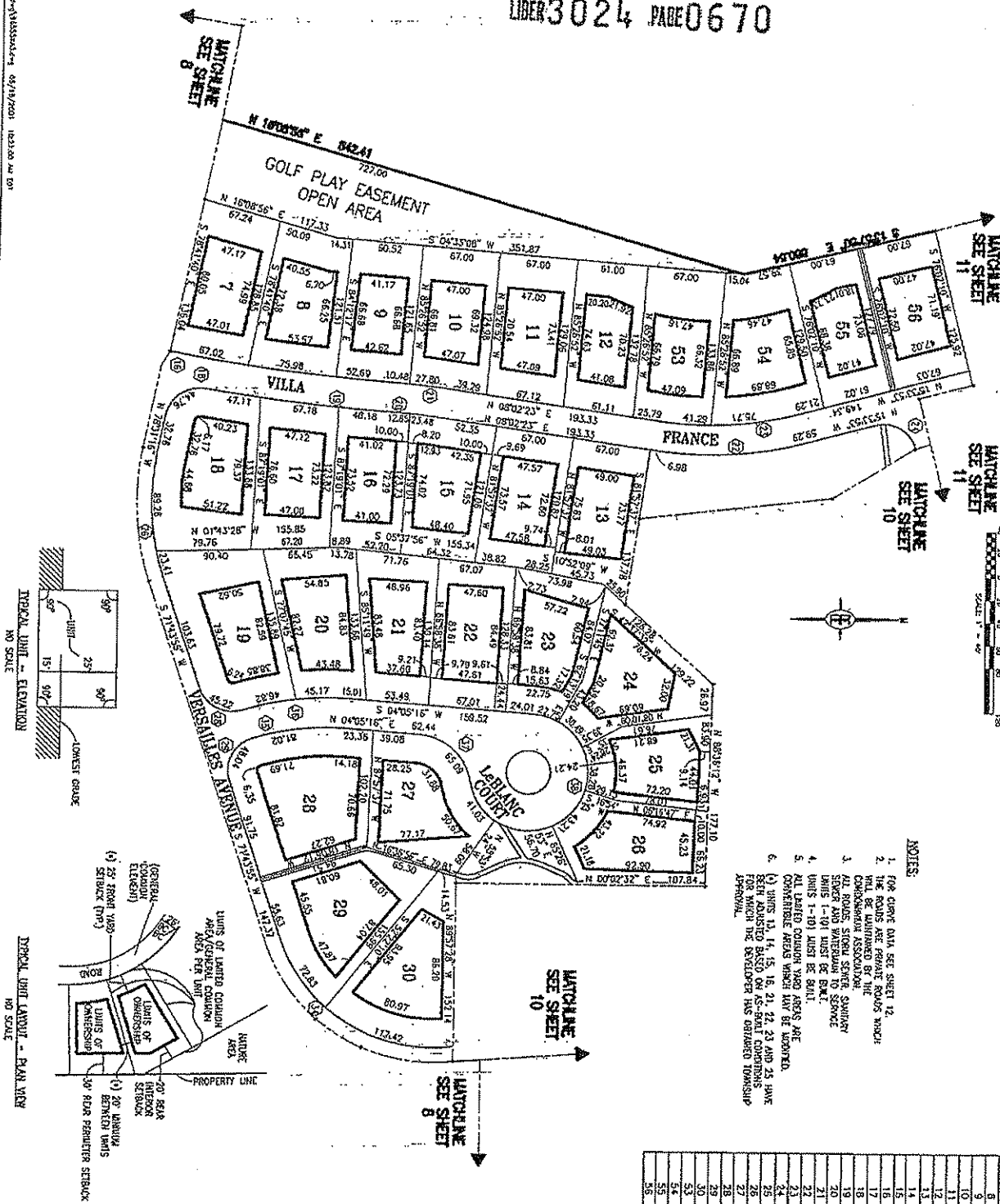




# UNIT AREAS AND PERIMETERS



## NOTES

1. FOR CURVE DATA SEE SHEET 12.
2. THE ROADS ARE PRIVATE ROADS WHICH WILL BE MAINTAINED BY THE COVINGTON ASSOCIATION.
3. ALL ROADS, STREET LIGHTS, SWIMMING POOL, AND OTHER AMENITIES ARE TO BE PROVIDED BY THE COVINGTON ASSOCIATION.
4. ALL UNITS 1-101 MUST BE BUILT.
5. ALL UNITS 102-101 MUST BE BUILT.
6. (a) UNITS 11, 14, 15, 16, 21, 22, 23 AND 24 HAVE BEEN ADJUSTED BASED ON A 15' TOLERANCE FOR WHICH THE DEVELOPER HAS OBTAINED TOWNSHIP APPROVAL.

Unit No.	Area Sq. Ft.
2	3349
3	3358
4	2296
5	3193
6	3383
7	3383
8	3035
9	3085
10	3177
11	3781
12	3785
13	3515
14	3515
15	3542
16	3542
17	3547
18	4045
19	3592
20	4001
21	3913
22	4256
23	4256
24	3996
25	4412
26	3798
27	6085
28	5177
29	4658
30	3118
31	3635
32	2847
33	3377

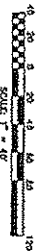
LEGEND  
 UNIT NO.  
 UNIT LINE  
 EASEMENT LINE



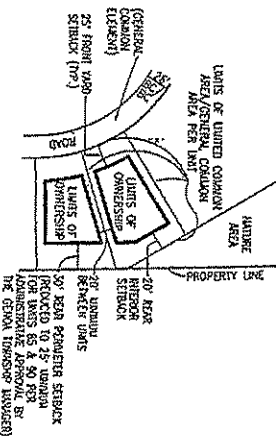
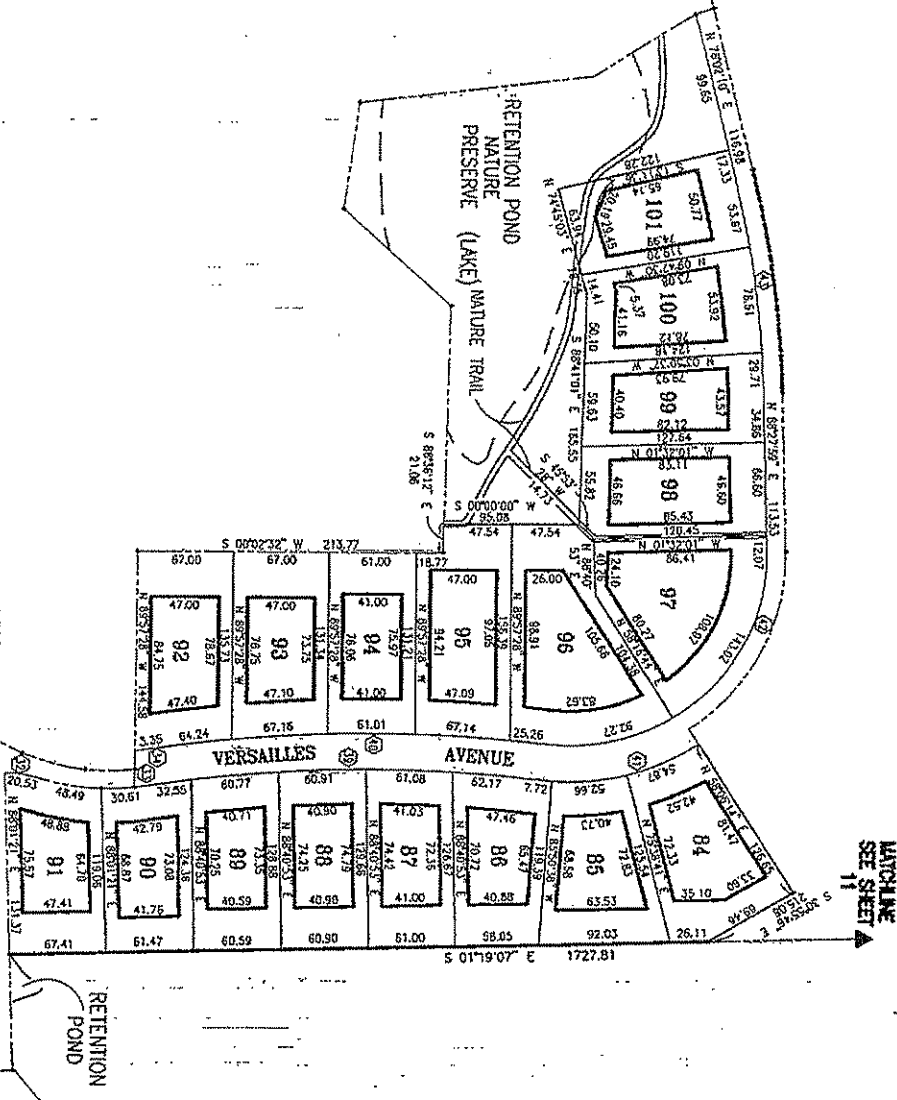
PROPOSED AS OF MAY 15, 2001

CLIENT <b>DELICOR HOMES</b>	<b>BOSS ENGINEERING</b> ENGINEERS & SURVEYORS 301 E. GRAND RIVER HOWELL, MICHIGAN 48840 HOWELL (517) 545-4810 BRIGHTON (616) 225-4773 FAX (517) 545-4670
PROJECT <b>VILLAS OF OAK POINTE</b>	
TITLE <b>UNIT AREAS &amp; PERIMETERS</b>	

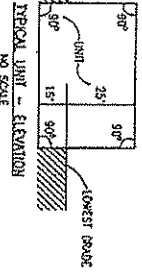
# UNIT AREAS & PERIMETERS



UNIT NO.	Area Sq. Ft.
91	3,570
92	3,600
93	3,008
94	3,015
95	3,054
96	2,920
97	2,975
98	3,273
99	3,842
100	3,528
101	3,111
102	4,406
103	5,573
104	5,484
105	3,927
106	3,681
107	3,761
108	3,595



TYPICAL UNIT LAYOUT - PLAN VIEW  
NO SCALE



TYPICAL UNIT - ELEVATION  
NO SCALE

- NOTES:
1. FOR CURVE DATA SEE SHEET 12.
  2. THE ROADS ARE PRIVATE ROADS WHICH WILL BE MAINTAINED BY THE HOMEOWNERS ASSOCIATION.
  3. ALL ROADS, STORM SEWER, SANITARY SEWER AND WATERMAIN TO SERVICE UNITS 1-101 MUST BE BUILT.
  4. UNITS 1-101 MUST BE BUILT.

LEGEND  
UNIT NO.  
UNIT LINE  
EXISTING LINE



PROPOSED AS OF MAY 15, 2001

CLIENT: DELCOR HOMES  
PROJECT: VILLAS OF OAK POINTE  
TITLE: UNIT AREAS & PERIMETERS

**BOSS ENGINEERING**  
ENGINEERS & SURVEYORS  
3123 E. GRAND RIVER HOWELL, MICHIGAN 48843  
HOWELL (517) 545-4830 BRIGHTON (517) 229-4773  
FAX (517) 545-7670

