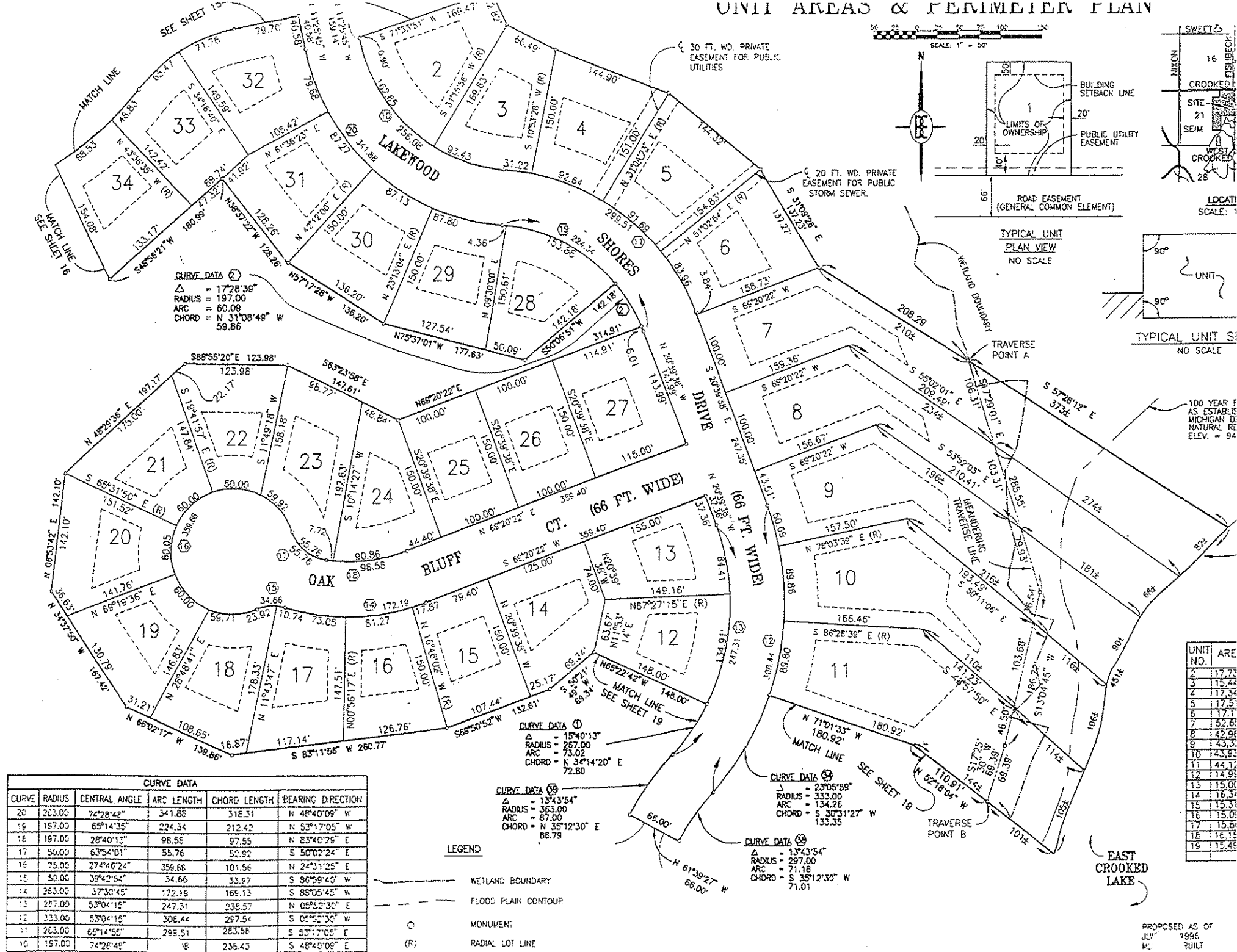
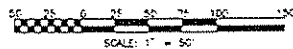


UNIT AREA & FEMMELEN FLAIN



UNIT NO.	AREA
2	17.73
3	15.44
4	17.36
5	17.5
6	17.1
7	52.6
8	42.96
9	43.3
10	43.93
11	44.12
12	14.9
13	15.0
14	16.3
15	15.3
16	15.0
17	15.8
18	16.1
19	15.4

# UNIT AREAS & PERIMETER PLAN

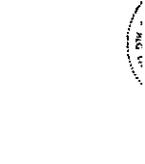
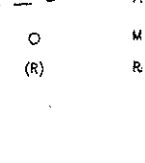
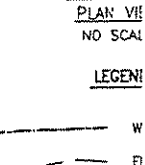
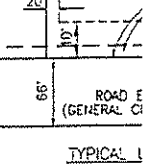
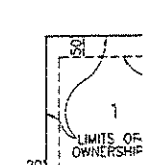
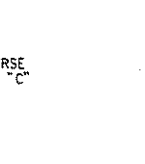
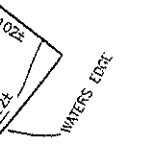
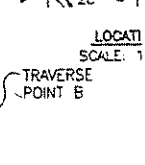
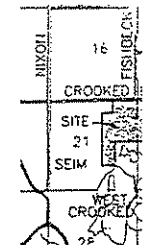
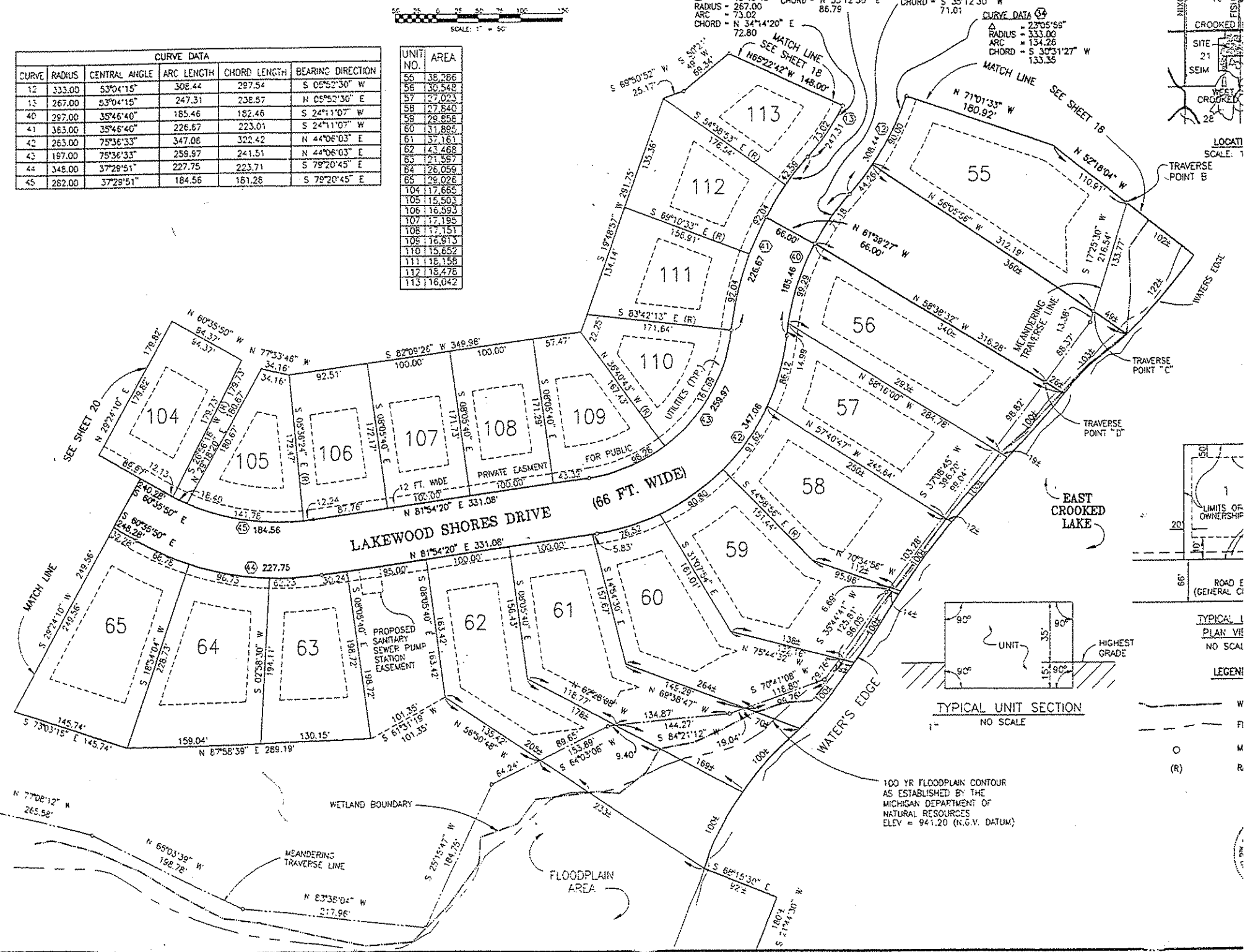


CURVE DATA ①  
 Δ = 15°43'34"  
 RADIUS = 363.00  
 ARC = 87.00  
 CHORD = N 35°12'30" E 86.78  
 Δ = 15°43'34"  
 RADIUS = 363.00  
 ARC = 87.00  
 CHORD = N 35°12'30" E 86.78

CURVE DATA ②  
 Δ = 13°43'54"  
 RADIUS = 297.00  
 ARC = 71.16  
 CHORD = N 35°12'30" W 71.01  
 Δ = 23°05'58"  
 RADIUS = 333.00  
 ARC = 134.26  
 CHORD = S 30°31'27" W 133.35

CURVE DATA					
CURVE	RADIUS	CENTRAL ANGLE	ARC LENGTH	CHORD LENGTH	BEARING DIRECTION
12	333.00	53°04'15"	308.44	297.54	S 05°52'30" W
13	267.00	53°04'15"	247.31	238.57	N 05°52'30" E
40	297.00	35°46'40"	185.46	182.46	S 24°11'07" W
41	363.00	35°46'40"	226.67	223.01	S 24°11'07" W
42	263.00	75°36'33"	347.06	322.42	N 44°06'03" E
43	197.00	75°36'33"	259.57	241.51	N 44°06'03" E
44	348.00	37°29'51"	227.75	223.71	S 79°20'45" E
45	282.00	37°29'51"	184.56	181.28	S 79°20'45" E

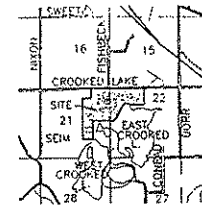
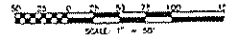
UNIT NO.	AREA
56	38.265
58	30.548
57	27.023
58	27.540
59	28.858
60	31.885
61	37.161
62	43.468
63	21.557
64	26.059
65	28.026
104	17.665
105	15.503
106	16.593
107	17.195
108	17.151
109	16.913
110	15.652
111	18.158
112	18.478
113	16.042



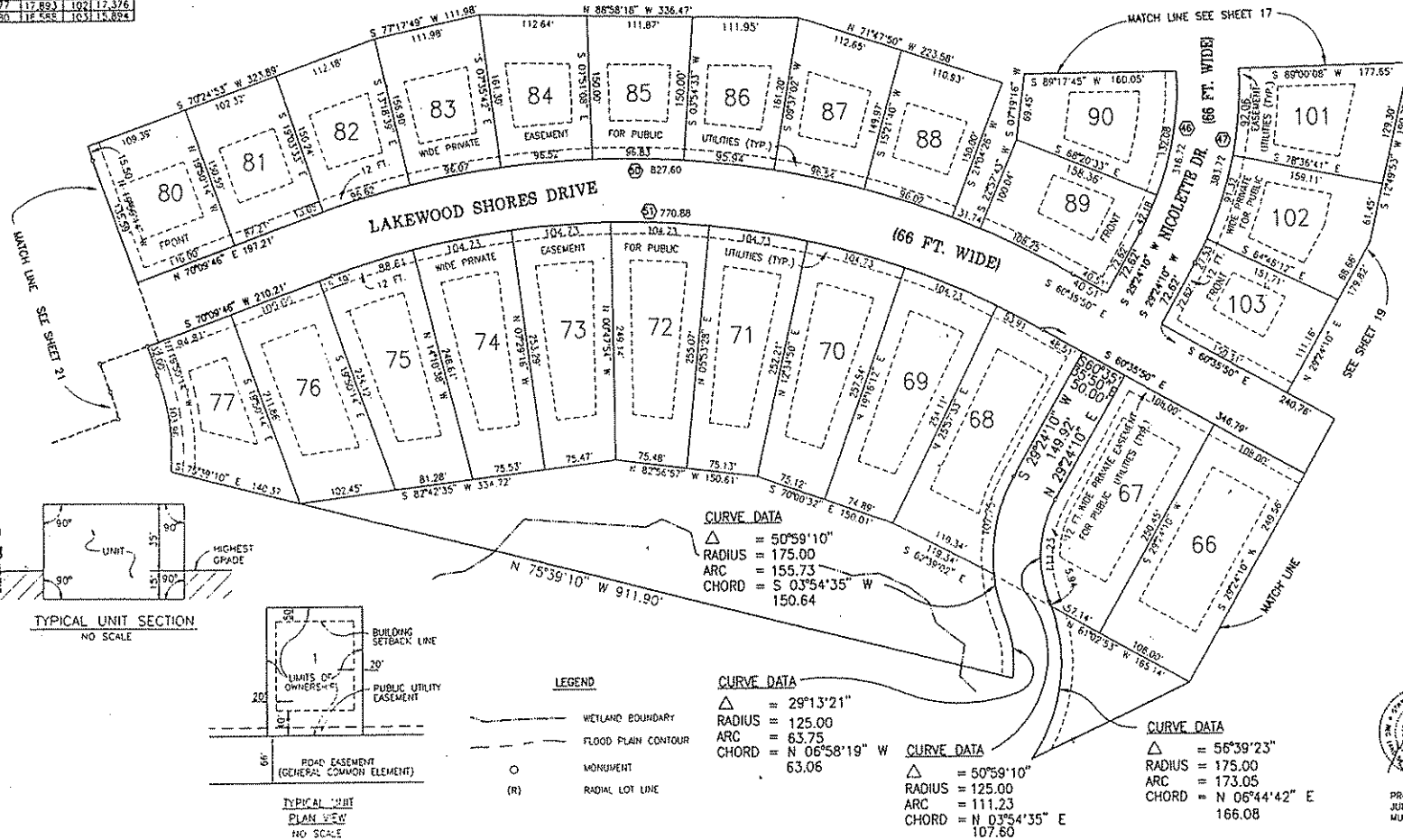
# UNIT AREAS & PERIMETER PLAN

UNIT NO.	AREA	UNIT NO.	AREA
66	26.995	81	15.235
67	22.527	82	15.915
68	24.092	83	16.443
69	23.026	84	16.131
70	22.955	85	15.552
71	22.862	86	16.025
72	22.748	87	15.122
73	22.680	88	15.421
74	22.661	89	16.334
75	22.286	90	16.261
76	22.239	101	16.232
77	17.893	102	12.576
80	16.585	103	15.894

CURVE DATA				
CURVE	RADIUS	CENTRAL ANGLE	CHORD LENGTH	BEARING DIRECTION
46	312.00	58°09'45"	316.72	303.29
47	328.00	58°09'45"	383.72	367.45
50	963.00	49°14'24"	827.60	602.37
51	897.00	49°14'24"	770.88	747.38



LOCATION MAP  
SCALE: 1" = 2000'



CURVE DATA	
△	50°59'10"
RADIUS	= 175.00
ARC	= 155.73
CHORD	= S 03°54'35" W 150.64

CURVE DATA	
△	29°13'21"
RADIUS	= 125.00
ARC	= 63.75
CHORD	= N 06°58'19" W 63.06

CURVE DATA	
△	50°59'10"
RADIUS	= 125.00
ARC	= 111.23
CHORD	= N 03°54'35" E 107.60

CURVE DATA	
△	56°39'23"
RADIUS	= 175.00
ARC	= 173.05
CHORD	= N 06°44'42" E 166.08

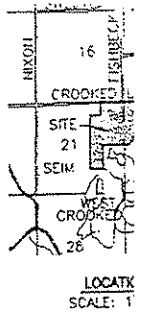
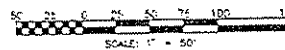


PROPOSED AS OF  
JUNE 1, 1986  
MUST BE BUILT

**BOSS ENGINEERING  
ENGINEERS & SURVEYORS**  
10000 LINDEN AVE. S. #100  
BOSTON, MN 55120  
PHONE: (612) 44-4454  
FAX: (612) 446-9400

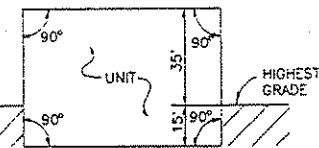
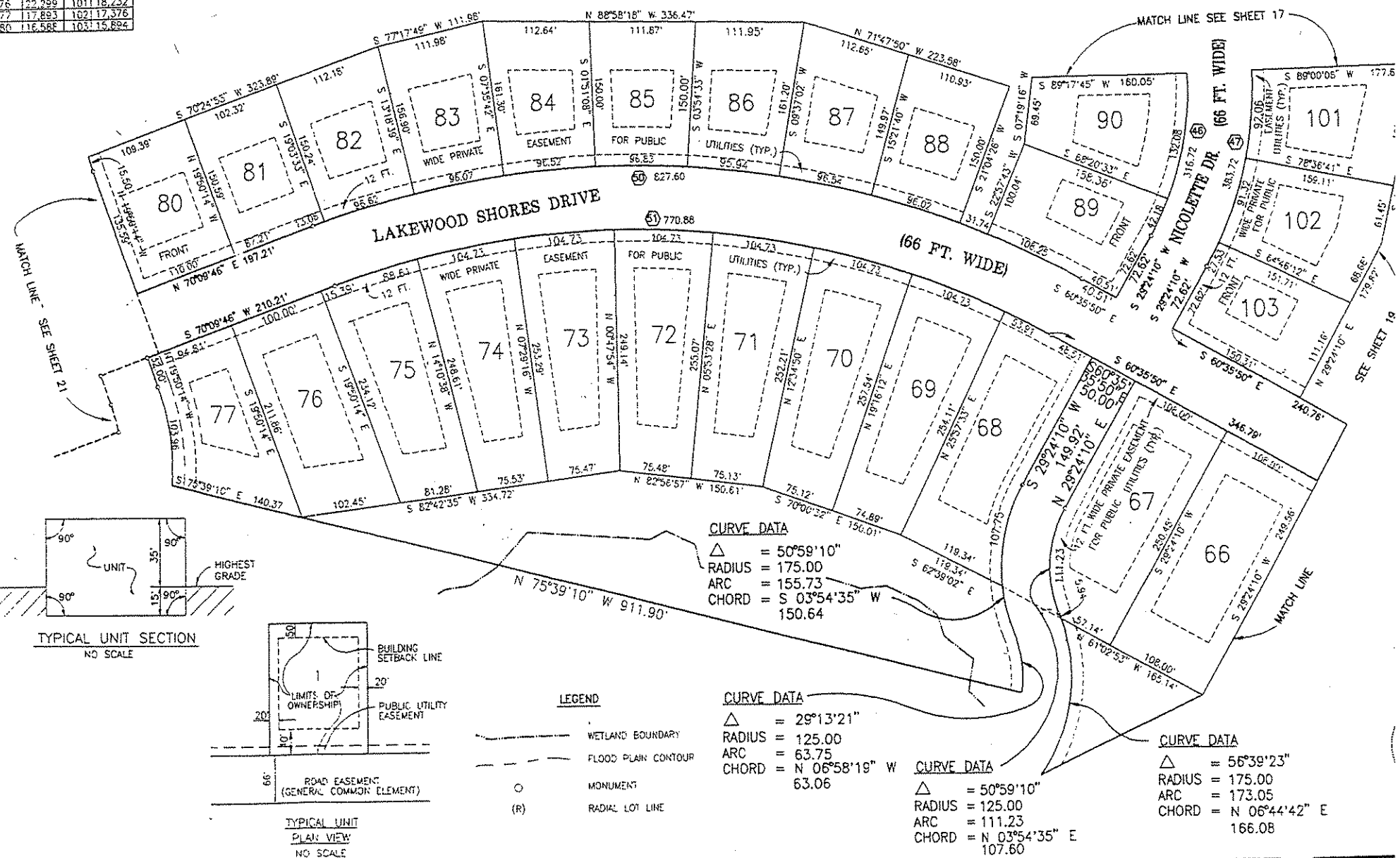
CLIENT	NORTH SHORE LAND DEVELOPMENT
PROJECT	NORTH SHORE VILLAGE
TITLE	UNIT AREAS & PERIMETER PLAN
DATE	6/1/86
BY	BOSS
CHECKED BY	DELINCEY
SCALE	AS SHOWN
JOB NO.	89634
DATE	05-15-86
20	

# UNIT AREAS & PERIMETER PLAN

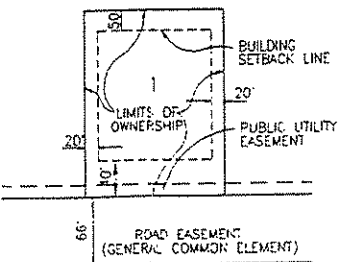


UNIT NO.	AREA	UNIT NO.	AREA
66	28.998	81	15.232
67	25.527	82	15.915
68	25.094	83	16.443
69	23.026	84	16.131
70	22.955	85	15.552
71	22.862	86	16.029
72	22.745	87	16.127
73	22.650	88	15.421
74	22.661	89	16.334
75	22.286	90	16.261
76	22.299	101	18.232
77	17.893	102	17.376
80	116.568	103	15.894

CURVE DATA					
CURVE	RADIUS	CENTRAL ANGLE	ARC LENGTH	CHORD LENGTH	BEARING DIRECTION
46	312.00	58°09'45"	316.72	303.29	N 00°19'16" E
47	378.00	58°09'45"	383.72	367.45	N 00°16'18" E
50	963.00	49°14'24"	827.60	802.37	N 85°13'02" W
51	887.00	49°14'24"	770.88	747.38	N 85°13'02" W



TYPICAL UNIT SECTION  
NO SCALE



TYPICAL UNIT  
PLAN VIEW  
NO SCALE

## LEGEND

- WETLAND BOUNDARY
- FLOOD PLAIN CONTOUR
- MONUMENT
- (R) RADIAL LOT LINE

## CURVE DATA

$\Delta$  = 50°59'10"  
 RADIUS = 175.00  
 ARC = 155.73  
 CHORD = S 03°54'35" W 150.64

## CURVE DATA

$\Delta$  = 29°13'21"  
 RADIUS = 125.00  
 ARC = 63.75  
 CHORD = N 06°58'19" W 63.06

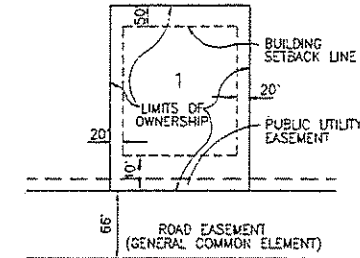
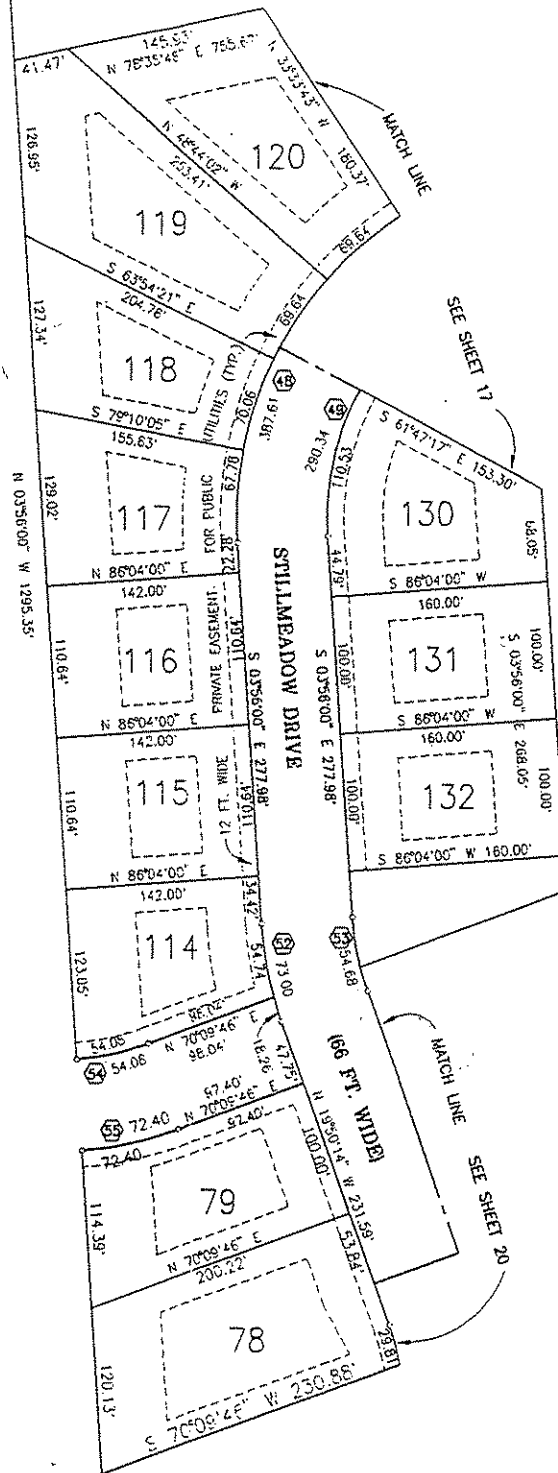
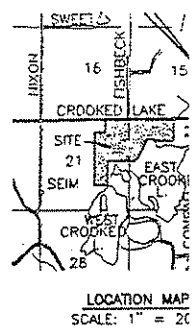
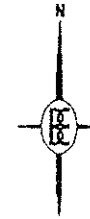
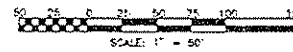
## CURVE DATA

$\Delta$  = 50°59'10"  
 RADIUS = 125.00  
 ARC = 111.23  
 CHORD = N 03°54'35" E 107.60

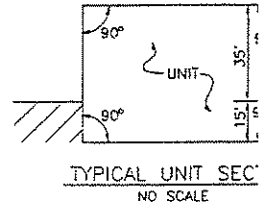
## CURVE DATA

$\Delta$  = 56°39'23"  
 RADIUS = 175.00  
 ARC = 173.05  
 CHORD = N 06°44'42" E 166.08

# UNIT AREAS & PERIMETER PLAN



TYPICAL UNIT  
PLAN VIEW  
NO SCALE



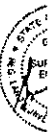
TYPICAL UNIT SEC  
NO SCALE

UNIT NO.	AREA
78	25.011
79	16.848
114	15.673
115	15.711
116	15.711
117	15.866
118	16.575
119	25.063
120	26.835
130	17.624
131	16.000
132	16.000

## LEGEND

- WETLAND
- - - FLOOD PI
- O MONUMEN
- (R) RADIAL LI

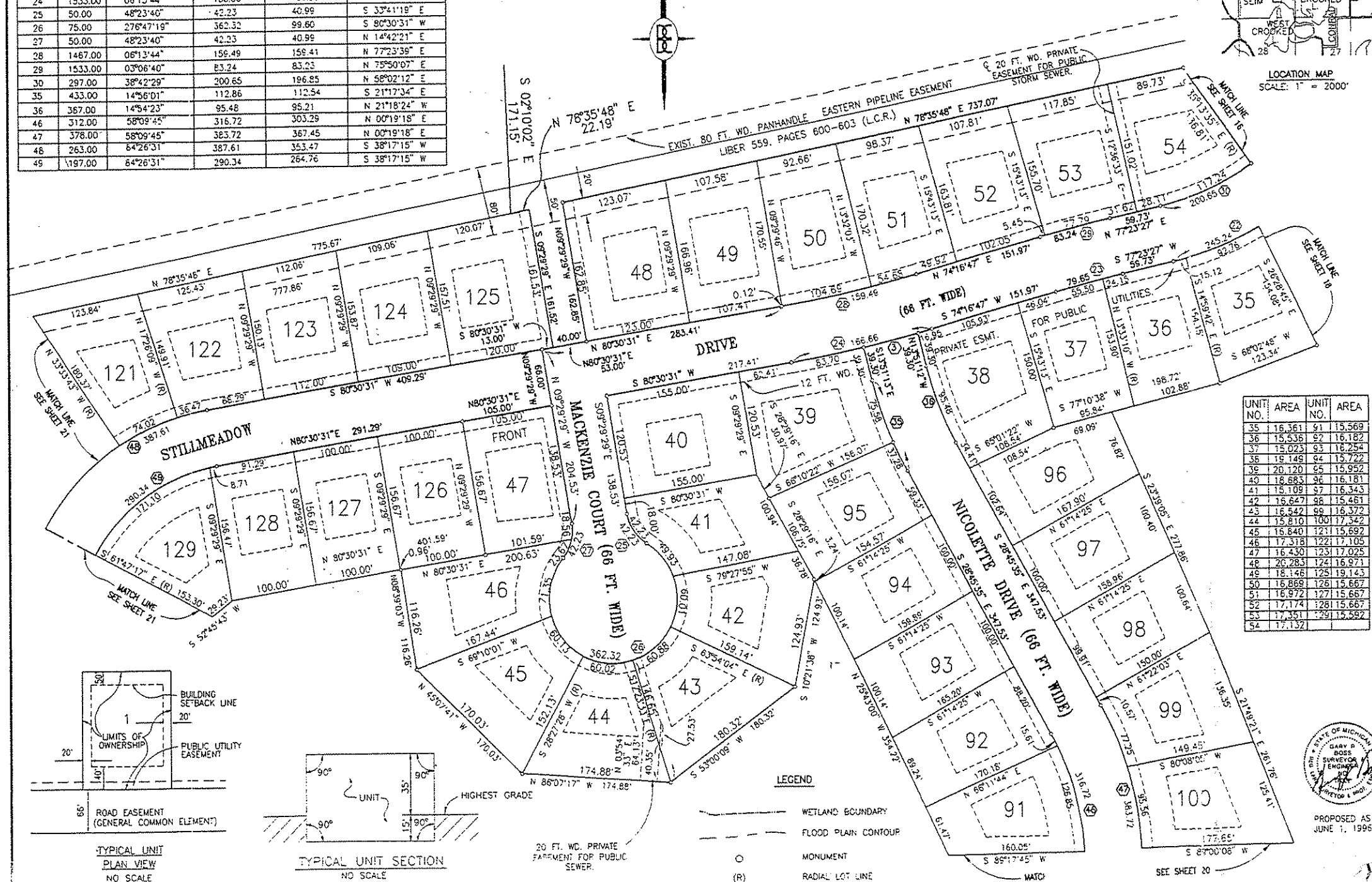
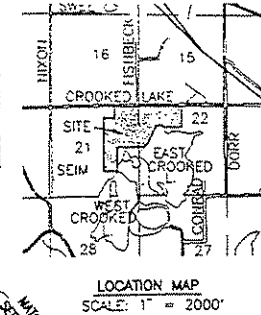
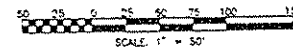
CURVE DATA					
CURVE	RADIUS	CENTRAL ANGLE	ARC LENGTH	CHORD LENGTH	BEARING DIRECTION
46	263.00	84°26'31"	367.61	353.47	S 38°17'15" W
49	197.00	84°26'31"	290.34	264.76	S 38°17'15" W
52	263.00	15°54'13"	73.00	72.77	S 11°53'7" E
53	197.00	15°54'13"	54.68	54.51	S 11°53'7" E
54	194.00	15°57'38"	54.04	53.67	N 78°08'36" E
55	260.00	15°57'38"	72.43	72.19	N 78°08'36" E



PROP  
JUNE  
MUST

CURVE DATA					
CURVE	RADIUS	CENTRAL ANGLE	ARC LENGTH	CHORD LENGTH	BEARING DIRECTION
1	1533.00	02°28'01"	66.01	66.00	S 76°08'46" W
22	363.00	38°42'29"	245.24	240.60	S 58°02'12" W
23	1467.00	03°06'40"	79.66	79.65	S 75°50'07" W
24	1533.00	08°13'44"	166.66	166.58	S 77°23'39" W
25	50.00	48°23'40"	42.23	40.99	S 33°41'18" E
26	75.00	27°47'19"	362.32	99.60	S 80°30'31" W
27	50.00	48°23'40"	42.23	40.99	N 14°42'21" E
28	1467.00	06°13'44"	156.49	156.41	N 77°23'39" E
29	1533.00	03°06'40"	83.24	83.23	N 75°50'07" E
30	297.00	38°42'29"	200.65	196.85	N 58°02'12" E
35	433.00	14°56'01"	112.86	112.54	S 21°17'34" E
36	367.00	14°54'23"	95.48	95.21	N 21°18'24" W
46	312.00	58°09'45"	316.72	303.29	N 00°19'18" E
47	378.00	58°09'45"	383.72	367.45	N 00°19'18" E
48	263.00	84°26'31"	387.61	353.47	S 38°17'15" W
49	197.00	84°26'31"	290.34	264.76	S 38°17'15" W

# UNIT AREAS & PERIMETER PLAN



UNIT NO.	AREA	UNIT NO.	AREA
35	16,361	91	15,569
36	15,536	92	16,182
37	15,023	93	16,254
38	19,149	94	15,722
39	20,120	95	15,952
40	18,683	96	16,181
41	15,109	97	16,343
42	15,647	98	15,461
43	16,542	99	16,372
44	15,810	100	17,342
45	16,840	101	15,692
46	17,318	102	17,105
47	16,430	103	17,025
48	20,283	104	16,971
49	18,146	105	19,143
50	16,869	106	15,667
51	16,972	107	15,667
52	17,174	108	15,667
53	17,351	109	15,582
54	17,132		

**BOSS ENGINEERING**  
ENGINEERS & SURVEYORS  
3121 E. GRAND RIVER  
HOWELL, MI 48840  
TEL: (517) 646-1870 FAX: (517) 646-1870

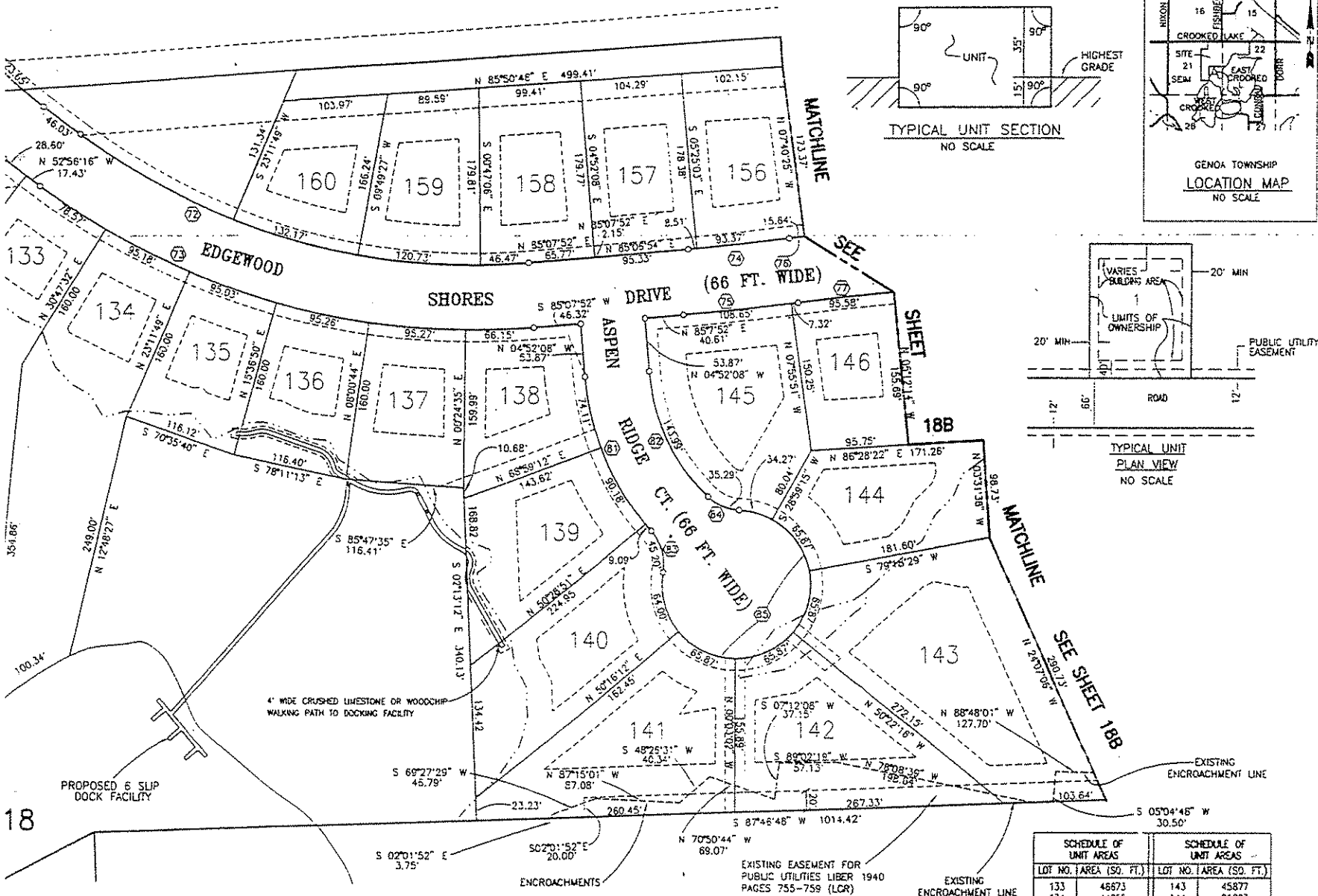
CLIENT: NORTH SHORE LAND DEVELOPMENT  
PROJECT: NORTH SHORE VILLAGE  
TITLE: UNIT AREAS & PERIMETER PLAN



PROPOSED AS OF  
JUNE 1, 1995

CHECKED BY: GARY R. BOSS  
DATE: 06-15-95  
JOB NO. 95634  
DATE: 06-15-95

## UNIT AREAS & PERIMETERS



CURVE DATA											
CURVE	RADIUS	CENTRAL ANGLE	ARC LENGTH	CHORD LENGTH	BEARING DIRECTION	CURVE	RADIUS	CENTRAL ANGLE	ARC LENGTH	CHORD LENGTH	BEARING DIRECTION
70	467.00	15°10'15"	123.65	123.26	S 45°21'09" E	77	1867.00	05°46'17"	188.06	187.98	N 84°44'54" E
71	533.00	15°10'15"	141.13	140.72	N 45°21'09" W	81	283.00	37°46'15"	173.38	170.25	N 23°45'15" W
72	652.00	41°55'51"	477.16	466.58	S 73°54'12" E	82	197.00	41°52'47"	143.99	140.81	S 25°48'31" E
73	718.00	41°55'51"	525.46	513.81	N 73°54'12" W	83	50.00	51°47'55"	45.20	43.68	N 16°44'25" W
74	1967.00	03°18'06"	112.21	112.19	N 83°29'49" E	84	50.00	40°26'41"	35.29	34.57	S 66°56'15" E
75	2033.00	03°18'06"	115.97	115.96	S 83°29'49" W	85	75.00	27°62'10"	361.74	100.03	S 50°58'58" W
76	1933.00	04°46'17"	194.71	194.62	N 84°44'54" E						

SCHEDULE OF UNIT AREAS		SCHEDULE OF UNIT AREAS	
LOT NO.	AREA (SQ. FT.)	LOT NO.	AREA (SQ. FT.)
133	46673	143	45877
134	44055	144	21293
135	16750	145	27350
136	15790	146	15226
137	16791	156	18605
138	18068	157	18830
139	21223	158	19074
140	26121	159	18243
141	31371	160	17271
142	28822		

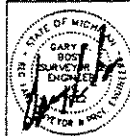
PROPOSED AS OF JULY 15, 2000  
MUST BE BUILT

**DE  
DC** **BOSS ENGINEERING**  
ENGINEERS • SURVEYORS • PLANNERS  
LANDSCAPE ARCHITECTS

# CURRI NORTH SHORE LAND DEVELOPMENT

**NORTH SHORE VILLAGE**

UNIT AREAS &amp; PERIMETERS



DESIGNED BY WC

COPIED BY LC

INDEXED BY

1" = 50'

LOG NO. 98756

04-50-00

1

Page: 43

10

10