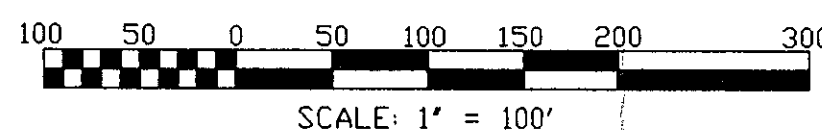
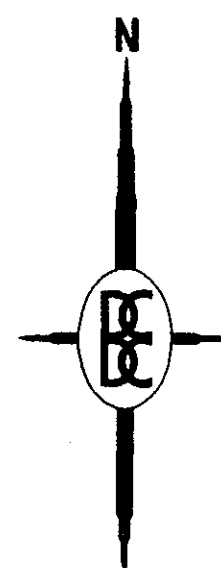
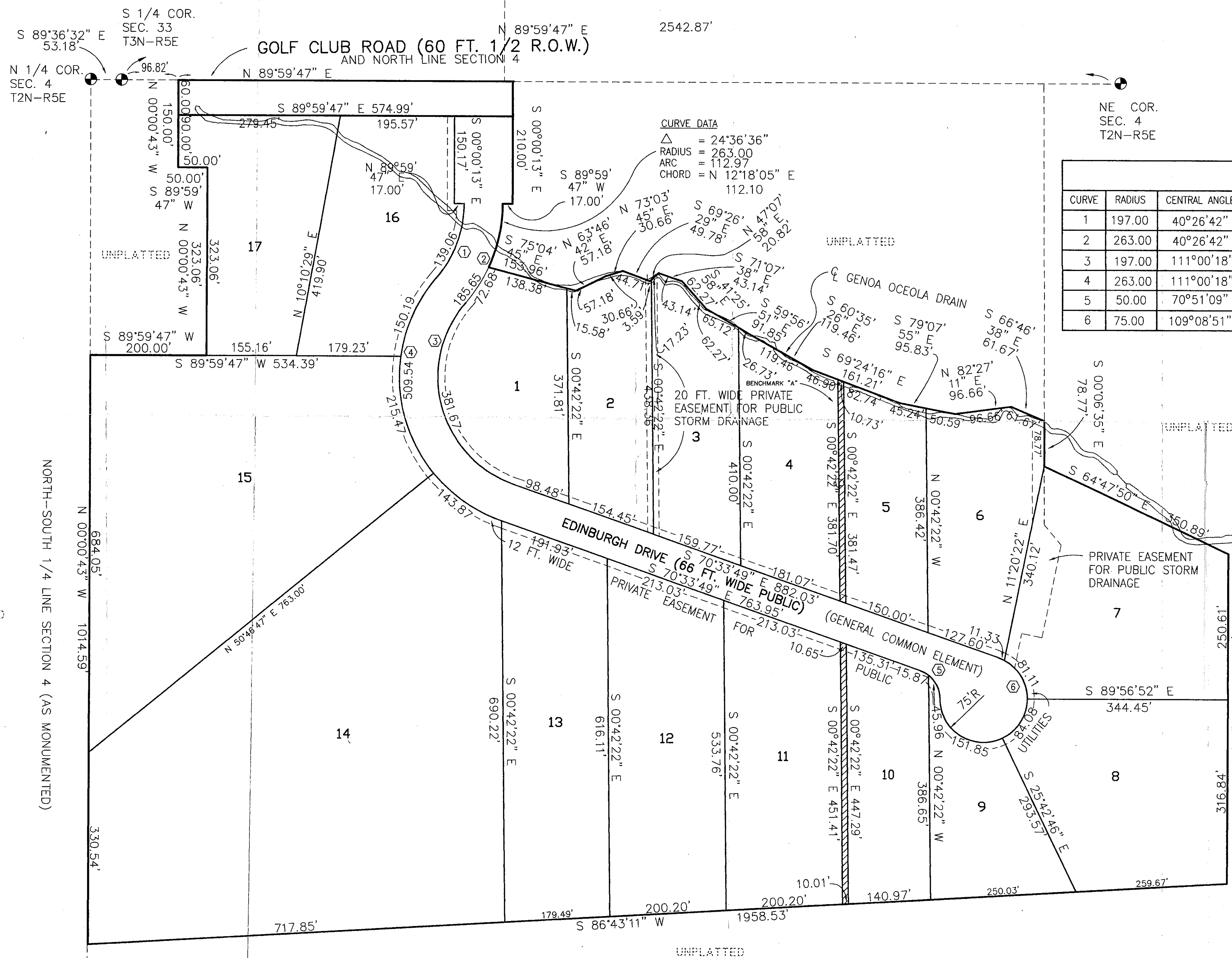


UNIT AREAS & PERIMETER PLAN



| UNIT AREAS | |
|------------|------------|
| NO. | AREA |
| 1 | 1.59 ACRES |
| 2 | 1.37 ACRES |
| 3 | 1.50 ACRES |
| 4 | 1.53 ACRES |
| 5 | 1.23 ACRES |
| 6 | 1.63 ACRES |
| 7 | 2.68 ACRES |
| 8 | 2.47 ACRES |
| 9 | 1.23 ACRES |
| 10 | 1.35 ACRES |
| 11 | 2.26 ACRES |
| 12 | 2.64 ACRES |
| 13 | 2.70 ACRES |
| 14 | 9.54 ACRES |
| 15 | 5.81 ACRES |
| 16 | 2.00 ACRES |
| 17 | 1.93 ACRES |



| CURVE DATA | | | | | |
|------------|--------|---------------|------------|--------------|-------------------|
| CURVE | RADIUS | CENTRAL ANGLE | ARC LENGTH | CHORD LENGTH | BEARING DIRECTION |
| 1 | 197.00 | 40°26'42" | 139.06 | 136.19 | N 20°13'08" E |
| 2 | 263.00 | 40°26'42" | 185.65 | 181.82 | N 20°13'08" E |
| 3 | 197.00 | 111°00'18" | 381.67 | 324.72 | S 15°03'40" E |
| 4 | 263.00 | 111°00'18" | 509.54 | 433.50 | S 15°03'40" E |
| 5 | 50.00 | 70°51'09" | 61.83 | 57.97 | N 35°08'14" W |
| 6 | 75.00 | 109°08'51" | 142.87 | 122.23 | N 54°51'46" E |

CURVE DATA
 Δ = 24°36'36"
 RADIUS = 263.00
 ARC = 112.97
 CHORD = N 12°18'05" E
 112.10

11-04-201

- LEGEND
- MONUMENT
 - 2 UNIT NUMBER
 - LIMITS OF OWNERSHIP
 - ▨ GENERAL COMMON AREA



PROPOSED AS AUGUST 1, 1994
 MUST BE BUILT

BOSS ENGINEERING
ENGINEERS & SURVEYORS
 3121 E. GRAND RIVER
 HOWELL (517) 546-4836
 BRIGHTON (313) 229-4773
 FAX (517) 548-1670

| CLIENT | BOSS INVESTMENTS PARTNERSHIP #1 | DATE |
|---------|---------------------------------|------|
| PROJECT | MUIRFIELD MANOR | |
| TITLE | UNIT AREAS & PERIMETER PLAN | |

| DESIGNED BY: | KCS |
|--------------|----------|
| DRAWN BY: | TRW |
| CHECKED BY: | |
| SCALE | 1"=100' |
| JOB NO. | 93180 |
| DWG. NO. | 93180XB4 |
| DATE | 8-02-94 |
| SHEET NO. | 4 |