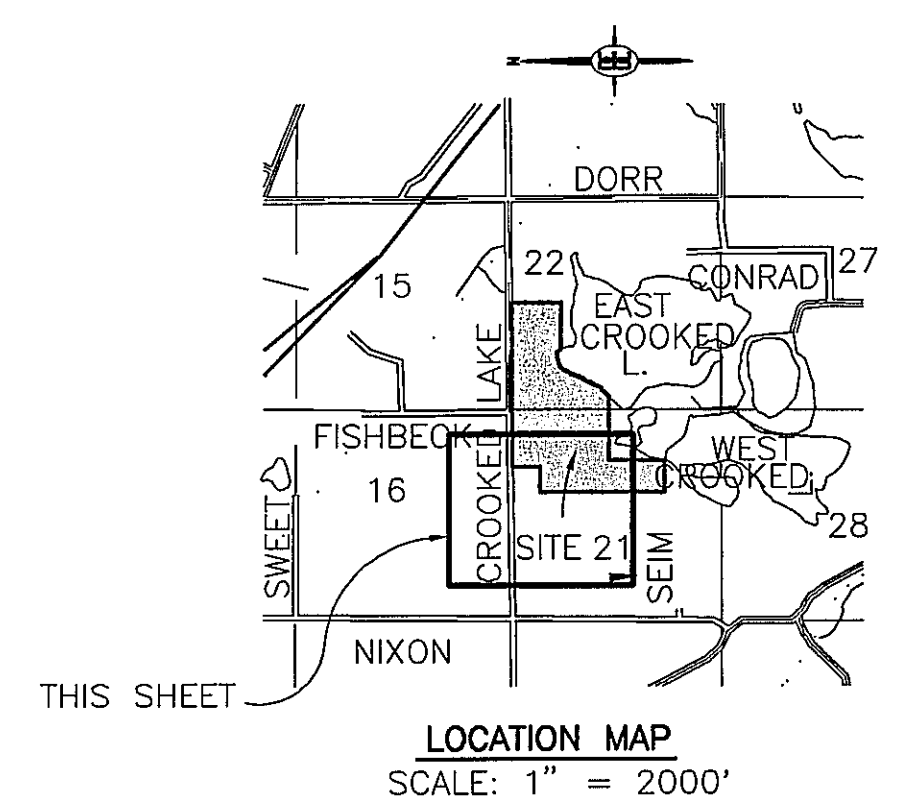
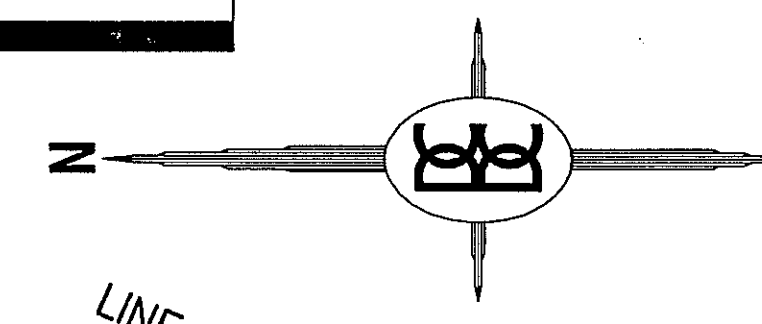


H: 95034X19 Tue Feb 27 14: 03: 35 1996

SCALE: 1" = 40'



UNIT NO.	AREA	UNIT NO.	AREA
6	3,519	20	6,399
7	3,783	21	3,843
8	4,940	22	2,582
9	6,154	23	2,578
10	4,942	24	2,597
11	4,806	25	6,178
12	5,653	26	5,509
13	5,201	27	5,432
14	4,466	28	6,479
15	3,680	29	4,391
16	2,994	30	5,143
17	5,047	31	5,085
18	6,173	32	3,694
19	4,664	33	3,581

CURVE DATA					
CURVE	RADIUS	CENTRAL ANGLE	ARC LENGTH	CHORD LENGTH	BEARING DIRECTION
7	170.00	62°28'20"	185.36	176.31	N _{70°10'02"} W
8	130.00	179°54'08"	408.19	260.00	S _{11°27'08"} E
9	170.00	51°51'40"	153.87	148.68	N _{00°30'43"} E
10	80.00	10°04'04"	14.06	14.04	N _{61°50'06"} W
11	70.00	152°46'02"	186.64	136.07	N _{09°30'53"} E
12	64.00	172°36'01"	192.80	127.73	S _{07°48'05"} E
18	140.00	67°19'00"	164.49	155.19	S _{24°10'01"} W
19	180.00	67°19'00"	211.48	199.53	N _{24°10'01"} E

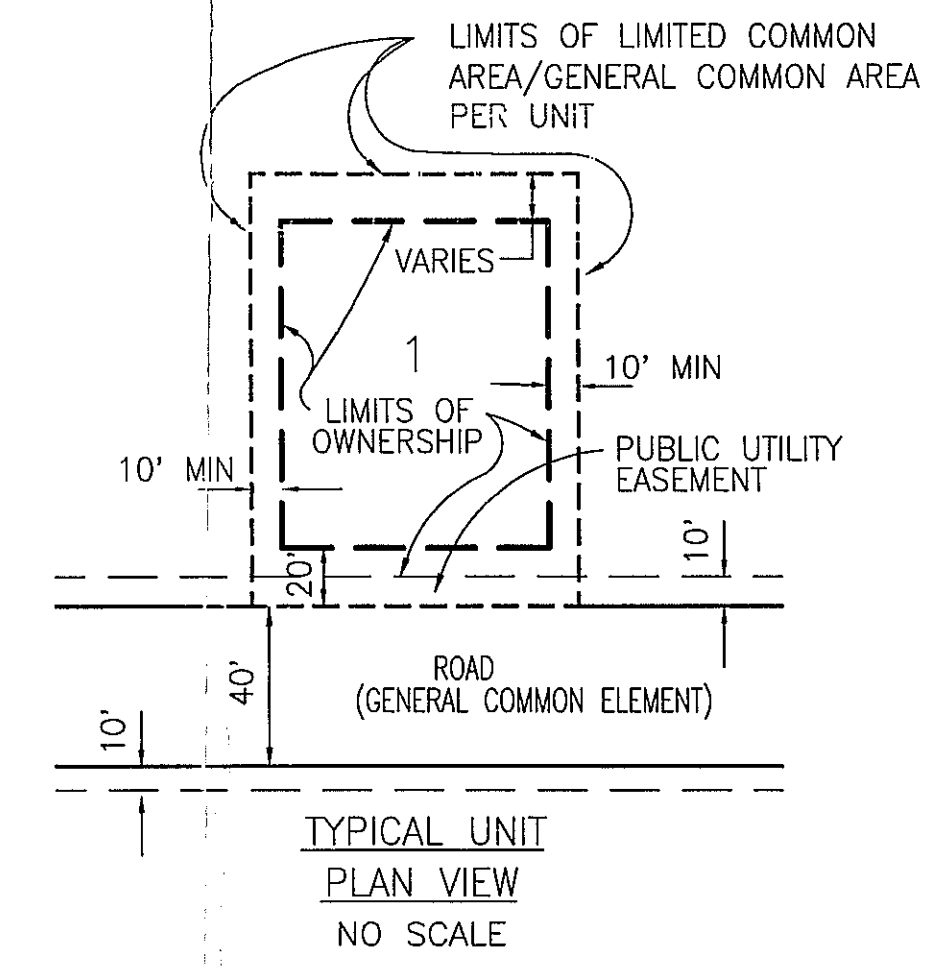
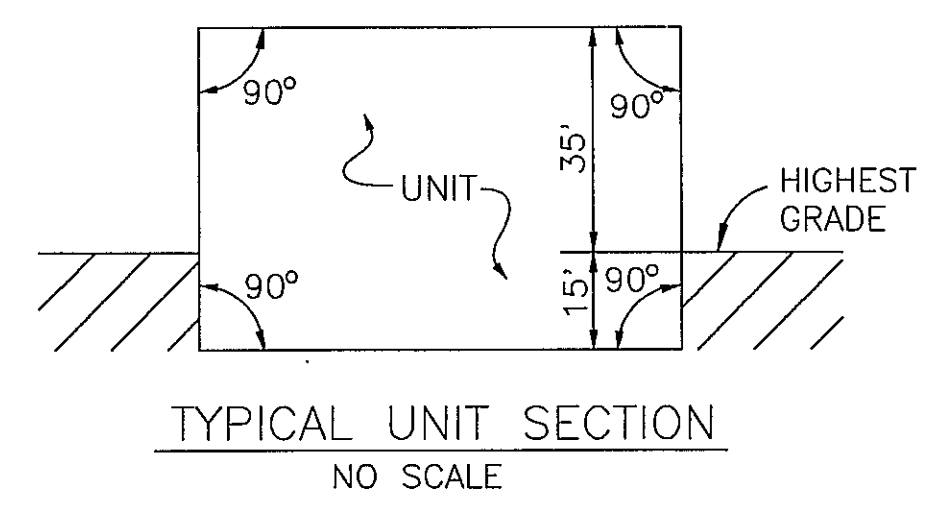
NOTE: 1. THE ROADS WITHIN NORTH SHORE COMMONS ARE PRIVATE ROADS WHICH WILL BE MAINTAINED BY THE NORTH SHORE COMMONS ASSOCIATION. EASEMENTS OVER LAKEWOOD SHORES DRIVE, OAK BLUFF COURT, STILLMEADOW DRIVE AND MACKENZIE COURT WERE CREATED IN THE DECLARATION OF EASEMENTS, COVENANTS, CONDITIONS AND RESTRICTIONS FOR THE NORTH SHORE COMMUNITY AS RECORDED IN LIBER 1947, PAGE 0049, LIVINGSTON COUNTY RECORDS.

LAKEWOOD SHORES DRIVE, OAK BLUFF COURT, STILLMEADOW DRIVE AND MACKENZIE COURT WILL BE OWNED AND MAINTAINED BY THE NORTH SHORE COMMUNITY ASSOCIATION UNTIL SUCH TIME AS THEY ARE DEDICATED TO THE PUBLIC.

2. ALL ROADWAYS, STORM SEWER, SANITARY SEWER AND WATER MAIN WITHIN NORTH SHORE COMMONS MUST BE BUILT.

3. UNITS 1 THROUGH 49 MUST BE BUILT.

4. ALL LIMITED COMMON YARD AREAS ARE CONVERTABLE AREAS WHICH MAY BE MODIFIED.



A circular professional seal for Gary R. Boss, a Registered Professional Engineer and Surveyor in the State of Michigan. The seal features the text "STATE OF MICHIGAN" at the top, "GARY R. BOSS" in the center, "REG. LAND SURVEYOR & PROF. ENGINEER" around the bottom, and "LICENSE NO. 11022" at the bottom center. A signature is written across the seal.

BOSS ENGINEERING
ENGINEERS & SURVEYORS

 3121 E. GRAND RIVER
HOWELL (517) 546-4836
HOWELL, MICHIGAN 48843
BRIGHTON (313) 229-4773
FAX (517) 548-1670

[illegible]

CLIENT	NORTH SHORE LAND DEVELOPMENT
PROJECT	NORTH SHORE COMMONS
TITLE	UNIT AREAS & PERIMETERS

[illegible]

DESIGNED BY: KCS
DRAWN BY: CEA
CHECKED BY: DBL
SCALE 1"=40'
JOB NO. 95034
DWG. NO. H:95034X20
DATE 2-9-96
SHEET NO.