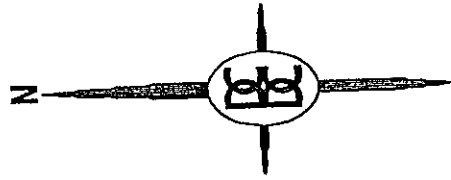
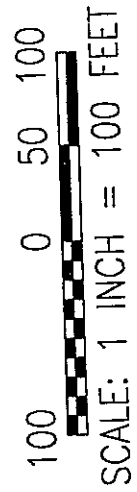
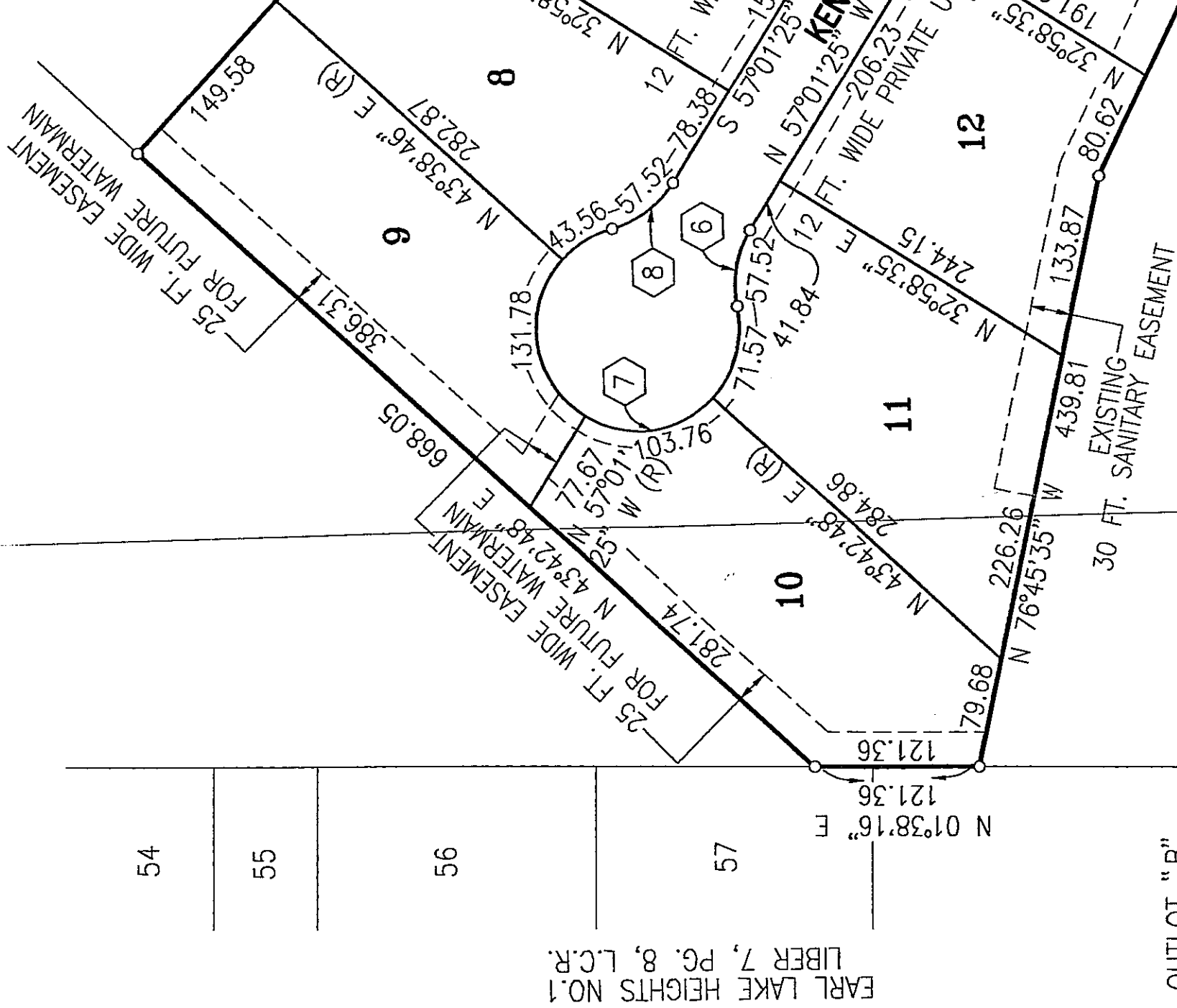


UNIT AREAS & PERIMETER PLAN

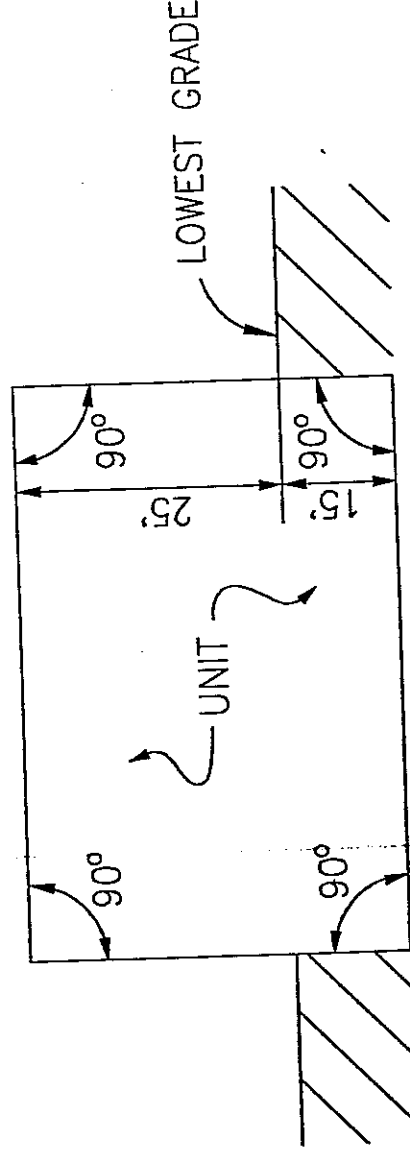


SCHEDULE OF UNIT AREAS		
UNIT NO.	AREA (SQ. FT.)	UNIT NO.
1	45,440	8
2	45,440	9
3	43,560	10
4	43,560	11
5	43,560	12
6	43,560	13
7	43,560	

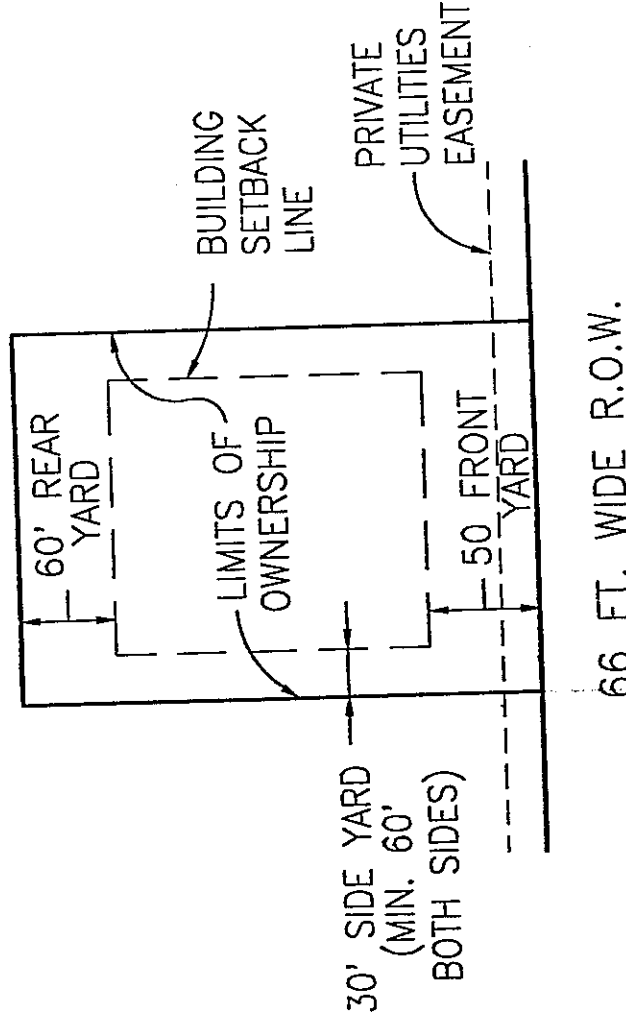


CURVE DATA				
CURVE	RADIUS	CENTRAL ANGLE	ARC LENGTH	CHORD LENGTH
1	197.00	31°04'23"	106.84	105.53
2	263.00	14°37'44"	67.15	66.97
3	263.00	37°06'48"	170.36	167.40
4	333.00	27°23'02"	159.15	157.64
5	267.00	21°44'12"	101.29	100.69
6	75.00	43°56'44"	57.52	56.12
7	75.00	267°53'28"	350.67	108.00
8	75.00	43°56'44"	57.52	56.12
9	333.00	21°44'11"	126.33	125.58
10	267.00	27°23'02"	127.61	126.40
11	197.00	37°06'48"	127.61	125.39

CURVE DATA		
CURVE	BEARING DIRECTION	CHORD LENGTH
1	N 14°14'48" W	105.53
2	N 19°32'04" W	66.97
3	N 81°13'40" W	167.40
4	N 48°58'45" W	157.64
5	N 46°09'19" W	100.69
6	N 78°59'47" W	56.12
7	N 32°58'35" E	108.00
8	S 35°03'03" E	56.12
9	S 46°09'19" E	125.58
10	S 48°58'45" E	126.40
11	S 81°13'40" E	125.39



TYPICAL UNIT SECTION
NO SCALE



TYPICAL UNIT
PLAN VIEW
NO SCALE

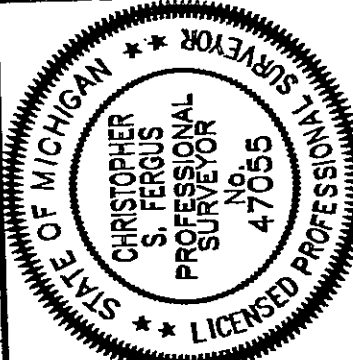
CL OF CHAR-ANN DRIVE (66 FT. WIDE)
(66 FT. WIDE ROAD EASEMENT
FOR INGRESS/EGRESS LIBER 743,
PG.S 604-605, L.C.R.)
(PRIVATE)

NOTES:

1. KENEMOND DRIVE IS A PRIVATE ROAD.
2. BEARINGS WERE ESTABLISHED FROM THE PLAT OF "EARL LAKE HEIGHTS NO. 1", AS RECORDED IN LIBER 7 OF PLATS, PAGE 8, LIVINGSTON COUNTY RECORDS.

LEGEND

- UNIT NUMBER
- CONCRETE MONUMENT 4" DIAMETER
36" LONG ENCASED 1/2" IRON ROD
- RADIAL LOT LINE
- CURVE NUMBER DESIGNATION



DESIGNED BY:	PJF
DRAWN BY:	WHN
CHECKED BY:	
SCALE:	1" = 100'
JOB NO.:	01044
DATE:	8-03-01
PLOTTING INFORMATION	