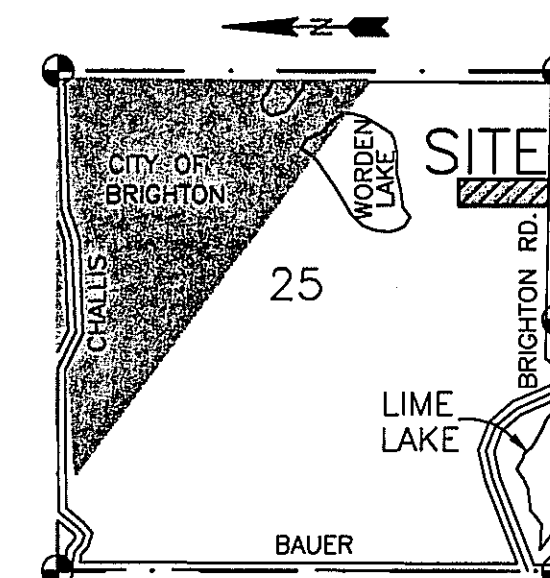


THIS PLAT IS SUBJECT TO RESTRICTIONS
REQUIRED BY ACT 288 OF 1967, AS AMENDED
ON CERTAIN LOTS WITH RESPECT TO THE
REQUIREMENTS OF THE MICHIGAN DEPARTMENT
OF ENVIRONMENTAL QUALITY/LIVINGSTON COUNTY
HEALTH DEPARTMENT WHICH IS RECORDED IN
LIBER 2732, PAGES 888-907 OF RECORDS
OF THIS COUNTY.

WORDEN LAKE WOODS

A PART OF THE SE 1/4 OF SECTION 25, T2N-R5E,
GENOA TOWNSHIP, LIVINGSTON COUNTY, MICHIGAN

SHEET 1 OF 2 SHEETS



LOCATION MAP
1"=2000'
GENOA TOWNSHIP
T2N - R5E

USE OF THE WORD "PRIVATE" DOES NOT
LIMIT IN ANY WAY THE SCOPE OF THE
EASEMENT GRANTED TO THE LIVINGSTON
COUNTY DRAIN COMMISSIONER.

LEGEND:

ALL DIMENSIONS ARE SHOWN IN FEET.

ALL CURVILINEAR DIMENSIONS ARE SHOWN
ALONG THE ARC.

THE SYMBOL "O" INDICATES A CONCRETE
MONUMENT, WHICH IS 4" IN DIAMETER X 36"
LONG, ENCASED IN A 1/2" IRON ROD.

THE SYMBOL (R) DENOTES A RADIAL LOT
LINE.

THE SYMBOL (NR) DENOTES A NON-RADIAL LOT
LINE.

ALL LOT MARKERS ARE 1/2 INCH IRON RODS
AND ARE 18 INCHES IN LENGTH. (NOT CAPPED)

BEARINGS WERE ESTABLISHED FROM THE RECORDED
PLAT OF "MT. BRIGHTON SUBDIVISION No. 2," A
SUBDIVISION AS RECORDED IN LIBER 13 OF PLATS,
PAGES 12-13, LIVINGSTON COUNTY RECORDS.

THE SYMBOL (23) DENOTES DISTANCE FROM PROPERTY
TO WETLAND BOUNDARY.

THE SYMBOL (23) DENOTES DISTANCE FROM
PROPERTY/BOUNDARY TO EASEMENT LINE.

ALL DRAINAGE STRUCTURES, CHANNELS AND DETENTION
AREAS ARE UNDER THE JURISDICTION OF THE
LIVINGSTON COUNTY DRAIN COMMISSIONER AND THE
WORDEN LAKE WOODS DRAIN DRAINAGE DISTRICT.

PREPARED AND DRAFTED BY:

BOSS ENGINEERING COMPANY
3121 EAST GRAND RIVER
HOWELL, MICHIGAN 48843

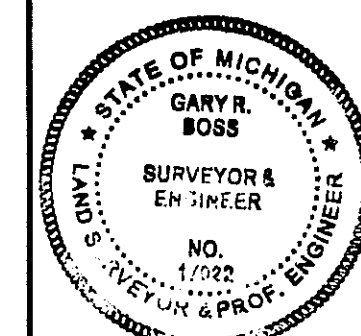
Gary R. Boss
GARY R. BOSS

CERTIFIED TRUE COPY OF
RECORDED PLAT
BY DEPARTMENT OF CONSUMER
AND INDUSTRY SERVICES

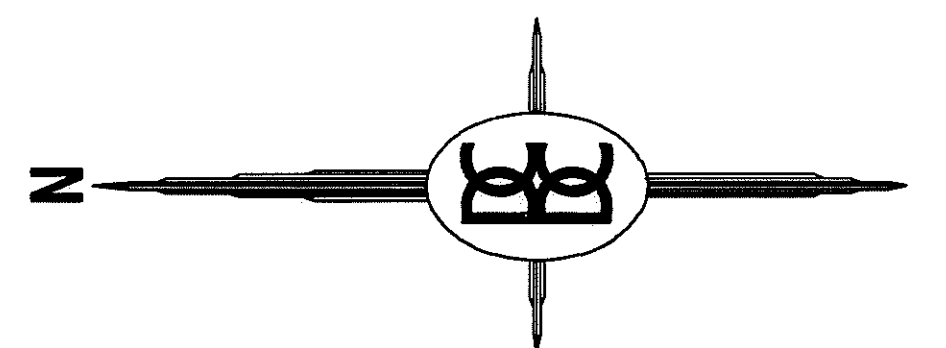
BY *Maynard R. Dyer*
MAYNARD R. DYER, P.S., MANAGER
SUBDIVISION CONTROL AND
SURVEY & REMONUMENTATION
SECTION

DATE 4-6-00

SURVEYOR'S SEAL

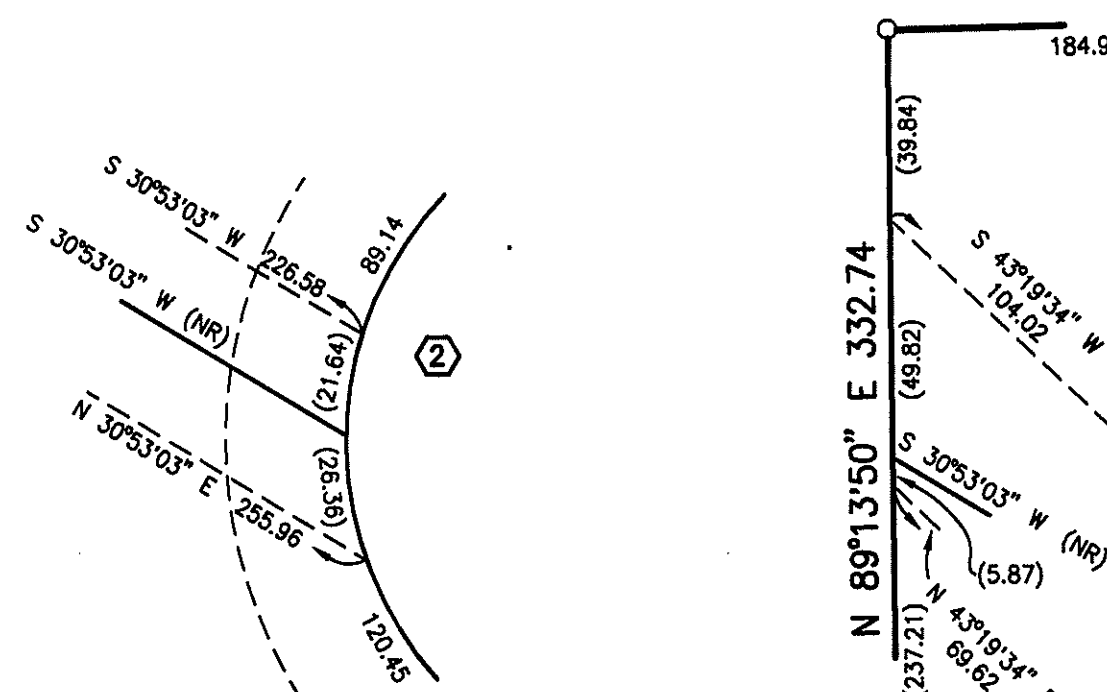
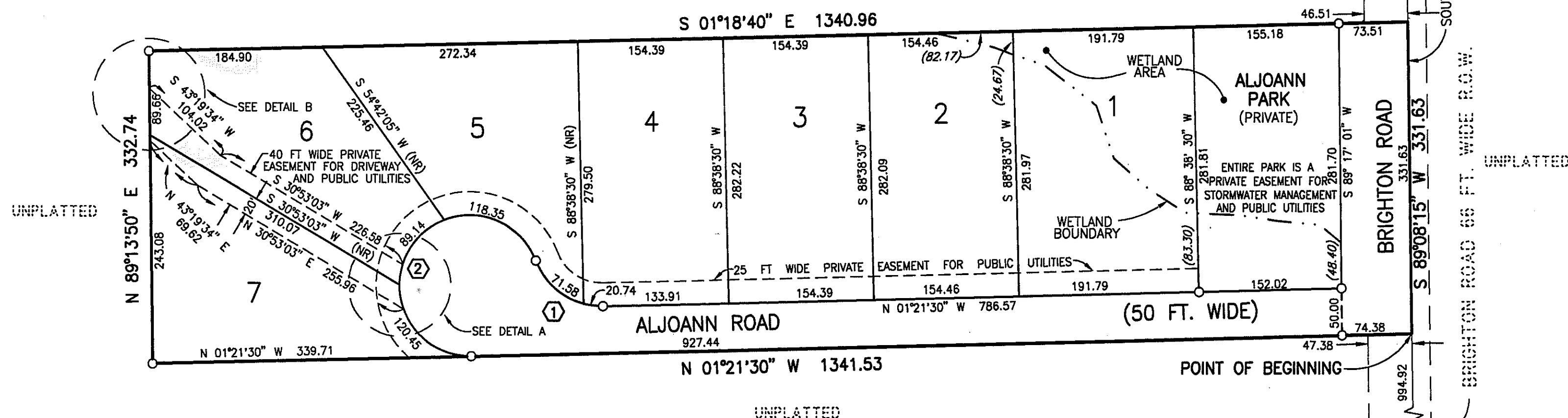


LIBER PAGE



SCALE: 1" = 100'

UNPLATTED



DETAIL A
SCALE: 1" = 40'

DETAIL B
SCALE: 1" = 40'

CURVE DATA					
NUMBER	DELTA	LENGTH	RADIUS	CHORD	BEARING
1	70°31'44"	92.32	75.00	86.60	S 56°05'38" E
2	250°31'44"	327.94	75.00	122.47	S 33°54'22" W