

SHEET 1 OF 5  
LIBER \_\_\_\_\_ PAGE \_\_\_\_\_

SEC. 3

SITE

UNNAMED POND

LAKE CHEMUNG

HUGHES ROAD

GRAND RIVER AVENUE

SEC. 9

SEC. 10

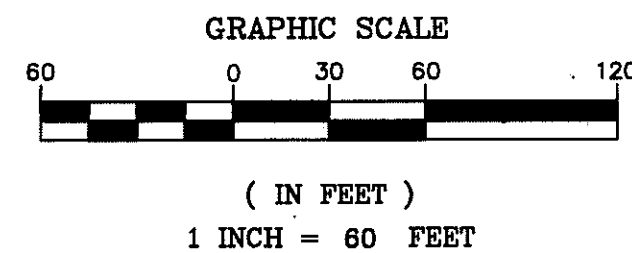
SEC. 11

I-96

SEC. 15

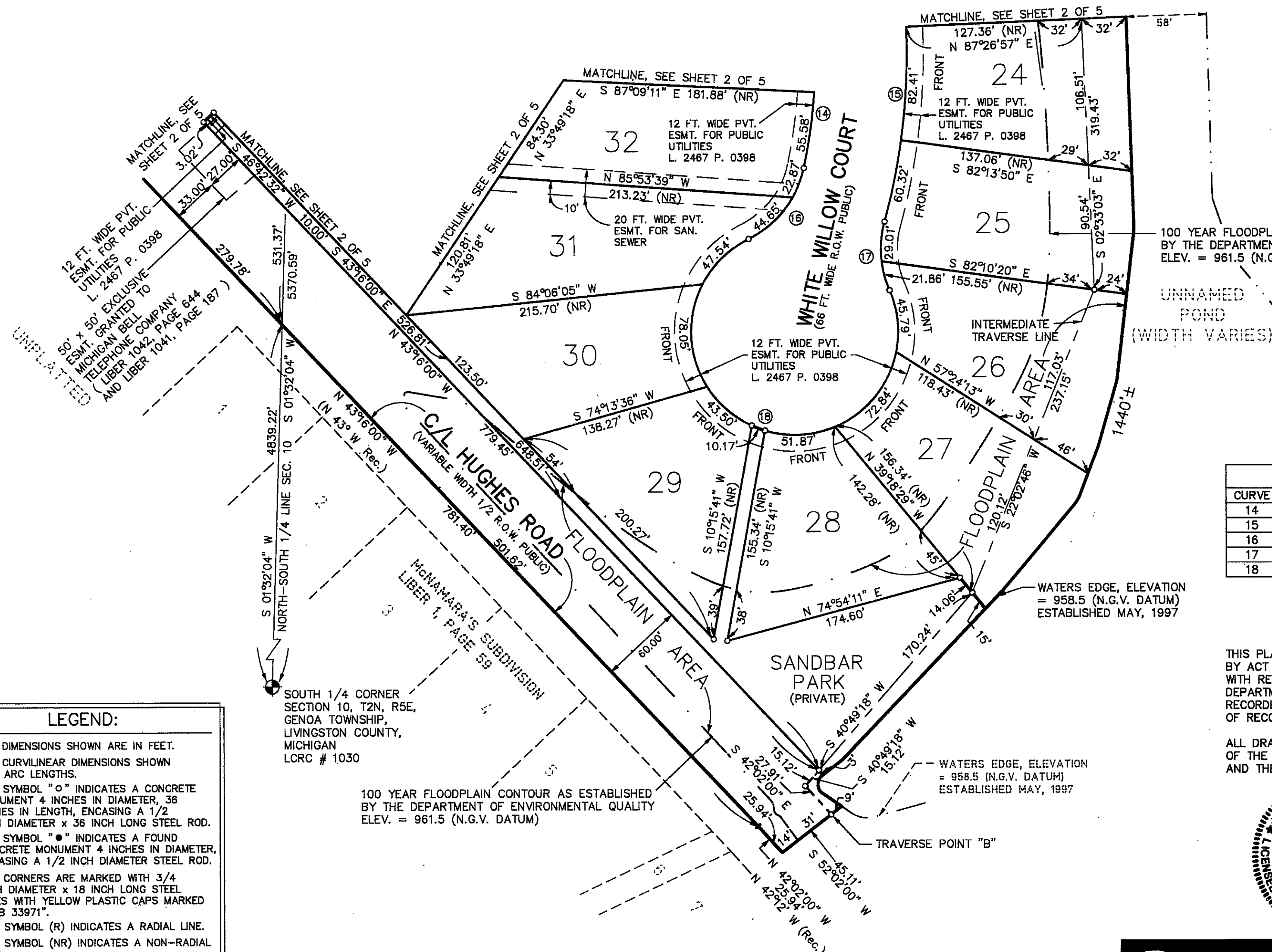
LOCATION MAP

NO SCALE



BY: Maynard R. Dyer *rd*  
MAYNARD R. DYER, P.S.  
MANAGER  
SUBDIVISION CONTROL SECTION

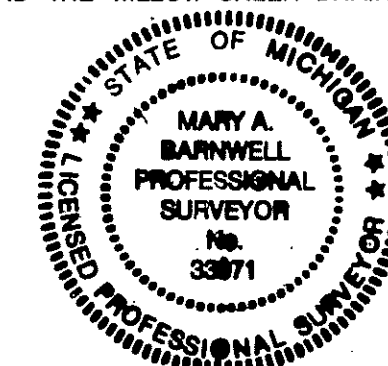
DATE 8-6-99



CURVE TABLE					
CURVE	RADIUS	LENGTH	CHORD	BEARING	DELTA
14	392.00'	278.60'	272.77'	N 08°14'08" W	40°43'13"
15	458.00'	351.44'	342.88'	N 06°36'48" W	43°57'54"
16	75.00'	67.52'	65.26'	N 37°54'57" E	51°34'57"
17	75.00'	50.87'	49.90'	S 04°03'44" E	38°51'46"
18	75.00'	349.76'	108.63'	S 69°53'36" E	26°12'02"

THIS PLAT IS SUBJECT TO RESTRICTIONS AS REQUIRED BY ACT 288 OF 1967, AS AMENDED ON CERTAIN LOTS WITH RESPECT TO THE REQUIREMENTS OF THE MICHIGAN DEPARTMENT OF ENVIRONMENTAL QUALITY, WHICH ARE RECORDED IN LIBER 2621, PAGE(S) 993-908 OF RECORDS OF THIS COUNTY.

ALL DRAIN EASEMENTS ARE UNDER THE JURISDICTION  
OF THE LIVINGSTON COUNTY DRAIN COMMISSIONER  
AND THE WILLOW CREEK DRAIN DRAINAGE DISTRICT.



MARY A. BARNWELL  
PROFESSIONAL SURVEYOR  
SURVEYOR NO. 33971

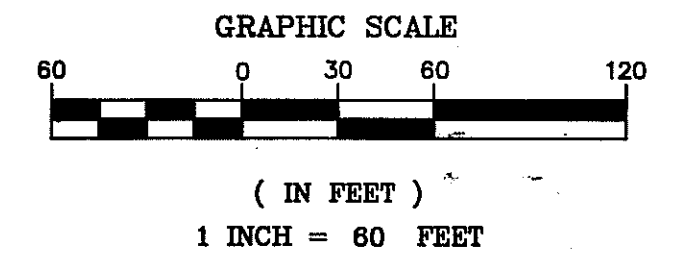
**DESINE INC.**  
**ENGINEERS**

7011 GRAND RIVER AVE.  
BRIGHTON, MICHIGAN 48114  
(810) 227-9533

# WILLOW CREEK

SHEET 2 OF 5  
LIBER \_\_\_\_\_ PAGE \_\_\_\_\_

A Subdivision of Part of the SW 1/4 & SE 1/4 of Section 3 and a  
Part of the NW 1/4 & NE 1/4 of Section 10, Town 2 North, Range 5 East,  
Genoa Township, Livingston County, Michigan



LOCATION MAP  
NO SCALE

SOUTHEAST CORNER  
SECTION 3, T2N, R5E,  
GENOA TOWNSHIP,  
LIVINGSTON COUNTY,  
MICHIGAN  
LCRC # 641M

WATERS EDGE, ELEVATION = 958.5 (N.G.V. DATUM)  
ESTABLISHED MAY, 1997

100 YEAR FLOODPLAIN CONTOUR AS ESTABLISHED  
BY THE DEPARTMENT OF ENVIRONMENTAL QUALITY  
ELEV. = 961.5 (N.G.V. DATUM)

WATERS EDGE, ELEVATION  
= 958.5 (N.G.V. DATUM)  
ESTABLISHED MAY, 1997

THIS PLAT IS SUBJECT TO RESTRICTIONS AS REQUIRED  
BY ACT 288 OF 1967, AS AMENDED ON CERTAIN LOTS  
WITH RESPECT TO THE REQUIREMENTS OF THE MICHIGAN  
DEPARTMENT OF ENVIRONMENTAL QUALITY, WHICH ARE  
RECORDED IN LIBER 2621, PAGE(S) 313-500,  
OF RECORDS OF THIS COUNTY.

ALL DRAIN EASEMENTS ARE UNDER THE JURISDICTION  
OF THE LIVINGSTON COUNTY DRAIN COMMISSIONER  
AND THE WILLOW CREEK DRAIN DRAINAGE DISTRICT.

## LEGEND:

- 1) ALL DIMENSIONS SHOWN ARE IN FEET.
- 2) ALL CURVILINEAR DIMENSIONS SHOWN  
ARE ARC LENGTHS.
- 3) THE SYMBOL "O" INDICATES A CONCRETE  
MONUMENT 4 INCHES IN DIAMETER, 36  
INCHES IN LENGTH, ENCASED A 1/2  
INCH DIAMETER x 36 INCH LONG STEEL ROD.
- 4) THE SYMBOL "•" INDICATES A FOUND  
CONCRETE MONUMENT 4 INCHES IN DIAMETER,  
ENCASED A 1/2 INCH DIAMETER STEEL ROD.
- 5) LOT CORNERS ARE MARKED WITH 3/4  
INCH DIAMETER x 18 INCH LONG STEEL  
PIPES WITH YELLOW PLASTIC CAPS MARKED  
"MAB 33971".
- 6) THE SYMBOL (R) INDICATES A RADIAL LINE.
- 7) THE SYMBOL (NR) INDICATES A NON-RADIAL  
LINE.
- 8) BEARINGS WERE ESTABLISHED FROM  
"RED OAKS OF CHEMUNG No.8",  
A SUBDIVISION RECORDED IN LIBER 20 OF  
PLATS, PAGES 46 THROUGH 48, INCLUSIVE,  
LIVINGSTON COUNTY RECORDS.

## CURVE TABLE

CURVE	RADIUS	LENGTH	CHORD	BEARING	DELTA
3	333.00'	51.26'	51.21'	S 38°52'53" E	08°49'10"
4	267.00'	41.10'	41.06'	S 38°52'53" E	08°49'10"
5	30.00'	47.12'	42.43'	N 01°42'32" E	90°00'00"
6	30.00'	47.12'	42.43'	S 88°17'28" E	90°00'00"
7	333.00'	85.41'	85.17'	S 54°03'24" W	14°41'43"
8	267.00'	68.48'	68.29'	S 54°03'24" W	14°41'43"
9	30.00'	47.12'	42.43'	N 73°35'45" W	90°00'00"
10	30.00'	47.12'	42.43'	N 16°24'15" E	90°00'00"
14	392.00'	278.60'	272.77'	N 08°14'08" W	40°43'13"
15	458.00'	351.44'	342.88'	N 06°36'48" W	43°57'54"

**DESINE INC**  
**ENGINEERS**  
7011 GRAND RIVER AVE.  
BRIGHTON, MICHIGAN 48114  
(810) 227-9533

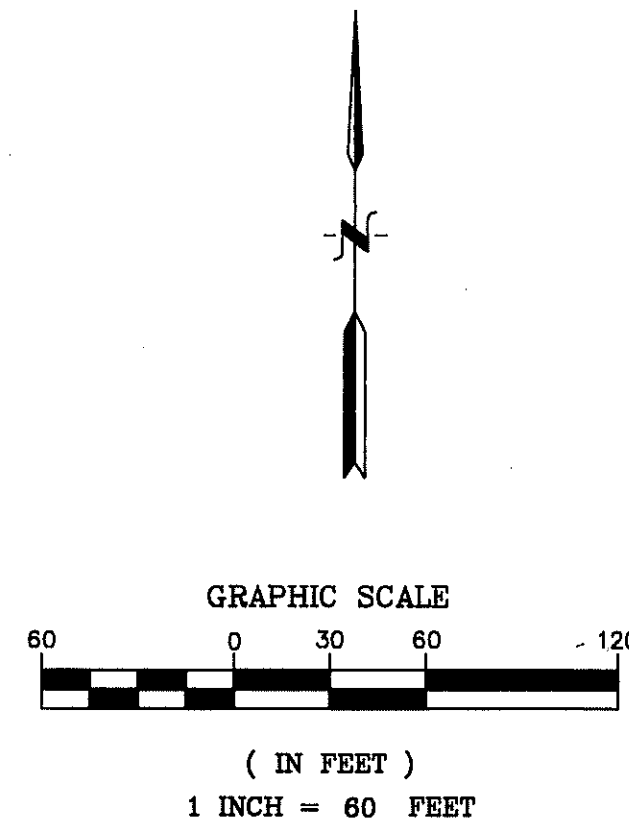
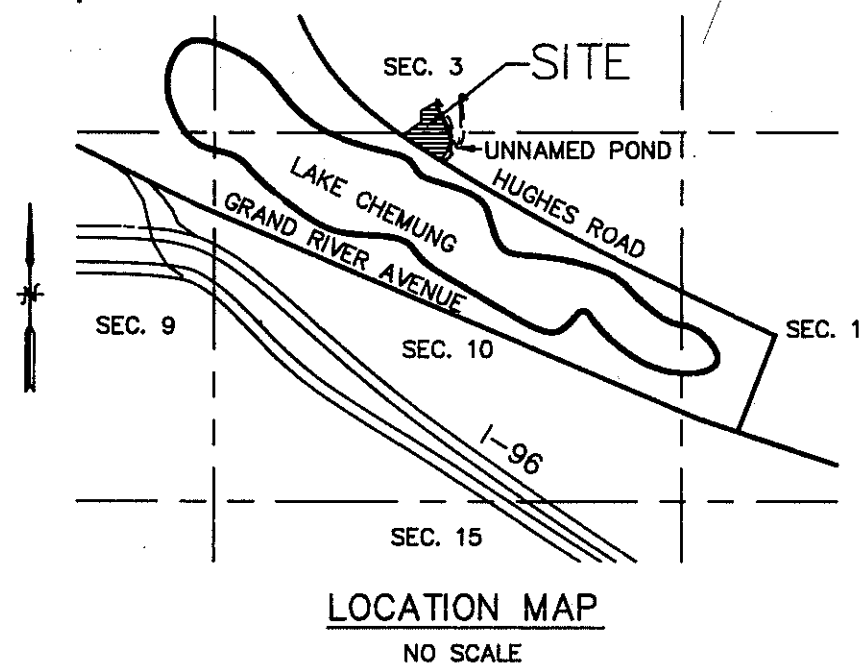


MARY A. BARNWELL  
PROFESSIONAL SURVEYOR  
SURVEYOR NO. 33971

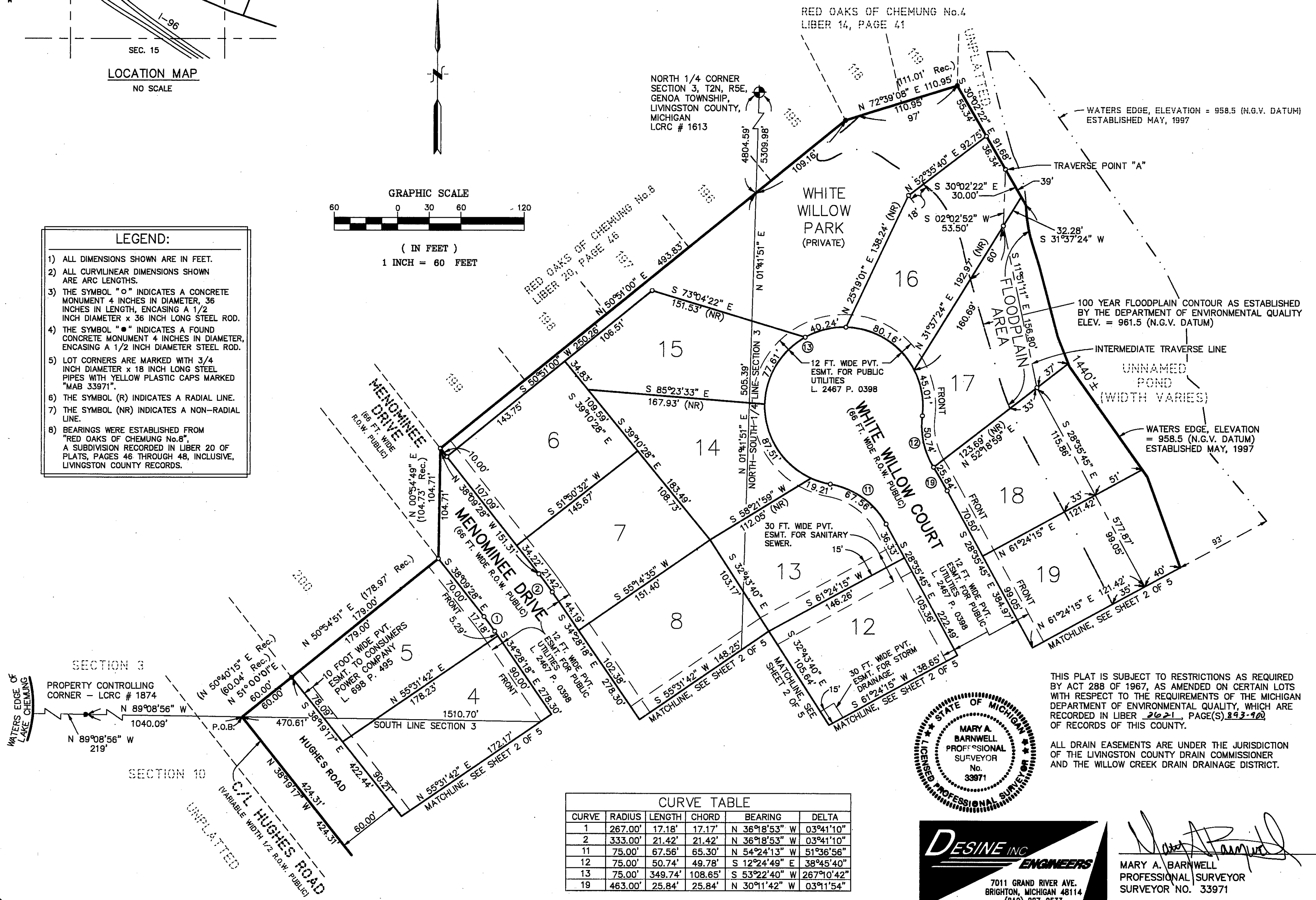
# WILLOW CREEK

SHEET 3 OF 5  
LIBER \_\_\_\_\_ PAGE \_\_\_\_\_

A Subdivision of Part of the SW 1/4 & SE 1/4 of Section 3 and a Part of the NW 1/4 & NE 1/4 of Section 10, Town 2 North, Range 5 East, Genoa Township, Livingston County, Michigan



- LEGEND:**
- 1) ALL DIMENSIONS SHOWN ARE IN FEET.
  - 2) ALL CURVILINEAR DIMENSIONS SHOWN ARE ARC LENGTHS.
  - 3) THE SYMBOL "o" INDICATES A CONCRETE MONUMENT 4 INCHES IN DIAMETER, 36 INCHES IN LENGTH, ENCASED A 1/2 INCH DIAMETER x 36 INCH LONG STEEL ROD.
  - 4) THE SYMBOL "•" INDICATES A FOUND CONCRETE MONUMENT 4 INCHES IN DIAMETER, ENCASED A 1/2 INCH DIAMETER STEEL ROD.
  - 5) LOT CORNERS ARE MARKED WITH 3/4 INCH DIAMETER x 18 INCH LONG STEEL PIPES WITH YELLOW PLASTIC CAPS MARKED "MAB 33971".
  - 6) THE SYMBOL (R) INDICATES A RADIAL LINE.
  - 7) THE SYMBOL (NR) INDICATES A NON-RADIAL LINE.
  - 8) BEARINGS WERE ESTABLISHED FROM "RED OAKS OF CHEMUNG No. 8", A SUBDIVISION RECORDED IN LIBER 20 OF PLATS, PAGES 46 THROUGH 48, INCLUSIVE, LIVINGSTON COUNTY RECORDS.



CURVE	RADIUS	LENGTH	CHORD	BEARING	DELTA
1	267.00'	17.18'	17.17'	N 36°18'53" W	03°41'10"
2	333.00'	21.42'	21.42'	N 36°18'53" W	03°41'10"
11	75.00'	67.56'	65.30'	N 54°24'13" W	51°36'56"
12	75.00'	50.74'	49.78'	S 12°24'49" E	38°45'40"
13	75.00'	349.74'	108.65'	S 53°22'40" W	267°10'42"
19	463.00'	25.84'	25.84'	N 30°11'42" W	03°11'54"



**DESINE INC**  
**ENGINEERS**  
7011 GRAND RIVER AVE.  
BRIGHTON, MICHIGAN 48114  
(810) 227-9533

MARY A. BARNWELL  
PROFESSIONAL SURVEYOR  
SURVEYOR NO. 33971

THIS PLAT IS SUBJECT TO RESTRICTIONS AS REQUIRED BY ACT 288 OF 1967, AS AMENDED ON CERTAIN LOTS WITH RESPECT TO THE REQUIREMENTS OF THE MICHIGAN DEPARTMENT OF ENVIRONMENTAL QUALITY, WHICH ARE RECORDED IN LIBER 2621, PAGE(S) 893-900 OF RECORDS OF THIS COUNTY.

ALL DRAIN EASEMENTS ARE UNDER THE JURISDICTION OF THE LIVINGSTON COUNTY DRAIN COMMISSIONER AND THE WILLOW CREEK DRAIN DRAINAGE DISTRICT.