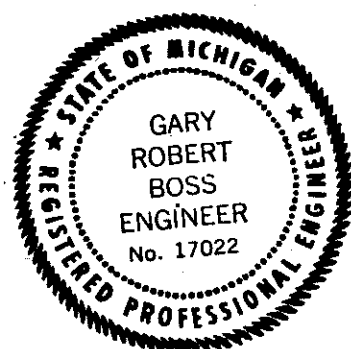


"TIMBERVIEW FARMS NO.2"

PART OF THE NW 1/4 OF SEC. 33, T.2N.-R.5E., GENOA TOWNSHIP, LIVINGSTON COUNTY, MICHIGAN.

Scale: 1 inch=100'



PREPARED AND DRAFTED BY
BOSS ENGINEERING COMPANY
3121 EAST GRAND RIVER
HOWELL, MICHIGAN 48843

Alison Green
STATE TREASURER
October 21, 1996

SHEET 1
OF
3 SHEETS

CURVE DATA

NO.	DELTA	TAN.	RADIUS	ARC	CHORD	CH. BRG.
1	20° 53' 08"	140.07	760.00	277.04	275.51	N. 39° 50' 50" E.
2	20° 53' 08"	152.24	826.00	301.09	299.43	N. 39° 50' 50" E.
3	90° 00' 00"	20.00	20.00	31.42	28.28	N. 74° 24' 17" E.
4	90° 00' 00"	20.00	20.00	31.42	28.28	N. 15° 35' 43" W.
5	45° 00' 00"	81.60	197.00	154.72	150.78	N. 51° 54' 17" E.
6	45° 00' 00"	108.94	263.00	206.56	201.29	N. 51° 54' 17" E.
7	24° 14' 31"	78.60	366.00	154.85	153.70	S. 88° 31' 33" E.
8	45° 00' 00"	124.26	300.00	235.62	229.61	S. 83° 05' 43" E.
9	82° 06' 29"	17.42	20.00	28.66	26.27	N. 57° 35' 30" E.
10	82° 06' 29"	17.42	20.00	28.66	26.27	N. 24° 31' 00" W.
11	18° 24' 03"	75.64	467.00	149.98	149.34	N. 07° 20' 14" E.
12	18° 24' 03"	86.33	535.00	171.18	170.44	N. 07° 20' 14" E.
13	12° 10' 38"	43.89	411.45	87.45	87.28	N. 04° 15' 31" E.
14	12° 12' 42"	50.96	476.34	101.52	101.33	N. 04° 12' 28" E.
15	90° 00' 00"	20.00	20.00	31.42	28.28	N. 43° 06' 08" E.
16	72° 37' 00"	144.76	197.00	249.68	235.30	S. 24° 17' 13" E.
17	72° 37' 00"	193.25	263.00	333.33	311.46	S. 24° 17' 13" E.
18	107° 23' 00"	357.92	263.00	492.91	423.87	S. 65° 42' 47" W.
19	107° 23' 00"	268.10	197.00	369.22	317.50	S. 65° 42' 47" W.
20	04° 58' 31"	15.90	366.00	31.78	31.77	N. 63° 05' 00" W.

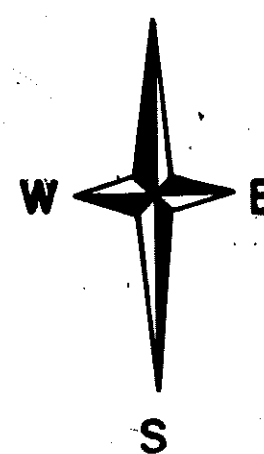
PLAT LEGEND

All dimensions are shown in feet.
All curvilinear dimensions are shown along the arc.

All bearings are in relation to Timberview Farms No. 1 as recorded in Liber 691, Pages 590-595.

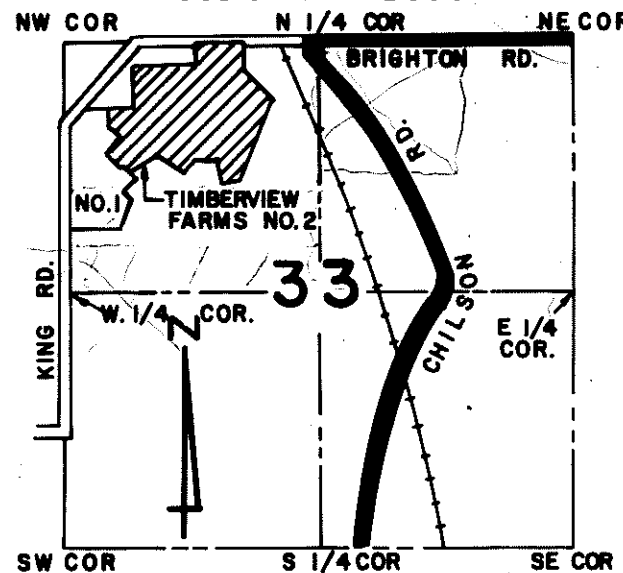
The symbol "O" indicates a concrete monument.

All lot markers are 1/2 inch iron rods and are 18 inches in length.



LOCATION MAP

Scale: 1" = 2000'



GENOA TOWNSHIP, T.2N.-R.5E.
LIVINGSTON COUNTY, MICHIGAN

NOTE

ALL DRAIN EASEMENTS AND RETENTION AREAS ARE UNDER THE JURISDICTION OF THE LIVINGSTON COUNTY DRAIN COMMISSION.

This plat is subject to restrictions as required by Act 288 of 1967, as amended on certain lots with respect to the requirements of the Michigan Department of Natural Resources and/or the Michigan Department of Public Health, which are recorded in Liber 748, Pages 460-465 InCL. of records of this county.

FREEBOARD LINE AS ESTABLISHED BY THE DEPARTMENT OF NATURAL RESOURCES, ELEV. 930.0 (USGS DATUM)