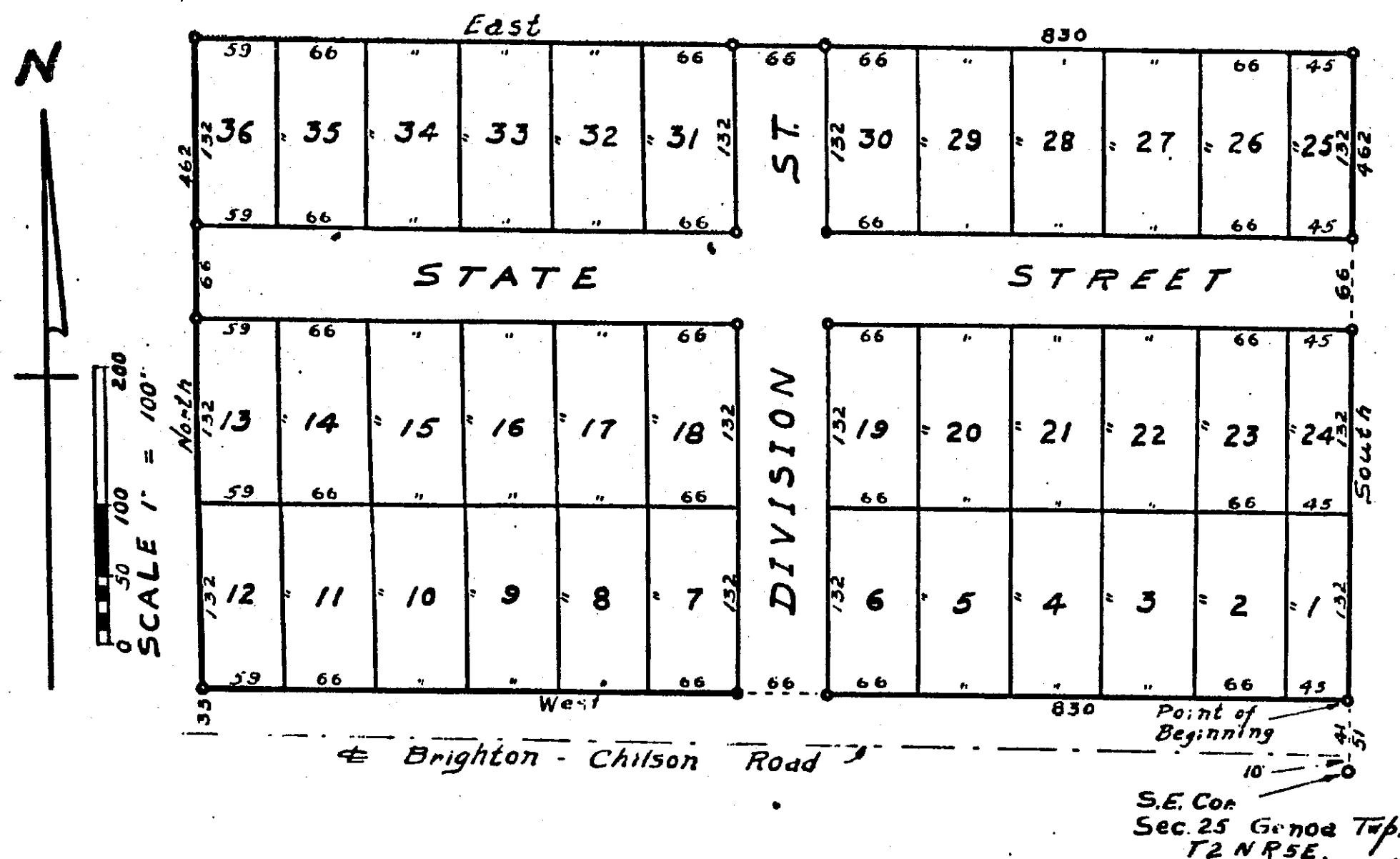


PLAT OF "SUNSET SUBDIVISION."

A part of SE $\frac{1}{4}$ SE $\frac{1}{4}$ Sec. 25,
T2N R5E, Genoa Township,
Livingston Co. Mich.



DESCRIPTION OF LAND PLATTED.

THE LAND EMBRACED IN THE ANNEXED PLAT OF "SUNSET SUBDIVISION", A PART OF SE $\frac{1}{4}$ SE $\frac{1}{4}$ SEC. 25, T2N R5E, GENOA TOWNSHIP, LIVINGSTON CO. MICH., IS DESCRIBED AS FOLLOWS: BEGINNING AT A POINT 51 FT. NORTH OF THE S.E. COR. OF SAID SEC. 25, THENCE WEST 830 FT.; NORTH 462 FT.; EAST 830 FT.; SOUTH 462 FT. TO POINT OF BEGINNING.

CERTIFICATE OF MUNICIPAL APPROVAL

THIS PLAT WAS APPROVED BY THE TOWNSHIP BOARD OF THE TOWNSHIP OF GENOA AT A MEETING HELD October 30, 1940

Charles F. Hanson CLERK
CHARLES HANSON

CERTIFICATE OF APPROVAL BY COUNTY BOARD

THIS PLAT WAS APPROVED ON 7th DAY OF November 1940.

Willis L. Lyons JUDGE OF PROBATE.
WILLIS L. LYONS

John A. Hagman COUNTY CLERK.
JOHN A. HAGMAN

Jennie M. Eastman COUNTY TREASURER.
JENNIE M. EASTMAN

Examined and Approved

November 13, 1940

Mayne Jewell Purdy

DEPUTY AUDITOR GENERAL

DEDICATION

KNOW ALL MEN BY THESE PRESENTS, THAT WE ERIC REINER AND HELEN REINER, HIS WIFE, REX REINER AND ADA REINER, HIS WIFE, AND LYMAN J. REINER, SINGLE, AS PROPRIETORS, HAVE CAUSED THE LAND EMBRACED IN THE ANNEXED PLAT TO BE SURVEYED, LAID OUT AND PLATTED, TO BE KNOWN AS "SUNSET SUBDIVISION", A PART OF SE $\frac{1}{4}$ SE $\frac{1}{4}$ SEC. 25, T2N R5E, GENOA TOWNSHIP, LIVINGSTON CO. MICH. AND THAT THE STREETS AND ALLEYS AS SHOWN ON SAID PLAT ARE HEREBY DEDICATED TO THE USE OF THE PUBLIC.

SIGNED AND SEALED IN PRESENCE OF

W. R. LADNER (L.S.)
W. R. LADNER (L.S.)
W. R. LADNER (L.S.)
W. R. LADNER (L.S.)
W. R. LADNER (L.S.)
W. R. LADNER (L.S.)
W. R. LADNER (L.S.)
W. R. LADNER (L.S.)
W. R. LADNER (L.S.)
W. R. LADNER (L.S.)

STATE OF MICHIGAN)
COUNTY OF LIVINGSTON) ss.

ON THIS 22nd DAY OF October 1940 BEFORE ME, A NOTARY PUBLIC IN AND FOR SAID COUNTY, PERSONALLY CAME THE ABOVE NAMED ERIC REINER, HELEN R. REINER, REX REINER, ADA REINER, AND LYMAN J. REINER. KNOWN TO ME TO BE THE PERSONS WHO EXECUTED THE ABOVE DEDICATION AND ACKNOWLEDGED THE SAME TO BE THEIR FREE ACT AND DEED.

W. R. LADNER NOTARY PUBLIC LIVINGSTON Co., MICH.

MY COMMISSION EXPIRES April 28, 1941

SURVEYOR'S CERTIFICATE

I HEREBY CERTIFY THAT THE PLAT HEREON DELINEATED IS A CORRECT ONE AND THAT PERMANENT METAL MONUMENTS CONSISTING OF BARS NOT LESS THAN ONE-HALF INCH IN DIAMETER AND 48 INCHES IN LENGTH, (OR SHORTER BARS OF NOT LESS THAN ONE-HALF INCH IN DIAMETER LAPPED OVER EACH OTHER AT LEAST 6 INCHES WITH AN OVER-ALL LENGTH OF NOT LESS THAN 48 INCHES,) ENCASED IN A CONCRETE CYLINDER AT LEAST 4 INCHES IN DIAMETER AND 48 INCHES IN DEPTH HAVE BEEN PLACED AT POINTS MARKED THUS O AS THEREON SHOWN AT ALL ANGLES IN THE BOUNDARIES OF THE LAND PLATTED, AT ALL THE INTERSECTIONS OF STREETS, INTERSECTIONS OF ALLEYS, OF STREETS AND ALLEYS, AND AT THE INTERSECTIONS OF STREETS AND ALLEYS WITH THE BOUNDARIES OF THE PLAT AS SHOWN ON SAID PLAT.

Clay W. Gordon CLAY W. GORDON
REGISTERED LAND SURVEYOR

CERTIFICATE OF APPROVAL BY BOARD OF COUNTY ROAD COMMISSIONERS

THIS PLAT HAS BEEN EXAMINED AND WAS APPROVED ON THE 4 DAY OF November 1940 BY THE LIVINGSTON COUNTY BOARD OF ROAD COMMISSIONERS.

Glenn H. Chubb CHAIRMAN
GLENN H. CHUBB
Tracy F. Randall MEMBER
TRACY F. RANDALL
Rex B. House MEMBER
REX B. HOUSE

COUNTY TREASURER'S CERTIFICATE RELATING TO TAXES

OFFICE OF COUNTY TREASURER, LIVINGSTON COUNTY.

I HEREBY CERTIFY, THAT THERE ARE NO TAX LIENS OR TITLES HELD BY THE STATE ON THE LANDS DESCRIBED HEREON, AND THAT THERE ARE NO TAX LIENS OR TITLES HELD BY INDIVIDUALS ON SAID LANDS, FOR THE FIVE YEARS PRECEDING THE 1st DAY OF November 1940 AND THAT THE TAXES FOR SAID PERIOD OF FIVE YEARS ARE ALL PAID, AS SHOWN BY THE RECORDS OF THIS OFFICE.

Jennie M. Eastman COUNTY TREASURER
JENNIE M. EASTMAN

THESE COPIES OF THIS PLAT ARE HEREBY CERTIFIED TO BE TRUE AND CORRECT COPIES OF THE ORIGINAL PLAT AND ARE HEREBY RECORDED.

November 13, 1940
Mayne Jewell Purdy
DEPUTY AUDITOR GENERAL

FILED IN LIVINGSTON COUNTY AND DEPT.

November 13, 1940
Mayne Jewell Purdy
DEPUTY AUDITOR GENERAL