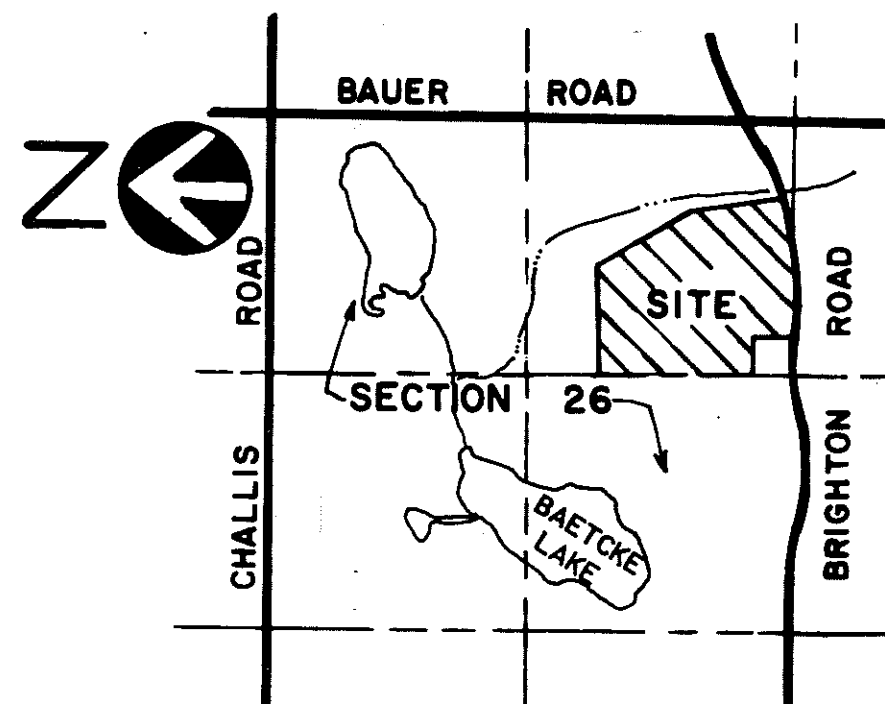
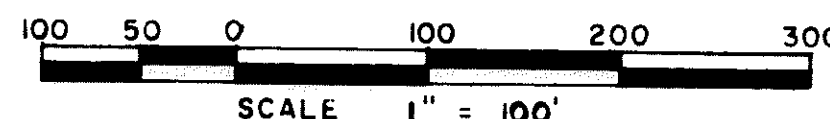
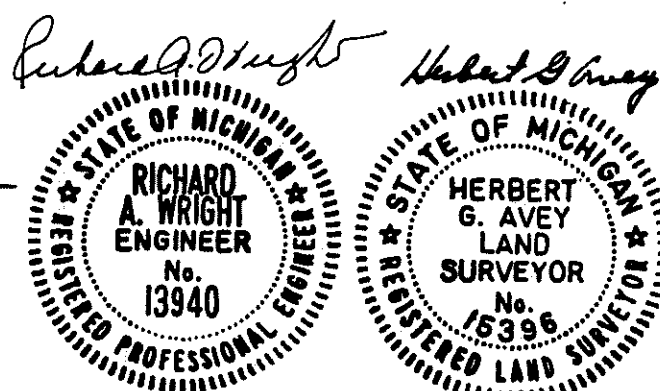


# "ROLLING MEADOWS SUBDIVISION NO. 2" SHEET 1 OF 2

PART OF THE S.E. 1/4 OF SECTION 26, T.2 N., R.5 E.  
GENOA TOWNSHIP, LIVINGSTON COUNTY, MICHIGAN



LOCATION MAP  
SCALE: 1" = 2000'



- LEGEND**
- ALL DIMENSIONS ARE IN FEET.
  - ALL CURVILINEAR DIMENSIONS ARE SHOWN ALONG THE ARC.
  - R - DENOTES RADIAL.
  - N.R. - DENOTES NOT RADIAL.
  - ALL BEARINGS IN THIS PLAT ARE IN RELATION TO BOARD OF COUNTY ROAD COMMISSIONERS OF THE COUNTY OF LIVINGSTON. JOB NO. #T003
  - THE SYMBOL "O" INDICATES A CONCRETE MONUMENT. \*
  - ALL LOT MARKERS ARE 1/2" IRON BARS 18" LONG.
  - \* MONUMENTS ARE 1/2" BARS 3' LONG ENCASED IN CONCRETE CYLINDERS 4" IN DIAMETER AND 3' LONG

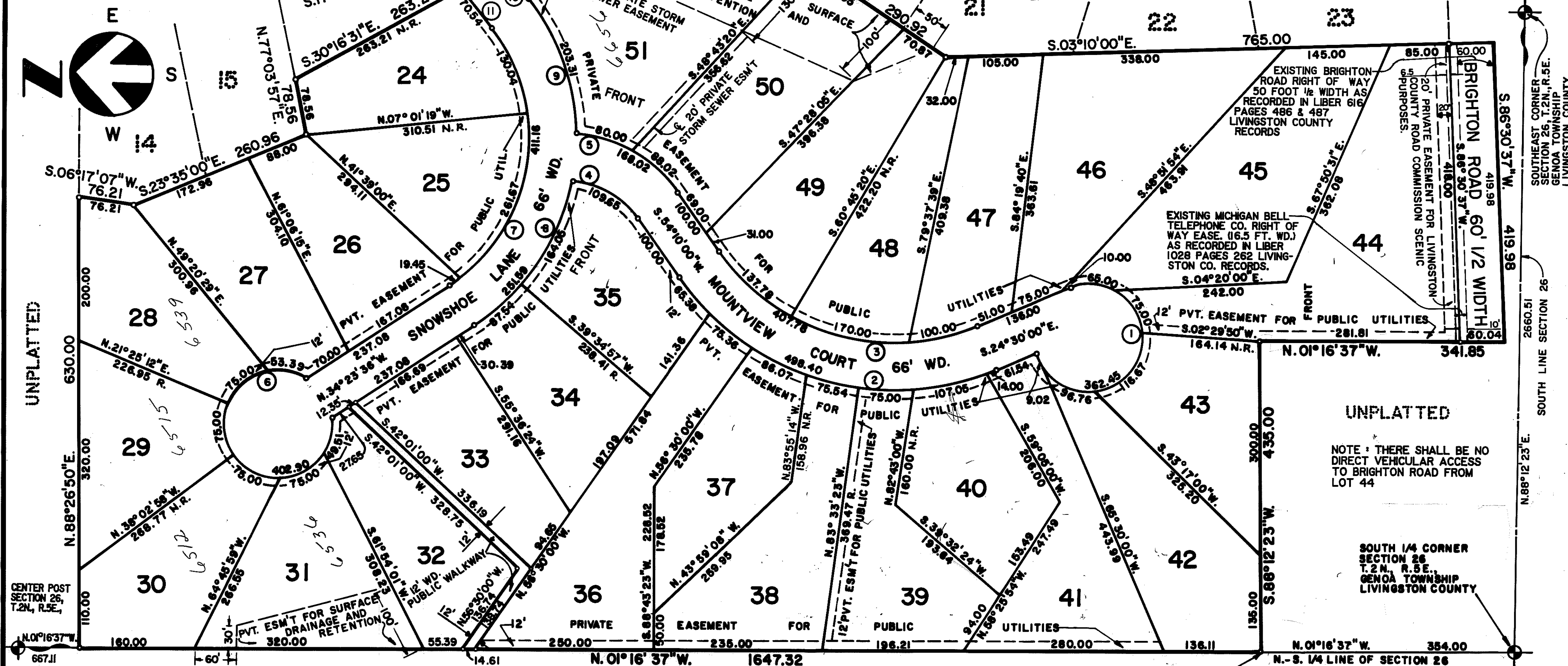
THIS PLAT IS SUBJECT TO RESTRICTIONS AS REQUIRED BY ACT 288 OF 1967, AS AMENDED ON CERTAIN LOTS WITH RESPECT TO THE REQUIREMENTS OF THE MICHIGAN DEPARTMENT OF NATURAL RESOURCES AND/OR THE MICHIGAN DEPARTMENT OF PUBLIC HEALTH WHICH ARE RECORDED IN LIBER 1209 PAGE 317-318, OF RECORDS OF THE COUNTY.

## ROLLING MEADOWS SUBDIVISION

L.23 17 P. 49 18 50 19

### CURVE DATA

Curve	Radius	Arc	Central Angle	Chord Bearing	Chord Length
1.	75.00	362.45	276° 53' 32"	S. 66° 03' 14" E.	99.50
2.	363.00	498.40	78° 40' 00"	S. 14° 50' 00" W.	460.16
3.	297.00	407.78	78° 40' 00"	N. 14° 50' 00" E.	376.50
4.	124.00	109.65	50° 40' 00"	S. 28° 50' 00" W.	106.12
5.	190.00	168.02	50° 40' 00"	N. 28° 50' 00" E.	162.60
6.	75.00	402.90	307° 47' 32"	S. 55° 36' 24" W.	66.00
7.	247.00	411.16	95° 22' 33"	N. 82° 04' 53" W.	365.31
8.	313.00	251.59	46° 03' 17"	S. 57° 25' 14" E.	244.87
9.	313.00	203.31	37° 13' 02"	N. 68° 50' 22" E.	199.76
10.	5321.09	43.54	00° 28' 08"	N. 50° 27' 55" E.	43.55
11.	5387.09	70.54	00° 45' 01"	N. 50° 36' 22" E.	70.54



CENTER POST  
SECTION 26,  
T.2N., R.5E.

UNPLATTED

URBAN LAND CONSULTANTS  
CIVIL ENGINEERS-PLANNERS-LAND SURVEYORS  
8800 23 MILE ROAD, UTICA, MICHIGAN 48087

UNPLATTED

POINT OF BEGINNING

UNPLATTED

NOTE: THERE SHALL BE NO  
DIRECT VEHICULAR ACCESS  
TO BRIGHTON ROAD FROM  
LOT 44

SOUTH 1/4 CORNER  
SECTION 26,  
T.2N., R.5E.,  
GENOA TOWNSHIP,  
LIVINGSTON COUNTY

SOUTHEAST CORNER  
SECTION 26, T.2N., R.5E.,  
GENOA TOWNSHIP,  
LIVINGSTON COUNTY

SOUTH LINE SECTION 26