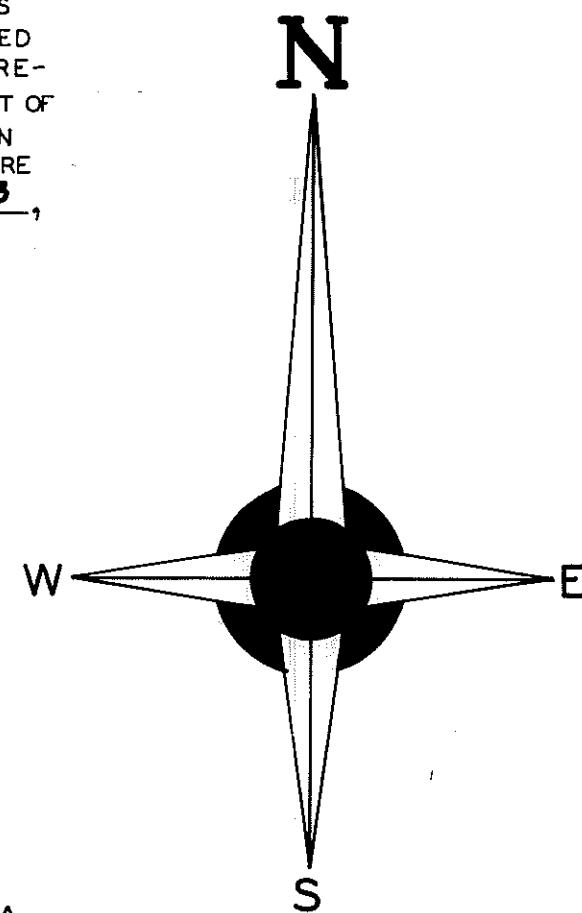
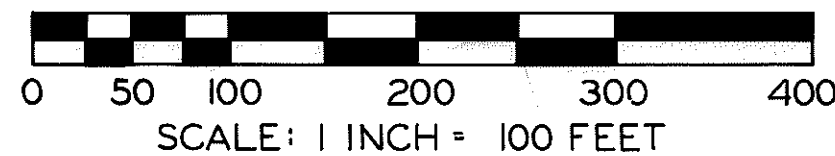


THIS PLAT IS SUBJECT TO RESTRICTIONS AS REQUIRED BY ACT 288 OF 1967, AS AMENDED ON CERTAIN LOTS WITH RESPECT TO THE REQUIREMENTS OF THE MICHIGAN DEPARTMENT OF NATURAL RESOURCES AND/OR THE MICHIGAN DEPARTMENT OF PUBLIC HEALTH, WHICH ARE RECORDED IN LIBER 713, PAGE 102-103, OF RECORDS OF THIS COUNTY.



RIDGEVIEW SUBDIVISION

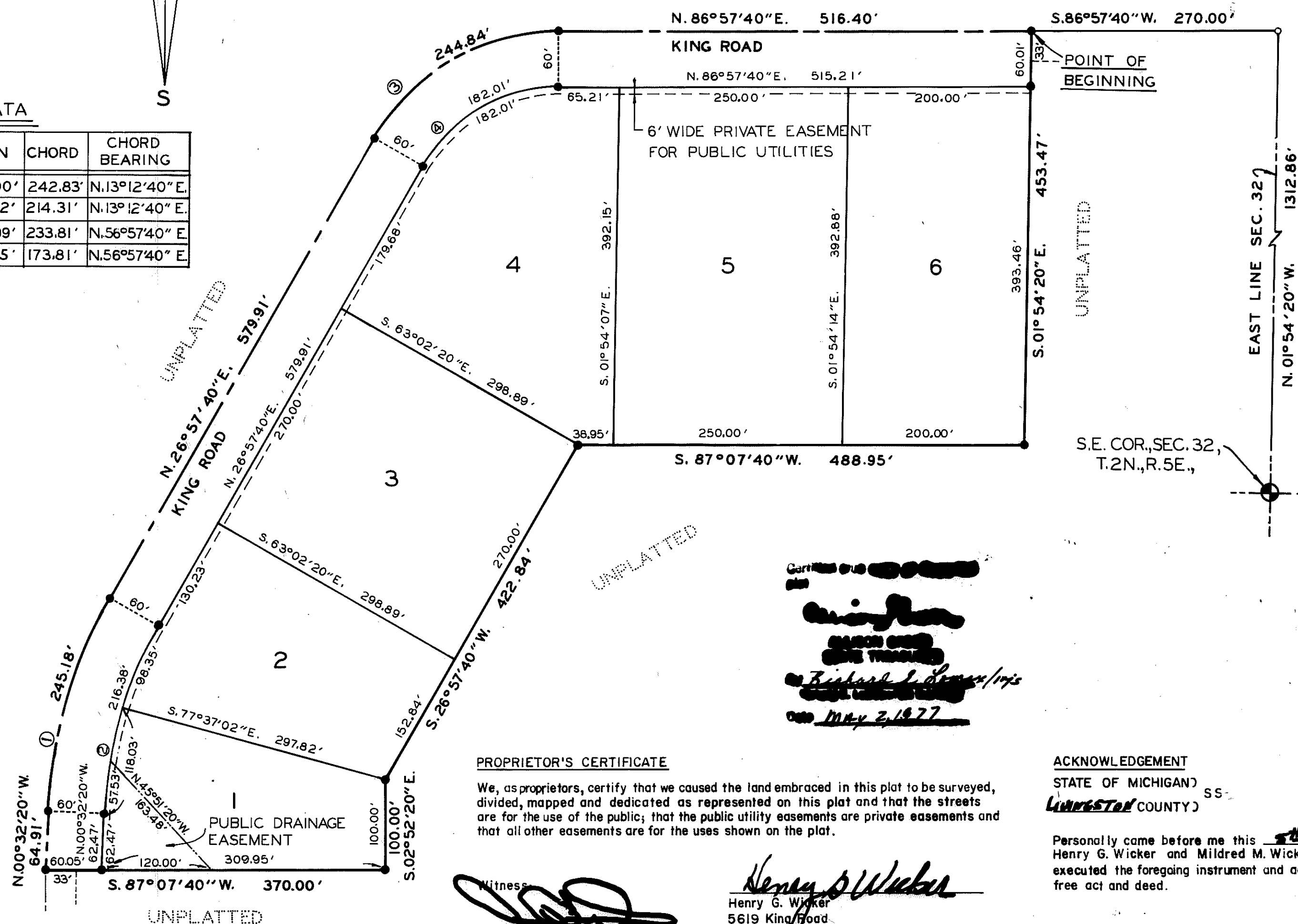
PART OF THE S.E. 1/4 OF SEC. 32
T.2N., R.5E., GENOA TOWNSHIP
LIVINGSTON COUNTY, MICHIGAN



UNPLATTED

CURVE DATA

No.	RADIUS	ARC	DELTA	TAN	CHORD	CHORD BEARING
1	510.83'	245.18'	27°30'00"	125.00'	242.83'	N.13°12'40"E.
2	450.83'	216.38'	27°30'00"	110.32'	214.31'	N.13°12'40"E.
3	233.81'	244.84'	60°00'00"	134.99'	233.81'	N.56°57'40"E.
4	173.81'	182.01'	60°00'00"	100.35'	173.81'	N.56°57'40"E.



PROPRIETOR'S CERTIFICATE

We, as proprietors, certify that we caused the land embraced in this plat to be surveyed, divided, mapped and dedicated as represented on this plat and that the streets are for the use of the public; that the public utility easements are private easements and that all other easements are for the uses shown on the plat.

Witness:

JAMES D. WINES

ELEANOR WINES

Henry G. Wicker
5619 King Road
Howell, Michigan 48843

Mildred M. Wicker
5619 King Road
Howell, Michigan 48843

ACKNOWLEDGEMENT

STATE OF MICHIGAN) SS:
LIVINGSTON COUNTY)

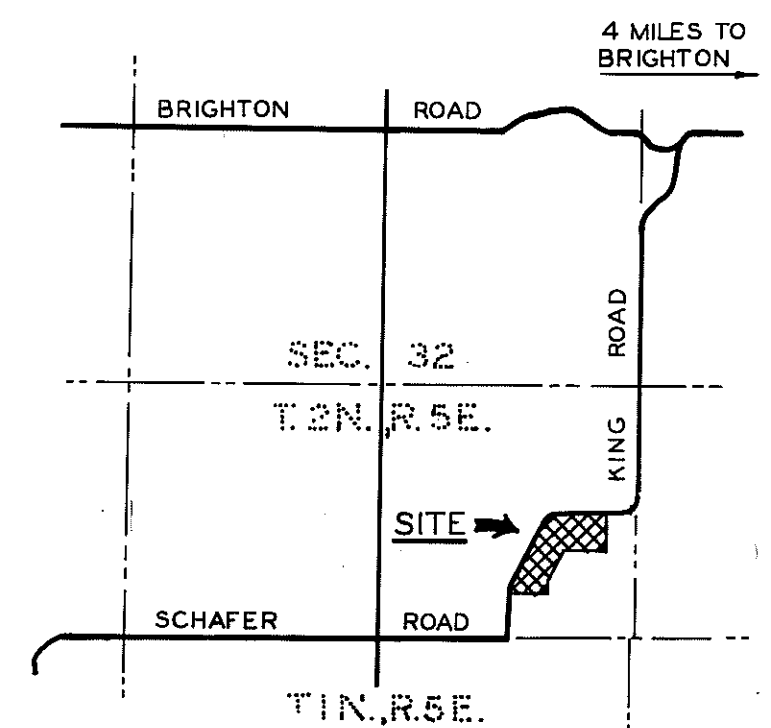
Personally came before me this 15th day of NOVEMBER, 1976, the above named Henry G. Wicker and Mildred M. Wicker, his wife, to me known to be the persons who executed the foregoing instrument and acknowledged that they executed the same as their free act and deed.

My commission expires: Nov. 15, 1978

Notary Public

Oakland County, Michigan
ACTING IN LIVINGSTON COUNTY

SHEET 1 OF 2



LOCATION MAP
SCALE: 1" = 2000'

LEGEND

1. ALL DIMENSIONS ARE IN FEET.
2. ALL CURVE DIMENSIONS ARE ARCS.
3. BEARINGS ARE BASED ON TRUE NORTH BY OBSERVATION OF POLARIS. (5-22-74).
4. CONCRETE MONUMENTS HAVE BEEN PLACED AT ALL POINTS MARKED -•-.
5. LOT CORNERS HAVE BEEN MARKED WITH 1/2" x 18" LENGTHS OF STEEL ROD.



RIDGEVIEW