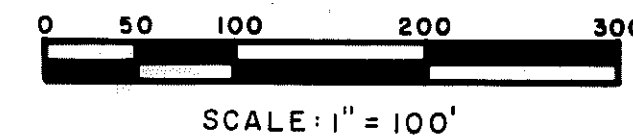


RED OAKS OF CHEMUNG NO. 10

A SUBDIVISION OF PART OF THE S. 1/2 OF SEC. 3
T.2N., R.5E., GENOA TOWNSHIP
LIVINGSTON CO. MICHIGAN



PLAT LEGEND

ALL DIMENSIONS ARE SHOWN IN FEET.

ALL CURVILINEAR DIMENSIONS ARE SHOWN
ALONG THE ARC.

RADIAL LINES SHOWN THUS "R"

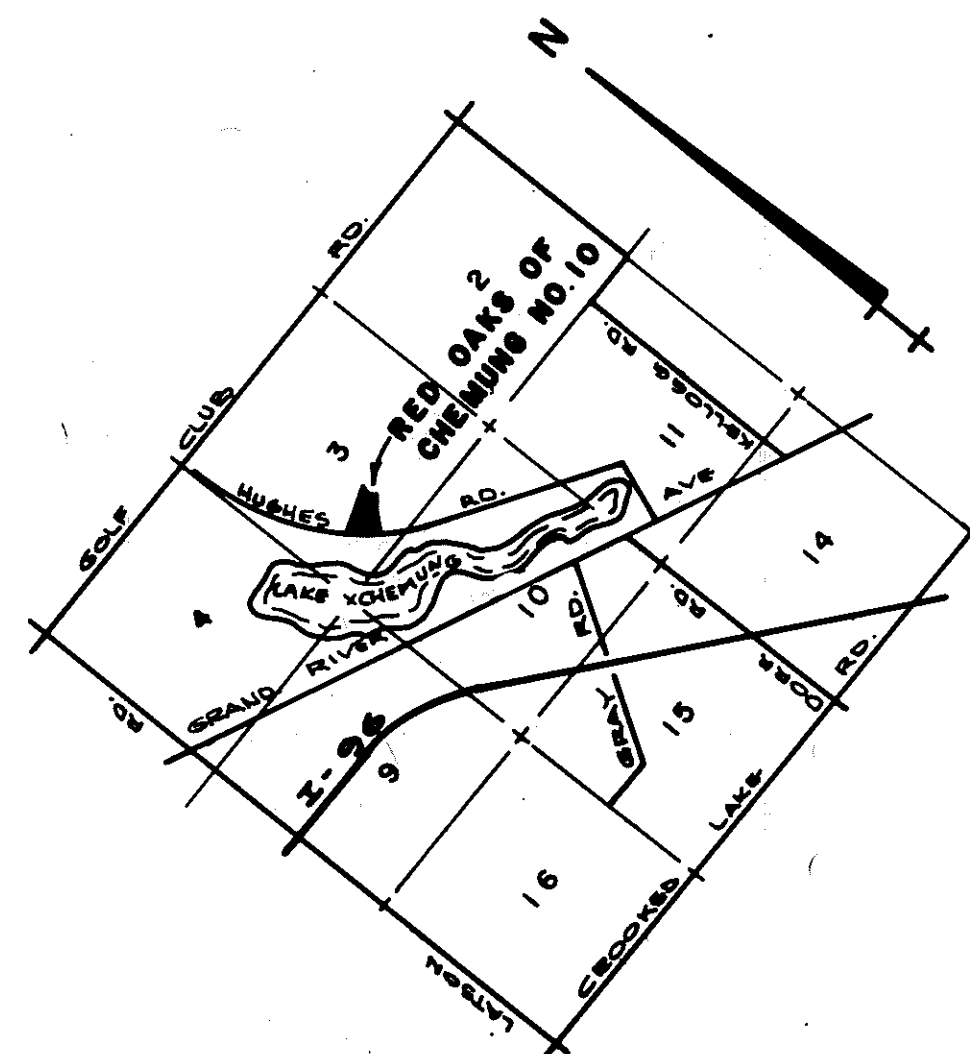
THE SYMBOL "O" INDICATES A CONCRETE
MONUMENT.

ALL LOT MARKERS ARE 1/2" IRON PIPES
AND ARE 18" LONG.

ALL BEARINGS ARE RELATED TO THE
BEARINGS OF THE SOUTHWESTLY LINE OF
RED OAKS OF CHEMUNG NO. 4, LIBER 14,
PAGES 41-42, LIVINGSTON COUNTY RECORDS.

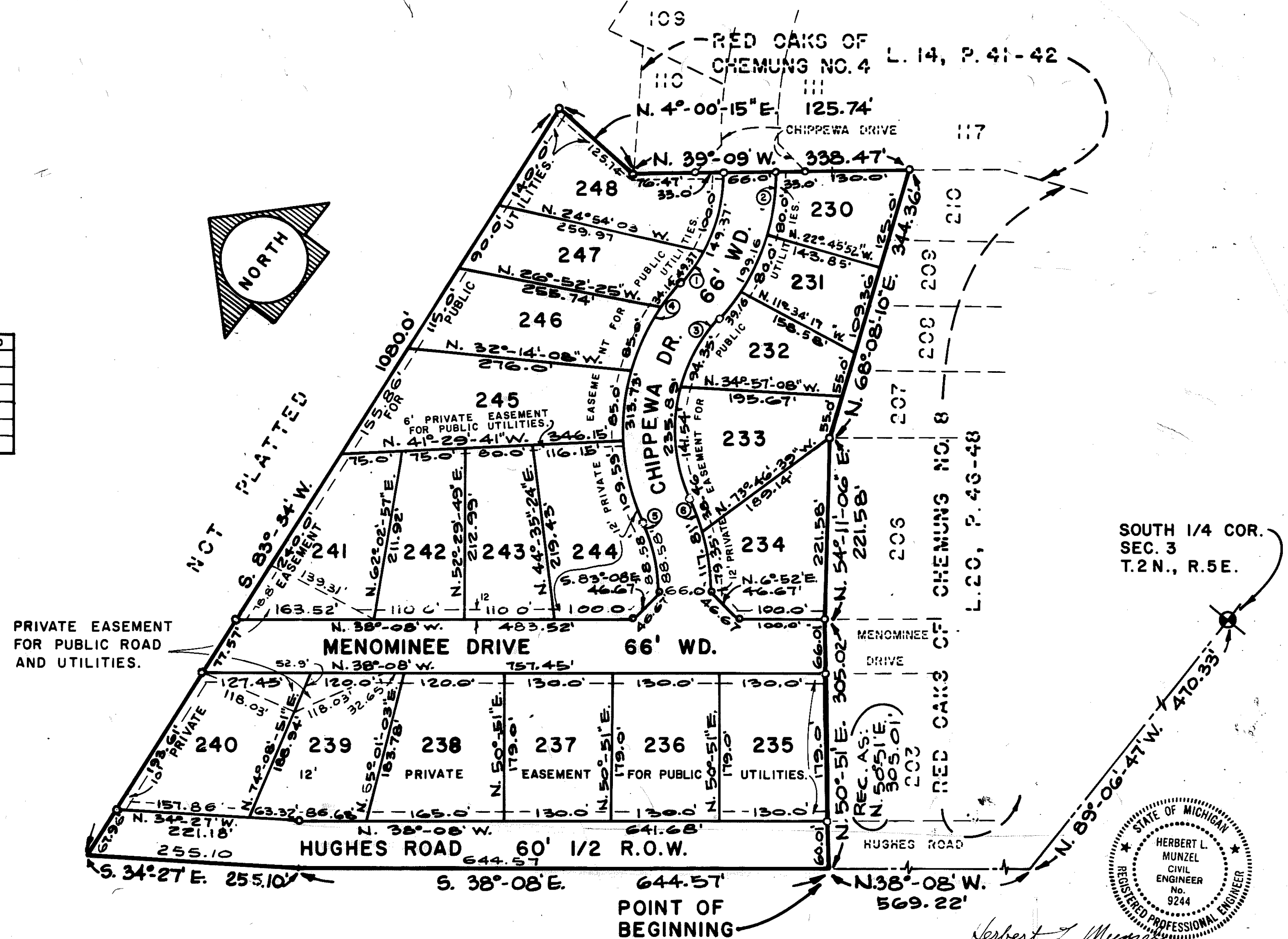
CURVE DATA

NO.	ARC	CENTRAL ANGLE	RADIUS	CHORD BEARING	CHORD
1	149.37	43°04'26"	198.69	N.72°31'57" E.	145.89
2	199.16	43°06'38"	264.69	N.72°30'51" E.	194.50
3	235.89	67°34'41"	200.00	N.60°16'48" E.	222.45
4	313.73	67°34'41"	266.00	N.60°16'48" E.	295.86
5	88.58	25°22'31"	200.00	N.39°10'45" E.	87.85
6	117.81	25°22'31"	266.00	N.39°10'45" E.	116.84



LOCATION SKETCH

NO SCALE



Herbert L. Munzel

PREPARED AND DRAFTED BY:

HERBERT L. MUNZEL, P.E. AND R.L.S.
222 W. GRAND RIVER AVENUE
BRIGHTON, MICHIGAN 48116