

PLAT LEGEND

ALL DIMENSIONS ARE SHOWN IN FEET.

ALL CURVILINEAR DIMENSIONS ARE SHOWN ALONG THE ARC.

THE SYMBOL "O" INDICATES A CONCRETE MONUMENT

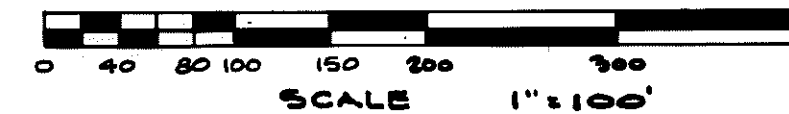
ALL LOT MARKERS ARE 1/2" IRON PIPES OR RODS AND ARE 18" LONG

ALL BEARINGS ARE RELATED TO THE BEARING OF THE NORTH LINE OF RED OAKS OF CHEMUNG NO. 6, RECORDED IN LIBER 6 OF PLATS, PAGES 19 & 20, LIVINGSTON COUNTY RECORDS.

RED OAKS OF CHEMUNG NO. 9

A SUBDIVISION OF A PART OF THE E. 1/2 OF SEC. 3

T. 2 N., R. 5 E., GENOA TOWNSHIP
LIVINGSTON CO., MICHIGAN



SURVEYOR'S CERTIFICATE

I, HERBERT L. MUNZEL SURVEYOR,
CERTIFY:
THAT I HAVE SURVEYED, DIVIDED,
MAPPED THE LAND SHOWN ON THIS
PLAT, DESCRIBED AS;

RED OAKS OF CHEMUNG NO. 9, A SUBDIVISION OF A PART OF THE E. 1/2 OF SEC. 3, T. 2 N., R. 5 E., GENOA TOWNSHIP, LIVINGSTON CO., MICHIGAN,

BEGINNING AT A POINT DISTANT S. 1°-10' W. 1336.69 FT., S. 1°-49'-38" W. 1046.23 FT., AND S. 88°-24' E. 498.06 FT. ALONG THE NORTH LINE OF RED OAKS OF CHEMUNG NO. 7, (AS RECORDED IN LIBER 20 OF PLATS, PAGES 36-7-8, LIVINGSTON CO. RECORDS), FROM THE N. 1/4 CORNER OF SAID SEC. 3; THENCE S. 1°-36' W. 386.0' FT.; THENCE FOLLOWING 3 COURSES ALONG THE N. LINE OF RED OAKS OF CHEMUNG NO. 6 (L. 6, P. 19 & 20 - LIVINGSTON CO. RECORDS), S. 88°-24' E., 580.0 FT., S. 58°-28'-06" E. 76.18 FT., AND S. 88°-24' E., 173.20 FT., THENCE N. 1°-17'-42" E., 280.0 FT.; THENCE N. 73°-44'-09" W., 92.82 FT.; THENCE N. 19°-22'-45" E., 176.15 FT.; THENCE N. 53°-24' W., 267.0 FT.; THENCE S. 32°-01'-27" W., 135.29 FT.; THENCE N. 88°-24' W., 480.0 FT. TO THE POINT OF BEGINNING, CONTAINING 7.52 ACRES, MORE OR LESS, & COMPRISING 19 LOTS.

THAT I HAVE MADE SUCH SURVEY, LAND DIVISION AND PLAT BY THE DIRECTION OF THE OWNERS OF SUCH LAND.

THAT SUCH PLAT IS A CORRECT REPRESENTATION OF ALL THE EXTERIOR BOUNDARIES OF THE LAND SURVEYED AND THE SUBDIVISION OF IT.

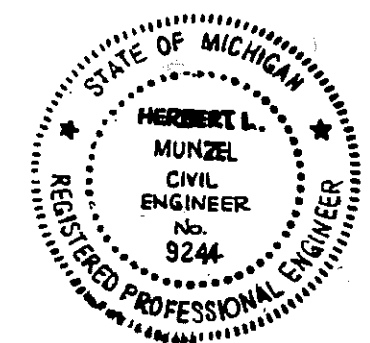
THAT THE REQUIRED MONUMENTS AND LOT MARKERS HAVE BEEN PLACED IN THE GROUND AS REQUIRED BY SEC. 125 OF THE ACT.

THAT THE ACCURACY OF SURVEY IS WITHIN THE LIMITS REQUIRED BY SEC. 126 OF THE ACT.

THAT THE BEARINGS SHOWN ON THE PLAT ARE EXPRESSED AS REQUIRED BY SEC. 126 (3) OF THE ACT, AS EXPLAINED IN THE LEGEND.

DATE: Aug. 4, 1978

Herbert L. Munzel
HERBERT L. MUNZEL, P.E. # 9244
PROFESSIONAL ENGINEER
222 W. GRAND RIVER AVE.
BRIGHTON, MICHIGAN 48116



PREPARED AND DRAFTED BY:
HERBERT L. MUNZEL
REG. PROFESSIONAL ENGINEER #9244
222 W. GRAND RIVER
BRIGHTON, MICH. 48116

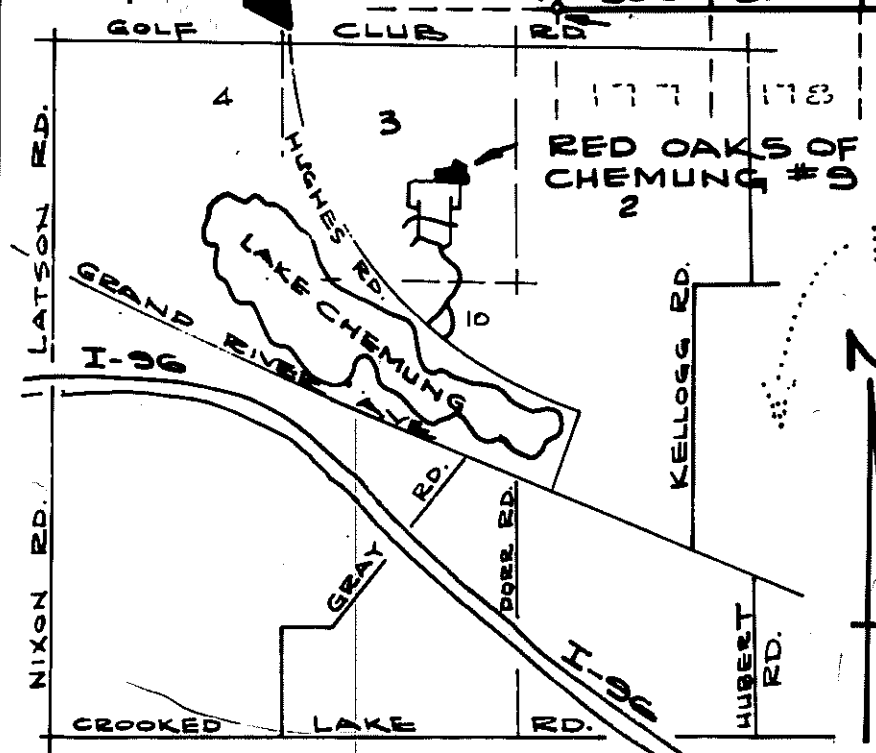
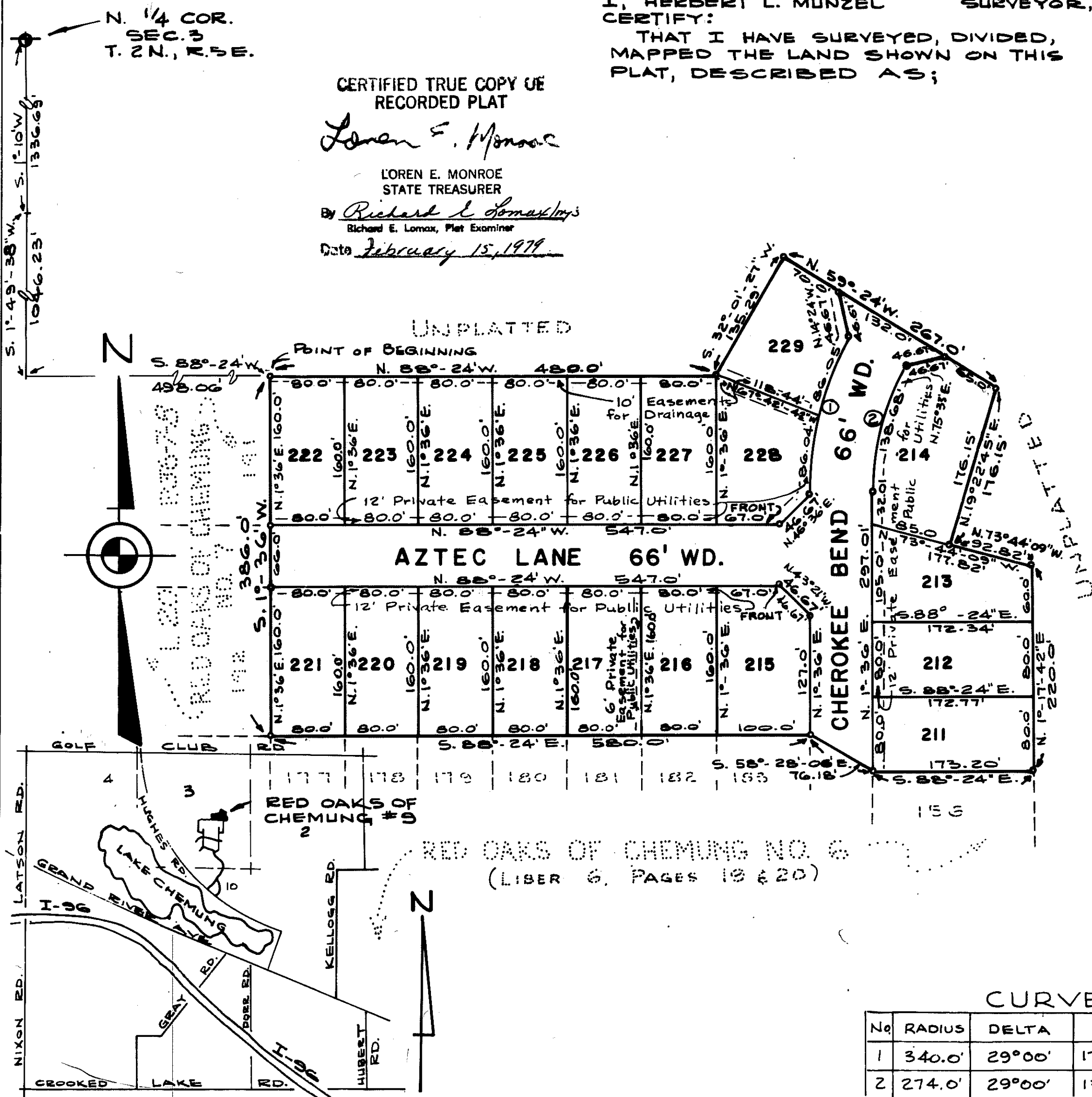
CERTIFIED TRUE COPY OF
RECORDED PLAT

Loren E. Monroe

LOREN E. MONROE
STATE TREASURER

By *Richard E. Lomax*
Richard E. Lomax, Plat Examiner

Date February 15, 1979



LOCATION SKETCH

RED OAKS OF CHEMUNG NO. 6
(LIBER 6, PAGES 19 & 20)

CURVE DATA

No	RADIUS	DELTA	ARC	CHORD BEARING	CHORD
1	340.0'	29°00'	172.09'	N. 16°06' E.	170.26'
2	274.0'	29°00'	138.68'	N. 16°06' E.	137.21'