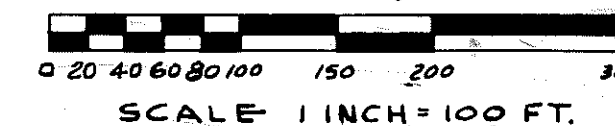


RED OAKS OF CHEMUNG

NO. 7

A SUBDIVISION OF A PART OF THE E. 1/2 SEC. 3
T.2 N., R.5 E., GENOA TOWNSHIP
LIVINGSTON CO., MICHIGAN



N. 1/4 COR.
SEC. 3
T. 2 N., R. 5 E.

PLAT LEGEND

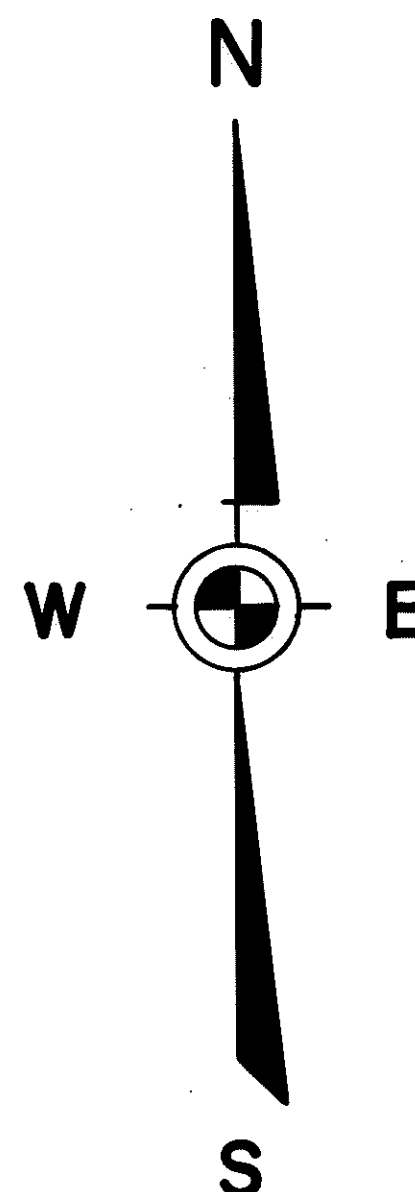
ALL DIMENSIONS ARE SHOWN IN FEET.

THE SYMBOL "O" INDICATES A
CONCRETE MONUMENT.

ALL LOT MARKERS ARE 1/2" IRON
RODS AND ARE 18" LONG.

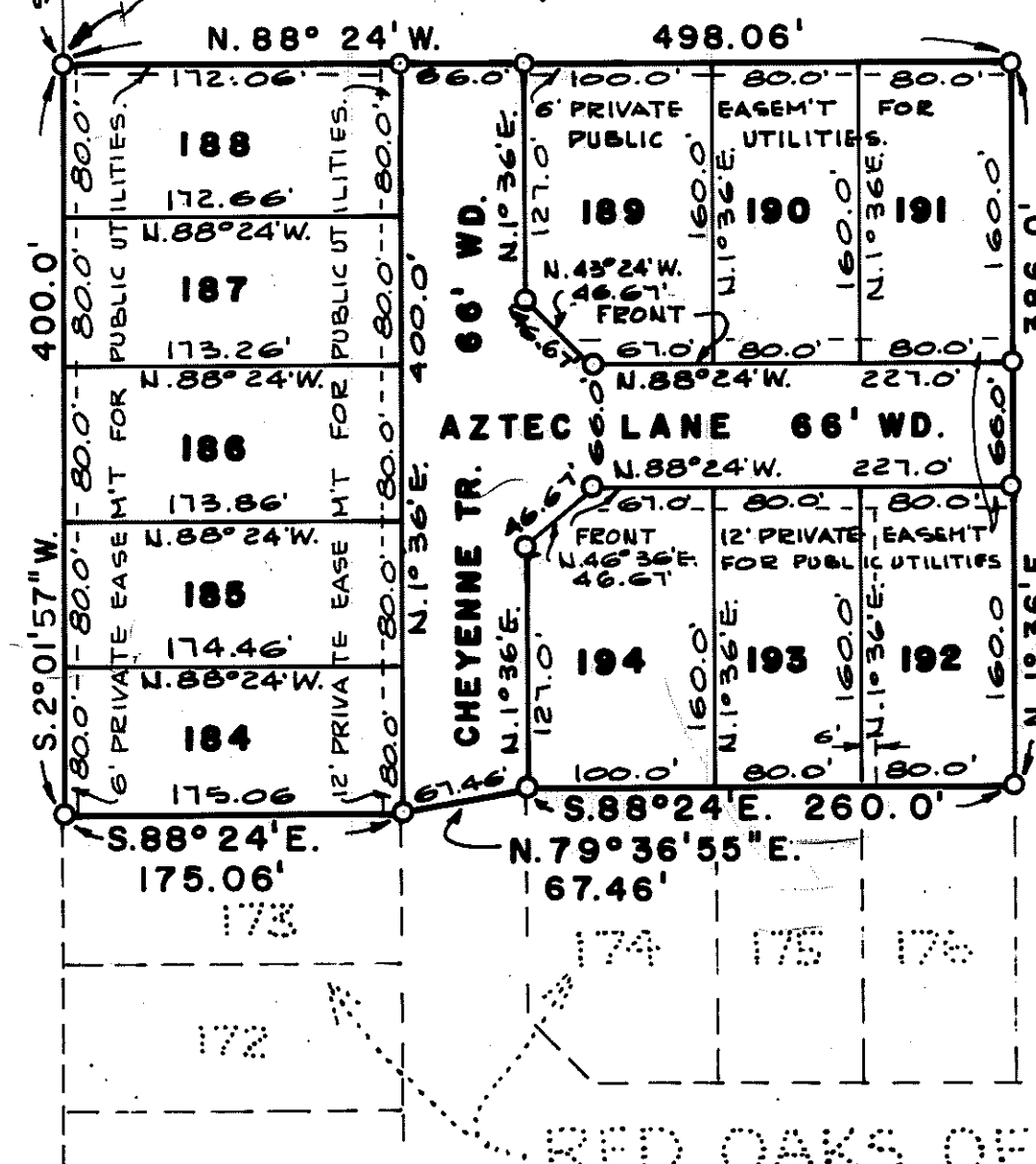
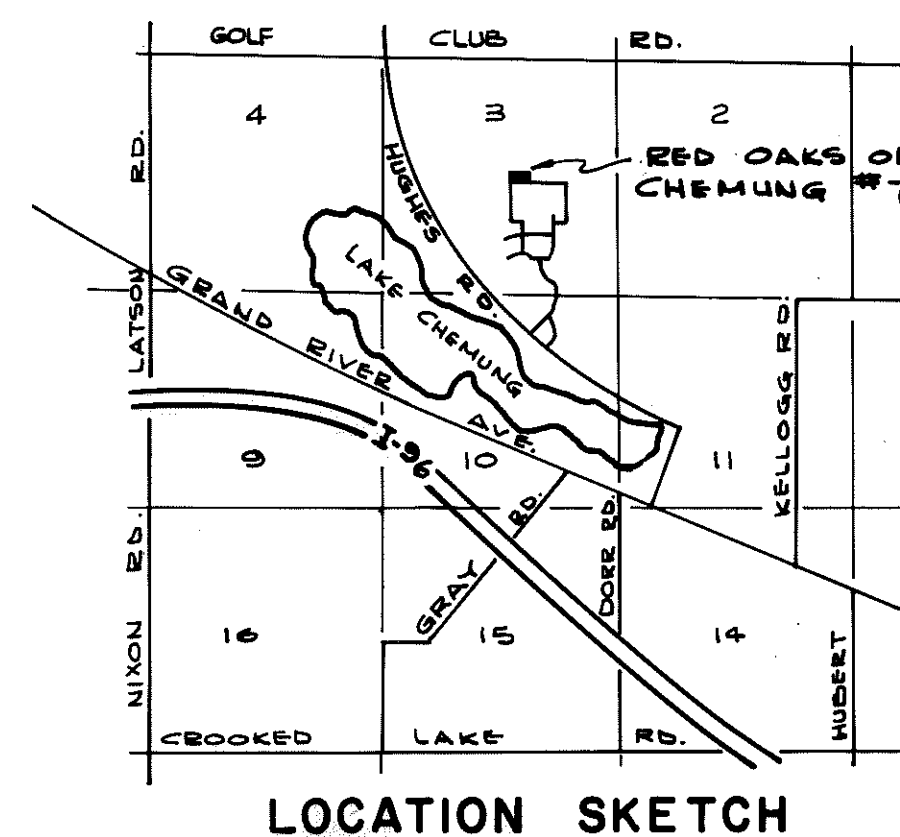
ALL BEARINGS ARE RELATED TO THE BEARINGS OF THE N'LY LINE OF RED OAKS OF CHEMUNG NO. 6 SUB'N. LIBER 16, PAGES 19-20, LIVINGSTON COUNTY RECORDS.

ALL CURVILINEAR DIMENSIONS ARE SHOWN ALONG THE ARC.



CERTIFIED TRUE COPY OF
RECORDED PLAT

Loren E. Monroe
LOREN E. MONROE
STATE TREASURER
By *Richard E. Lomax*
Richard E. Lomax, Plat Examiner
Date *February 12, 1979*



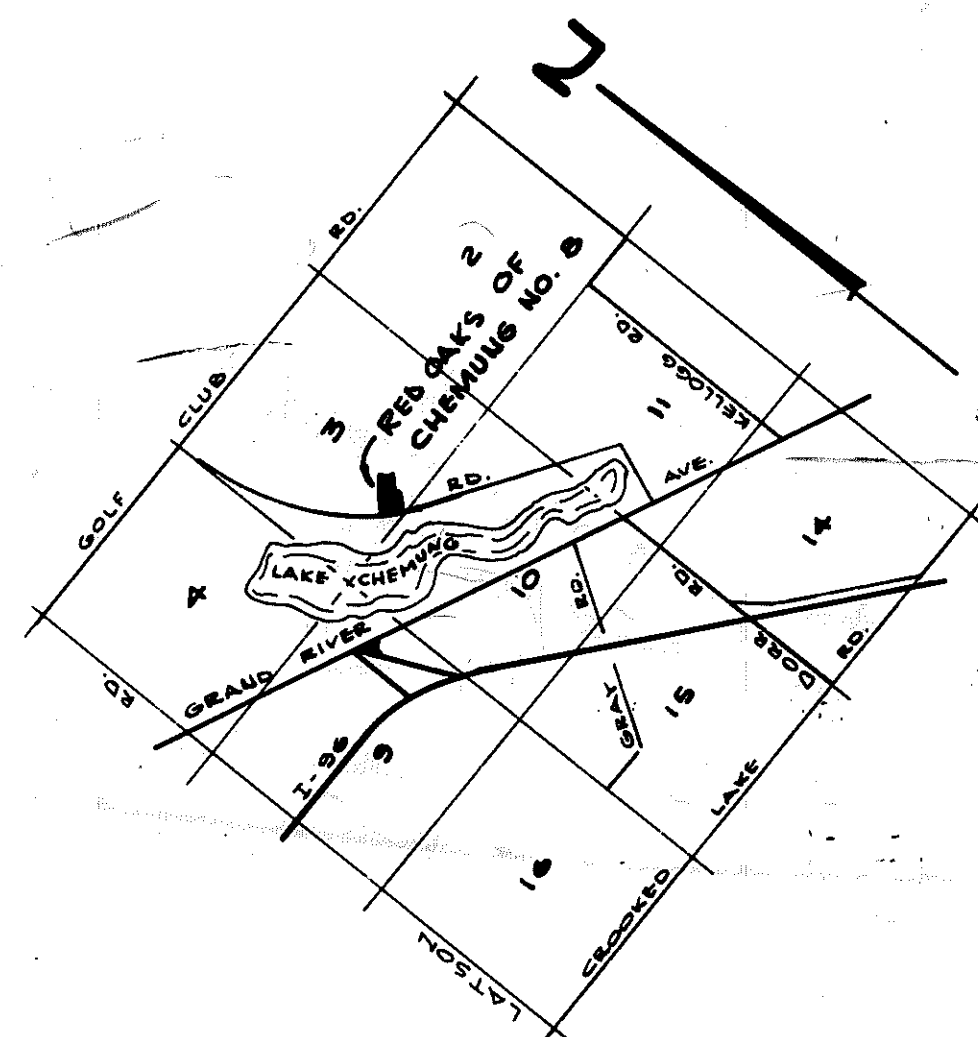
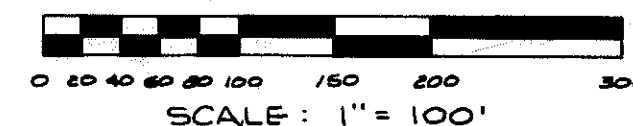
A circular professional engineer seal for the State of Michigan. The outer ring contains the text "STATE OF MICHIGAN" at the top and "REGISTERED PROFESSIONAL ENGINEER" at the bottom, separated by two stars. The center of the seal contains the text: "HERBERT L. MUNZEL", "CIVIL ENGINEER", and "No. 9244".

PREPARED AND DRAFTED BY
HERBERT L. MUNZEL
REG. PROF. ENGINEER #9244
222 W. GRAND RIVER
BRIGHTON, MICHIGAN - 48116

RED OAKS OF CHEMUNG NO. 8

A SUBDIVISION OF A PART OF THE S. 1/2
OF SEC. 3

T. 2 N., R. 5 E., GENOA TOWNSHIP
LIVINGSTON CO., MICHIGAN



LOCATION SKETCH

PLAT LEGEND

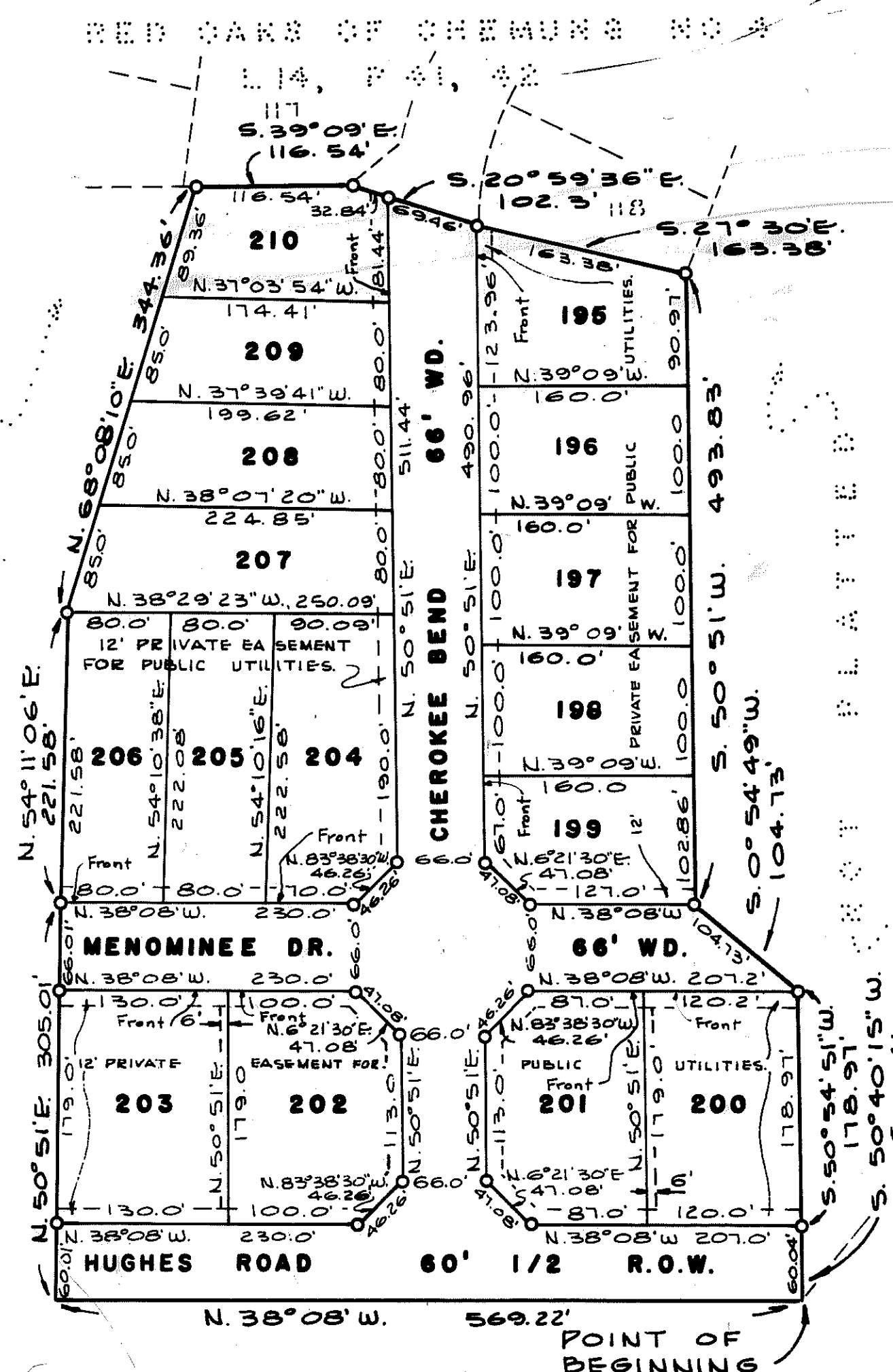
ALL DIMENSIONS ARE SHOWN IN FEET.

ALL CURVILINEAR DIMENSIONS ARE SHOWN
ALONG THE ARC.

THE SYMBOL "O" INDICATES A CONCRETE
MONUMENT.

ALL LOT MARKERS ARE 1/2" IRON PIPES
AND ARE 18" LONG.

ALL BEARINGS ARE RELATED TO THE BEAR-
INGS OF THE SOUTHWESTERLY LINE OF RED
OAKS OF CHEMUNG NO. 4, LIBER 14, PAGES
41-42; LIVINGSTON COUNTY RECORDS.



CERTIFIED TRUE COPY OF
RECORDED PLAT

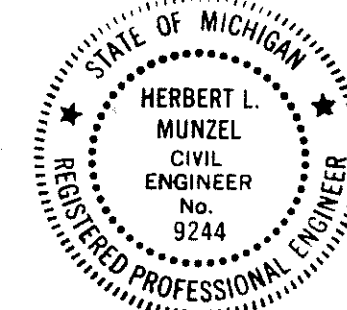
Loren E. Monroe

LOREN E. MONROE
STATE TREASURER

By *Richard E. Lomax*
Richard E. Lomax, Plat Examiner

Date *February 15, 1979*

S. 1/4 CORNER
SEC. 3
T. 2 N., R. 5 E.



PREPARED AND DRAFTED BY
HERBERT L. MUNZEL
REG. PROFESSIONAL ENG., NO. 9244
222 W. GRAND RIVER
BRIGHTON, MICHIGAN 48116