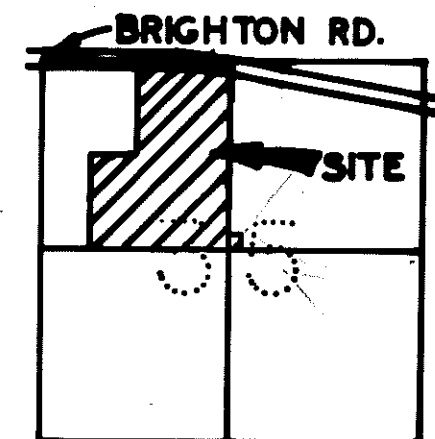
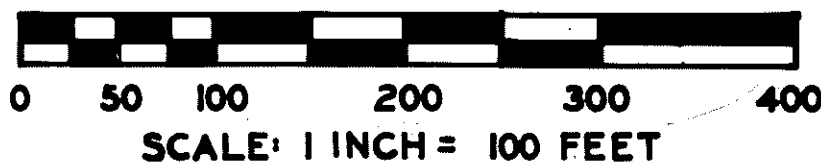


"PRAIRIE VIEW HILLS"

PART OF THE N. 1/2 OF SECTION 35
T.2N., R.5E., GENOA TOWNSHIP
LIVINGSTON CO. MICHIGAN



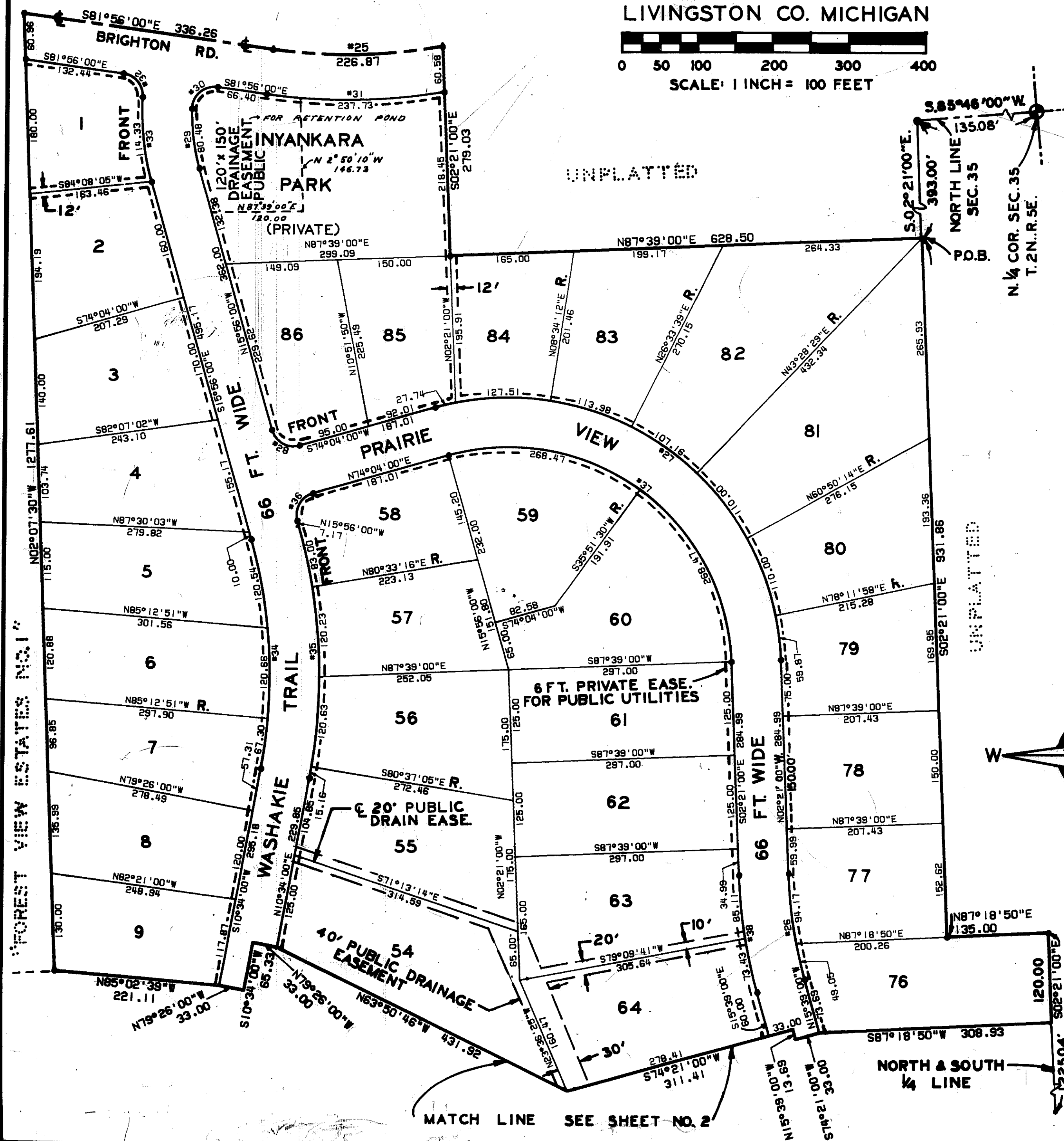
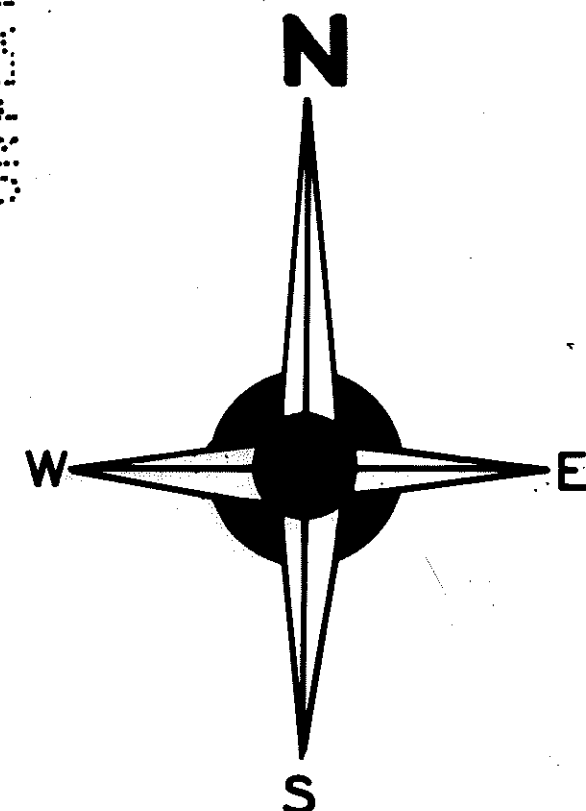
LOCATION MAP
NO SCALE

CURVE DATA

NUMBER	RADIUS	DELTA	ARC	CHORD BRNG	CHORD
1	30.00	090°00'00"	47.12	N42°03'00.0"E	42.43
2	493.00	086°29'00"	744.14	N43°48'30.0"E	675.49
3	30.00	090°00'00"	47.12	N45°34'00.0"E	42.43
4	226.83	059°00'00"	233.58	S59°56'00.0"E	223.39
5	303.00	041°13'39"	218.03	S51°02'49.5"E	213.35
6	30.00	090°00'00"	47.12	N26°39'39.0"W	42.43
7	598.00	020°41'21"	215.93	N07°58'40.5"E	214.76
8	683.00	013°18'00"	158.54	N09°00'00.0"W	158.19
9	617.00	013°18'00"	143.22	S09°00'00.0"E	142.90
10	532.00	020°41'21"	192.10	S07°58'40.5"W	191.06
11	30.00	093°11'26"	48.79	S84°56'08.0"W	43.69
12	237.00	038°02'13"	157.34	N49°27'06.5"W	154.46
13	292.83	059°00'00"	301.54	N58°58'00.0"W	288.38
14	30.00	090°00'00"	47.12	N44°26'00.0"W	42.43
15	767.00	010°00'00"	133.87	N05°34'00.0"E	133.70
16	833.00	010°00'00"	145.39	S05°34'00.0"W	145.20
17	30.00	090°00'00"	47.12	S45°34'00.0"W	42.43
18	420.85	022°26'00"	164.78	N78°13'00.0"W	163.73
19	263.00	115°57'00"	532.24	S55°01'30.0"W	445.95
20	30.00	090°00'00"	47.12	N47°57'00.0"W	42.43
21	197.00	115°57'00"	398.67	N55°01'30.0"E	334.04
22	486.85	022°26'00"	190.62	S78°13'00.0"E	188.40
23	30.00	090°00'00"	47.12	S44°26'00.0"E	42.43
24	427.00	086°29'00"	644.52	S43°48'30.0"W	585.06
25	696.70	018°39'27"	226.87	N88°44'17.0"E	225.87
26	617.00	013°18'00"	143.22	N09°00'00.0"W	142.80
27	363.00	103°35'00"	656.26	N54°08'30.0"W	670.47
28	30.00	090°00'00"	47.12	N60°56'00.0"W	42.43
29	272.80	016°54'09"	80.48	N07°28'55.5"W	80.19
30	30.00	097°05'51"	50.84	N49°31'04.5"E	44.97
31	756.71	018°00'00"	237.73	N89°04'00.0"E	236.76
32	30.00	085°20'03"	44.68	S38°15'58.5"E	40.66
33	338.80	019°20'03"	114.33	S06°15'58.5"E	113.78
34	667.00	026°30'00"	308.50	S02°41'00.0"E	306.76
35	733.00	026°30'00"	339.02	N02°41'00.0"W	336.01
36	30.00	090°00'00"	47.12	N28°04'00.0"E	42.43
37	297.00	103°35'00"	536.94	S54°08'30.0"E	466.75
38	683.00	013°18'00"	158.54	S09°00'00.0"E	158.19

LEGEND

1. ALL DIMENSIONS ARE IN FEET.
2. ALL CURVE DIMENSIONS ARE ARCS.
3. CONCRETE MONUMENTS HAVE BEEN PLACED AT ALL POINTS MARKED "•".
4. LOT CORNERS HAVE BEEN MARKED WITH 1/2" x 18" LENGTHS OF STEEL ROD.
5. BEARINGS ARE RELATED TO THE ADJACENT PLAT OF "FOREST VIEW EST. NO.1" AS RECORDED IN LIBER 14, PAGES 7,8&9.
6. ===== INDICATES 6 FT. PRIVATE EASEMENT FOR PUBLIC UTILITIES.



MATCH LINE SEE SHEET NO. 2

