

# PINE CREEK RIDGE SUBDIVISION NO. 6

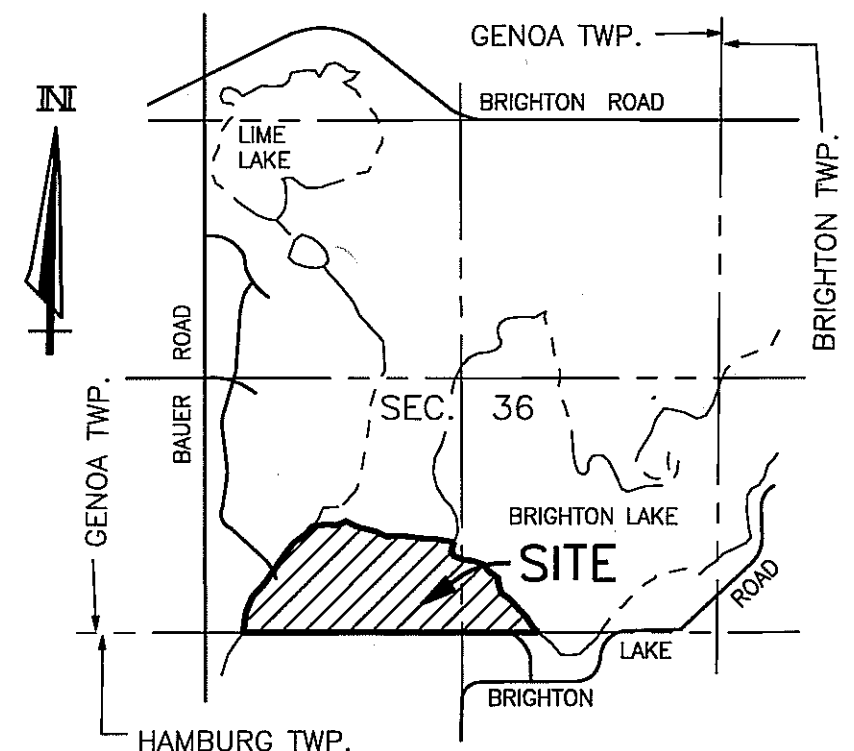
A PART OF THE SE. 1/4 AND SW. 1/4 OF SECTION 36, T-2-N, R-5-E,  
GENOA TOWNSHIP, LIVINGSTON COUNTY, MICHIGAN

LIBER PAGE  
SHEET 1 OF 9 SHEETS

SCALE 1" = 60'



CURVE DATA					
CURVE	ARC	RADIUS	CENTRAL ANGLE	CHORD	CHORD BEARING
1	9.88'	348.00'	01° 37' 34"	9.88'	N 65° 51' 58" W
2	162.93'	633.00'	14° 44' 52"	162.48'	N 74° 03' 11" W
3	28.23'	20.00'	80° 52' 21"	25.94'	N 40° 59' 27" W
4	31.82'	20.00'	91° 08' 39"	28.56'	N 43° 39' 11" E
5	15.42'	633.00'	01° 23' 45"	15.42'	N 88° 31' 38" E
6	387.51'	367.00'	60° 29' 51"	369.76'	N 32° 10' 04" W
7	467.51'	433.00'	61° 51' 44"	445.13'	N 31° 29' 08" W



LOCATION MAP

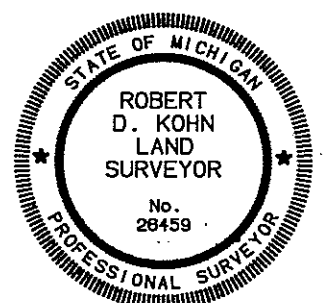
SCALE 1" = 2000'

## LEGEND

1. ALL DIMENSIONS ARE GIVEN IN FEET.
2. CURVILINEAR MEASUREMENTS ARE ARC DISTANCES.
3. THE SYMBOL "o" INDICATES A SET MONUMENT WHICH IS A ONE-HALF (1/2) INCH DIAMETER STEEL BAR THIRTY SIX (36) INCHES LONG, ENCASED IN CONCRETE FOUR (4) INCHES IN DIAMETER.
4. LOT CORNERS HAVE BEEN MARKED WITH STEEL BARS ONE-HALF (1/2) INCH IN DIAMETER, AND EIGHTEEN (18) INCHES IN LENGTH.
5. (R) INDICATES A RADIAL LINE.
6. (NR) INDICATES A NON RADIAL LINE.
7. L INDICATES A RIGHT ANGLE.
8. BEARINGS ARE IN RELATION TO THE TRUE MERIDIAN, AS DETERMINED BY POLARIS OBSERVATION, DATE 11/13/1984.
9. ■ DENOTES FOUND MONUMENT 1/2 INCH STEEL BAR ENCASED IN CONCRETE 4 INCHES IN DIAMETER.

THIS PLAT IS SUBJECT TO RESTRICTIONS AS REQUIRED BY ACT 288 OF 1967 AS AMENDED ON CERTAIN LOTS WITH RESPECT TO THE REQUIREMENTS OF THE MICHIGAN DEPARTMENT OF ENVIRONMENTAL QUALITY WHICH ARE RECORDED IN LIBER 2913, PAGES 0050 OF RECORDS OF THIS COUNTY.

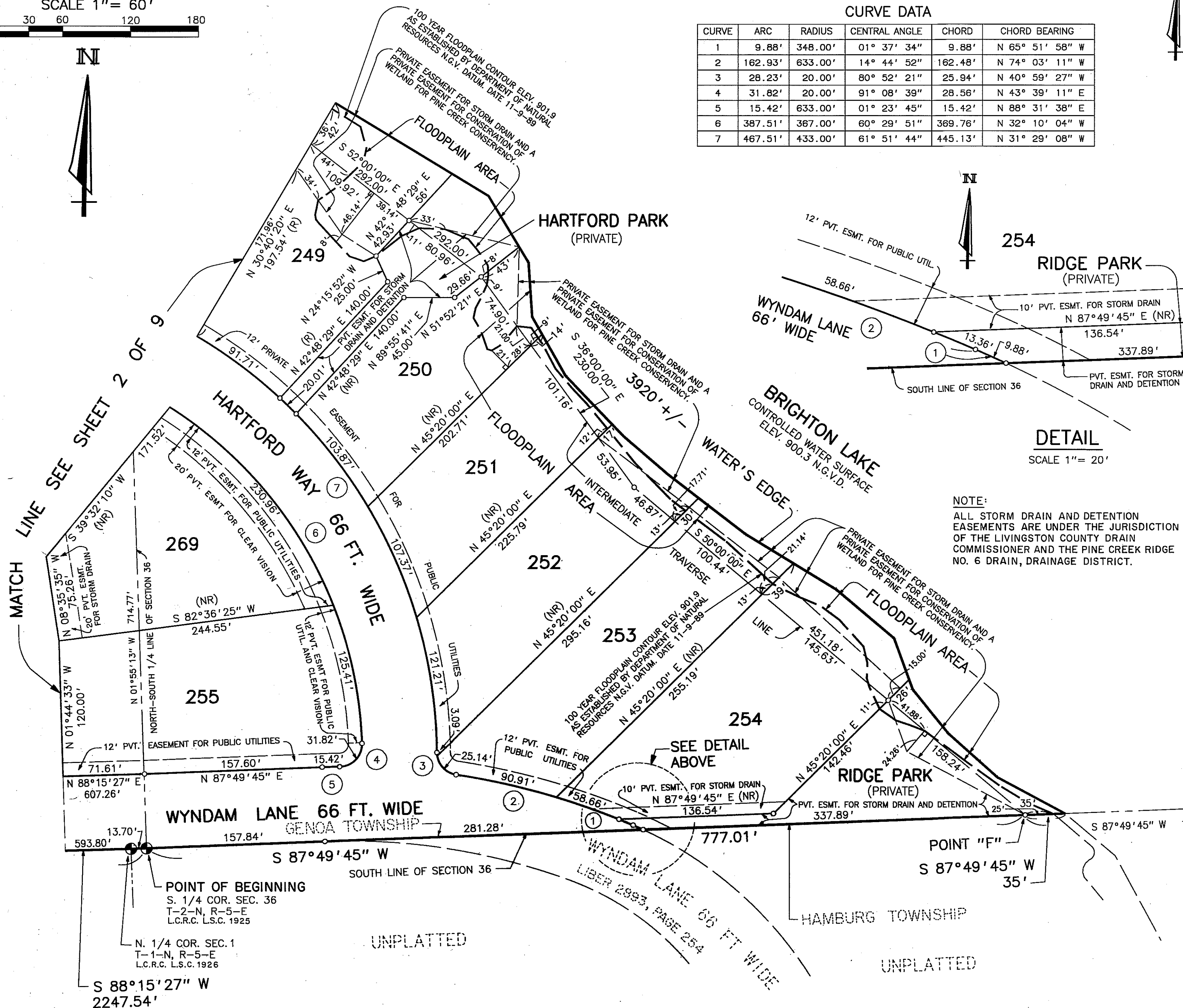
SE. COR. SEC. 36  
T-2-N, R-5-E  
L.C.R.C. L.S.C. 163 M



*Robert D. Kohn*

**Giffels-Webster Engineers Inc.**

ENGINEERS - SURVEYORS - PLANNERS  
2871 BOND STREET ROCHESTER HILLS MICHIGAN  
(248) 852-3100



# PINE CREEK RIDGE SUBDIVISION NO. 6

A PART OF THE SE. 1/4 AND SW. 1/4 OF SECTION 36, T-2-N, R-5-E,  
GENOA TOWNSHIP, LIVINGSTON COUNTY, MICHIGAN

LIBER PAGE  
SHEET 2 OF 9 SHEETS

SCALE 1" = 60'



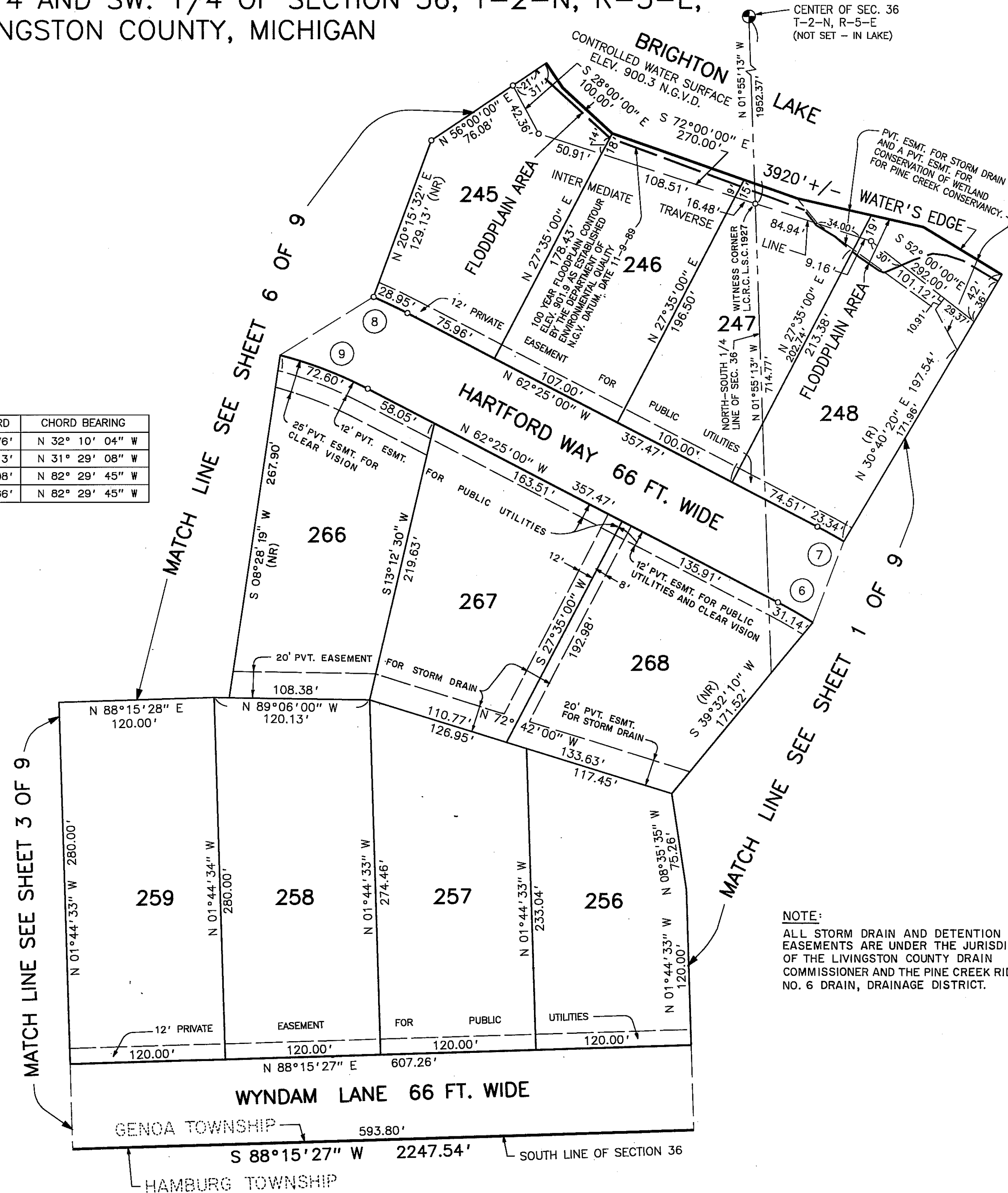
CURVE DATA

CURVE	ARC	RADIUS	CENTRAL ANGLE	CHORD	CHORD BEARING
6	387.51'	367.00'	60° 29' 51"	369.76'	N 32° 10' 04" W
7	467.51'	433.00'	61° 51' 44"	445.13'	N 31° 29' 08" W
8	268.44'	383.00'	40° 09' 30"	262.98'	N 82° 29' 45" W
9	222.18'	317.00'	40° 09' 30"	217.66'	N 82° 29' 45" W

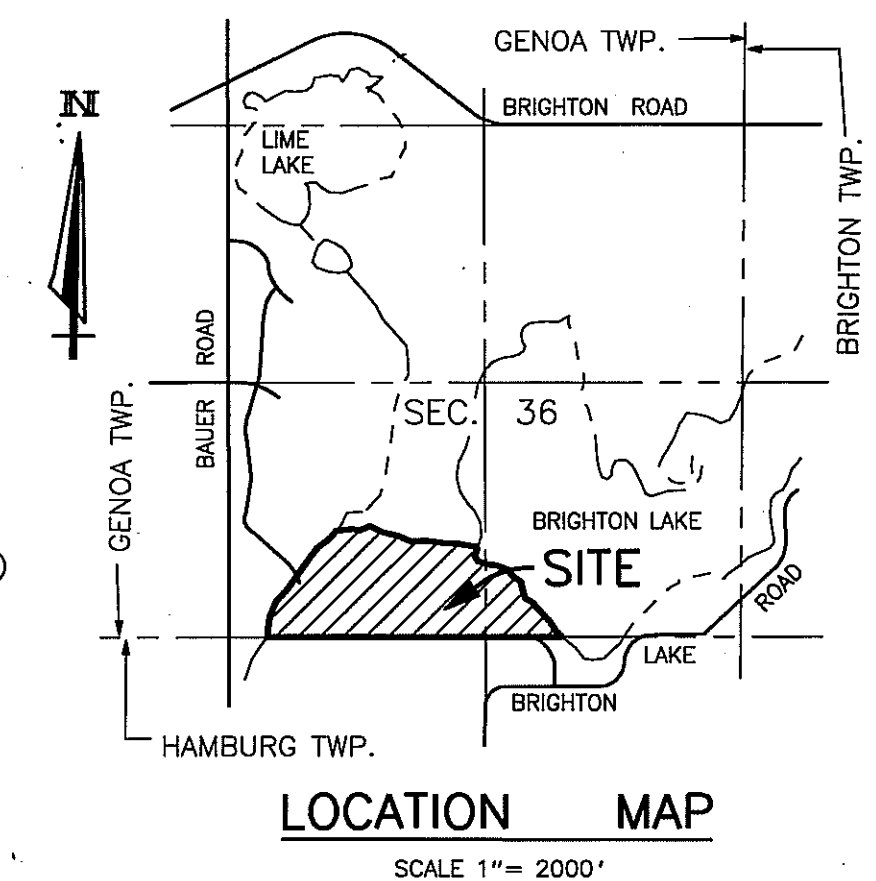
MATCH LINE SEE SHEET 3 OF 9

MATCH LINE SEE SHEET 6 OF 9

MATCH LINE SEE SHEET 1 OF 9



NOTE:  
ALL STORM DRAIN AND DETENTION  
EASEMENTS ARE UNDER THE JURISDICTION  
OF THE LIVINGSTON COUNTY DRAIN  
COMMISSIONER AND THE PINE CREEK RIDGE  
NO. 6 DRAIN, DRAINAGE DISTRICT.

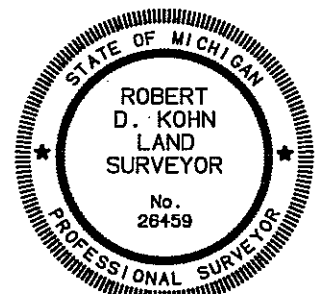


LOCATION MAP  
SCALE 1" = 2000'

## LEGEND

- ALL DIMENSIONS ARE GIVEN IN FEET.
- CURVILINEAR MEASUREMENTS ARE ARC DISTANCES.
- THE SYMBOL "o" INDICATES A SET MONUMENT WHICH IS A ONE-HALF (1/2) INCH DIAMETER STEEL BAR THIRTY SIX (36) INCHES LONG, ENCASED IN CONCRETE FOUR (4) INCHES IN DIAMETER.
- LOT CORNERS HAVE BEEN MARKED WITH STEEL BARS ONE-HALF (1/2) INCH IN DIAMETER, AND EIGHTEEN (18) INCHES IN LENGTH.
- (R) INDICATES A RADIAL LINE.
- (NR) INDICATES A NON RADIAL LINE.
- L INDICATES A RIGHT ANGLE.
- BEARINGS ARE IN RELATION TO THE TRUE MERIDIAN, AS DETERMINED BY POLARIS OBSERVATION, DATE 11/13/1984.
- DENOTES FOUND MONUMENT 1/2 INCH STEEL BAR ENCASED IN CONCRETE 4 INCHES IN DIAMETER.

THIS PLAT IS SUBJECT TO RESTRICTIONS AS  
REQUIRED BY ACT 288 OF 1967 AS AMENDED  
ON CERTAIN LOTS WITH RESPECT TO THE  
REQUIREMENTS OF THE MICHIGAN DEPARTMENT  
OF ENVIRONMENTAL QUALITY WHICH ARE  
RECORDED IN LIBER 2493, PAGES 0050  
OF RECORDS OF THIS COUNTY.



Robert D. Kohn

**Giffels-Webster Engineers Inc.**  
ENGINEERS - SURVEYORS - PLANNERS  
2871 BOND STREET ROCHESTER HILLS MICHIGAN  
(248) 852-3100

UNPLATTED

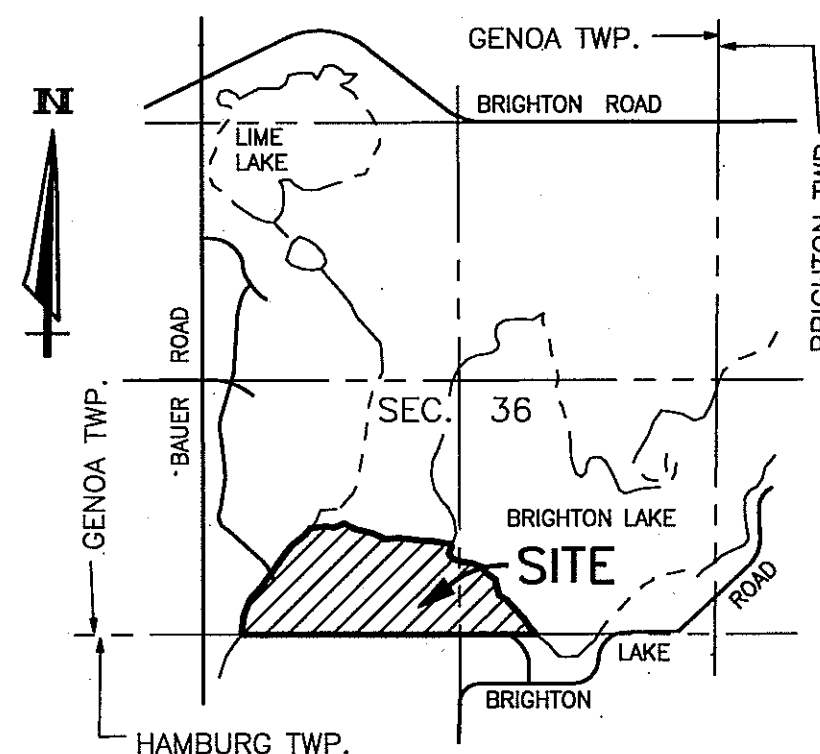
# PINE CREEK RIDGE SUBDIVISION NO. 6

A PART OF THE SE. 1/4 AND SW. 1/4 OF SECTION 36, T-2-N, R-5-E,  
GENOA TOWNSHIP, LIVINGSTON COUNTY, MICHIGAN

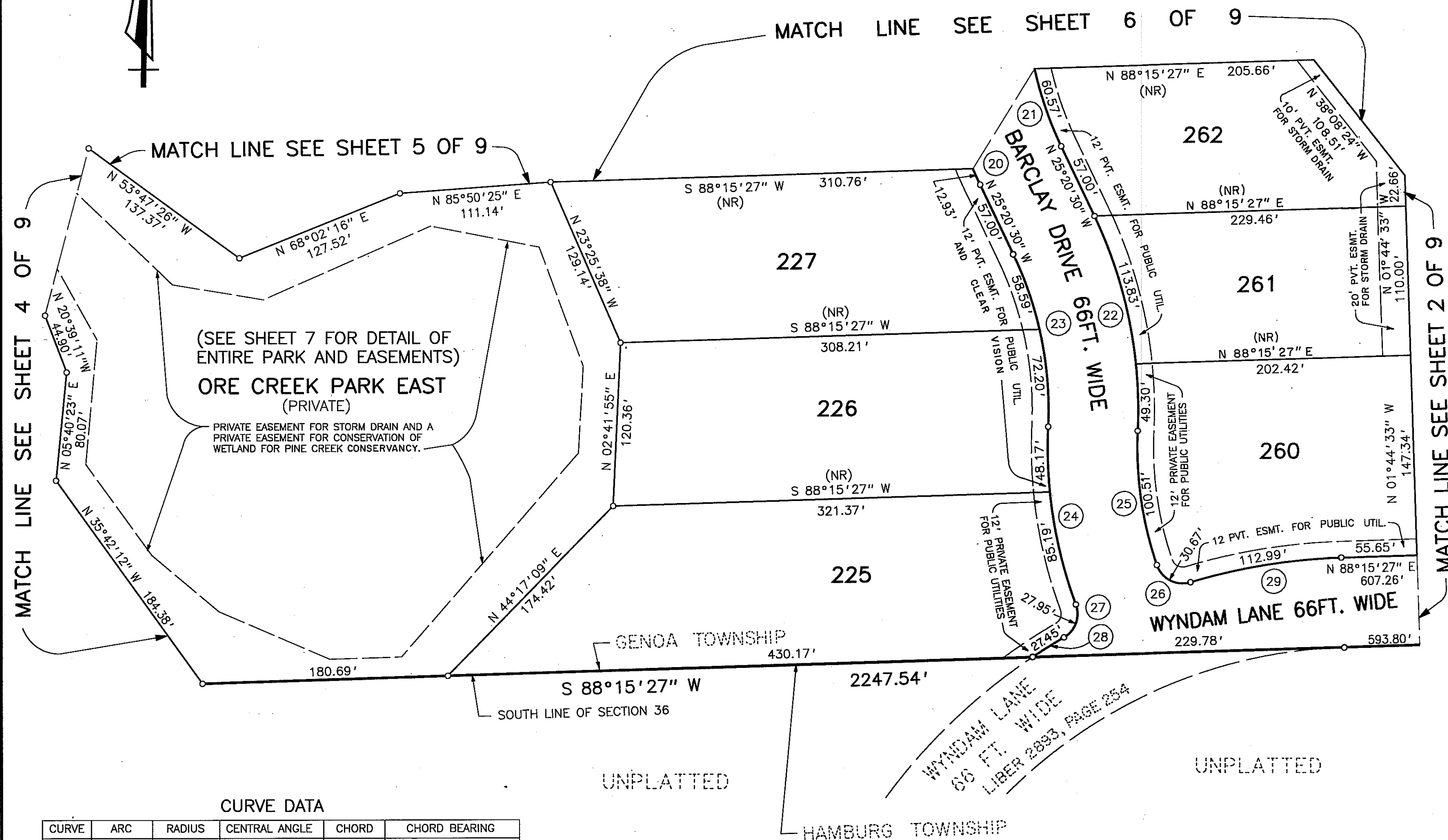
SCALE 1" = 60'



LIBER PAGE  
SHEET 3 OF 9 SHEETS



LOCATION MAP  
SCALE 1" = 2000'



## LEGEND

- ALL DIMENSIONS ARE GIVEN IN FEET.
- CURVILINEAR MEASUREMENTS ARE ARC DISTANCES.
- THE SYMBOL "o" INDICATES A SET MONUMENT WHICH IS A ONE-HALF (1/2) INCH DIAMETER STEEL BAR THIRTY SIX (36) INCHES LONG, ENCASED IN CONCRETE FOUR (4) INCHES IN DIAMETER.
- LOT CORNERS HAVE BEEN MARKED WITH STEEL BARS ONE-HALF (1/2) INCH IN DIAMETER, AND EIGHTEEN (18) INCHES IN LENGTH.
- (R) INDICATES A RADIAL LINE.
- (NR) INDICATES A NON RADIAL LINE.
- ⊥ INDICATES A RIGHT ANGLE.
- BEARINGS ARE IN RELATION TO THE TRUE MERIDIAN, AS DETERMINED BY POLARIS OBSERVATION, DATE 11/13/1984.
- DENOTES FOUND MONUMENT 1/2 INCH STEEL BAR ENCASED IN CONCRETE 4 INCHES IN DIAMETER.

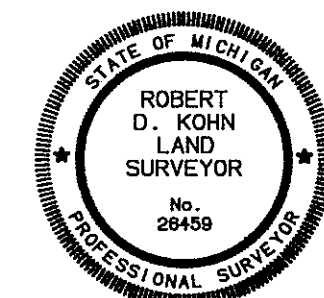
THIS PLAT IS SUBJECT TO RESTRICTIONS AS REQUIRED BY ACT 288 OF 1967 AS AMENDED ON CERTAIN LOTS WITH RESPECT TO THE REQUIREMENTS OF THE MICHIGAN DEPARTMENT OF ENVIRONMENTAL QUALITY WHICH ARE RECORDED IN LIBER 2493, PAGES 00 56 OF RECORDS OF THIS COUNTY.

## CURVE DATA

CURVE	ARC	RADIUS	CENTRAL ANGLE	CHORD	CHORD BEARING
20	209.76'	333.00'	36° 05' 30"	206.31'	N 07° 17' 45" W
21	168.19'	267.00'	36° 05' 30"	165.42'	N 07° 17' 45" W
22	163.13'	333.00'	28° 04' 02"	161.50'	N 11° 18' 29" W
23	130.79'	267.00'	28° 04' 02"	129.49'	N 11° 18' 29" W
24	133.36'	333.00'	22° 56' 46"	132.47'	N 08° 44' 51" W
25	100.51'	267.00'	21° 34' 03"	99.91'	N 08° 03' 29" W
26	30.67'	20.00'	87° 51' 04"	27.75'	N 62° 46' 03" W
27	27.95'	20.00'	80° 03' 34"	25.73'	N 19° 48' 33" E
28	27.45'	433.00'	03° 37' 57"	27.45'	N 58° 01' 21" E
29	112.99'	433.00'	14° 57' 02"	112.66'	N 80° 46' 56" E

## NOTE:

ALL STORM DRAIN AND DETENTION EASEMENTS ARE UNDER THE JURISDICTION OF THE LIVINGSTON COUNTY DRAIN COMMISSIONER AND THE PINE CREEK RIDGE NO. 6 DRAIN, DRAINAGE DISTRICT.



*Robert D. Kohn*

**Giffels-Webster Engineers Inc.**  
ENGINEERS - SURVEYORS - PLANNERS  
2871 BOND STREET ROCHESTER HILLS MICHIGAN  
(248) 852-3100



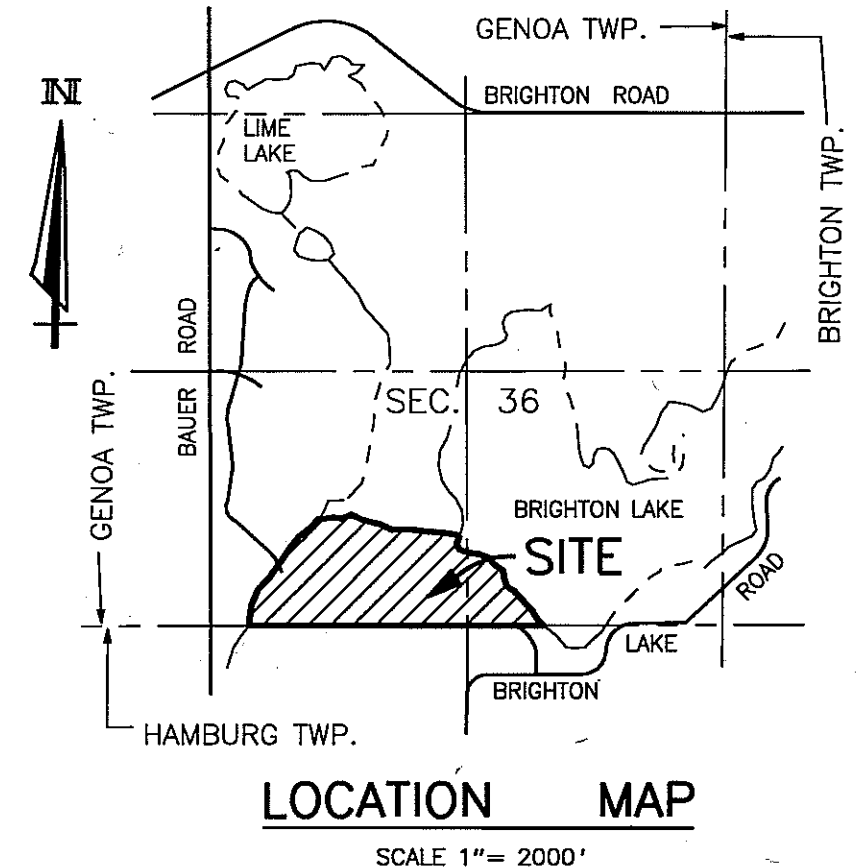
LIBER PAGE  
SHEET 4 OF 9 SHEETS

CURVE DATA



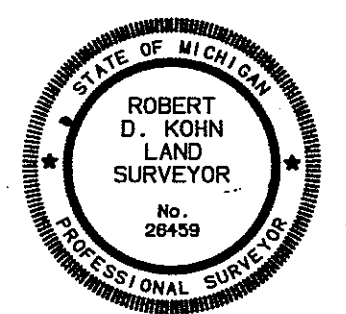
ALL STORM DRAIN AND DETENTION  
EASEMENTS ARE UNDER THE JURISDICTION  
OF THE LIVINGSTON COUNTY DRAIN  
COMMISSIONER AND THE PINE CREEK RIDGE  
NO. 6 DRAIN, DRAINAGE DISTRICT.

CURVE	ARC	RADIUS	CENTRAL ANGLE	CHORD	CHORD BEARING
30	67.35'	417.58'	09° 14' 29"	67.28'	N 04° 52' 46" E
31	80.30'	483.58'	09° 30' 52"	80.21'	N 04° 44' 34" E
32	320.66'	217.00'	84° 40' 00"	292.27'	N 32° 50' 00" W
33	418.19'	283.00'	84° 40' 00"	381.17'	N 32° 50' 00" W
34	25.00'	267.00'	05° 21' 53"	24.99'	N 72° 29' 03" W
35	60.30'	333.00'	10° 22' 31"	60.22'	N 69° 58' 44" W



## LEGEND

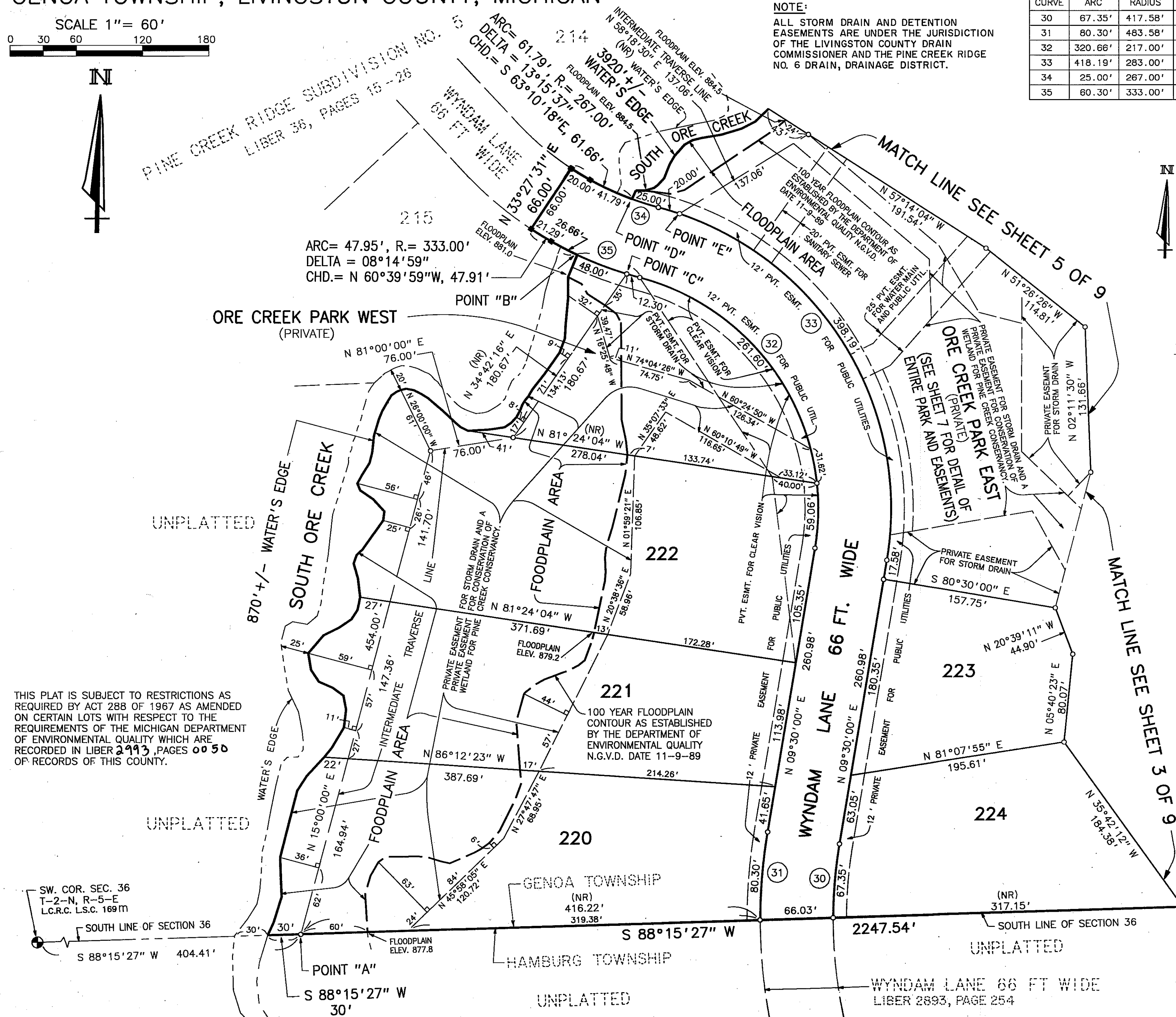
1. ALL DIMENSIONS ARE GIVEN IN FEET.
2. CURVILINEAR MEASUREMENTS ARE ARC DISTANCES.
3. THE SYMBOL "o" INDICATES A SET MONUMENT WHICH IS A ONE-HALF (1/2) INCH DIAMETER STEEL BAR THIRTY SIX (36) INCHES LONG, ENCASED IN CONCRETE FOUR (4) INCHES IN DIAMETER.
4. LOT CORNERS HAVE BEEN MARKED WITH STEEL BARS ONE-HALF (1/2) INCH IN DIAMETER, AND EIGHTEEN (18) INCHES IN LENGTH.
5. (R) INDICATES A RADIAL LINE.
6. (NR) INDICATES A NON RADIAL LINE.
7. L INDICATES A RIGHT ANGLE.
8. BEARINGS ARE IN RELATION TO THE TRUE MERIDIAN, AS DETERMINED BY POLARIS OBSERVATION, DATE 11/13/1984.
9. ■ DENOTES FOUND MONUMENT 1/2 INCH STEEL BAR ENCASED IN CONCRETE 4 INCHES IN DIAMETER.



Robert D. Hohn

**Giffels-Webster Engineers Inc.**  
ENGINEERS - SURVEYORS - PLANNERS  
2871 BOND STREET ROCHESTER HILLS MICHIGAN  
(248) 852-3100

THIS PLAT IS SUBJECT TO RESTRICTIONS AS  
REQUIRED BY ACT 288 OF 1967 AS AMENDED  
ON CERTAIN LOTS WITH RESPECT TO THE  
REQUIREMENTS OF THE MICHIGAN DEPARTMENT  
OF ENVIRONMENTAL QUALITY WHICH ARE  
RECORDED IN LIBER 2993, PAGES 0050  
OF RECORDS OF THIS COUNTY.



# PINE CREEK RIDGE SUBDIVISION NO. 6

A PART OF THE SE. 1/4 AND SW. 1/4 OF SECTION 36, T-2-N, R-5-E,  
GENOA TOWNSHIP, LIVINGSTON COUNTY, MICHIGAN

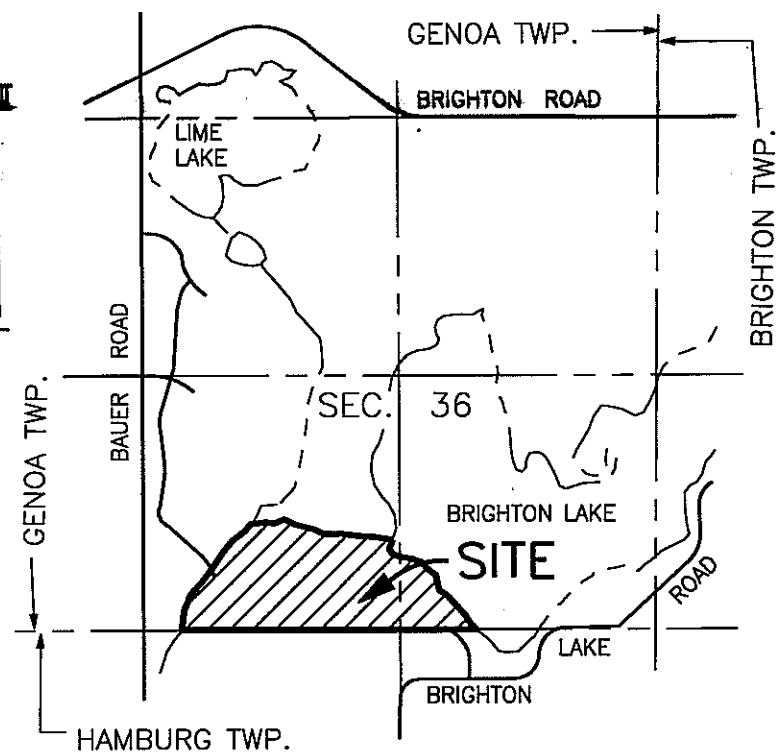
PINE CREEK RIDGE SUBDIVISION NO. 1  
LIBER 28, PAGES 15-25

LIBER PAGE  
SHEET 5 OF 9 SHEETS

SCALE 1" = 60'



PINE CREEK RIDGE SUBDIVISION NO. 6  
LIBER 36, PAGES 15-26



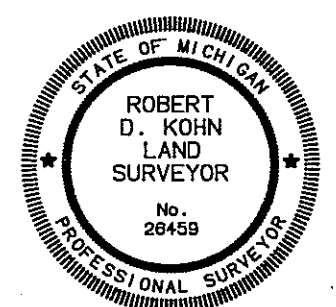
LOCATION MAP

SCALE 1" = 2000'

## LEGEND

- ALL DIMENSIONS ARE GIVEN IN FEET.
- CURVILINEAR MEASUREMENTS ARE ARC DISTANCES.
- THE SYMBOL "o" INDICATES A SET MONUMENT WHICH IS A ONE-HALF (1/2) INCH DIAMETER STEEL BAR THIRTY SIX (36) INCHES LONG, ENCASED IN CONCRETE FOUR (4) INCHES IN DIAMETER.
- LOT CORNERS HAVE BEEN MARKED WITH STEEL BARS ONE-HALF (1/2) INCH IN DIAMETER, AND EIGHTEEN (18) INCHES IN LENGTH.
- (R) INDICATES A RADIAL LINE.
- (NR) INDICATES A NON RADIAL LINE.
- ⊥ INDICATES A RIGHT ANGLE.
- BEARINGS ARE IN RELATION TO THE TRUE MERIDIAN, AS DETERMINED BY POLARIS OBSERVATION, DATE 11/13/1984.
- DENOTES FOUND MONUMENT 1/2 INCH STEEL BAR ENCASED IN CONCRETE 4 INCHES IN DIAMETER.

THIS PLAT IS SUBJECT TO RESTRICTIONS AS REQUIRED BY ACT 288 OF 1967 AS AMENDED ON CERTAIN LOTS WITH RESPECT TO THE REQUIREMENTS OF THE MICHIGAN DEPARTMENT OF ENVIRONMENTAL QUALITY WHICH ARE RECORDED IN LIBER 2993, PAGES 0050 OF RECORDS OF THIS COUNTY.



*Robert D. Kohn*

**Giffels-Webster Engineers Inc.**

ENGINEERS - SURVEYORS - PLANNERS  
2871 BOND STREET ROCHESTER HILLS MICHIGAN  
(248) 852-3100

## NOTE:

ALL STORM DRAIN AND DETENTION EASEMENTS ARE UNDER THE JURISDICTION OF THE LIVINGSTON COUNTY DRAIN COMMISSIONER AND THE PINE CREEK RIDGE NO. 6 DRAIN, DRAINAGE DISTRICT.

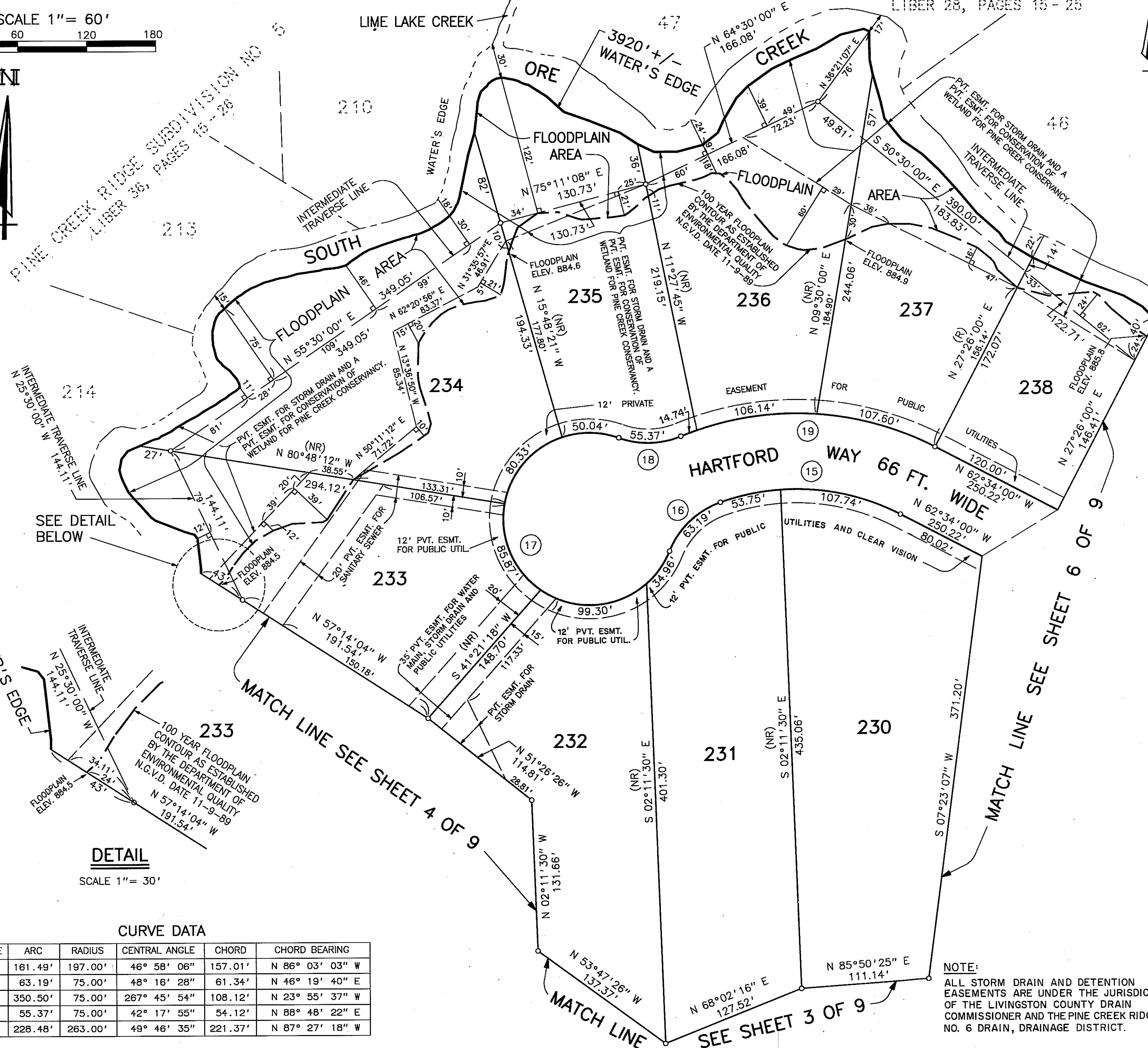
SEE DETAIL BELOW

## DETAIL

SCALE 1" = 30'

## CURVE DATA

CURVE	ARC	RADIUS	CENTRAL ANGLE	CHORD	CHORD BEARING
15	161.49'	197.00'	46° 58' 06"	157.01'	N 86° 03' 03" W
16	63.19'	75.00'	48° 16' 28"	61.34'	N 46° 19' 40" E
17	350.50'	75.00'	267° 45' 54"	108.12'	N 23° 55' 37" W
18	55.37'	75.00'	42° 17' 55"	54.12'	N 88° 48' 22" E
19	228.48'	263.00'	49° 46' 35"	221.37'	N 87° 27' 18" W



# PINE CREEK RIDGE SUBDIVISION NO. 6

A PART OF THE SE. 1/4 AND SW. 1/4 OF SECTION 36, T-2-N, R-5-E,  
GENOA TOWNSHIP, LIVINGSTON COUNTY, MICHIGAN

LIBER PAGE  
SHEET 6 OF 9 SHEETS

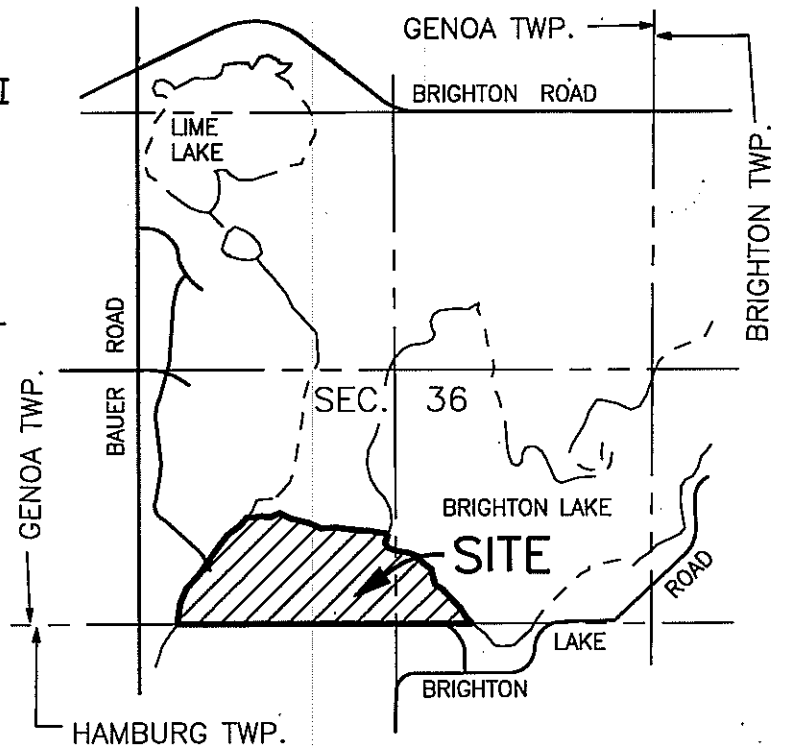
SCALE 1" = 60'



CURVE DATA

CURVE	ARC	RADIUS	CENTRAL ANGLE	CHORD	CHORD BEARING
8	268.44'	383.00'	40° 09' 30"	262.98'	N 82° 29' 45" W
9	222.18'	317.00'	40° 09' 30"	217.66'	N 82° 29' 45" W
10	291.18'	417.00'	40° 00' 30"	285.30'	N 82° 34' 15" W
11	145.64'	483.00'	17° 16' 36"	145.09'	N 86° 03' 48" E
12	29.30'	20.00'	83° 57' 06"	26.75'	N 52° 43' 33" E
13	29.30'	20.00'	83° 57' 06"	26.75'	N 31° 13' 33" W
14	89.65'	483.00'	10° 38' 06"	89.52'	N 67° 53' 03" W
20	209.76'	333.00'	36° 05' 30"	206.31'	N 07° 17' 45" W
21	168.19'	267.00'	36° 05' 30"	165.42'	N 07° 17' 45" W

NOTE:  
ALL STORM DRAIN AND DETENTION  
EASEMENTS ARE UNDER THE JURISDICTION  
OF THE LIVINGSTON COUNTY DRAIN  
COMMISSIONER AND THE PINE CREEK RIDGE  
NO. 6 DRAIN, DRAINAGE DISTRICT.



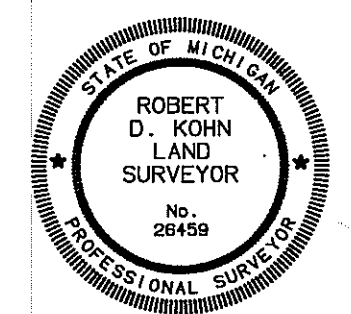
LOCATION MAP

SCALE 1" = 2000'

BRIGHTON LAKE  
CONTROLLED WATER SURFACE  
ELEV. 900.3 N.G.V.D.

LEGEND

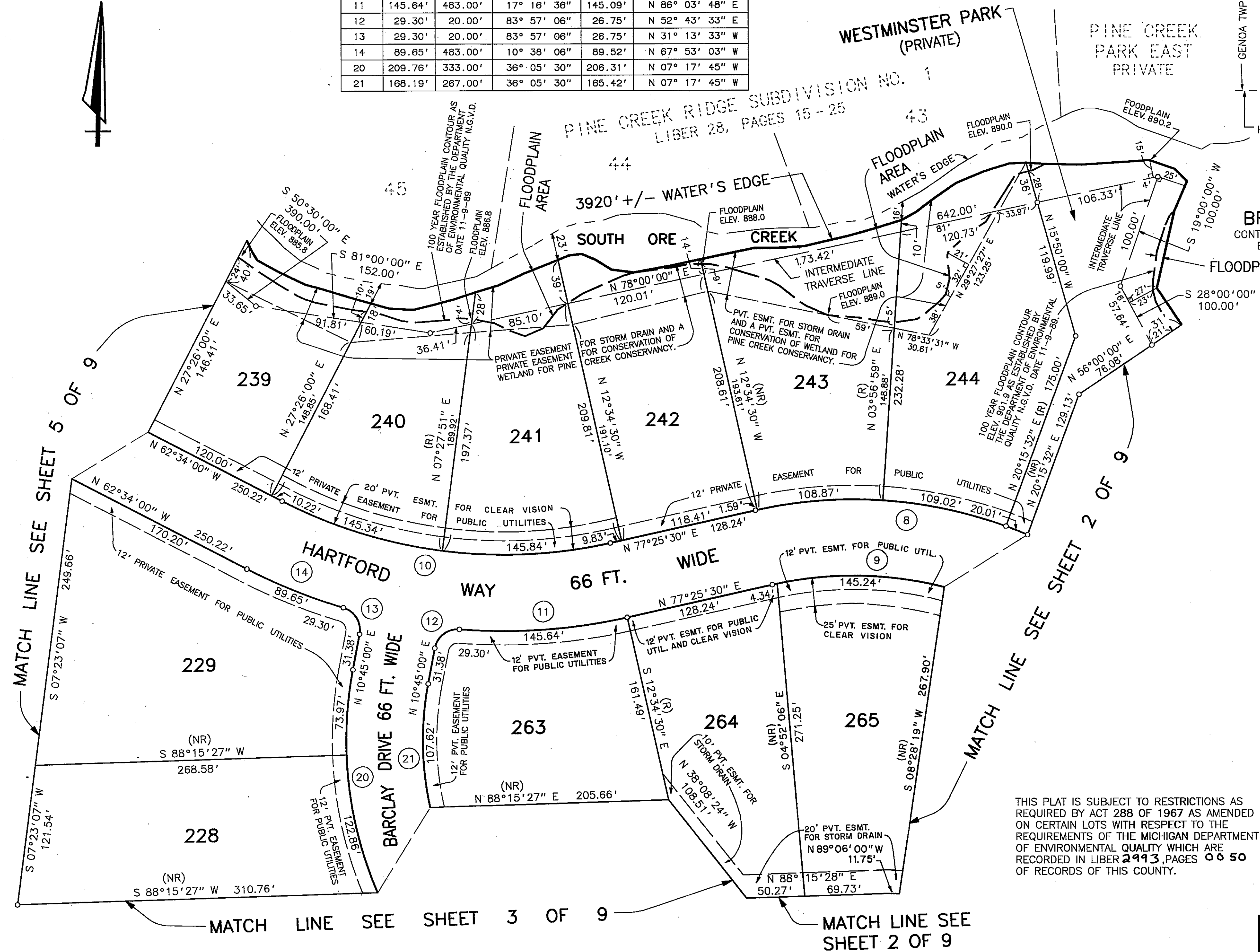
- ALL DIMENSIONS ARE GIVEN IN FEET.
- CURVILINEAR MEASUREMENTS ARE ARC DISTANCES.
- THE SYMBOL "o" INDICATES A SET MONUMENT WHICH IS A ONE-HALF (1/2) INCH DIAMETER STEEL BAR THIRTY SIX (36) INCHES LONG, ENCASED IN CONCRETE FOUR (4) INCHES IN DIAMETER.
- LOT CORNERS HAVE BEEN MARKED WITH STEEL BARS ONE-HALF (1/2) INCH IN DIAMETER, AND EIGHTEEN (18) INCHES IN LENGTH.
- (R) INDICATES A RADIAL LINE.
- (NR) INDICATES A NON RADIAL LINE.
- L INDICATES A RIGHT ANGLE.
- BEARINGS ARE IN RELATION TO THE TRUE MERIDIAN, AS DETERMINED BY POLARIS OBSERVATION, DATE 11/13/1984.
- DENOTES FOUND MONUMENT 1/2 INCH STEEL BAR ENCASED IN CONCRETE 4 INCHES IN DIAMETER.



THIS PLAT IS SUBJECT TO RESTRICTIONS AS  
REQUIRED BY ACT 288 OF 1967 AS AMENDED  
ON CERTAIN LOTS WITH RESPECT TO THE  
REQUIREMENTS OF THE MICHIGAN DEPARTMENT  
OF ENVIRONMENTAL QUALITY WHICH ARE  
RECORDED IN LIBER 2493, PAGES 06 50  
OF RECORDS OF THIS COUNTY.

Robert D. Kohn

Giffels-Webster Engineers Inc.  
ENGINEERS - SURVEYORS - PLANNERS  
2871 BOND STREET ROCHESTER HILLS MICHIGAN  
(248) 852-3100

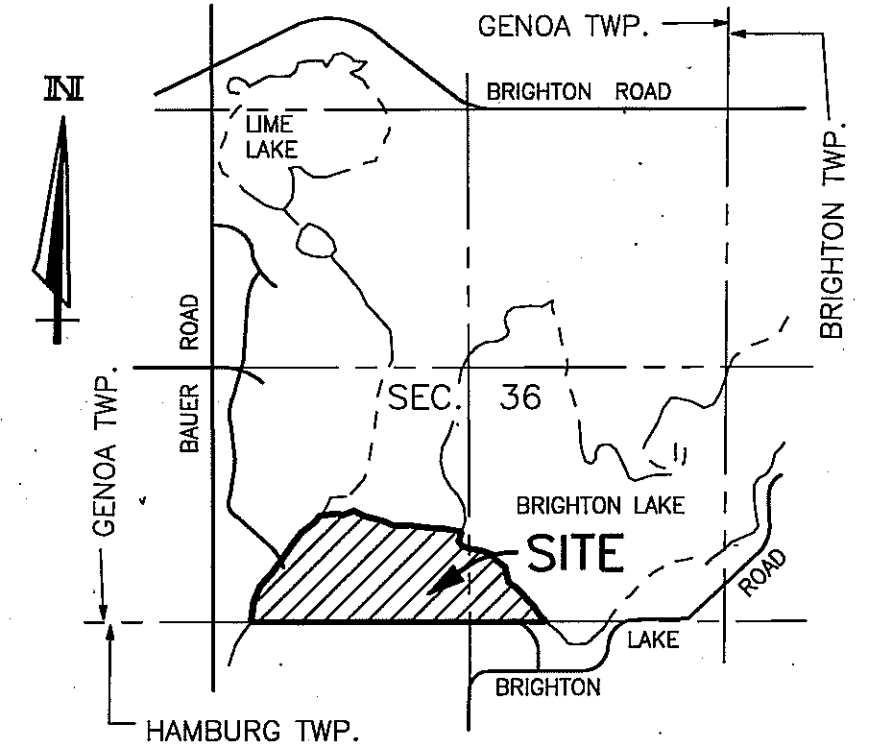
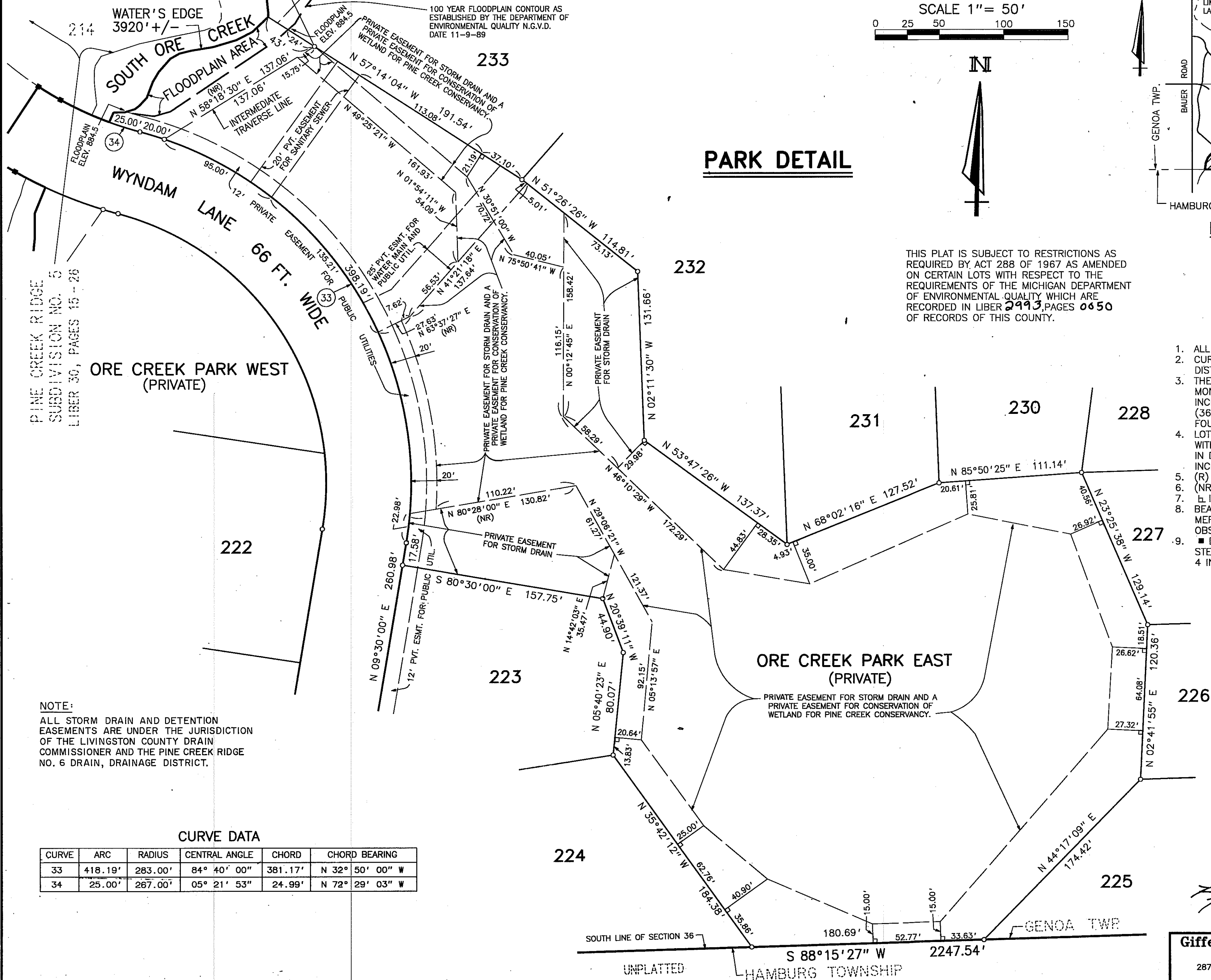




# PINE CREEK RIDGE SUBDIVISION NO. 6

A PART OF THE SE. 1/4 AND SW. 1/4 OF SECTION 36, T-2-N, R-5-E,  
GENOA TOWNSHIP, LIVINGSTON COUNTY, MICHIGAN

LIBER PAGE  
SHEET 7 OF 9 SHEETS

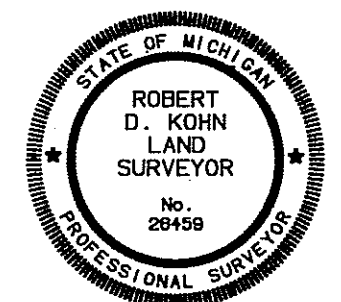


<u>LOCATION</u>	<u>MAP</u>
-----------------	------------

SCALE 1" = 2000'

### LEGEND

1. ALL DIMENSIONS ARE GIVEN IN FEET.
2. CURVILINEAR MEASUREMENTS ARE ARC DISTANCES.
3. THE SYMBOL "o" INDICATES A SET MONUMENT WHICH IS A ONE-HALF (1/2) INCH DIAMETER STEEL BAR THIRTY SIX (36) INCHES LONG, ENCASED IN CONCRETE FOUR (4) INCHES IN DIAMETER.
4. LOT CORNERS HAVE BEEN MARKED WITH STEEL BARS ONE-HALF (1/2) INCH IN DIAMETER, AND EIGHTEEN (18) INCHES IN LENGTH.
5. (R) INDICATES A RADIAL LINE.
6. (NR) INDICATES A NON RADIAL LINE.
7. E INDICATES A RIGHT ANGLE.
8. BEARINGS ARE IN RELATION TO THE TRUE MERIDIAN, AS DETERMINED BY POLARIS OBSERVATION, DATE 11/13/1984.
9. ■ DENOTES FOUND MONUMENT 1/2 INCH STEEL BAR ENCASED IN CONCRETE 4 INCHES IN DIAMETER.



Robert D. Hohn

**Giffels-Webster Engineers Inc.**  
ENGINEERS - SURVEYORS - PLANNERS  
2871 BOND STREET ROCHESTER HILLS MICHIGAN  
(248) 852-3100