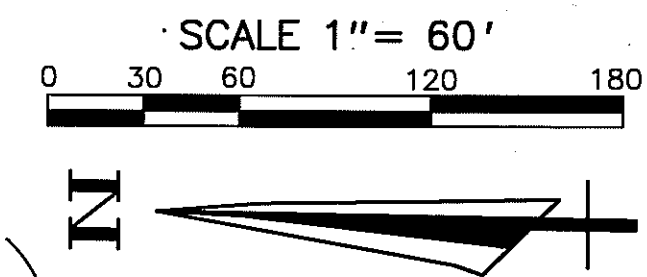


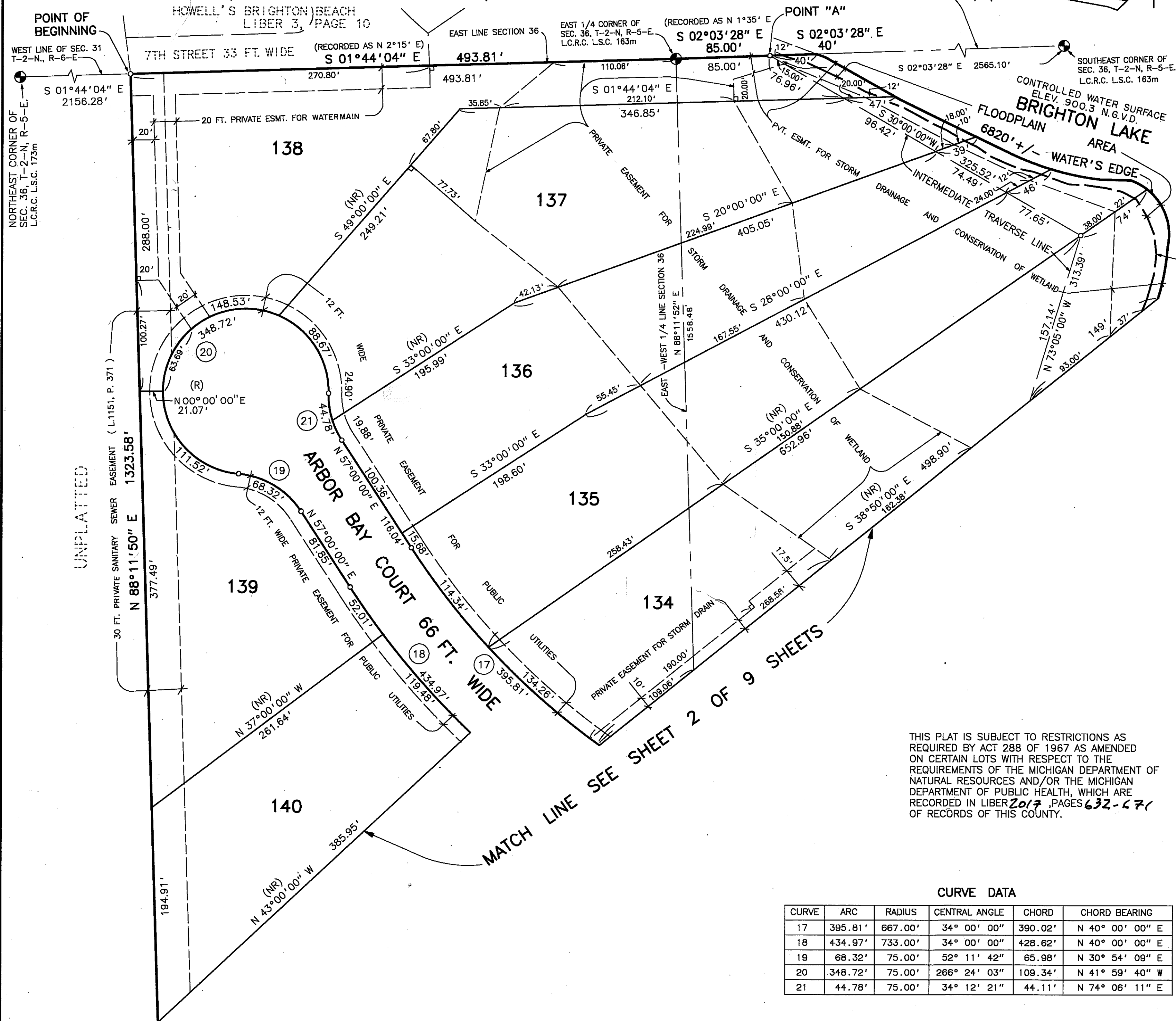
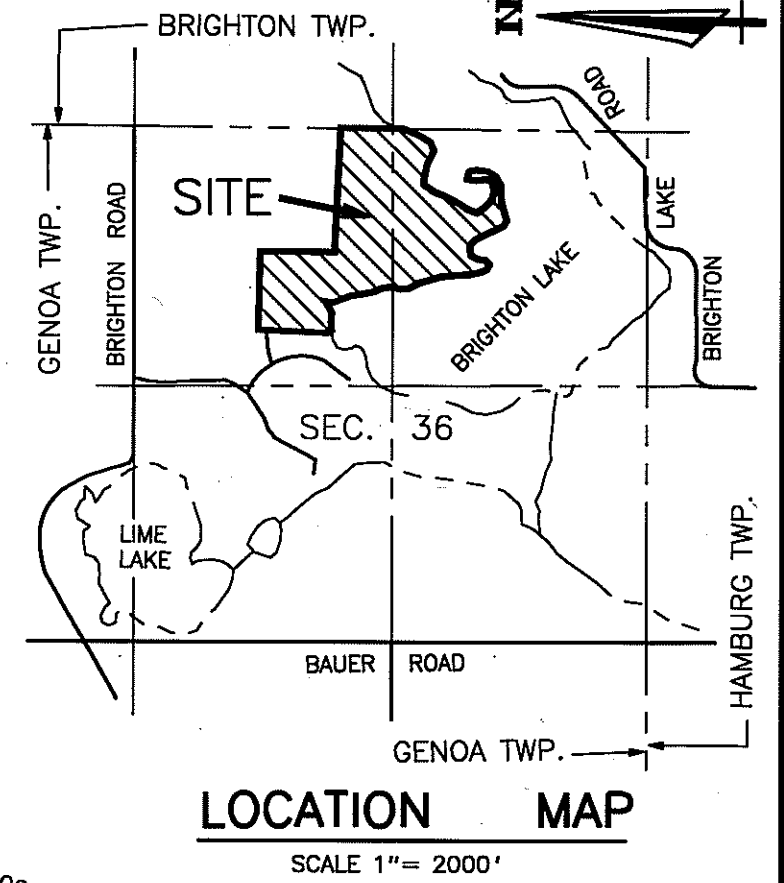
# PINE CREEK RIDGE SUBDIVISION NO. 4

A PART OF THE NE. 1/4 & SE. 1/4 OF SECTION 36, T-2-N, R-5-E,  
GENOA TOWNSHIP, LIVINGSTON COUNTY, MICHIGAN

CORPORATE LIMITS BRIGHTON TWP AND GENOA TWP



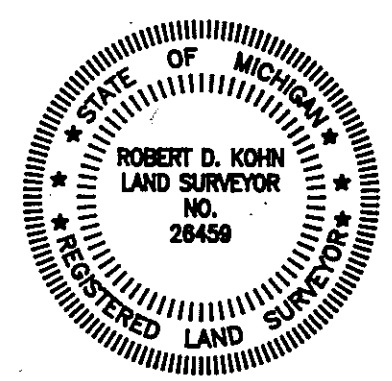
LIBER PAGE  
SHEET 1 OF 9 SHEETS



## LEGEND

- ALL DIMENSIONS ARE GIVEN IN FEET.
- CURVILINEAR MEASUREMENTS ARE ARC DISTANCES.
- CONCRETE MONUMENTS HAVE BEEN PLACED AT ALL POINTS MARKED "O".
- CONCRETE MONUMENTS ARE STEEL BARS ONE-HALF (1/2) INCH IN DIAMETER AND THIRTY SIX (36) INCHES IN LENGTH, ENCASED IN A CONCRETE CYLINDER FOUR (4) INCHES IN DIAMETER, AND THIRTY SIX (36) INCHES IN LENGTH.
- LOT CORNERS HAVE BEEN MARKED WITH STEEL BARS ONE-HALF (1/2) INCH IN DIAMETER, AND EIGHTEEN (18) INCHES IN LENGTH.
- (R) INDICATES A RADIAL LINE.
- (NR) INDICATES A NON RADIAL LINE.
- ⊥ INDICATES A RIGHT ANGLE.
- BEARINGS ARE IN RELATION TO THE TRUE MERIDIAN, AS DETERMINED BY POLARIS OBSERVATION, DATE 11/13/1984.

THIS PLAT IS SUBJECT TO RESTRICTIONS AS REQUIRED BY ACT 288 OF 1967 AS AMENDED ON CERTAIN LOTS WITH RESPECT TO THE REQUIREMENTS OF THE MICHIGAN DEPARTMENT OF NATURAL RESOURCES AND/OR THE MICHIGAN DEPARTMENT OF PUBLIC HEALTH, WHICH ARE RECORDED IN LIBER 2017, PAGES 632-671 OF RECORDS OF THIS COUNTY.



*Robert D. Kohn*

**Giffels-Webster Engineers Inc.**  
ENGINEERS - SURVEYORS - PLANNERS  
2871 BOND STREET ROCHESTER HILLS MICHIGAN  
(810) 852-3100

## CURVE DATA

CURVE	ARC	RADIUS	CENTRAL ANGLE	CHORD	CHORD BEARING
17	395.81'	667.00'	34° 00' 00"	390.02'	N 40° 00' 00" E
18	434.97'	733.00'	34° 00' 00"	428.62'	N 40° 00' 00" E
19	68.32'	75.00'	52° 11' 42"	65.98'	N 30° 54' 09" E
20	348.72'	75.00'	266° 24' 03"	109.34'	N 41° 59' 40" W
21	44.78'	75.00'	34° 12' 21"	44.11'	N 74° 06' 11" E

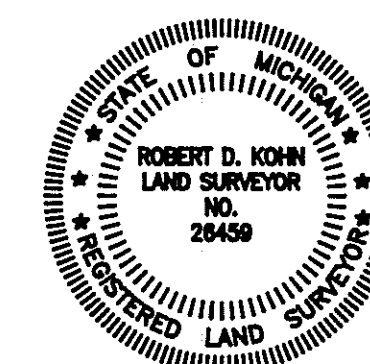
A PART OF THE NE. 1/4 & SE. 1/4 OF SECTION 36, T-2-N, R-5-E,  
GENOA TOWNSHIP, LIVINGSTON COUNTY, MICHIGAN

A map of the Brighton Lake area. The map shows Brighton Lake, Lime Lake, and a proposed site (hatched area) within Section 36. The site is located near Brighton Road and Lime Lake. The map also shows the boundaries of Brighton Twp. and Genoa Twp., and the location of Brighton Lake and Lime Lake. A north arrow is present in the upper right corner.

SCALE 1"= 2000'

1. ALL DIMENSIONS ARE GIVEN IN FEET.
2. CURVILINEAR MEASUREMENTS ARE ARC DISTANCES.
3. CONCRETE MONUMENTS HAVE BEEN PLACED AT ALL POINTS MARKED "o".
4. CONCRETE MONUMENTS ARE STEEL BARS ONE-HALF (1/2) INCH IN DIAMETER AND THIRTY SIX (36) INCHES IN LENGTH, ENCASED IN A CONCRETE CYLINDER FOUR (4) INCHES IN DIAMETER, AND THIRTY SIX (36) INCHES IN LENGTH.
5. LOT CORNERS HAVE BEEN MARKED WITH STEEL BARS ONE-HALF (1/2) INCH IN DIAMETER, AND EIGHTEEN (18) INCHES IN LENGTH.
6. (R) INDICATES A RADIAL LINE.
7. (NR) INDICATES A NON RADIAL LINE.
8. L INDICATES A RIGHT ANGLE.
9. BEARINGS ARE IN RELATION TO THE TRUE MERIDIAN, AS DETERMINED BY POLARIS OBSERVATION, DATE 11/13/1984.

THIS PLAT IS SUBJECT TO RESTRICTIONS AS  
REQUIRED BY ACT 288 OF 1967 AS AMENDED  
ON CERTAIN LOTS WITH RESPECT TO THE  
REQUIREMENTS OF THE MICHIGAN DEPARTMENT OF  
NATURAL RESOURCES AND/OR THE MICHIGAN  
DEPARTMENT OF PUBLIC HEALTH, WHICH ARE  
RECORDED IN LIBER 2072, PAGES 632-671  
OF RECORDS OF THIS COUNTY.



Robert D. Hohn

**Giffels-Webster Engineers Inc.**  
ENGINEERS - SURVEYORS - PLANNERS  
2871 BOND STREET ROCHESTER HILLS MICHIGAN  
(810) 852-3100

CURVE	ARC	RADIUS	CENTRAL ANGLE	CHORD	CHORD BEARING
15	69.85'	667.00'	06° 00' 00"	69.82'	N 26° 00' 00" E
16	76.76'	733.00'	06° 00' 00"	76.72'	N 26° 00' 00" E
17	395.81'	667.00'	34° 00' 00"	390.02'	N 40° 00' 00" E
18	434.97'	733.00'	34° 00' 00"	428.62'	N 40° 00' 00" E

# PINE CREEK RIDGE SUBDIVISION NO. 4

A PART OF THE NE. 1/4 & SE. 1/4 OF SECTION 36, T-2-N, R-5-E,  
GENOA TOWNSHIP, LIVINGSTON COUNTY, MICHIGAN

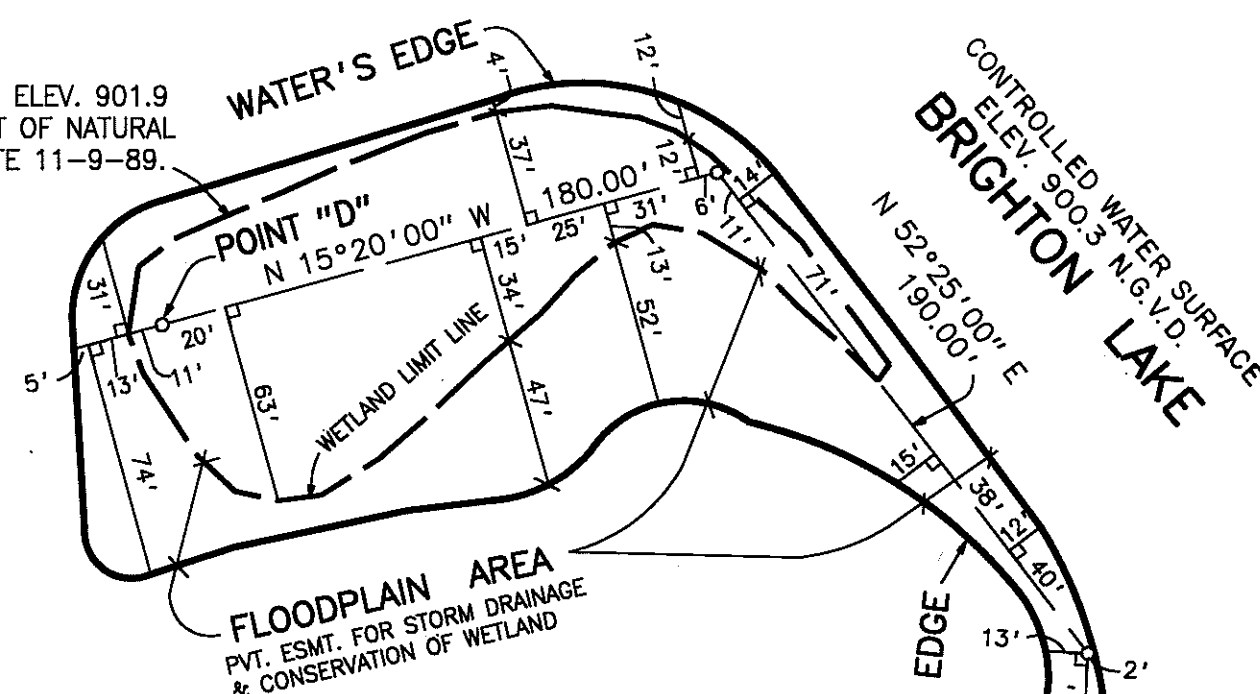
SCALE 1" = 60'



CURVE DATA

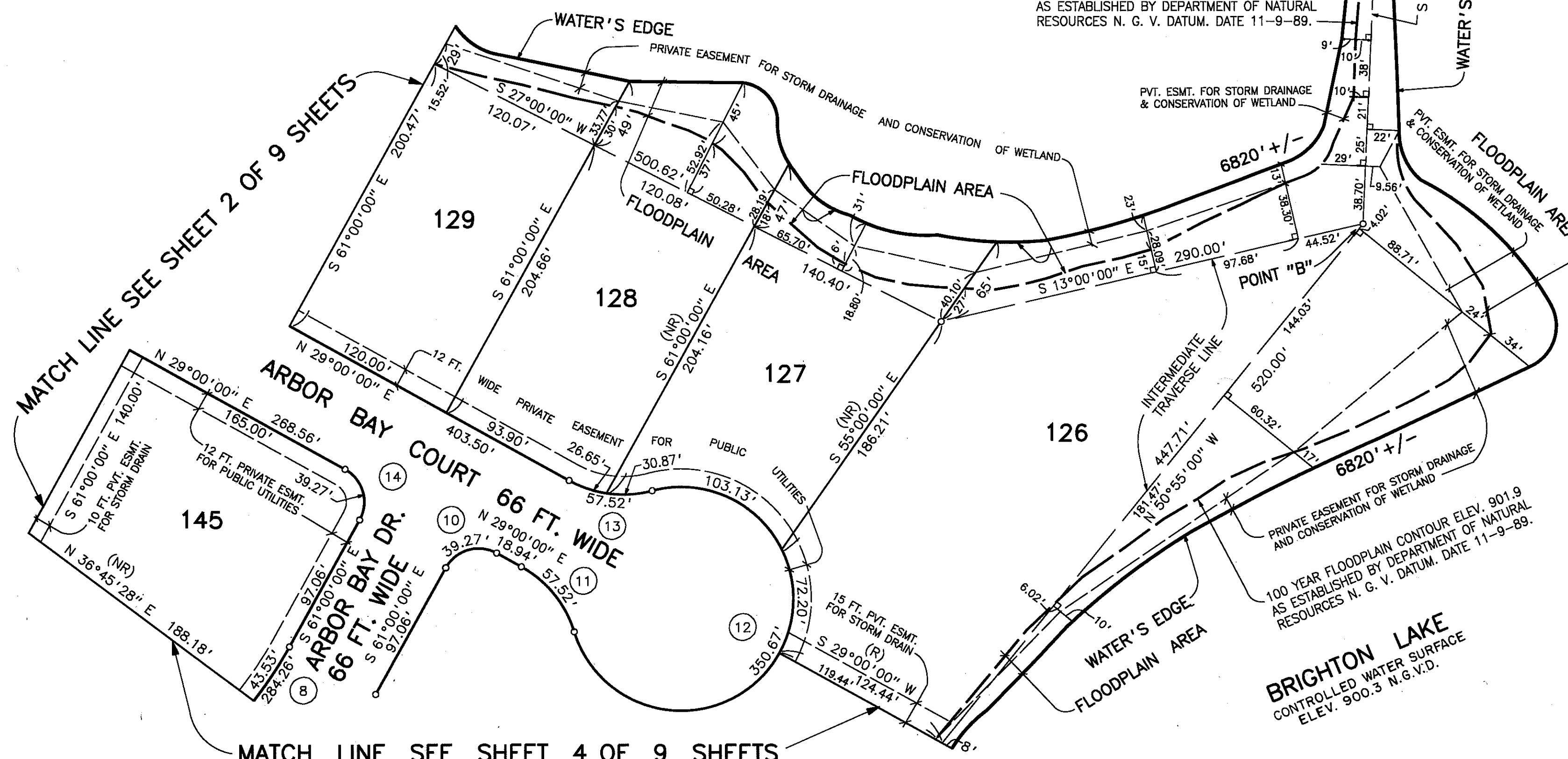
CURVE	ARC	RADIUS	CENTRAL ANGLE	CHORD	CHORD BEARING
8	284.26'	267.00'	61° 00' 00"	271.02'	N 30° 30' 00" W
10	39.27'	25.00'	90° 00' 00"	35.36'	N 16° 00' 00" W
11	57.52'	75.00'	43° 56' 44"	56.12'	N 50° 58' 22" E
12	350.67'	75.00'	267° 53' 28"	108.00'	N 61° 00' 00" W
13	57.52'	75.00'	43° 56' 44"	56.12'	N 07° 01' 38" E
14	39.27'	25.00'	90° 00' 00"	35.36'	N 74° 00' 00" E

100 YEAR FLOODPLAIN CONTOUR ELEV. 901.9  
AS ESTABLISHED BY DEPARTMENT OF NATURAL  
RESOURCES N. G. V. DATUM. DATE 11-9-89.

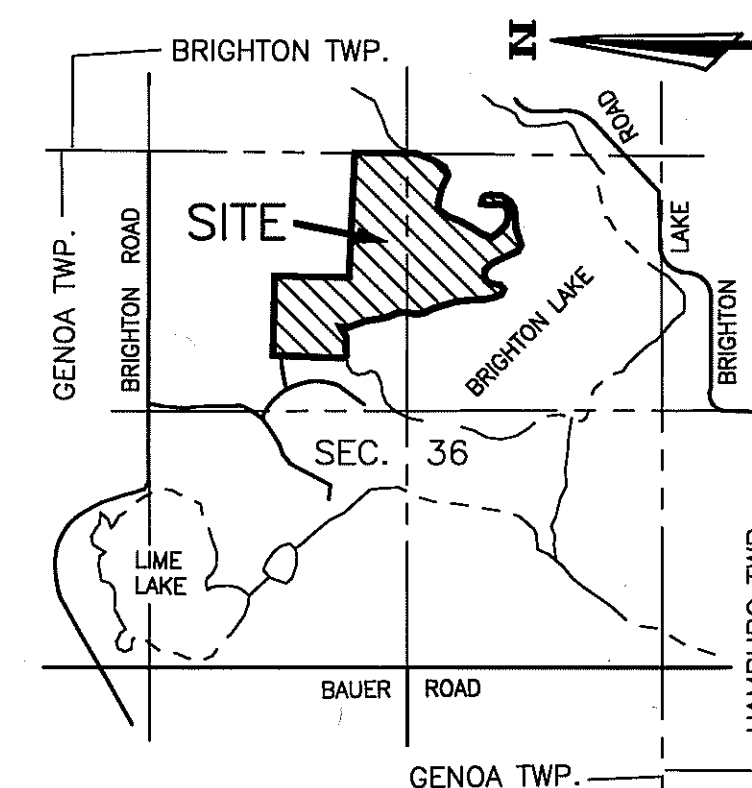


**BRIGHTON LAKE**  
CONTROLLED WATER SURFACE  
ELEV. 900.3 N.G.V.D.

100 YEAR FLOODPLAIN CONTOUR ELEV. 901.9  
AS ESTABLISHED BY DEPARTMENT OF NATURAL  
RESOURCES N. G. V. DATUM. DATE 11-9-89.



LIBER PAGE  
SHEET 3 OF 9 SHEETS



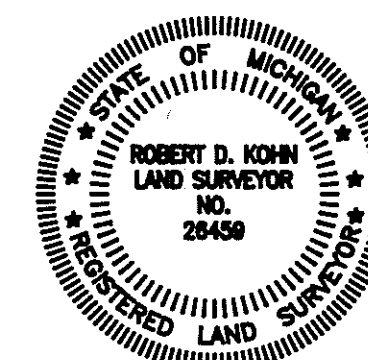
LOCATION MAP

SCALE 1" = 2000'

## LEGEND

1. ALL DIMENSIONS ARE GIVEN IN FEET.
2. CURVILINEAR MEASUREMENTS ARE ARC DISTANCES.
3. CONCRETE MONUMENTS HAVE BEEN PLACED AT ALL POINTS MARKED "o".
4. CONCRETE MONUMENTS ARE STEEL BARS ONE-HALF (1/2) INCH IN DIAMETER AND THIRTY SIX (36) INCHES IN LENGTH, ENCASED IN A CONCRETE CYLINDER FOUR (4) INCHES IN DIAMETER, AND THIRTY SIX (36) INCHES IN LENGTH.
5. LOT CORNERS HAVE BEEN MARKED WITH STEEL BARS ONE-HALF (1/2) INCH IN DIAMETER, AND EIGHTEEN (18) INCHES IN LENGTH.
6. (R) INDICATES A RADIAL LINE.
7. (NR) INDICATES A NON RADIAL LINE.
8. L INDICATES A RIGHT ANGLE.
9. BEARINGS ARE IN RELATION TO THE TRUE MERIDIAN, AS DETERMINED BY POLARIS OBSERVATION, DATE 11/13/1984.

THIS PLAT IS SUBJECT TO RESTRICTIONS AS REQUIRED BY ACT 288 OF 1967 AS AMENDED ON CERTAIN LOTS WITH RESPECT TO THE REQUIREMENTS OF THE MICHIGAN DEPARTMENT OF NATURAL RESOURCES AND/OR THE MICHIGAN DEPARTMENT OF PUBLIC HEALTH, WHICH ARE RECORDED IN LIBER 2017, PAGES 632-671 OF RECORDS OF THIS COUNTY.



*Robert D. Kohn*

**Giffels-Webster Engineers Inc.**

ENGINEERS - SURVEYORS - PLANNERS  
2871 BOND STREET ROCHESTER HILLS MICHIGAN  
(810) 852-3100



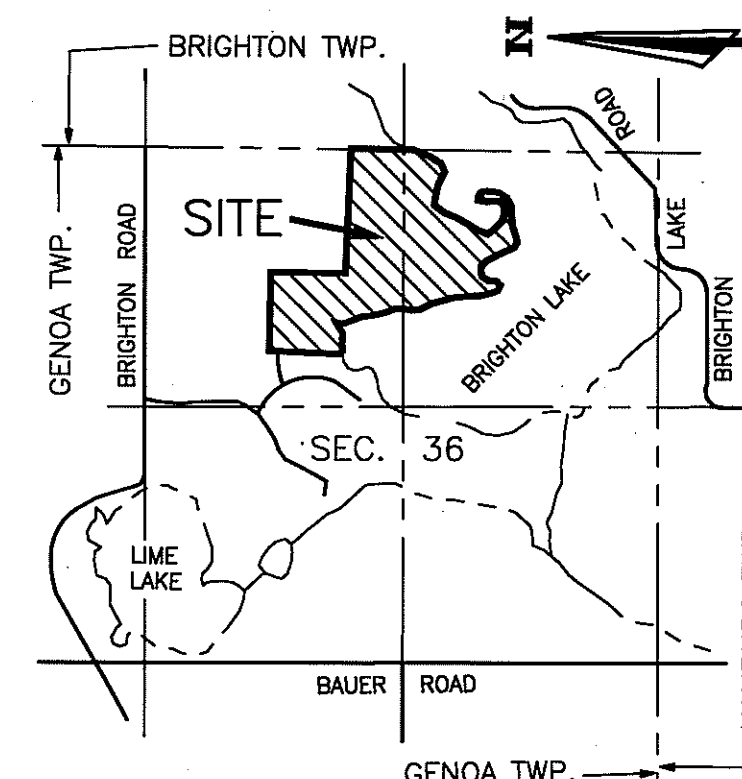
# PINE CREEK RIDGE SUBDIVISION NO. 4

A PART OF THE NE. 1/4 & SE. 1/4 OF SECTION 36, T-2-N, R-5-E,  
GENOA TOWNSHIP, LIVINGSTON COUNTY, MICHIGAN

SCALE 1" = 60'



LIBER PAGE  
SHEET 4 OF 9 SHEETS

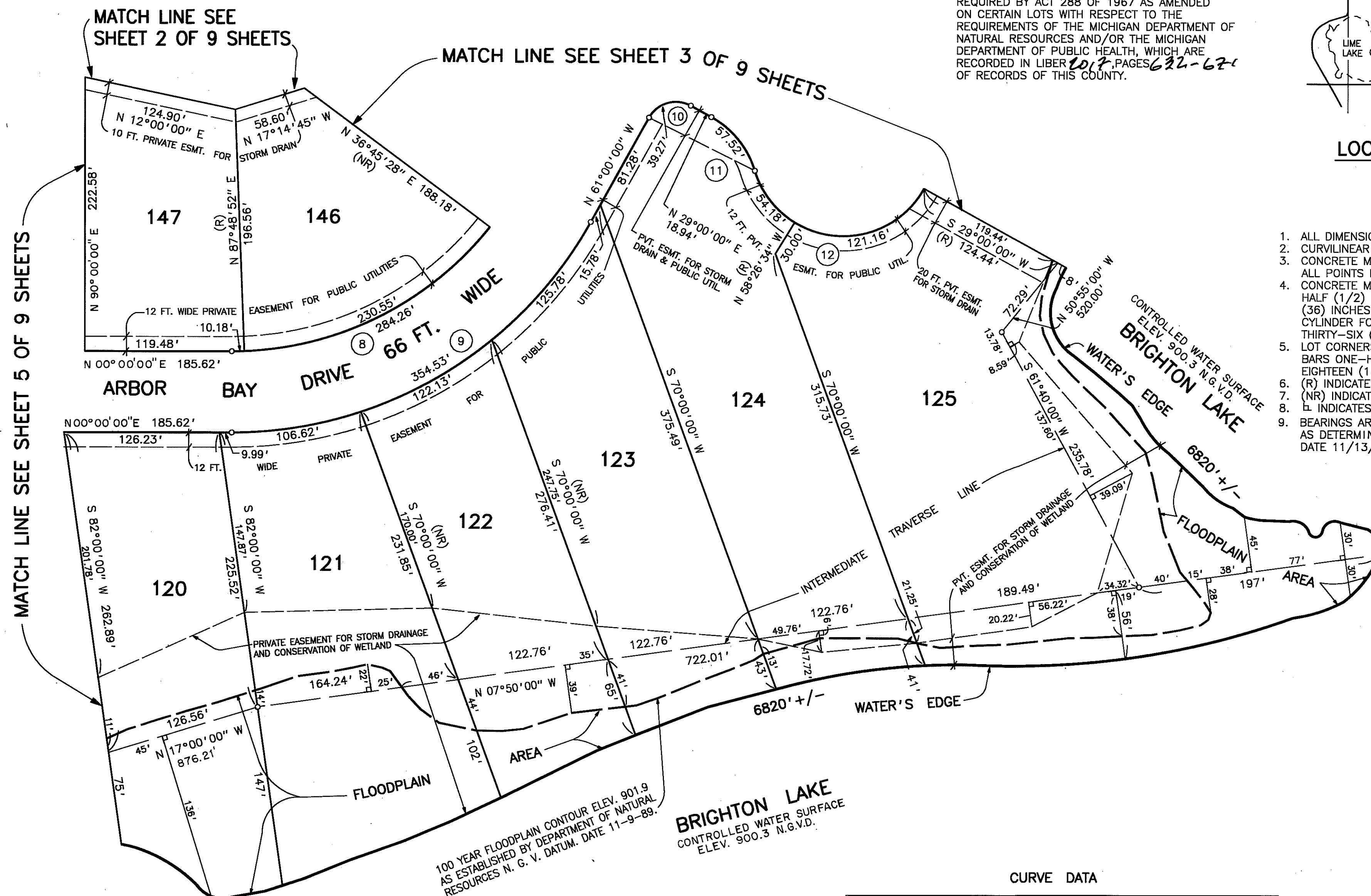


LOCATION MAP

SCALE 1" = 2000'

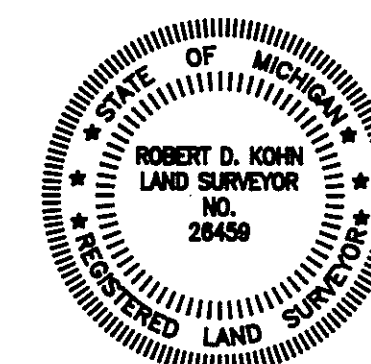
## LEGEND

1. ALL DIMENSIONS ARE GIVEN IN FEET.
2. CURVILINEAR MEASUREMENTS ARE ARC DISTANCES.
3. CONCRETE MONUMENTS HAVE BEEN PLACED AT ALL POINTS MARKED "o".
4. CONCRETE MONUMENTS ARE STEEL BARS ONE-HALF (1/2) INCH IN DIAMETER AND THIRTY-SIX (36) INCHES IN LENGTH, ENCASED IN A CONCRETE CYLINDER FOUR (4) INCHES IN DIAMETER, AND THIRTY-SIX (36) INCHES IN LENGTH.
5. LOT CORNERS HAVE BEEN MARKED WITH STEEL BARS ONE-HALF (1/2) INCH IN DIAMETER, AND EIGHTEEN (18) INCHES IN LENGTH.
6. (R) INDICATES A RADIAL LINE.
7. (NR) INDICATES A NON RADIAL LINE.
8. L INDICATES A RIGHT ANGLE.
9. BEARINGS ARE IN RELATION TO THE TRUE MERIDIAN, AS DETERMINED BY POLARIS OBSERVATION, DATE 11/13/1984.



## CURVE DATA

CURVE	ARC	RADIUS	CENTRAL ANGLE	CHORD	CHORD BEARING
8	284.26'	267.00'	61° 00' 00"	271.02'	N 30° 30' 00" W
9	354.53'	333.00'	61° 00' 00"	338.02'	N 30° 30' 00" W
10	39.27'	25.00'	90° 00' 00"	35.36'	N 16° 00' 00" W
11	57.52'	75.00'	43° 56' 44"	56.12'	N 50° 58' 22" E
12	350.67'	75.00'	267° 53' 28"	108.00'	N 61° 00' 00" W



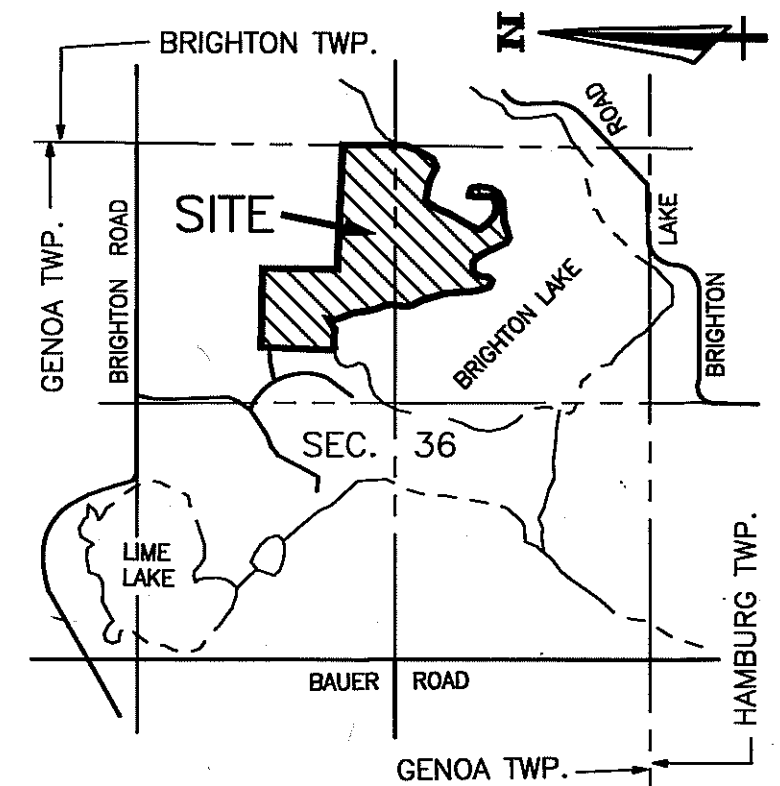
Robert D. Kohn

**Giffels-Webster Engineers Inc.**  
ENGINEERS - SURVEYORS - PLANNERS  
2871 BOND STREET ROCHESTER HILLS MICHIGAN  
(810) 852-3100

# PINE CREEK RIDGE SUBDIVISION NO. 4

A PART OF THE NE. 1/4 & SE. 1/4 OF SECTION 36, T-2-N, R-5-E,  
GENOA TOWNSHIP, LIVINGSTON COUNTY, MICHIGAN

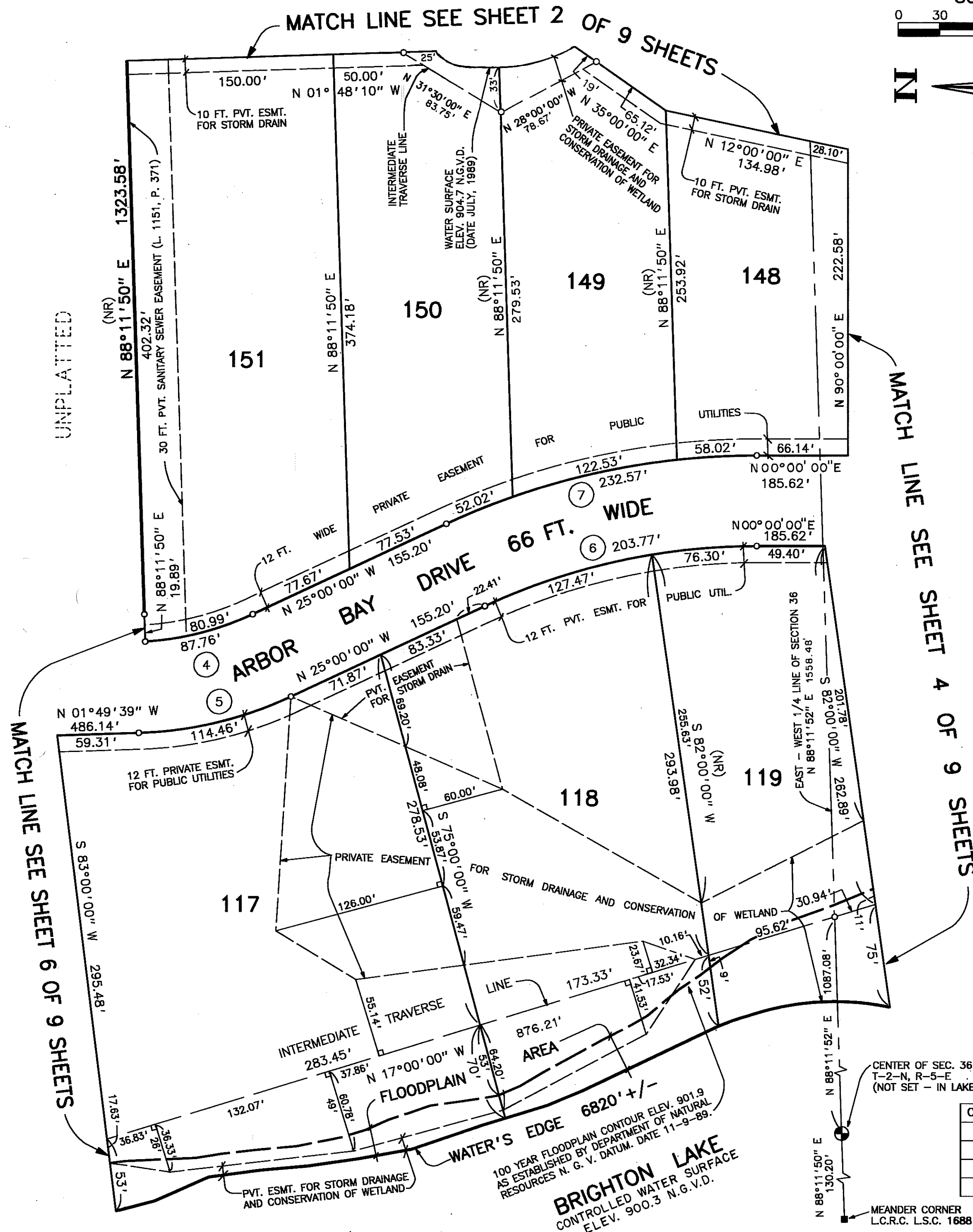
LIBER PAGE  
SHEET 5 OF 9 SHEETS



LOCATION MAP

SCALE 1" = 2000'

SCALE 1" = 60'



CERTIFIED TRUE COPY OF  
RECORDED PLAT  
BY DEPARTMENT OF COMMERCE

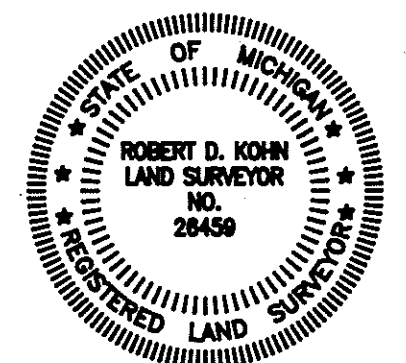
By *Maynard R. Dyer, P.S.*  
Manager  
Subdivision Control Unit

Date 3/25/96

## LEGEND

- ALL DIMENSIONS ARE GIVEN IN FEET.
- CURVILINEAR MEASUREMENTS ARE ARC DISTANCES.
- CONCRETE MONUMENTS HAVE BEEN PLACED AT ALL POINTS MARKED "o".
- CONCRETE MONUMENTS ARE STEEL BARS ONE-HALF (1/2) INCH IN DIAMETER AND THIRTY SIX (36) INCHES IN LENGTH, ENCASED IN A CONCRETE CYLINDER FOUR (4) INCHES IN DIAMETER, AND THIRTY SIX (36) INCHES IN LENGTH.
- LOT CORNERS HAVE BEEN MARKED WITH STEEL BARS ONE-HALF (1/2) INCH IN DIAMETER, AND EIGHTEEN (18) INCHES IN LENGTH.
- (R) INDICATES A RADIAL LINE.
- (NR) INDICATES A NON RADIAL LINE.
- ⊥ INDICATES A RIGHT ANGLE.
- BEARINGS ARE IN RELATION TO THE TRUE MERIDIAN, AS DETERMINED BY POLARIS OBSERVATION, DATE 11/13/1984.
- DENOTES FOUND MONUMENT 1/2 INCH STEEL BAR ENCASED IN 4 INCHES DIAMETER CONCRETE.

THIS PLAT IS SUBJECT TO RESTRICTIONS AS REQUIRED BY ACT 288 OF 1967 AS AMENDED ON CERTAIN LOTS WITH RESPECT TO THE REQUIREMENTS OF THE MICHIGAN DEPARTMENT OF NATURAL RESOURCES AND/OR THE MICHIGAN DEPARTMENT OF PUBLIC HEALTH, WHICH ARE RECORDED IN LIBER 2007, PAGES 632-671 OF RECORDS OF THIS COUNTY.



*Robert D. Kohn*

**Giffels-Webster Engineers Inc.**

ENGINEERS - SURVEYORS - PLANNERS  
2871 BOND STREET ROCHESTER HILLS MICHIGAN  
(810) 852-3100

## CURVE DATA

CURVE	ARC	RADIUS	CENTRAL ANGLE	CHORD	CHORD BEARING
4	87.76'	217.00'	23° 10' 21"	87.17'	N 13° 24' 50" W
5	114.46'	283.00'	23° 10' 21"	113.68'	N 13° 24' 50" W
6	203.77'	467.00'	25° 00' 00"	202.16'	N 12° 30' 00" W
7	232.57'	533.00'	25° 00' 00"	230.72'	N 12° 30' 00" W

CENTER OF SEC. 36  
T-2-N, R-5-E  
(NOT SET - IN LAKE)

MEANDER CORNER  
L.C.R.C. L.S.C. 1688

# PINE CREEK RIDGE SUBDIVISION NO. 4

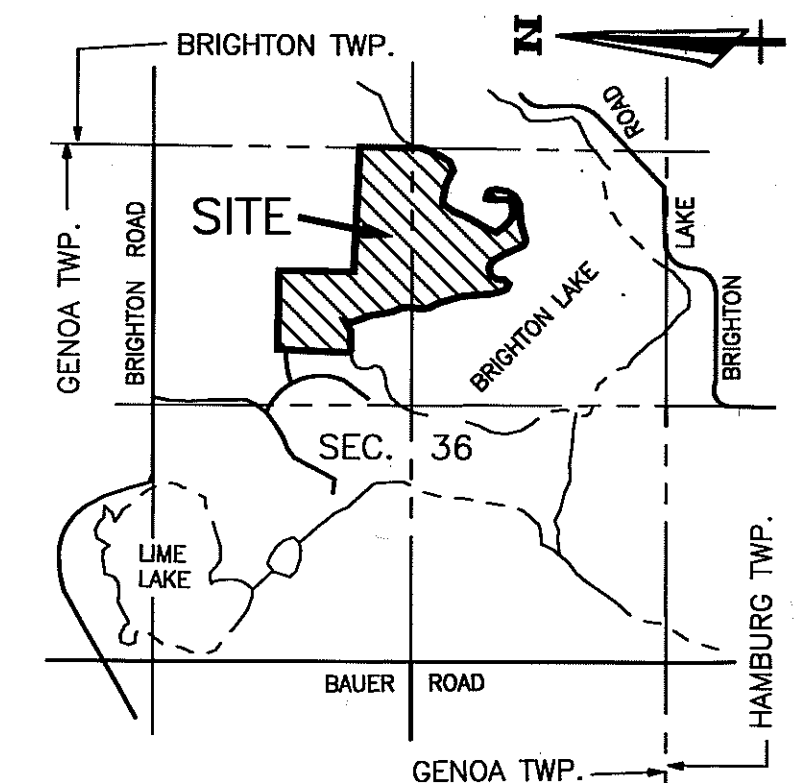
A PART OF THE NE. 1/4 & SE. 1/4 OF SECTION 36, T-2-N, R-5-E,  
GENOA TOWNSHIP, LIVINGSTON COUNTY, MICHIGAN

SCALE 1" = 60'



UNPLATTED

LIBER PAGE  
SHEET 6 OF 9 SHEETS



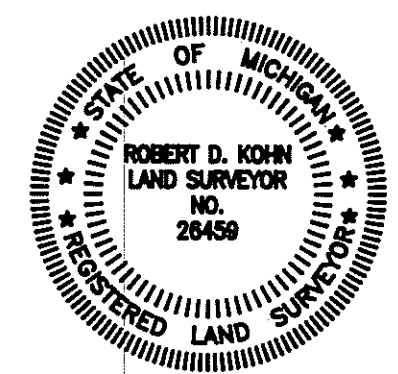
LOCATION MAP

SCALE 1" = 2000'

## LEGEND

1. ALL DIMENSIONS ARE GIVEN IN FEET.
2. CURVILINEAR MEASUREMENTS ARE ARC DISTANCES.
3. CONCRETE MONUMENTS HAVE BEEN PLACED AT ALL POINTS MARKED "o".
4. CONCRETE MONUMENTS ARE STEEL BARS ONE-HALF (1/2) INCH IN DIAMETER AND THIRTY SIX (36) INCHES IN LENGTH, ENCASED IN A CONCRETE CYLINDER FOUR (4) INCHES IN DIAMETER, AND THIRTY SIX (36) INCHES IN LENGTH.
5. LOT CORNERS HAVE BEEN MARKED WITH STEEL BARS ONE-HALF (1/2) INCH IN DIAMETER, AND EIGHTEEN (18) INCHES IN LENGTH.
6. (R) INDICATES A RADIAL LINE.
7. (NR) INDICATES A NON RADIAL LINE.
8. L INDICATES A RIGHT ANGLE.
9. BEARINGS ARE IN RELATION TO THE TRUE MERIDIAN, AS DETERMINED BY POLARIS OBSERVATION, DATE 11/13/1984.

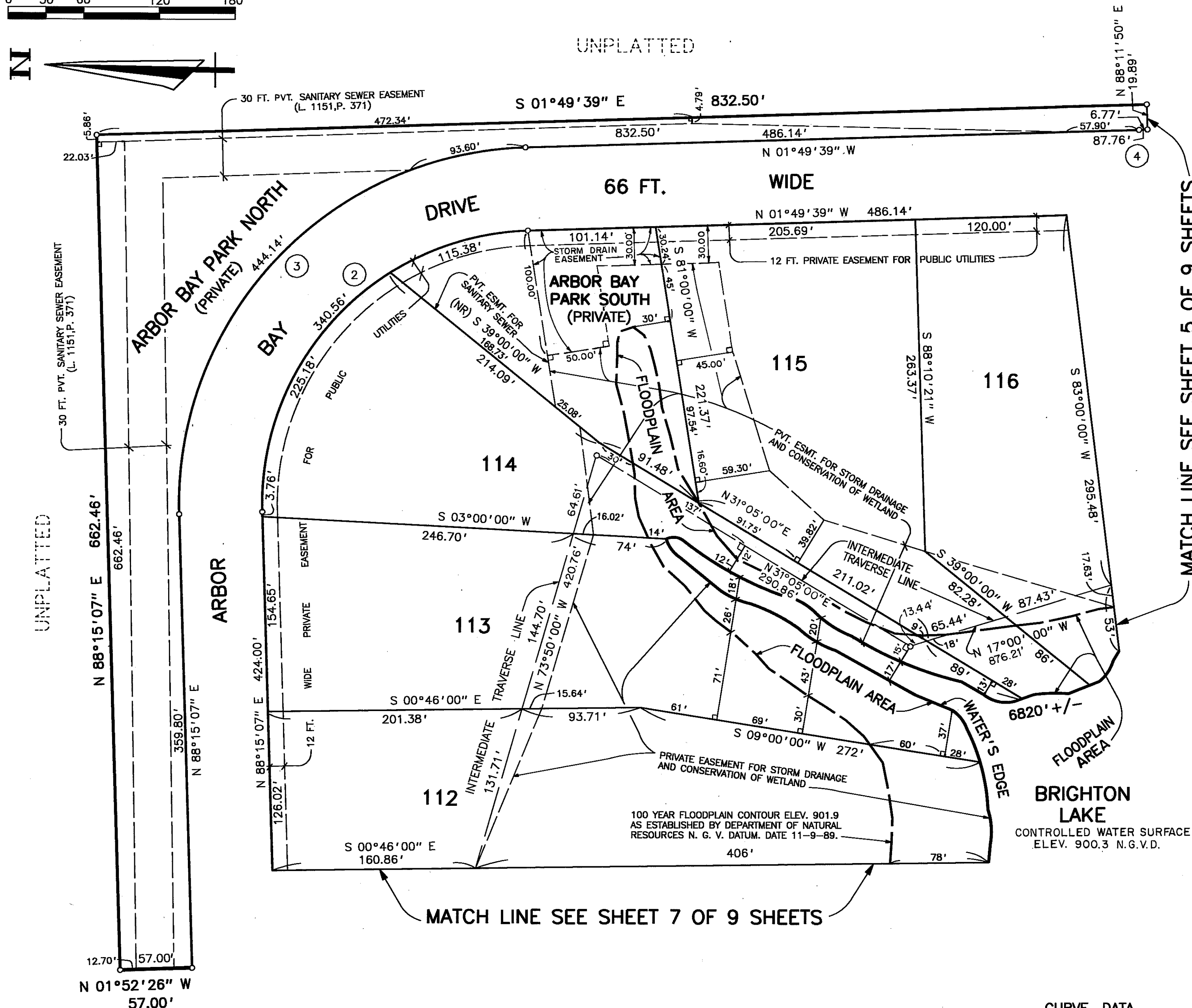
THIS PLAT IS SUBJECT TO RESTRICTIONS AS REQUIRED BY ACT 288 OF 1967 AS AMENDED ON CERTAIN LOTS WITH RESPECT TO THE REQUIREMENTS OF THE MICHIGAN DEPARTMENT OF NATURAL RESOURCES AND/OR THE MICHIGAN DEPARTMENT OF PUBLIC HEALTH, WHICH ARE RECORDED IN LIBER 632-671, PAGES 632-671 OF RECORDS OF THIS COUNTY.



*Robert D. Kohn*

**Giffels-Webster Engineers Inc.**

ENGINEERS - SURVEYORS - PLANNERS  
2871 BOND STREET, ROCHESTER HILLS, MICHIGAN  
(810) 852-3100



## CURVE DATA

CURVE	ARC	RADIUS	CENTRAL ANGLE	CHORD	CHORD BEARING
2	340.56'	217.00'	89° 55' 14"	306.67'	N 46° 47' 16" W
3	444.14'	283.00'	89° 55' 14"	399.94'	N 46° 47' 16" W
4	87.76'	217.00'	23° 10' 21"	87.17'	N 13° 24' 50" W

# PINE CREEK RIDGE SUBDIVISION NO. 4

A PART OF THE NE. 1/4 & SE. 1/4 OF SECTION 36, T-2-N, R-5-E,  
GENOA TOWNSHIP, LIVINGSTON COUNTY, MICHIGAN

SCALE 1" = 60'



ARC = 50.73', RAD. = 667.00'  
DELTA = 04°21'27"  
CHD. = S 89°34'10" E, 50.71'

UNPLATTED

ARC = 308.63', RAD. = 570.00'  
DELTA = 31°01'22"  
CHD. = N 77°05'52" E, 304.87'

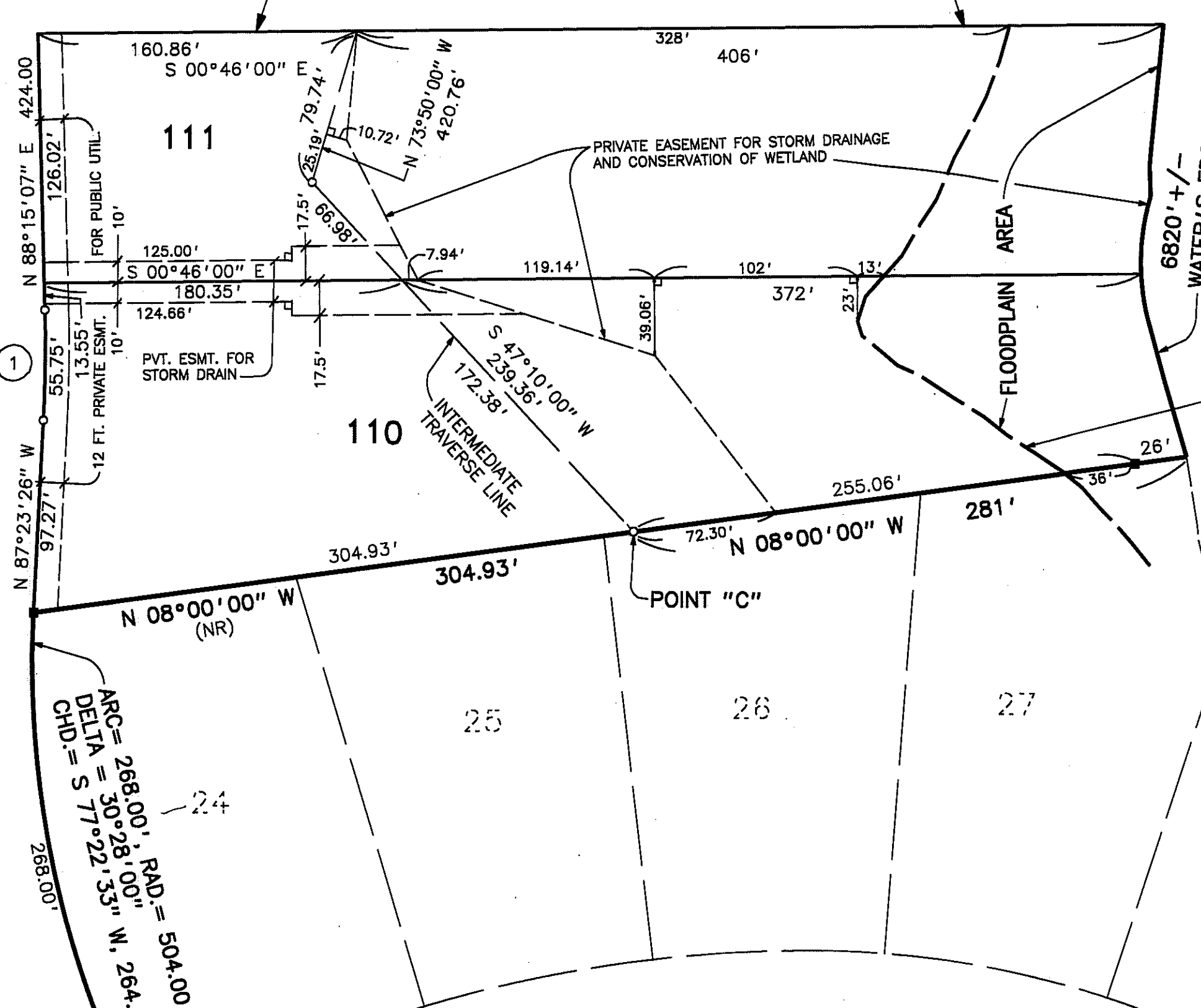
ARC = 66.23', RAD. = 676.00'  
DELTA = 05°36'49"  
CHD. = N 32°39'03" W, 66.21'

ARBOR BAY DRIVE 66 FT. WIDE

HIDDEN PINES DRIVE 66 FT WIDE

PINE CREEK RIDGE SUBDIVISION NO. 1  
LIBER 28, PAGES 15-25

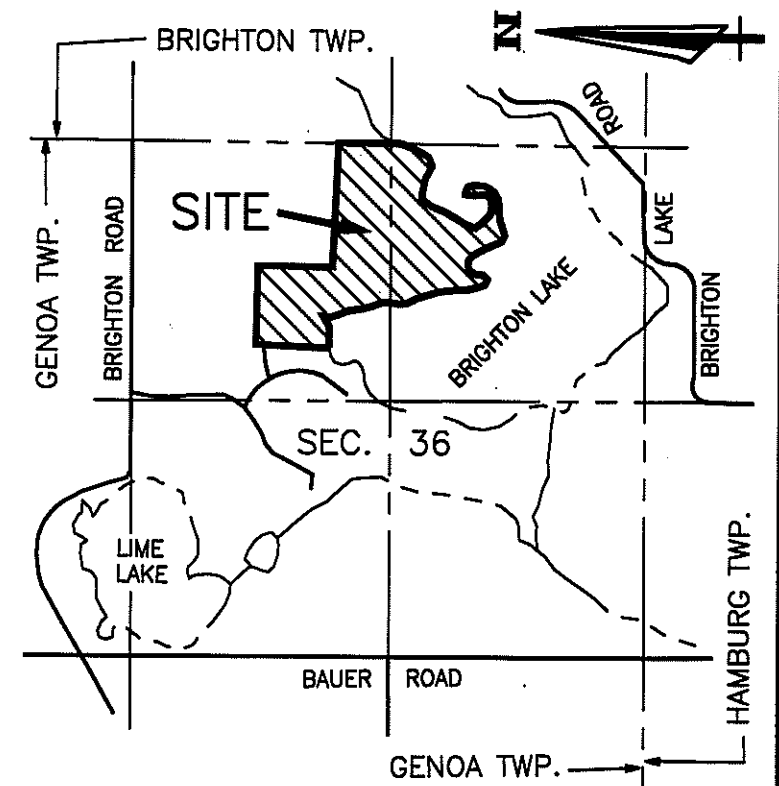
MATCH LINE SEE SHEET 6 OF 9 SHEETS



100 YEAR FLOODPLAIN CONTOUR ELEV. 901.9  
AS ESTABLISHED BY DEPARTMENT OF NATURAL  
RESOURCES N. G. V. DATUM, DATE 11-9-89.

BRIGHTON LAKE  
CONTROLLED WATER SURFACE  
ELEV. 900.3 N.G.V.D.

LIBER PAGE  
SHEET 7 OF 9 SHEETS



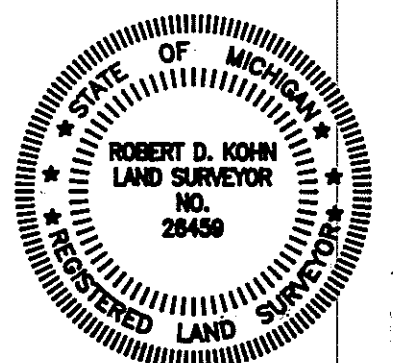
LOCATION MAP

SCALE 1" = 2000'

## LEGEND

1. ALL DIMENSIONS ARE GIVEN IN FEET.
2. CURVILINEAR MEASUREMENTS ARE ARC DISTANCES.
3. CONCRETE MONUMENTS HAVE BEEN PLACED AT ALL POINTS MARKED "o".
4. CONCRETE MONUMENTS ARE STEEL BARS ONE-HALF (1/2) INCH IN DIAMETER AND THIRTY SIX (36) INCHES IN LENGTH, ENCASED IN A CONCRETE CYLINDER FOUR (4) INCHES IN DIAMETER, AND THIRTY SIX (36) INCHES IN LENGTH.
5. LOT CORNERS HAVE BEEN MARKED WITH STEEL BARS ONE-HALF (1/2) INCH IN DIAMETER, AND EIGHTEEN (18) INCHES IN LENGTH.
6. (R) INDICATES A RADIAL LINE.
7. (NR) INDICATES A NON RADIAL LINE.
8. L INDICATES A RIGHT ANGLE.
9. BEARINGS ARE IN RELATION TO THE TRUE MERIDIAN, AS DETERMINED BY POLARIS OBSERVATION, DATE 11/13/1984.
10. ■ DENOTES FOUND MONUMENT 1/2 INCH STEEL BAR ENCASED IN 4 INCHES DIAMETER CONCRETE.

THIS PLAT IS SUBJECT TO RESTRICTIONS AS REQUIRED BY ACT 288 OF 1967 AS AMENDED ON CERTAIN LOTS WITH RESPECT TO THE REQUIREMENTS OF THE MICHIGAN DEPARTMENT OF NATURAL RESOURCES AND/OR THE MICHIGAN DEPARTMENT OF PUBLIC HEALTH, WHICH ARE RECORDED IN LIBER 2017, PAGES 632-671 OF RECORDS OF THIS COUNTY.



*Robert D. Kohn*

## CURVE DATA

CURVE	ARC	RADIUS	CENTRAL ANGLE	CHORD	CHORD BEARING
1	55.75'	733.00'	04° 21' 27"	55.73'	N 89° 34' 10" W

**Giffels-Webster Engineers Inc.**

ENGINEERS - SURVEYORS - PLANNERS  
2871 BOND STREET ROCHESTER HILLS MICHIGAN  
(810) 852-3100