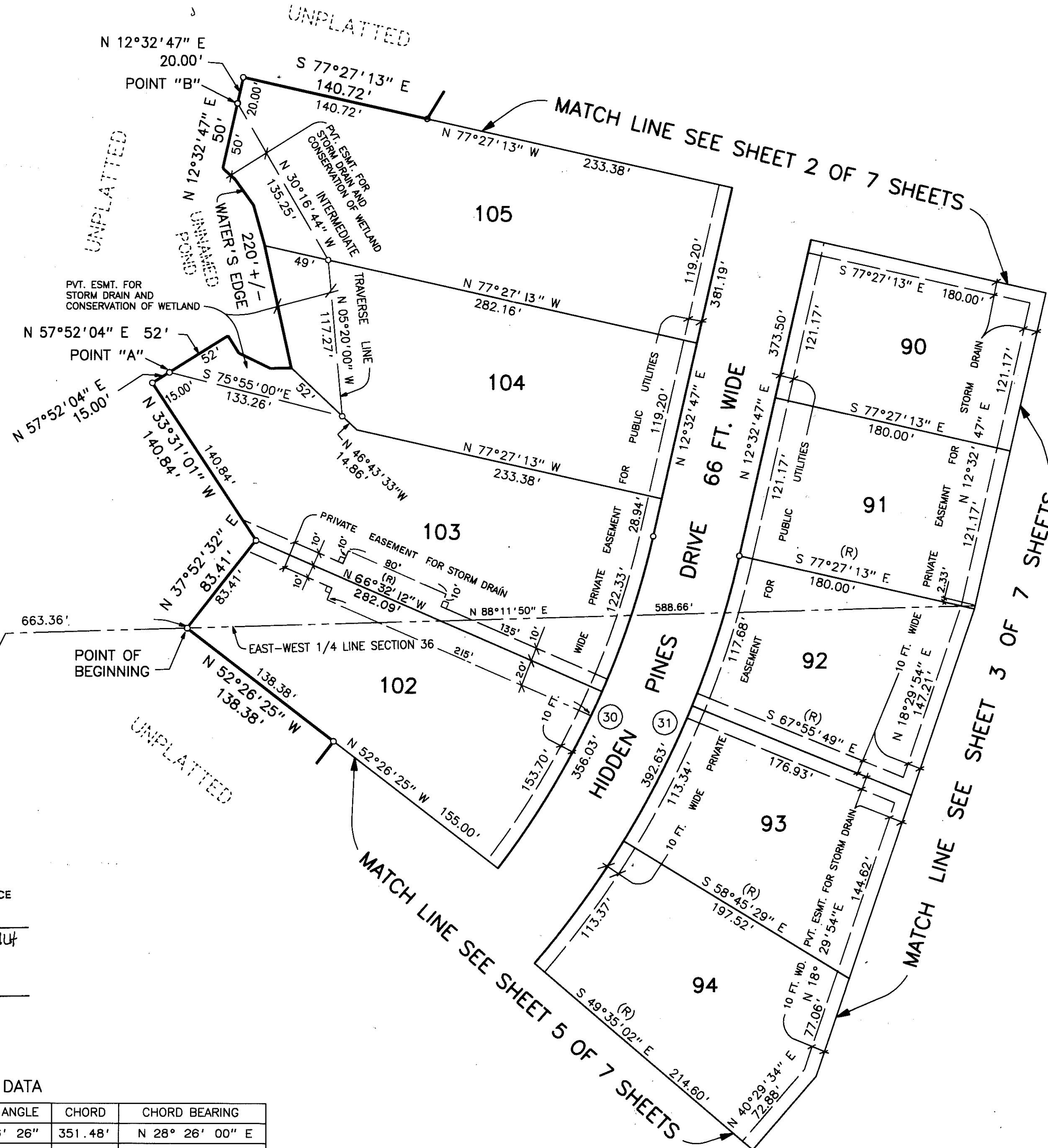


PINE CREEK RIDGE SUBDIVISION NO. 2

A PART OF THE NW. 1/4 & SW. 1/4 OF SECTION 36, T-2-N, R-5-E,
GENOA TOWNSHIP, LIVINGSTON COUNTY, MICHIGAN

SCALE 1" = 60'



WEST 1/4 COR.
OF SECTION 36
T-2-N, R-5-E.
L.C.R.C. L.S.C. 1688

CERTIFIED TRUE COPY OF
RECORDED PLAT
BY DEPARTMENT OF COMMERCE

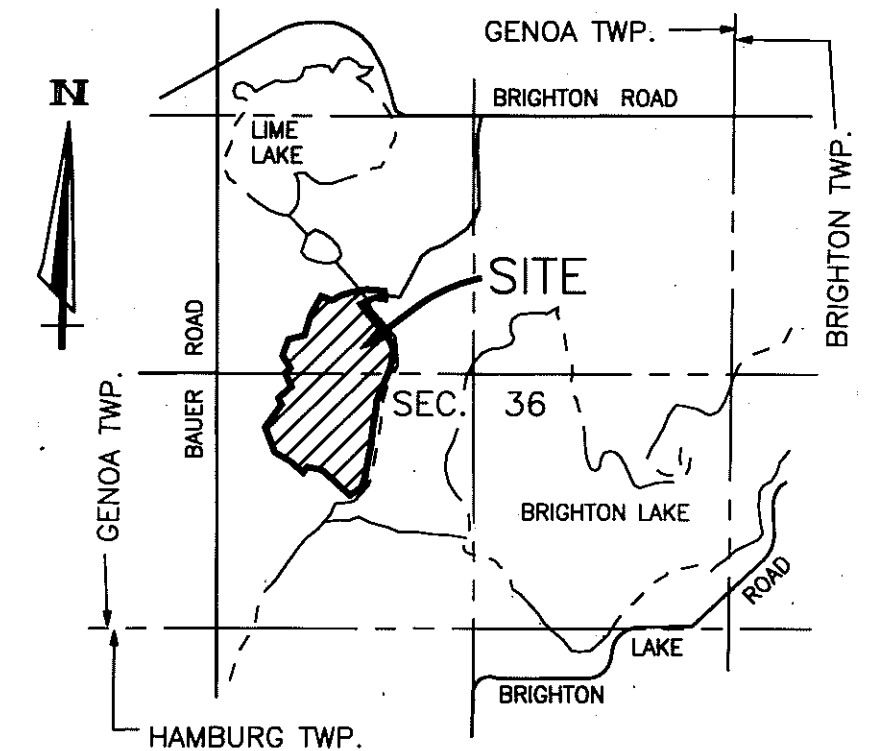
By Maynard R. Dyer, P.S.
Manager
Subdivision Control Unit

Date May 3, 1995

CURVE DATA

CURVE	ARC	RADIUS	CENTRAL ANGLE	CHORD	CHORD BEARING
30	356.03'	642.00'	31° 46' 26"	351.48'	N 28° 26' 00" E
31	392.63'	708.00'	31° 46' 26"	387.62'	N 28° 26' 00" E

LIBER PAGE
SHEET 1 OF 7 SHEETS



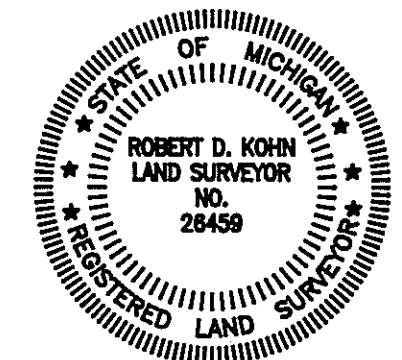
LOCATION MAP

SCALE 1" = 2000'

LEGEND

- ALL DIMENSIONS ARE GIVEN IN FEET.
- CURVILINEAR MEASUREMENTS ARE ARC DISTANCES.
- CONCRETE MONUMENTS HAVE BEEN PLACED AT ALL POINTS MARKED "o".
- CONCRETE MONUMENTS ARE STEEL BARS ONE-HALF (1/2) INCH IN DIAMETER AND THIRTY SIX (36) INCHES IN LENGTH, ENCASED IN A CONCRETE CYLINDER FOUR (4) INCHES IN DIAMETER, AND THIRTY SIX (36) INCHES IN LENGTH.
- LOT CORNERS HAVE BEEN MARKED WITH STEEL BARS ONE-HALF (1/2) INCH IN DIAMETER, AND EIGHTEEN (18) INCHES IN LENGTH.
- (R) INDICATES A RADIAL LINE.
- ⊥ INDICATES A RIGHT ANGLE.
- BEARINGS ARE IN RELATION TO THE TRUE MERIDIAN, AS DETERMINED BY POLARIS OBSERVATION, DATE 11/13/1984.

THIS PLAT IS SUBJECT TO RESTRICTIONS AS REQUIRED BY ACT 288 OF 1967 AS AMENDED ON CERTAIN LOTS WITH RESPECT TO THE REQUIREMENTS OF THE MICHIGAN DEPARTMENT OF NATURAL RESOURCES AND/OR THE MICHIGAN DEPARTMENT OF PUBLIC HEALTH, WHICH ARE RECORDED IN LIBER 1912, PAGES 580-624 OF RECORDS OF THIS COUNTY.



Robert D. Kohn

Giffels-Webster Engineers Inc.

ENGINEERS - SURVEYORS - PLANNERS
2871 BOND STREET ROCHESTER HILLS MICHIGAN
(810) 852-3100

PINE CREEK RIDGE SUBDIVISION NO. 2

A PART OF THE NW. 1/4 & SW. 1/4 OF SECTION 36, T-2-N, R-5-E,
GENOA TOWNSHIP, LIVINGSTON COUNTY, MICHIGAN

LIBER PAGE
SHEET 2 OF 7 SHEETS

SCALE 1" = 60'
0 30 60 120 180

N



ARC= 358.01', RAD.= 633.00'
DELTA = 32°24'17"
CHD.= N 87°45'07"E, 353.25'

FOUND MONUMENT

HIDDEN PINES
DR. 66 FT. WD.

PINE CREEK RIDGE SUBDIVISION NO. 2
(LIBER 28, PAGES 15-25)

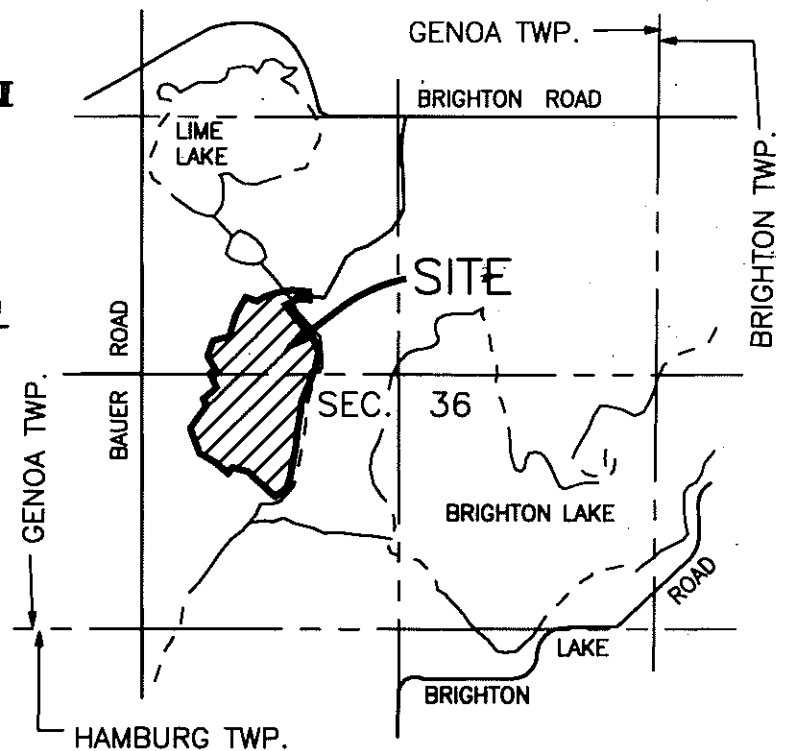
100 YEAR FLOODPLAIN CONTOUR AS
ESTABLISHED BY DEPARTMENT OF
NATURAL RESOURCES N. G. V. DATUM
DATE 11-9-89

LIME LAKE
WATER'S EDGE

FLOODPLAIN
ELEV. 899.0

FLOODPLAIN
ELEV. 898.5

FLOODPLAIN
ELEV. 897.7



LOCATION MAP

SCALE 1" = 2000'

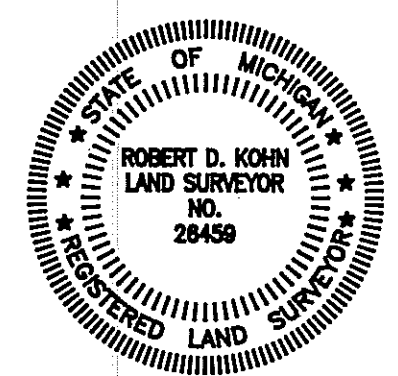
LEGEND

1. ALL DIMENSIONS ARE GIVEN IN FEET.
2. CURVILINEAR MEASUREMENTS ARE ARC DISTANCES.
3. CONCRETE MONUMENTS HAVE BEEN PLACED AT ALL POINTS MARKED "o".
4. CONCRETE MONUMENTS ARE STEEL BARS ONE-HALF (1/2) INCH IN DIAMETER AND THIRTY SIX (36) INCHES IN LENGTH, ENCASED IN A CONCRETE CYLINDER FOUR (4) INCHES IN DIAMETER, AND THIRTY SIX (36) INCHES IN LENGTH.
5. LOT CORNERS HAVE BEEN MARKED WITH STEEL BARS ONE-HALF (1/2) INCH IN DIAMETER, AND EIGHTEEN (18) INCHES IN LENGTH.
6. (R) INDICATES A RADIAL LINE.
7. L INDICATES A RIGHT ANGLE.
8. BEARINGS ARE IN RELATION TO THE TRUE MERIDIAN, AS DETERMINED BY POLARIS OBSERVATION, DATE 11/13/1984.

CURVE DATA

CURVE	ARC	RADIUS	CENTRAL ANGLE	CHORD	CHORD BEARING
1	93.04'	367.00'	14° 31' 34"	92.80'	N 66° 02' 27" W
2	32.86'	20.00'	94° 08' 59"	29.29'	N 59° 37' 16" E
3	103.47'	293.00'	20° 14' 02"	102.94'	N 22° 39' 48" E
4	78.83'	567.00'	07° 57' 58"	78.77'	N 75° 31' 57" E
5	233.76'	227.00'	59° 00' 11"	223.57'	N 42° 02' 52" E
6	29.97'	20.00'	85° 51' 01"	27.24'	N 30° 22' 44" W
7	109.78'	433.00'	14° 31' 34"	109.48'	N 66° 02' 27" W
8	29.97'	20.00'	85° 51' 01"	27.24'	N 30° 22' 44" W
9	32.86'	20.00'	94° 08' 59"	29.29'	N 59° 37' 16" E
10	497.02'	317.00'	89° 50' 00"	447.65'	N 28° 23' 14" W
11	600.50'	383.00'	89° 50' 00"	540.86'	N 28° 23' 14" W
32	41.85'	567.00'	04° 13' 43"	41.84'	N 81° 37' 47" E

THIS PLAT IS SUBJECT TO RESTRICTIONS AS
REQUIRED BY ACT 288 OF 1967 AS AMENDED
ON CERTAIN LOTS WITH RESPECT TO THE
REQUIREMENTS OF THE MICHIGAN DEPARTMENT OF
NATURAL RESOURCES AND/OR THE MICHIGAN
DEPARTMENT OF PUBLIC HEALTH, WHICH ARE
RECORDED IN LIBER 1912, PAGES 580-624
OF RECORDS OF THIS COUNTY.



Robert D. Kohn

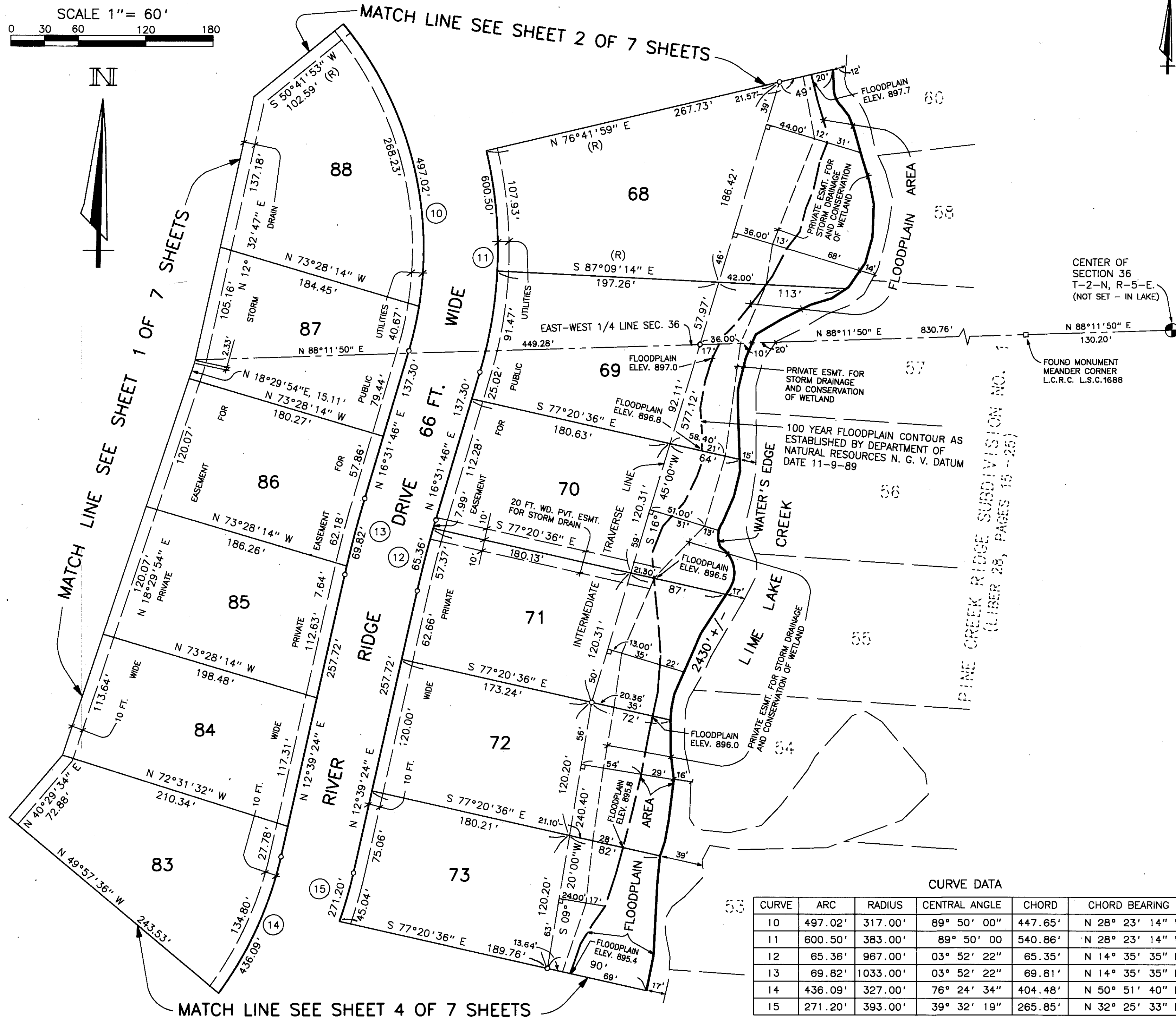
Giffels-Webster Engineers Inc.

ENGINEERS - SURVEYORS - PLANNERS
2871 BOND STREET ROCHESTER HILLS MICHIGAN
(810) 852-3100

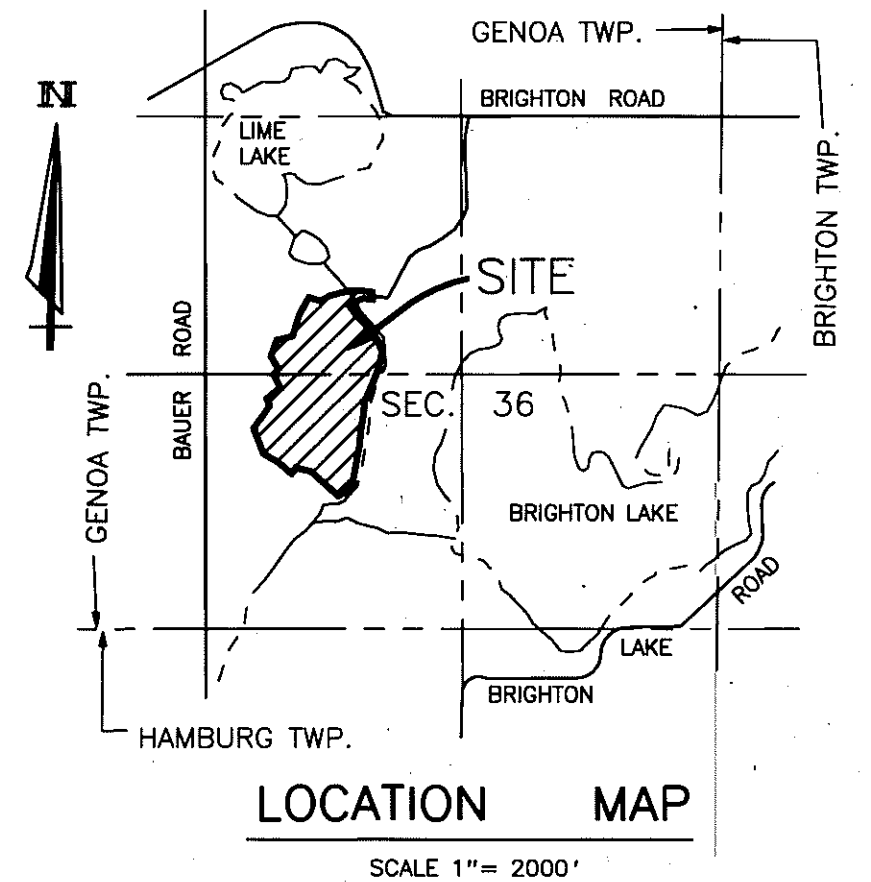
PINE CREEK RIDGE SUBDIVISION NO. 2

A PART OF THE NW. 1/4 & SW. 1/4 OF SECTION 36, T-2-N, R-5-E,
GENOA TOWNSHIP, LIVINGSTON COUNTY, MICHIGAN

SCALE 1" = 60'



LIBER PAGE
SHEET 3 OF 7 SHEETS



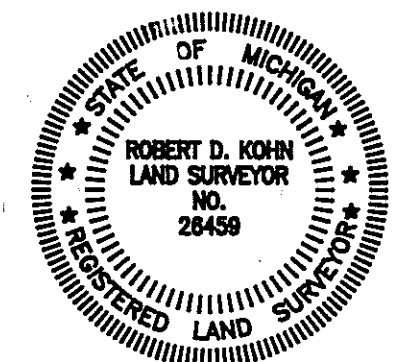
CENTER OF
SECTION 36
T-2-N, R-5-E.
(NOT SET - IN LAKE)

FOUND MONUMENT
MEANDER CORNER
L.C.R.C. L.S.C.1688

LEGEND

- ALL DIMENSIONS ARE GIVEN IN FEET.
- CURVILINEAR MEASUREMENTS ARE ARC DISTANCES.
- CONCRETE MONUMENTS HAVE BEEN PLACED AT ALL POINTS MARKED "O".
- CONCRETE MONUMENTS ARE STEEL BARS ONE-HALF (1/2) INCH IN DIAMETER AND THIRTY SIX (36) INCHES IN LENGTH, ENCASED IN A CONCRETE CYLINDER FOUR (4) INCHES IN DIAMETER, AND THIRTY SIX (36) INCHES IN LENGTH.
- LOT CORNERS HAVE BEEN MARKED WITH STEEL BARS ONE-HALF (1/2) INCH IN DIAMETER, AND EIGHTEEN (18) INCHES IN LENGTH.
- (R) INDICATES A RADIAL LINE.
- ⊥ INDICATES A RIGHT ANGLE.
- BEARINGS ARE IN RELATION TO THE TRUE MERIDIAN, AS DETERMINED BY POLARIS OBSERVATION, DATE 11/13/1984.

THIS PLAT IS SUBJECT TO RESTRICTIONS AS REQUIRED BY ACT 288 OF 1967 AS AMENDED ON CERTAIN LOTS WITH RESPECT TO THE REQUIREMENTS OF THE MICHIGAN DEPARTMENT OF NATURAL RESOURCES AND/OR THE MICHIGAN DEPARTMENT OF PUBLIC HEALTH, WHICH ARE RECORDED IN LIBER 1913, PAGES 330-624 OF RECORDS OF THIS COUNTY.



Robert D. Kohn

Giffels-Webster Engineers Inc.

ENGINEERS - SURVEYORS - PLANNERS
2871 BOND STREET ROCHESTER HILLS MICHIGAN
(810) 852-3100

CURVE DATA

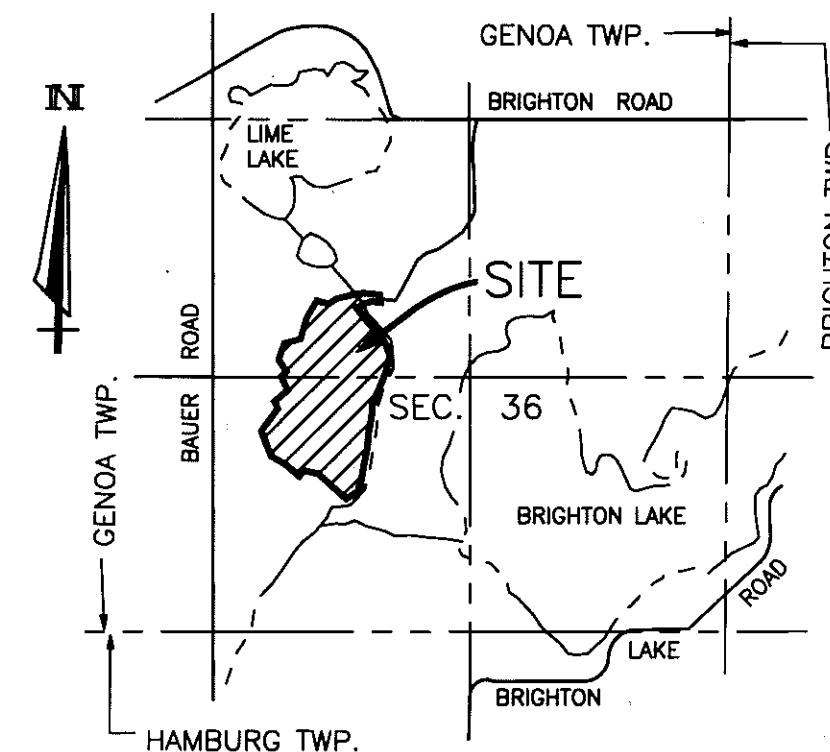
CURVE	ARC	RADIUS	CENTRAL ANGLE	CHORD	CHORD BEARING
10	497.02'	317.00'	89° 50' 00"	447.65'	N 28° 23' 14" W
11	600.50'	383.00'	89° 50' 00"	540.86'	N 28° 23' 14" W
12	65.36'	967.00'	03° 52' 22"	65.35'	N 14° 35' 35" E
13	69.82'	1033.00'	03° 52' 22"	69.81'	N 14° 35' 35" E
14	436.09'	327.00'	76° 24' 34"	404.48'	N 50° 51' 40" E
15	271.20'	393.00'	39° 32' 19"	265.85'	N 32° 25' 33" E

PINE CREEK RIDGE SUBDIVISION NO. 2

A PART OF THE NW. 1/4 & SW. 1/4 OF SECTION 36, T-2-N, R-5-E,
GENOA TOWNSHIP, LIVINGSTON COUNTY, MICHIGAN

LIBER PAGE
SHEET 4 OF 7 SHEETS

SCALE 1" = 60'



LOCATION MAP

SCALE 1" = 2000'

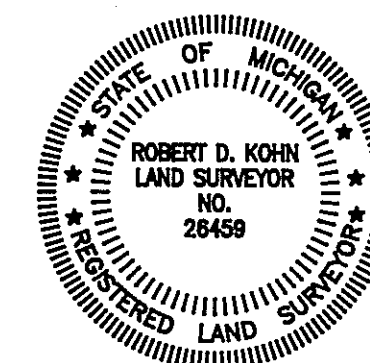
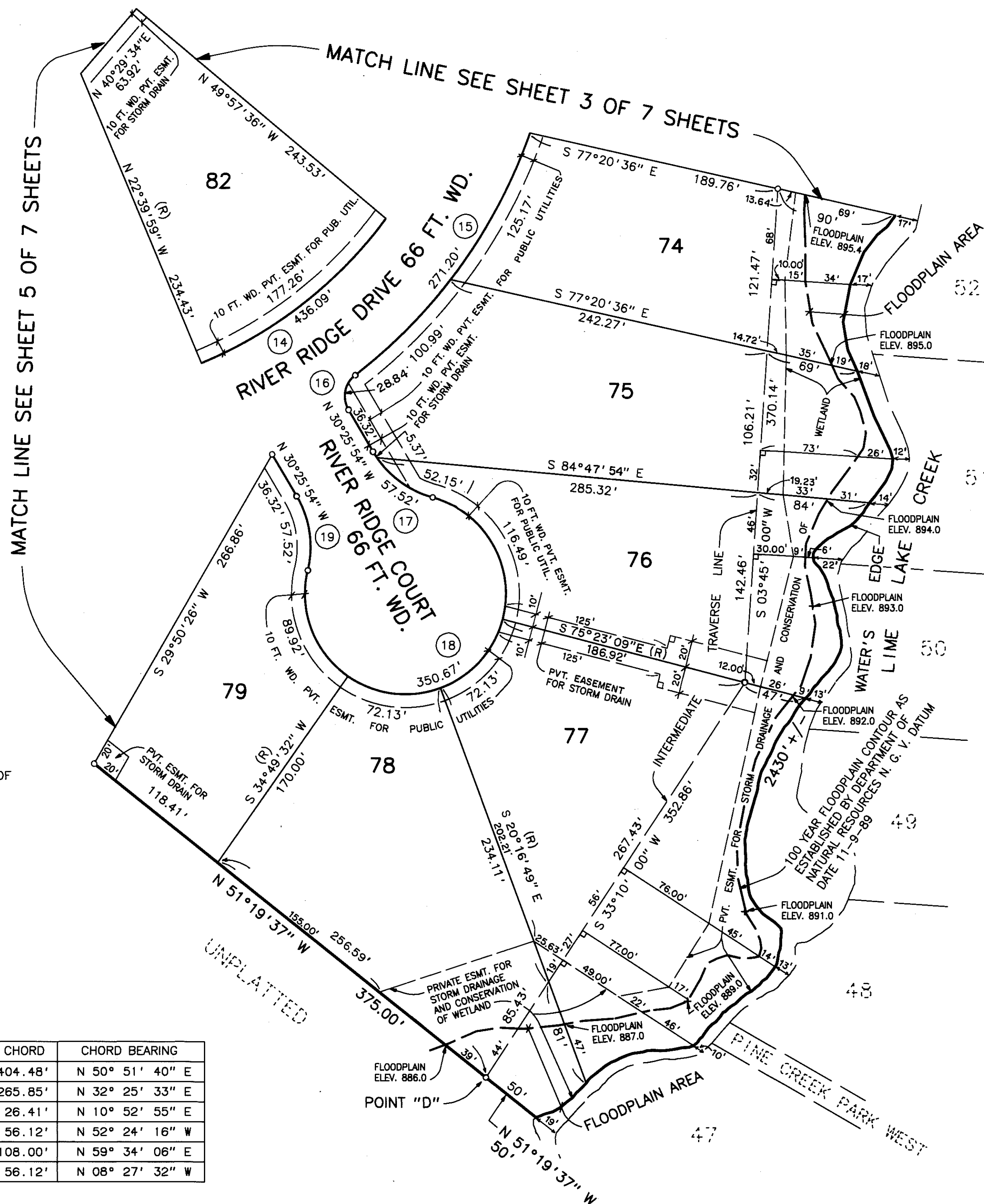
LEGEND

1. ALL DIMENSIONS ARE GIVEN IN FEET.
2. CURVILINEAR MEASUREMENTS ARE ARC DISTANCES.
3. CONCRETE MONUMENTS HAVE BEEN PLACED AT ALL POINTS MARKED "O".
4. CONCRETE MONUMENTS ARE STEEL BARS ONE-HALF (1/2) INCH IN DIAMETER AND THIRTY SIX (36) INCHES IN LENGTH, ENCASED IN A CONCRETE CYLINDER FOUR (4) INCHES IN DIAMETER, AND THIRTY SIX (36) INCHES IN LENGTH.
5. LOT CORNERS HAVE BEEN MARKED WITH STEEL BARS ONE-HALF (1/2) INCH IN DIAMETER, AND EIGHTEEN (18) INCHES IN LENGTH.
6. (R) INDICATES A RADIAL LINE.
7. L INDICATES A RIGHT ANGLE.
8. BEARINGS ARE IN RELATION TO THE TRUE MERIDIAN, AS DETERMINED BY POLARIS OBSERVATION, DATE 11/13/1984.

THIS PLAT IS SUBJECT TO RESTRICTIONS AS REQUIRED BY ACT 288 OF 1967 AS AMENDED ON CERTAIN LOTS WITH RESPECT TO THE REQUIREMENTS OF THE MICHIGAN DEPARTMENT OF NATURAL RESOURCES AND/OR THE MICHIGAN DEPARTMENT OF PUBLIC HEALTH, WHICH ARE RECORDED IN LIBER 1912, PAGES 580-624 OF RECORDS OF THIS COUNTY.

CURVE DATA

CURVE	ARC	RADIUS	CENTRAL ANGLE	CHORD	CHORD BEARING
14	436.09'	327.00'	76° 24' 34"	404.48'	N 50° 51' 40" E
15	271.20'	393.00'	39° 32' 19"	265.85'	N 32° 25' 33" E
16	28.84'	20.00'	82° 37' 37"	26.41'	N 10° 52' 55" E
17	57.52'	75.00'	43° 56' 44"	56.12'	N 52° 24' 16" W
18	350.67'	75.00'	267° 53' 28"	108.00'	N 59° 34' 06" E
19	57.52'	75.00'	43° 56' 44"	56.12'	N 08° 27' 32" W



Robert D. Kohn

Giffels-Webster Engineers Inc.

ENGINEERS - SURVEYORS - PLANNERS
2871 BOND STREET ROCHESTER HILLS MICHIGAN
(810) 852-3100

PINE CREEK RIDGE SUBDIVISION NO. 2

A PART OF THE NW. 1/4 & SW. 1/4 OF SECTION 36, T-2-N, R-5-E,
GENOA TOWNSHIP, LIVINGSTON COUNTY, MICHIGAN

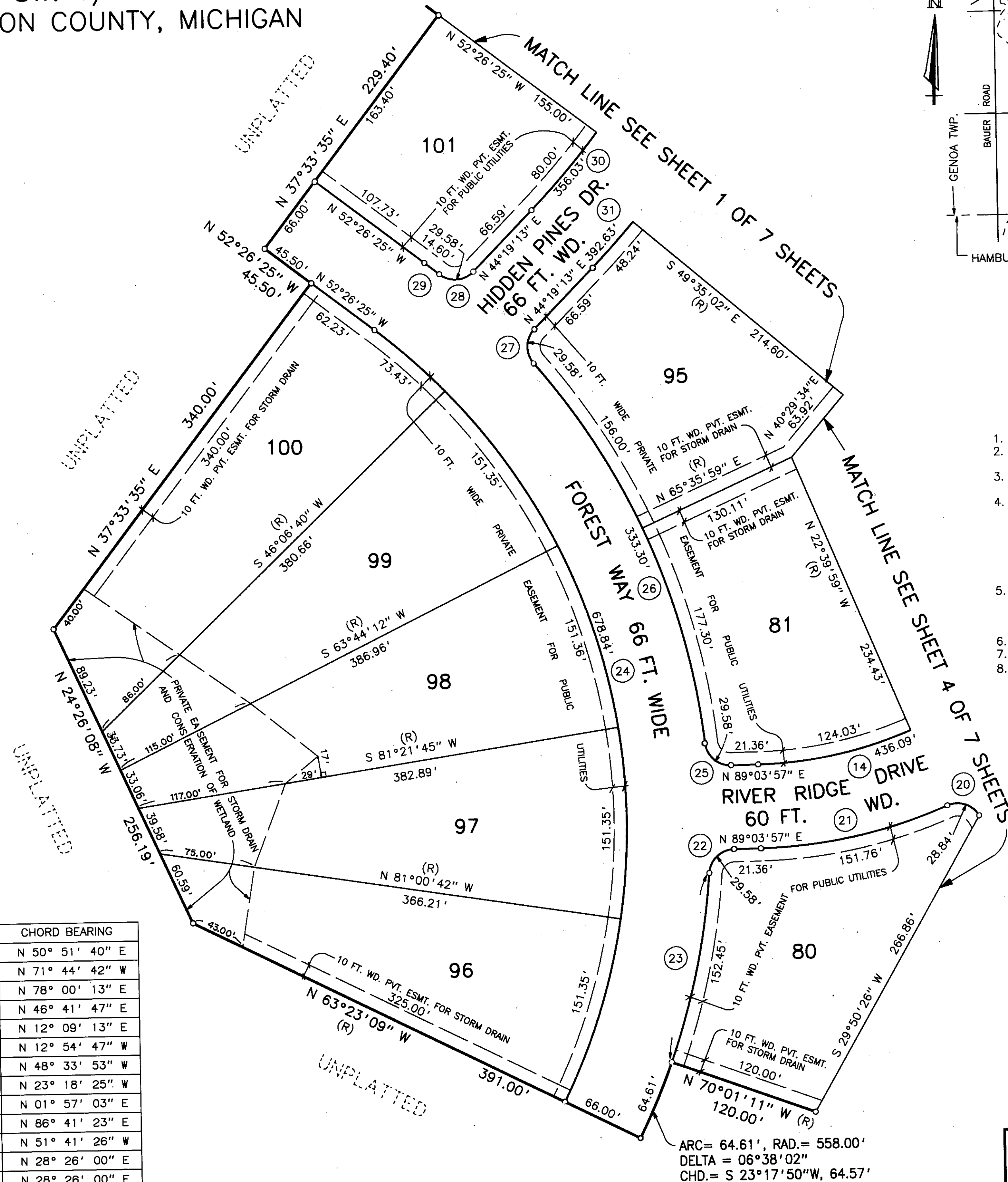
SCALE 1" = 60'



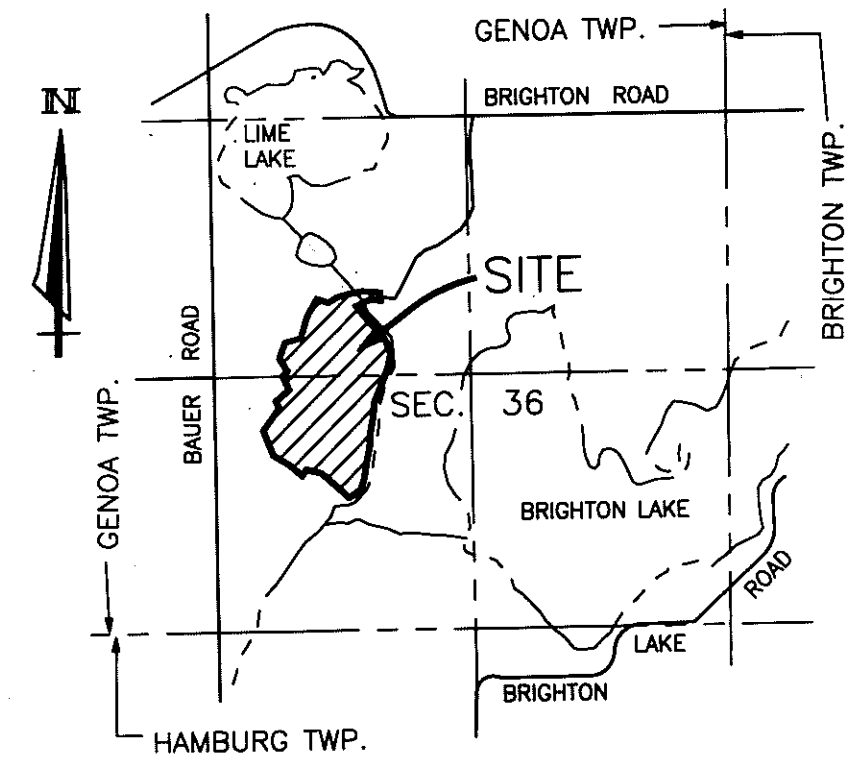
THIS PLAT IS SUBJECT TO RESTRICTIONS AS REQUIRED BY ACT 288 OF 1967 AS AMENDED ON CERTAIN LOTS WITH RESPECT TO THE REQUIREMENTS OF THE MICHIGAN DEPARTMENT OF NATURAL RESOURCES AND/OR THE MICHIGAN DEPARTMENT OF PUBLIC HEALTH, WHICH ARE RECORDED IN LIBER 912, PAGES 580-604 OF RECORDS OF THIS COUNTY.

CURVE DATA

CURVE	ARC	RADIUS	CENTRAL ANGLE	CHORD	CHORD BEARING
14	436.09'	327.00'	76° 24' 34"	404.48'	N 50° 51' 40" E
20	28.84'	20.00'	82° 37' 37"	26.41'	N 71° 44' 42" W
21	151.76'	393.00'	22° 07' 28"	150.81'	N 78° 00' 13" E
22	29.58'	20.00'	84° 44' 20"	26.96'	N 46° 41' 47" E
23	152.45'	558.00'	15° 39' 12"	151.97'	N 12° 09' 13" E
24	678.84'	492.00'	79° 03' 16"	626.26'	N 12° 54' 47" W
25	29.58'	20.00'	84° 44' 20"	26.96'	N 48° 33' 53" W
26	333.30'	558.00'	34° 13' 24"	328.37'	N 23° 18' 25" W
27	29.58'	20.00'	84° 44' 20"	26.96'	N 01° 57' 03" E
28	29.58'	20.00'	84° 44' 20"	26.96'	N 86° 41' 23" E
29	14.60'	558.00'	01° 29' 58"	14.60'	N 51° 41' 26" W
30	356.03'	642.00'	31° 46' 26"	351.48'	N 28° 26' 00" E
31	392.63'	708.00'	31° 46' 26"	387.62'	N 28° 26' 00" E



LIBER PAGE
SHEET 5 OF 7 SHEETS

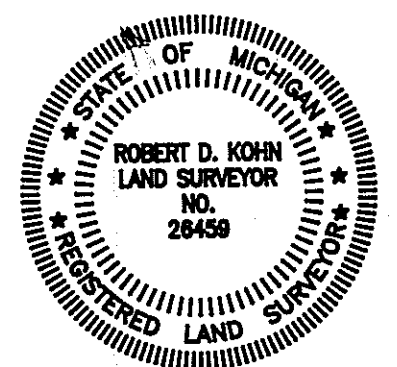


LOCATION MAP

SCALE 1" = 2000'

LEGEND

- ALL DIMENSIONS ARE GIVEN IN FEET.
- CURVILINEAR MEASUREMENTS ARE ARC DISTANCES.
- CONCRETE MONUMENTS HAVE BEEN PLACED AT ALL POINTS MARKED "o".
- CONCRETE MONUMENTS ARE STEEL BARS ONE-HALF (1/2) INCH IN DIAMETER AND THIRTY SIX (36) INCHES IN LENGTH, ENCASED IN A CONCRETE CYLINDER FOUR (4) INCHES IN DIAMETER, AND THIRTY SIX (36) INCHES IN LENGTH.
- LOT CORNERS HAVE BEEN MARKED WITH STEEL BARS ONE-HALF (1/2) INCH IN DIAMETER, AND EIGHTEEN (18) INCHES IN LENGTH.
- (R) INDICATES A RADIAL LINE.
- L INDICATES A RIGHT ANGLE.
- BEARINGS ARE IN RELATION TO THE TRUE MERIDIAN, AS DETERMINED BY POLARIS OBSERVATION, DATE 11/13/1984.



Robert D. Kohn

Giffels-Webster Engineers Inc.

ENGINEERS - SURVEYORS - PLANNERS
2871 BOND STREET ROCHESTER HILLS MICHIGAN
(810) 852-3100

ARC= 64.61', RAD.= 558.00'
DELTA = 06°38'02"
CHD.= S 23°17'50"W, 64.57'