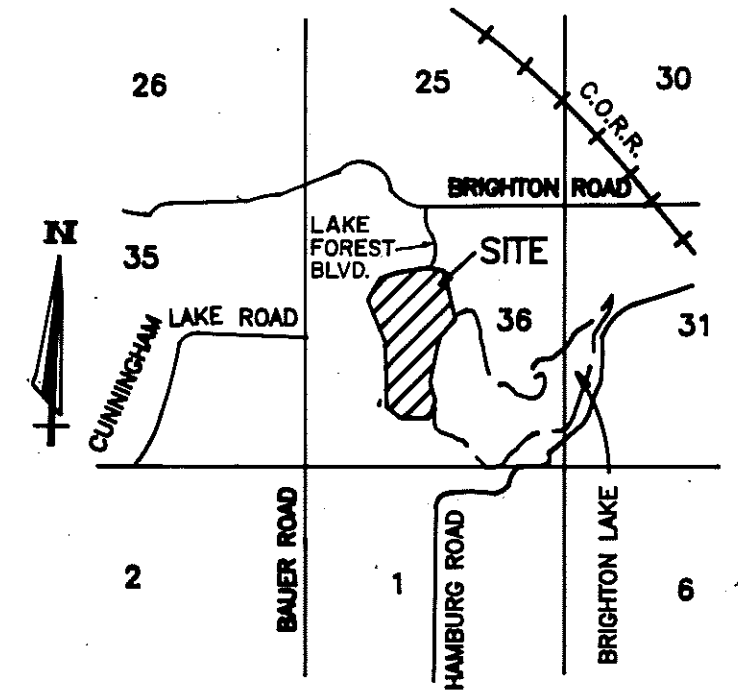
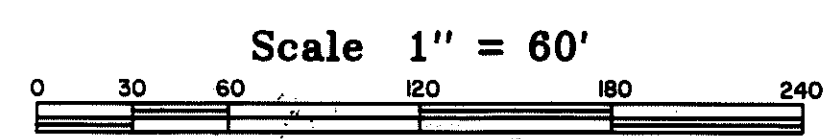
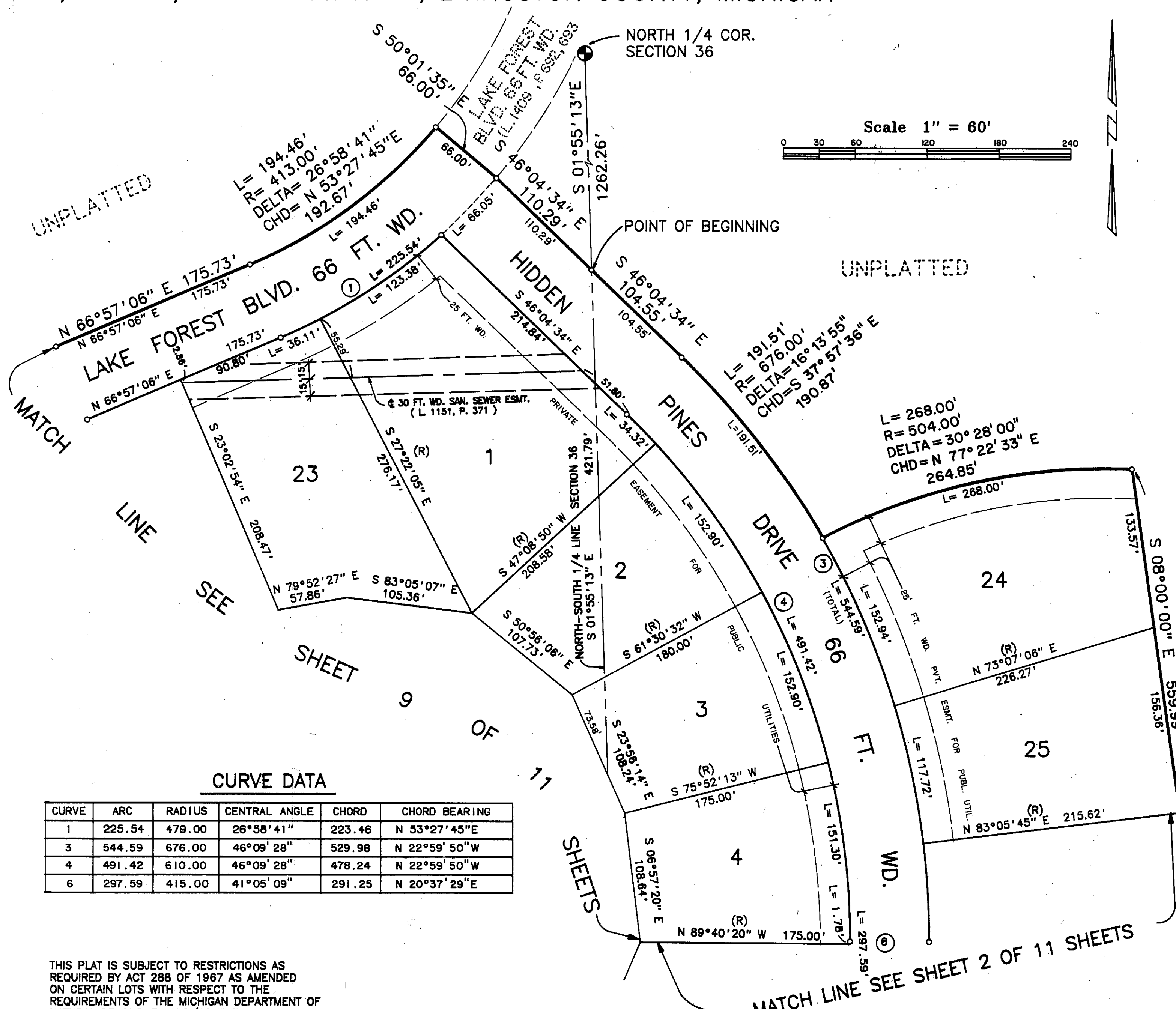


PINE CREEK RIDGE SUBDIVISION NO. 1

PART OF THE NW.1/4, SW.1/4 & THE NORTHEAST 1/4 OF SECTION 36,
T. 2 N., R. 5 E., GENOA TOWNSHIP, LIVINGSTON COUNTY, MICHIGAN

LIBER PAGE
SHEET 1 OF 11 SHEETS



LOCATION MAP
NO SCALE

LEGEND

1. ALL DIMENSIONS ARE GIVEN IN FEET.
2. L= INDICATES ARC LENGTH ALONG A CURVE.
3. CONCRETE MONUMENTS HAVE BEEN PLACED AT ALL POINTS MARKED "O".
4. CONCRETE MONUMENTS ARE STEEL BARS ONE-HALF (1/2) INCH IN DIAMETER AND THIRTY SIX (36) INCHES IN LENGTH, ENCASED IN A CONCRETE CYLINDER FOUR (4) INCHES IN DIAMETER, AND THIRTY SIX (36) INCHES IN LENGTH.
5. LOT CORNERS HAVE BEEN MARKED WITH STEEL BARS ONE-HALF (1/2) INCH IN DIAMETER, AND EIGHTEEN (18) INCHES IN LENGTH.
6. (R) INDICATES A RADIAL LINE.
7. L= INDICATES A RIGHT ANGLE.
8. BEARINGS ARE IN RELATION TO THE TRUE MERIDIAN, AS DETERMINED BY POLARIS OBSERVATION, DATE 11/13/84.

CURVE DATA

CURVE	ARC	RADIUS	CENTRAL ANGLE	CHORD	CHORD BEARING
1	225.54	479.00	26°58'41"	223.46	N 53°27'45"E
3	544.59	676.00	46°09'28"	529.98	N 22°59'50"W
4	491.42	610.00	46°09'28"	478.24	N 22°59'50"W
6	297.59	415.00	41°05'09"	291.25	N 20°37'29"E

THIS PLAT IS SUBJECT TO RESTRICTIONS AS REQUIRED BY ACT 288 OF 1967 AS AMENDED ON CERTAIN LOTS WITH RESPECT TO THE REQUIREMENTS OF THE MICHIGAN DEPARTMENT OF NATURAL RESOURCES AND/OR THE MICHIGAN DEPARTMENT OF PUBLIC HEALTH, WHICH ARE RECORDED IN LIBER 141,2, PAGES 106-154 OF RECORDS OF THIS COUNTY.



Robert D. Kohn
Giffels-Webster Engineers Inc.
ENGINEERS - SURVEYORS - PLANNERS
2871 BOND STREET, AUBURN HILLS, MICHIGAN
(313) 852-3100

Lib 28 Page 15

PINE CREEK RIDGE SUBDIVISION NO. 1

PART OF THE NW.1/4, SW.1/4 & THE NORTHEAST 1/4 OF SECTION 36,
T. 2 N., R. 5 E., GENOA TOWNSHIP, LIVINGSTON COUNTY, MICHIGAN

LIBER PAGE
SHEET 2 OF 11 SHEETS

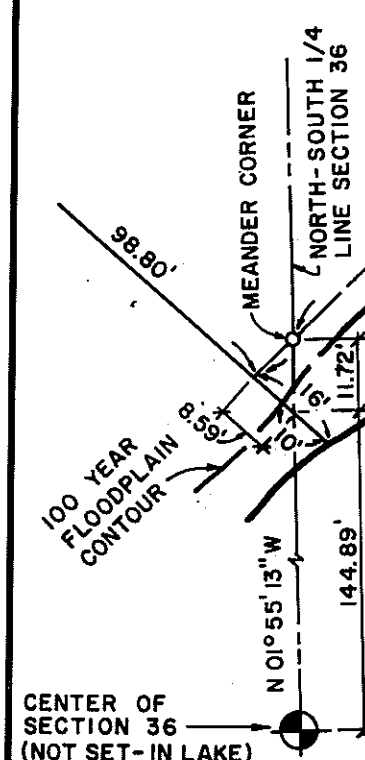
Scale 1" = 60'



MATCH LINE SEE SHEET 1 OF 11 SHEETS

MATCH LINE SEE SHEET 9 OF 11 SHEETS

MATCH LINE SEE SHEET 3 OF 11 SHEETS



DETAIL
NO SCALE

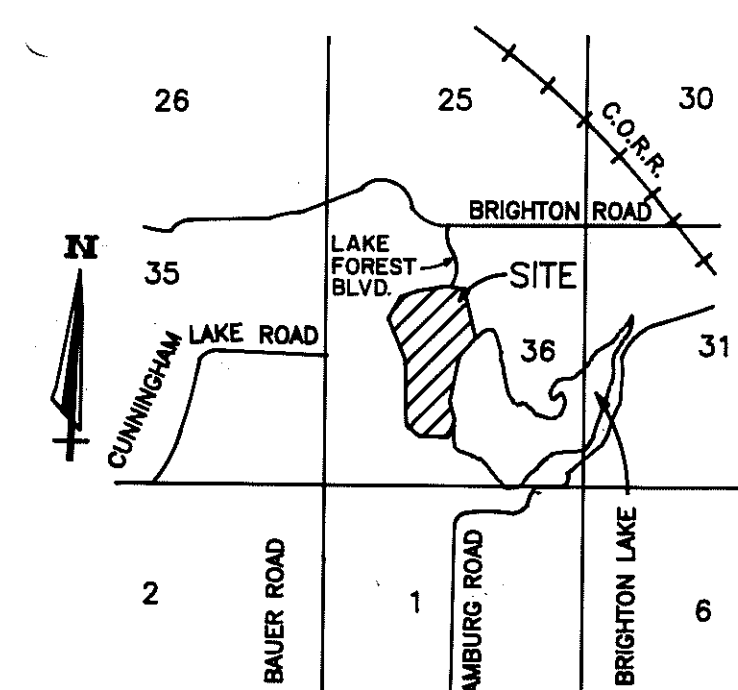
CENTER OF
SECTION 36
(IN LAKE - NOT SET)

SEE DETAIL

BRIGHTON

CURVE DATA

CURVE	ARC	RADIUS	CENTRAL ANGLE	CHORD	CHORD BEARING
3	544.59	676.00	46° 09' 28"	529.98	N 22° 59' 50" W
5	344.92	481.00	41° 05' 09"	337.57	N 20° 37' 29" E
6	297.59	415.00	41° 05' 09"	291.25	N 20° 37' 29" E
7	740.53	571.00	74° 18' 23"	689.71	N 78° 19' 15" E
8	654.93	505.00	74° 18' 23"	609.99	N 78° 19' 15" E
9	85.02	300.00	16° 14' 15"	84.74	N 63° 24' 45" W
10	103.72	366.00	16° 14' 15"	103.38	N 63° 24' 45" W

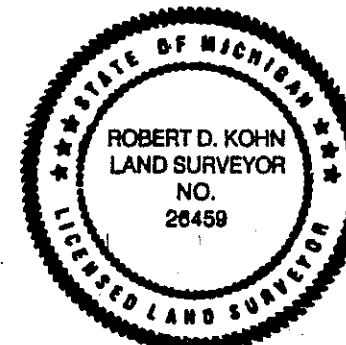


LOCATION MAP
NO SCALE

LEGEND

- ALL DIMENSIONS ARE GIVEN IN FEET.
- L= INDICATES ARC LENGTH ALONG A CURVE.
- CONCRETE MONUMENTS HAVE BEEN PLACED AT ALL POINTS MARKED "C".
- CONCRETE MONUMENTS ARE STEEL BARS ONE-HALF (1/2) INCH IN DIAMETER AND THIRTY-SIX (36) INCHES IN LENGTH, ENCASED IN A CONCRETE CYLINDER FOUR (4) INCHES IN DIAMETER, AND THIRTY-SIX (36) INCHES IN LENGTH.
- LOT CORNERS HAVE BEEN MARKED WITH STEEL BARS ONE-HALF (1/2) INCH IN DIAMETER, AND EIGHTEEN (18) INCHES IN LENGTH.
- (R) INDICATES A RADIAL LINE.
- L INDICATES A RIGHT ANGLE.
- BEARINGS ARE IN RELATION TO THE TRUE MERIDIAN, AS DETERMINED BY POLARIS OBSERVATION, DATE 11/13/84.

THIS PLAT IS SUBJECT TO RESTRICTIONS AS REQUIRED BY ACT 288 OF 1967 AS AMENDED ON CERTAIN LOTS WITH RESPECT TO THE REQUIREMENTS OF THE MICHIGAN DEPARTMENT OF NATURAL RESOURCES AND/OR THE MICHIGAN DEPARTMENT OF PUBLIC HEALTH, WHICH ARE RECORDED IN LIBER 281, PAGES 706-754 OF RECORDS OF THIS COUNTY.



Robert D. Kohn

Giffels-Webster Engineers Inc.

ENGINEERS - SURVEYORS - PLANNERS
2871 BOND STREET, AUBURN HILLS, MICHIGAN
(313) 852-3100

Lib 28 Page 16

PINE CREEK RIDGE SUBDIVISION NO. 1

PART OF THE NW.1/4, SW.1/4 & THE NORTHEAST 1/4 OF SECTION 36,
T. 2 N., R. 5 E., GENOA TOWNSHIP, LIVINGSTON COUNTY, MICHIGAN

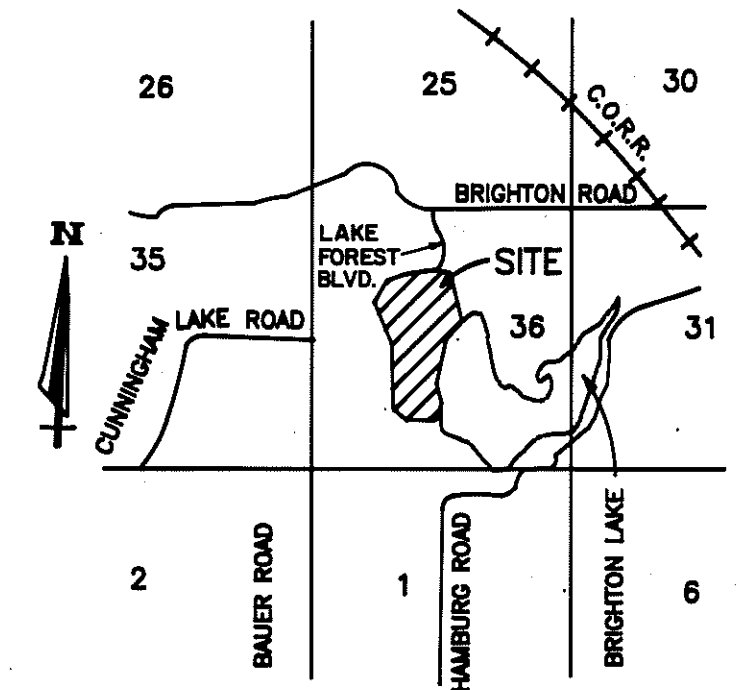
LIBER PAGE
SHEET 3 OF 11 SHEETS

CURVE DATA

CURVE	ARC	RADIUS	CENTRAL ANGLE	CHORD	CHORD BEARING
7	740.53	571.00	74° 18' 23"	689.71	N 78° 19' 15" E
8	654.93	505.00	74° 18' 23"	609.99	N 78° 19' 15" E
11	172.48	1083.00	09° 07' 30"	172.30	N 08° 28' 12" E
12	161.97	1017.00	09° 07' 30"	161.80	N 08° 28' 12" E

THIS PLAT IS SUBJECT TO RESTRICTIONS AS
REQUIRED BY ACT 288 OF 1967 AS AMENDED
ON CERTAIN LOTS WITH RESPECT TO THE
REQUIREMENTS OF THE MICHIGAN DEPARTMENT OF
NATURAL RESOURCES AND/OR THE MICHIGAN
DEPARTMENT OF PUBLIC HEALTH, WHICH ARE
RECORDED IN LIBER 412, PAGES 706-754
OF RECORDS OF THIS COUNTY.

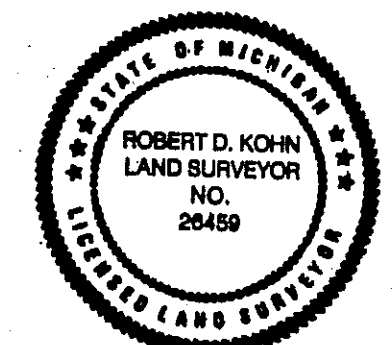
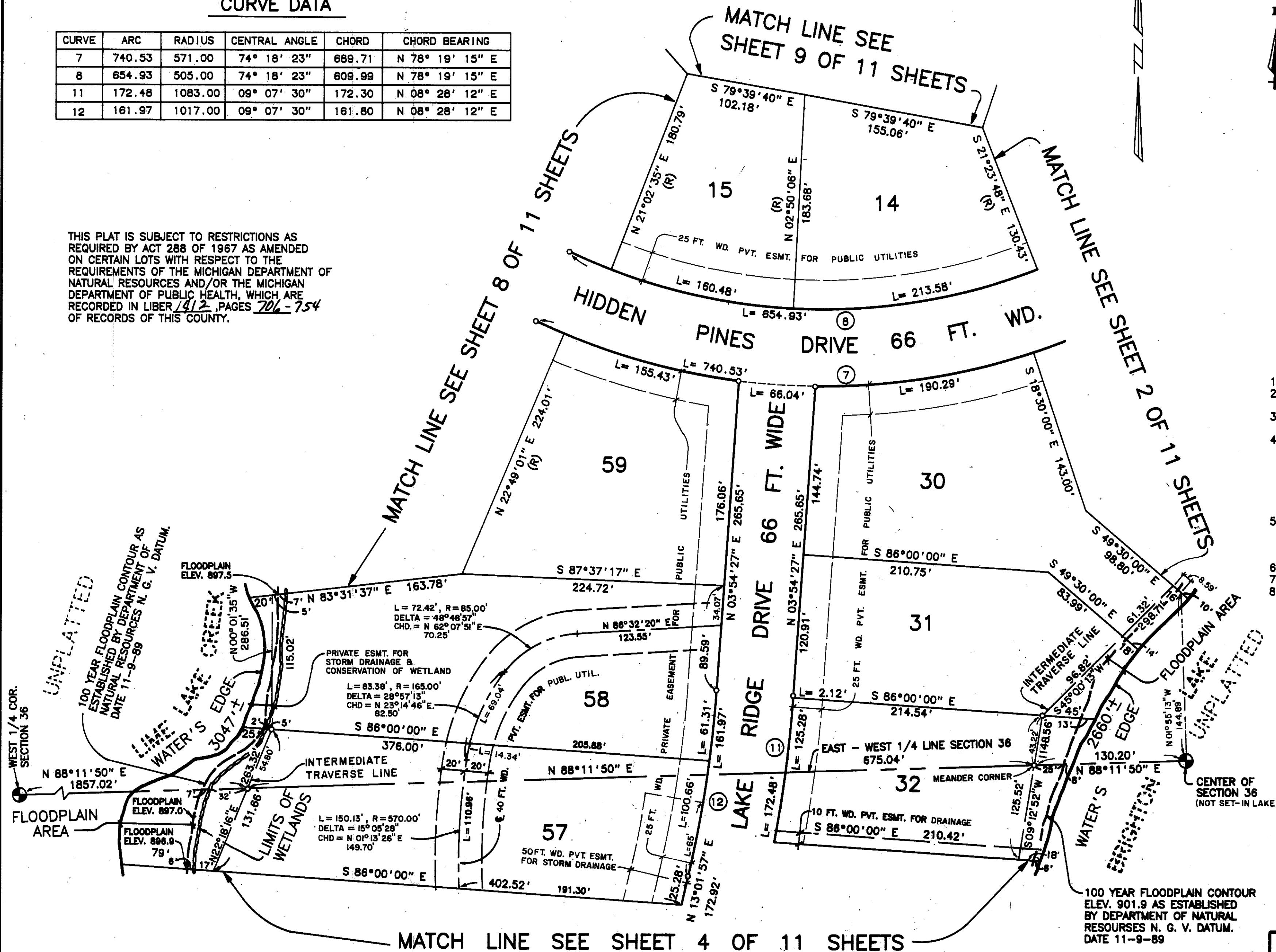
Scale 1" = 60'



LOCATION MAP
NO SCALE

LEGEND

- ALL DIMENSIONS ARE GIVEN IN FEET.
- L= INDICATES ARC LENGTH ALONG A CURVE.
- CONCRETE MONUMENTS HAVE BEEN PLACED AT ALL POINTS MARKED "C".
- CONCRETE MONUMENTS ARE STEEL BARS ONE-HALF (1/2) INCH IN DIAMETER AND THIRTY SIX (36) INCHES IN LENGTH, ENCASED IN A CONCRETE CYLINDER FOUR (4) INCHES IN DIAMETER, AND THIRTY SIX (36) INCHES IN LENGTH.
- LOT CORNERS HAVE BEEN MARKED WITH STEEL BARS ONE-HALF (1/2) INCH IN DIAMETER, AND EIGHTEEN (18) INCHES IN LENGTH.
- (R) INDICATES A RADIAL LINE.
- ⊥ INDICATES A RIGHT ANGLE.
- BEARINGS ARE IN RELATION TO THE TRUE MERIDIAN, AS DETERMINED BY POLARIS OBSERVATION, DATE 11/13/84.



Robert D. Kohn
Giffels-Webster Engineers Inc.
ENGINEERS - SURVEYORS - PLANNERS
2871 BOND STREET, AUBURN HILLS, MICHIGAN
(313) 852-3100

Lib 28 17

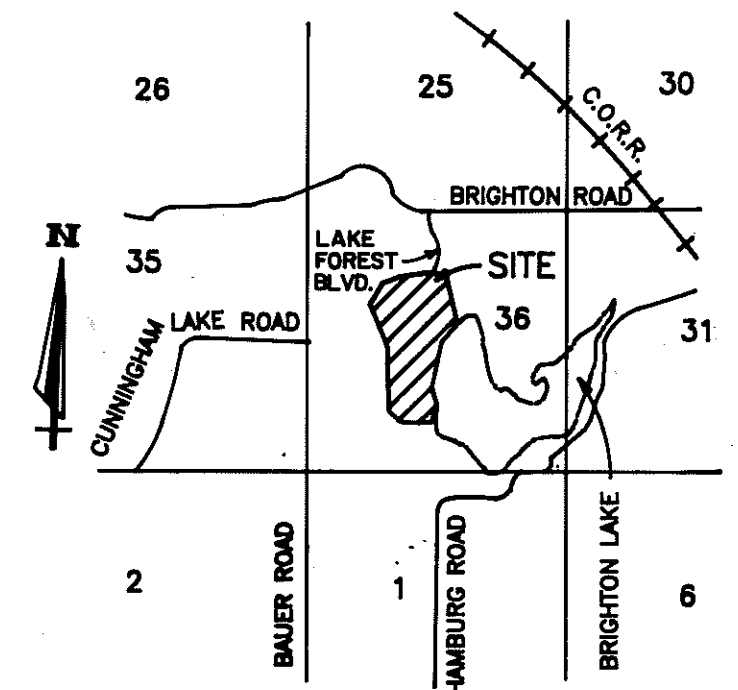
PINE CREEK RIDGE SUBDIVISION NO. 1

PART OF THE NW. 1/4, SW. 1/4 & THE NORTHEAST 1/4 OF SECTION 36,
T. 2 N., R. 5 E., GENOA TOWNSHIP, LIVINGSTON COUNTY, MICHIGAN

LIBER PAGE
SHEET 4 OF 11 SHEETS

Scale 1" = 60'

MATCH LINE SEE SHEET 3 OF 11 SHEETS



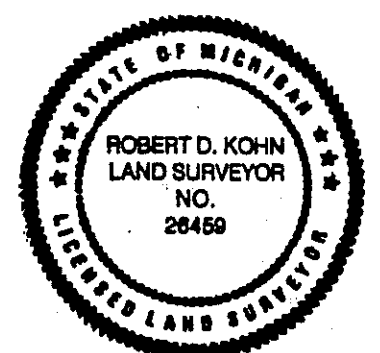
LOCATION MAP

NO SCALE

LEGEND

1. ALL DIMENSIONS ARE GIVEN IN FEET.
2. L INDICATES ARC LENGTH ALONG A CURVE.
3. CONCRETE MONUMENTS HAVE BEEN PLACED AT ALL POINTS MARKED "O".
4. CONCRETE MONUMENTS ARE STEEL BARS ONE-HALF (1/2) INCH IN DIAMETER AND THIRTY-SIX (36) INCHES IN LENGTH, ENCASED IN A CONCRETE CYLINDER FOUR (4) INCHES IN DIAMETER, AND THIRTY-SIX (36) INCHES IN LENGTH.
5. LOT CORNERS HAVE BEEN MARKED WITH STEEL BARS ONE-HALF (1/2) INCH IN DIAMETER, AND EIGHTEEN (18) INCHES IN LENGTH.
6. (R) INDICATES A RADIAL LINE.
7. ∠ INDICATES A RIGHT ANGLE.
8. BEARINGS ARE IN RELATION TO THE TRUE MERIDIAN, AS DETERMINED BY POLARIS OBSERVATION, DATE 11/13/84.

THIS PLAT IS SUBJECT TO RESTRICTIONS AS REQUIRED BY ACT 288 OF 1967 AS AMENDED ON CERTAIN LOTS WITH RESPECT TO THE REQUIREMENTS OF THE MICHIGAN DEPARTMENT OF NATURAL RESOURCES AND/OR THE MICHIGAN DEPARTMENT OF PUBLIC HEALTH, WHICH ARE RECORDED IN LIBER 7212, PAGES 226-234 OF RECORDS OF THIS COUNTY.



Giffels-Webster Engineers Inc.

ENGINEERS - SURVEYORS - PLANNERS
2871 BOND STREET, AUBURN HILLS, MICHIGAN
(313) 852-3100

CURVE	ARC	RADIUS	CENTRAL ANGLE	CHORD	CHORD BEARING
11	172.48	1083.00	09° 07' 30"	172.30	N 08° 28' 12" E
13	73.74	407.00	10° 22' 49"	73.64	N 07° 50' 32" E
14	85.89	473.00	10° 22' 49"	85.58	N 07° 50' 32" E
15	151.94	1538.00	05° 39' 37"	151.88	N 05° 28' 56" E
16	145.42	1472.00	05° 39' 37"	145.38	N 05° 28' 56" E
17	287.81	318.00	51° 49' 12"	277.91	N 34° 13' 21" E
18	227.92	252.00	51° 49' 12"	220.23	N 34° 13' 21" E

SHEET

5

OF 11 SHEETS

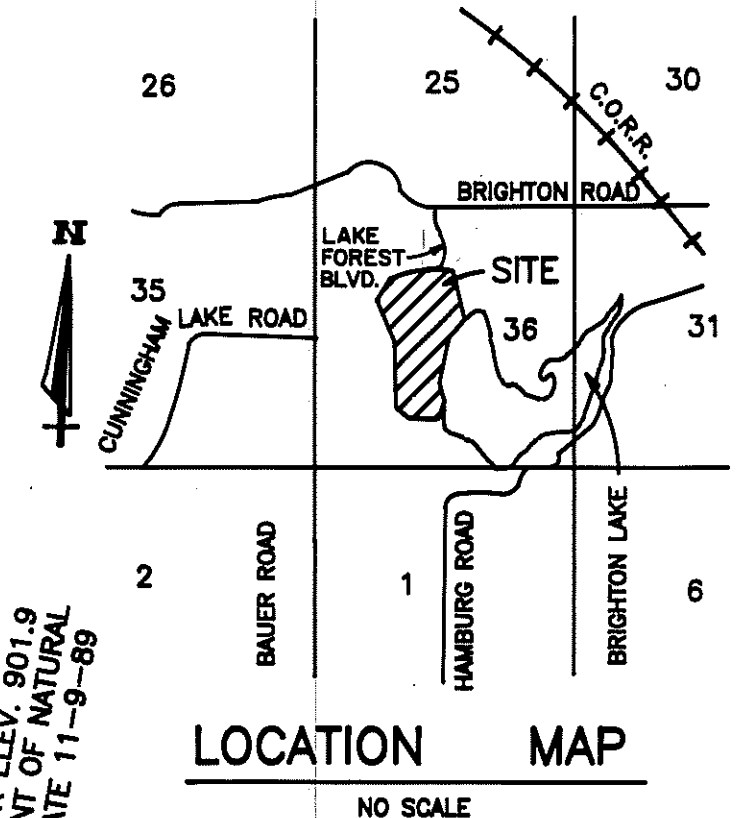
Libu 28 Page 18

PINE CREEK RIDGE SUBDIVISION NO. 1

PART OF THE NW.1/4, SW.1/4 & THE NORTHEAST 1/4 OF SECTION 36,
T. 2 N., R. 5 E., GENOA TOWNSHIP, LIVINGSTON COUNTY, MICHIGAN

LIBER PAGE
SHEET 5 OF 11 SHEETS

Scale 1" = 60'



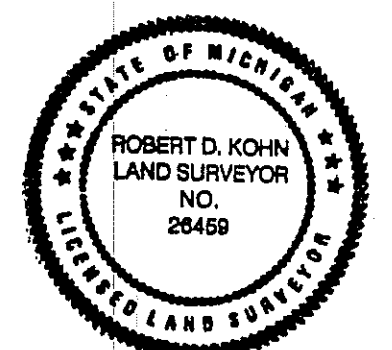
LEGEND

- ALL DIMENSIONS ARE GIVEN IN FEET.
- L= INDICATES ARC LENGTH ALONG A CURVE.
- CONCRETE MONUMENTS HAVE BEEN PLACED AT ALL POINTS MARKED "o".
- CONCRETE MONUMENTS ARE STEEL BARS ONE-HALF (1/2) INCH IN DIAMETER AND THIRTY SIX (36) INCHES IN LENGTH, ENCASED IN A CONCRETE CYLINDER FOUR (4) INCHES IN DIAMETER, AND THIRTY SIX (36) INCHES IN LENGTH.
- LOT CORNERS HAVE BEEN MARKED WITH STEEL BARS ONE-HALF (1/2) INCH IN DIAMETER, AND EIGHTEEN (18) INCHES IN LENGTH.
- (R) INDICATES A RADIAL LINE.
- E INDICATES A RIGHT ANGLE.
- BEARINGS ARE IN RELATION TO THE TRUE MERIDIAN, AS DETERMINED BY POLARIS OBSERVATION, DATE 11/13/84

CURVE DATA

CURVE	ARC	RADIUS	CENTRAL ANGLE	CHORD	CHORD BEARING
17	287.61	318.00	51°49'12"	277.91	N 34°13'21" E
18	227.92	252.00	51°49'12"	220.23	N 34°13'21" E
19	167.37	312.00	30°44'12"	165.37	N 44°45'52" E
20	202.78	378.00	30°44'12"	200.36	N 44°45'52" E
21	254.95	160.00	91°17'53"	228.82	N 16°15'11" W
22	360.12	226.00	91°17'53"	323.21	N 16°15'11" W
23	165.45	324.00	29°15'28"	163.66	N 76°31'51" W
25	76.90	64.00	68°50'45"	72.36	N 54°25'02" E
27	122.43	137.00	51°12'10"	118.40	N 05°36'26" W
28	181.41	203.00	51°12'10"	175.44	N 05°36'26" W
29	108.75	263.00	23°41'27"	107.97	N 19°21'47" W
30	81.46	197.00	23°41'27"	80.88	N 19°21'47" W
31	109.88	197.00	31°57'27"	108.46	N 23°29'48" W
32	149.31	263.00	32°31'37"	147.31	N 23°46'53" W

THIS PLAT IS SUBJECT TO RESTRICTIONS AS REQUIRED BY ACT 288 OF 1967 AS AMENDED ON CERTAIN LOTS WITH RESPECT TO THE REQUIREMENTS OF THE MICHIGAN DEPARTMENT OF NATURAL RESOURCES AND/OR THE MICHIGAN DEPARTMENT OF PUBLIC HEALTH, WHICH ARE RECORDED IN LIBER 19/2, PAGES 106-154 OF RECORDS OF THIS COUNTY.



Robert D. Kohn

Giffels-Webster Engineers Inc.
ENGINEERS - SURVEYORS - PLANNERS
2871 BOND STREET, AUBURN HILLS, MICHIGAN
(313) 852-3100

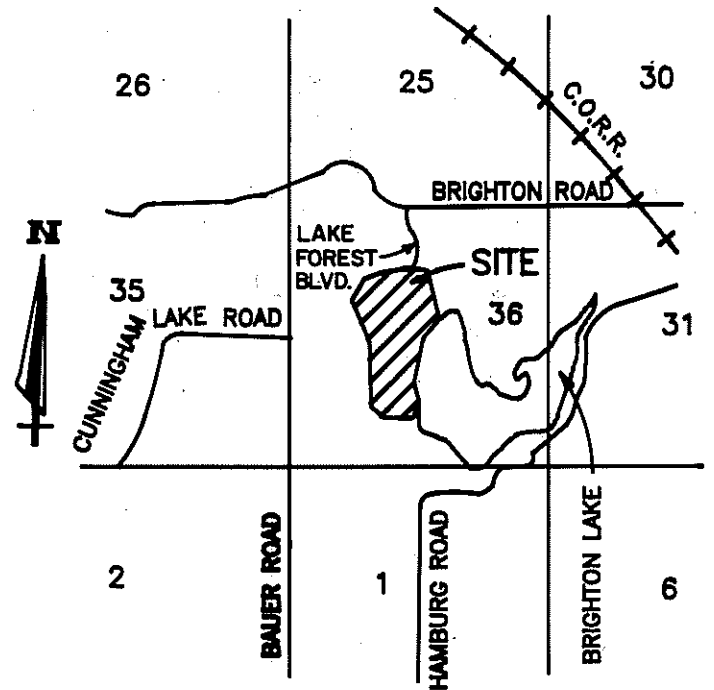
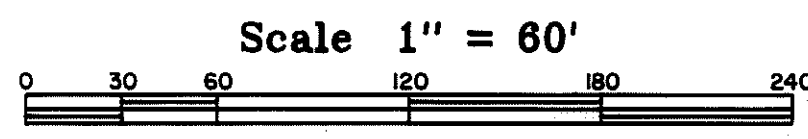
Lib 28 Page 19

PINE CREEK RIDGE SUBDIVISION NO. 1

PART OF THE NW.1/4, SW.1/4 & THE NORTHEAST 1/4 OF SECTION 36,
T. 2 N., R. 5 E., GENOA TOWNSHIP, LIVINGSTON COUNTY, MICHIGAN

CURVE DATA

CURVE	ARC	RADIUS	CENTRAL ANGLE	CHORD	CHORD BEARING
23	165.45	324.00	29°15'28"	163.66	N 76°31'51" W
24	199.15	390.00	29°15'28"	197.00	N 76°31'51" W
25	76.90	64.00	68°50'45"	72.36	N 54°25'02" E
26	156.21	130.00	68°50'45"	146.98	N 54°25'02" E
27	122.43	137.00	51°12'10"	118.40	N 05°36'26" W
28	181.41	203.00	51°12'10"	175.44	N 05°36'26" W

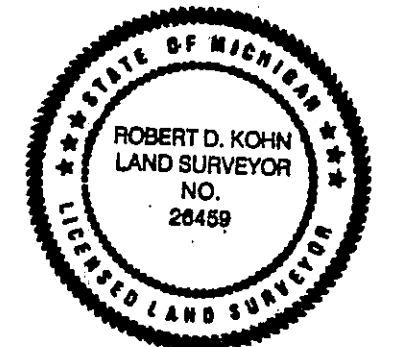
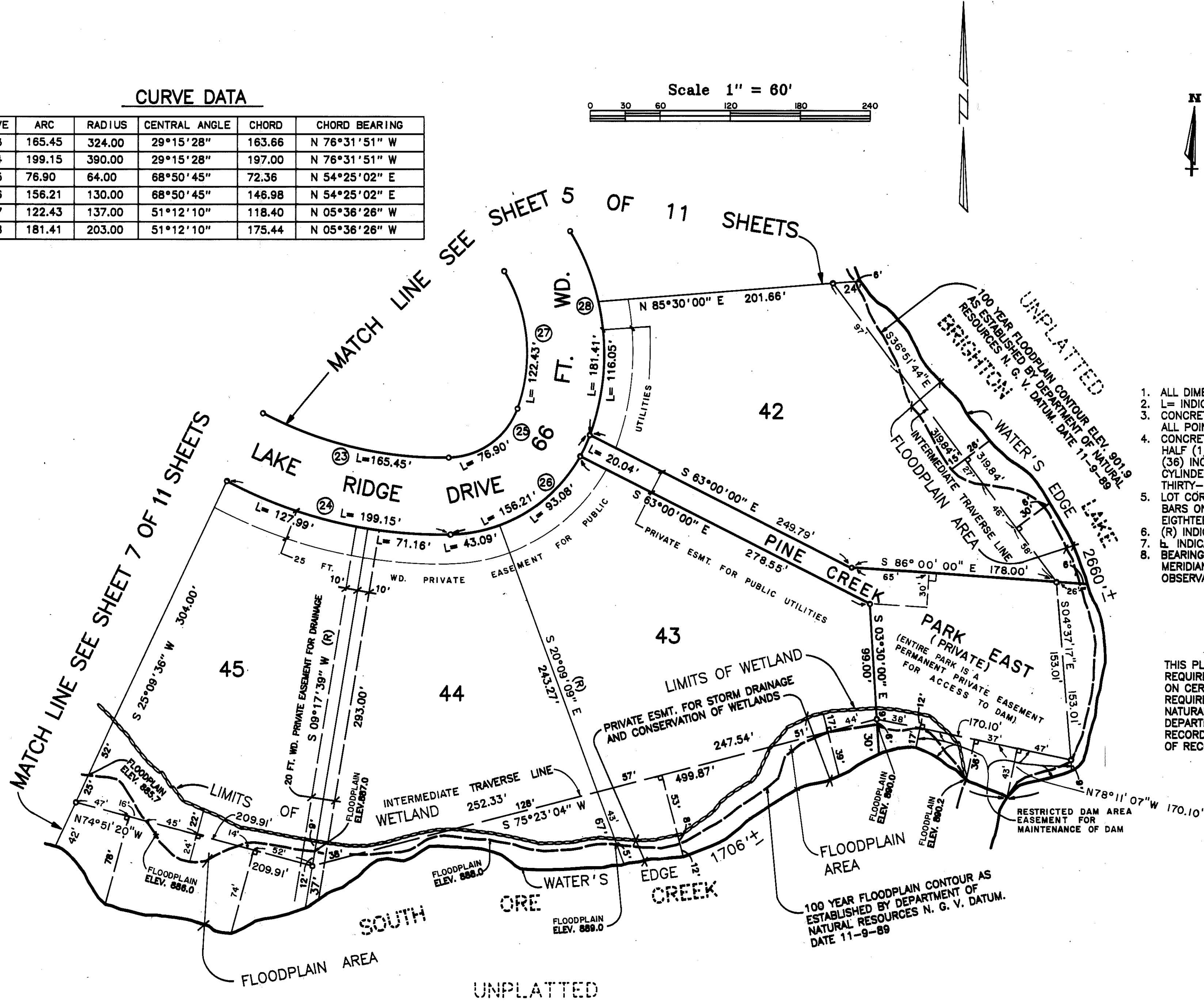


LOCATION MAP
NO SCALE

LEGEND

1. ALL DIMENSIONS ARE GIVEN IN FEET.
2. L= INDICATES ARC LENGTH ALONG A CURVE.
3. CONCRETE MONUMENTS HAVE BEEN PLACED AT ALL POINTS MARKED "o".
4. CONCRETE MONUMENTS ARE STEEL BARS ONE-HALF (1/2) INCH IN DIAMETER AND THIRTY-SIX (36) INCHES IN LENGTH, ENCASED IN A CONCRETE CYLINDER FOUR (4) INCHES IN DIAMETER, AND THIRTY-SIX (36) INCHES IN LENGTH.
5. LOT CORNERS HAVE BEEN MARKED WITH STEEL BARS ONE-HALF (1/2) INCH IN DIAMETER, AND EIGHTEEN (18) INCHES IN LENGTH.
6. (R) INDICATES A RADIAL LINE.
7. L= INDICATES A RIGHT ANGLE.
8. BEARINGS ARE IN RELATION TO THE TRUE MERIDIAN, AS DETERMINED BY POLARIS OBSERVATION, DATE 11/13/84.

THIS PLAT IS SUBJECT TO RESTRICTIONS AS REQUIRED BY ACT 288 OF 1967 AS AMENDED ON CERTAIN LOTS WITH RESPECT TO THE REQUIREMENTS OF THE MICHIGAN DEPARTMENT OF NATURAL RESOURCES AND/OR THE MICHIGAN DEPARTMENT OF PUBLIC HEALTH, WHICH ARE RECORDED IN LIBER 28/2, PAGES 226-254 OF RECORDS OF THIS COUNTY.



Robert D. Kohn

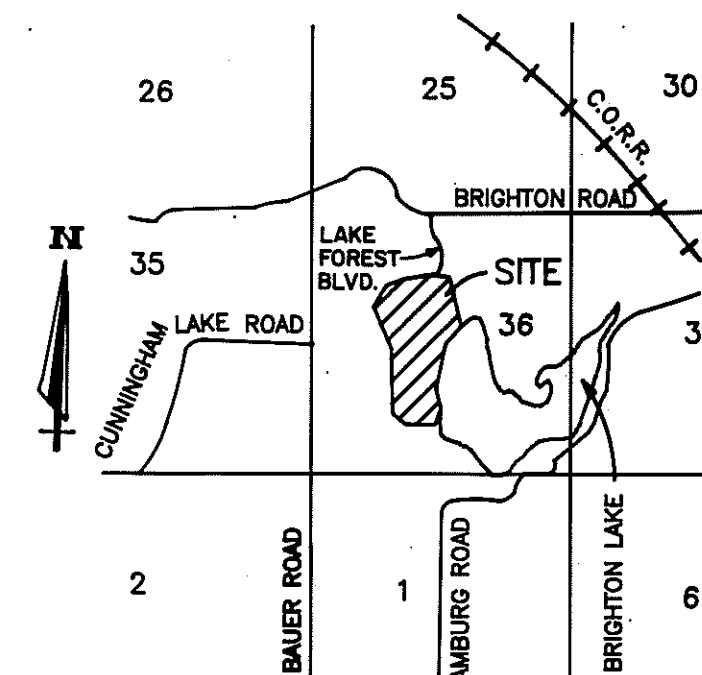
Giffels-Webster Engineers Inc.
ENGINEERS - SURVEYORS - PLANNERS
2871 BOND STREET, AUBURN HILLS, MICHIGAN
(313) 852-3100

PINE CREEK RIDGE SUBDIVISION NO. 1

PART OF THE NW.1/4, SW.1/4 & THE NORTHEAST 1/4 OF SECTION 36,
T. 2 N., R. 5 E., GENOA TOWNSHIP, LIVINGSTON COUNTY, MICHIGAN

LIBER PAGE
SHEET 7 OF 11 SHEETS

Scale 1" = 60'

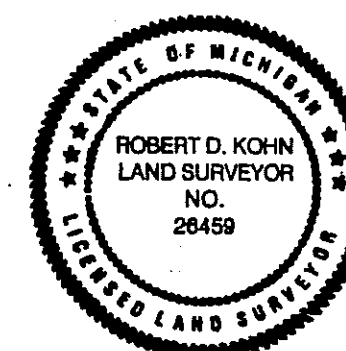


LOCATION MAP
NO SCALE

LEGEND

1. ALL DIMENSIONS ARE GIVEN IN FEET.
2. L= INDICATES ARC LENGTH ALONG A CURVE.
3. CONCRETE MONUMENTS HAVE BEEN PLACED AT ALL POINTS MARKED "o".
4. CONCRETE MONUMENTS ARE STEEL BARS ONE-HALF (1/2) INCH IN DIAMETER AND THIRTY-SIX (36) INCHES IN LENGTH, ENCASED IN A CONCRETE CYLINDER FOUR (4) INCHES IN DIAMETER, AND THIRTY-SIX (36) INCHES IN LENGTH.
5. LOT CORNERS HAVE BEEN MARKED WITH STEEL BARS ONE-HALF (1/2) INCH IN DIAMETER, AND EIGHTEEN (18) INCHES IN LENGTH.
6. (R) INDICATES A RADIAL LINE.
7. L INDICATES A RIGHT ANGLE.
8. BEARINGS ARE IN RELATION TO THE TRUE MERIDIAN, AS DETERMINED BY POLARIS OBSERVATION, DATE 11/13/84.

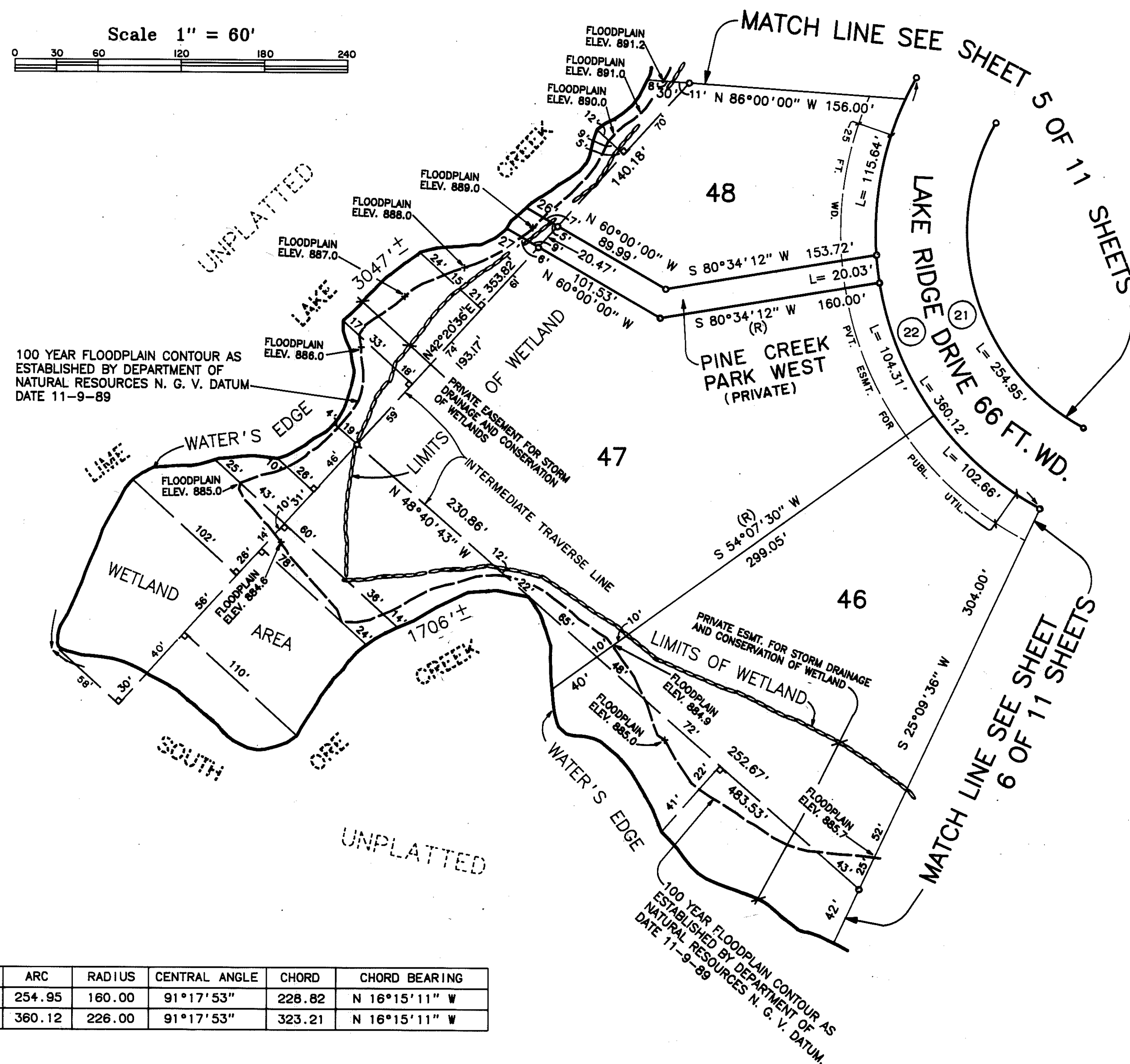
THIS PLAT IS SUBJECT TO RESTRICTIONS AS REQUIRED BY ACT 288 OF 1967 AS AMENDED ON CERTAIN LOTS WITH RESPECT TO THE REQUIREMENTS OF THE MICHIGAN DEPARTMENT OF NATURAL RESOURCES AND/OR THE MICHIGAN DEPARTMENT OF PUBLIC HEALTH, WHICH ARE RECORDED IN LIBER 412, PAGES 254 OF RECORDS OF THIS COUNTY.



Robert D. Kohn

Giffels-Webster Engineers Inc.
ENGINEERS - SURVEYORS - PLANNERS
2871 BOND STREET, AUBURN HILLS, MICHIGAN
(313) 852-3100

CURVE	ARC	RADIUS	CENTRAL ANGLE	CHORD	CHORD BEARING
21	254.95	160.00	91°17'53"	228.82	N 16°15'11" W
22	360.12	226.00	91°17'53"	323.21	N 16°15'11" W

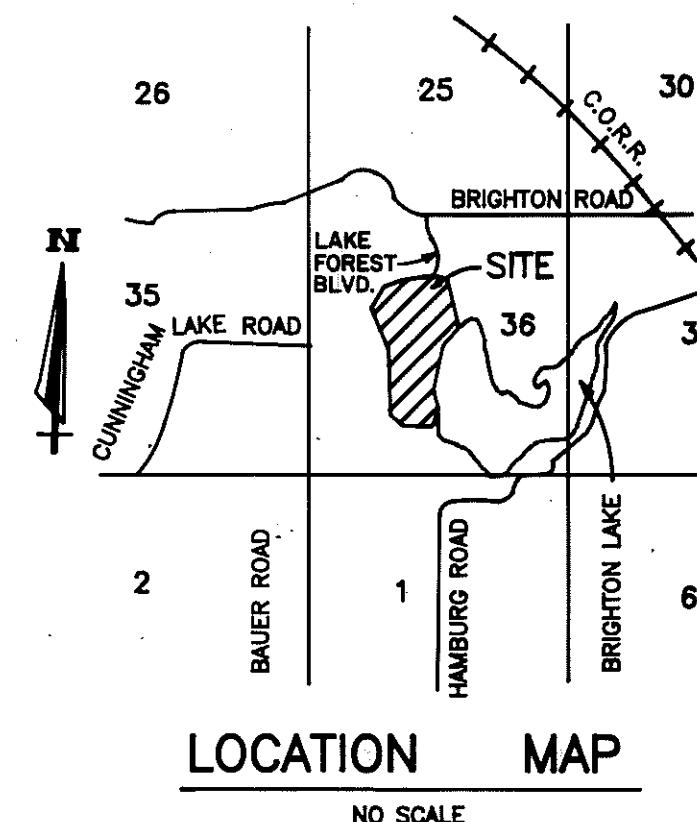


Lib 28 Page 21

PINE CREEK RIDGE SUBDIVISION NO. 1

PART OF THE NW.1/4, SW.1/4 & THE NORTHEAST 1/4 OF SECTION 36,
T. 2 N., R. 5 E., GENOA TOWNSHIP, LIVINGSTON COUNTY, MICHIGAN

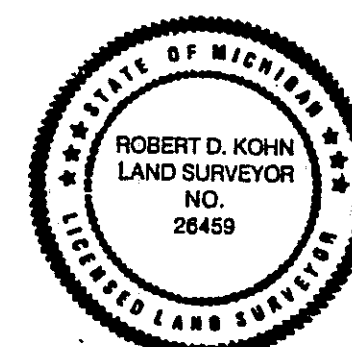
LIBER PAGE
SHEET 8 OF 11 SHEETS



LEGEND

1. ALL DIMENSIONS ARE GIVEN IN FEET.
2. L= INDICATES ARC LENGTH ALONG A CURVE.
3. CONCRETE MONUMENTS HAVE BEEN PLACED AT ALL POINTS MARKED " ".
4. CONCRETE MONUMENTS ARE STEEL BARS ONE-HALF (1/2) INCH IN DIAMETER AND THIRTY-SIX (36) INCHES IN LENGTH, ENCASED IN A CONCRETE CYLINDER FOUR (4) INCHES IN DIAMETER, AND THIRTY-SIX (36) INCHES IN LENGTH.
5. LOT CORNERS HAVE BEEN MARKED WITH STEEL BARS ONE-HALF (1/2) INCH IN DIAMETER, AND EIGHTEEN (18) INCHES IN LENGTH.
6. (R) INDICATES A RADIAL LINE.
7. L INDICATES A RIGHT ANGLE.
8. BEARINGS ARE IN RELATION TO THE TRUE MERIDIAN, AS DETERMINED BY POLARIS OBSERVATION, DATE 11/13/84.

THIS PLAT IS SUBJECT TO RESTRICTIONS AS REQUIRED BY ACT 288 OF 1967 AS AMENDED ON CERTAIN LOTS WITH RESPECT TO THE REQUIREMENTS OF THE MICHIGAN DEPARTMENT OF NATURAL RESOURCES AND/OR THE MICHIGAN DEPARTMENT OF PUBLIC HEALTH, WHICH ARE RECORDED IN LIBER 1412, PAGES 706-754 OF RECORDS OF THIS COUNTY.



Robert D. Kohn

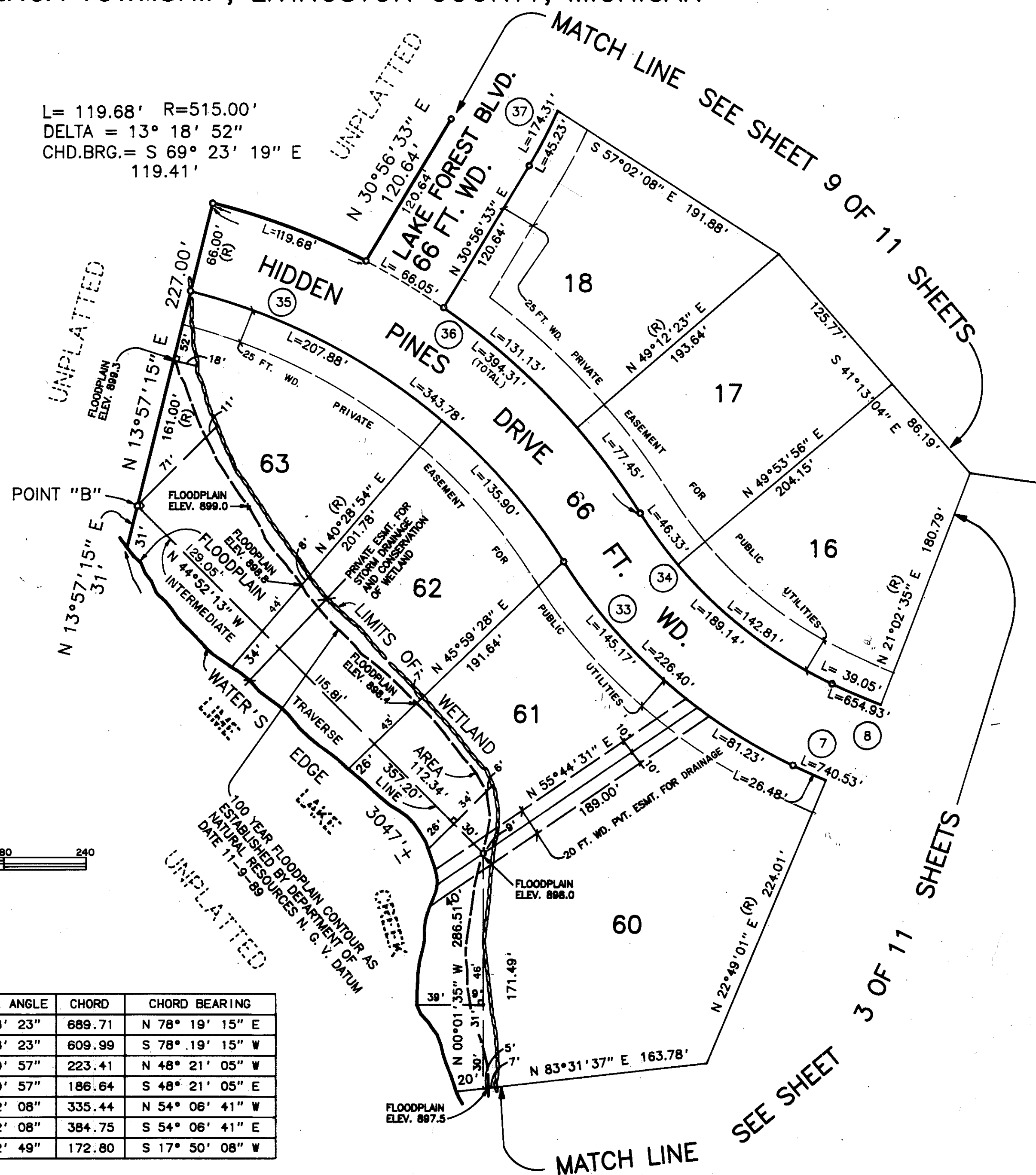
Giffels-Webster Engineers Inc.
ENGINEERS - SURVEYORS - PLANNERS
2871 BOND STREET, AUBURN HILLS, MICHIGAN
(313) 852-3100

Liber 28 Page 22

L= 119.68' R=515.00'
DELTA = 13° 18' 52"
CHD.BRG.= S 69° 23' 19" E
119.41'

Scale 1" = 60'

CURVE	ARC	RADIUS	CENTRAL ANGLE	CHORD	CHORD BEARING
7	740.53	571.00	74° 18' 23"	689.71	N 78° 19' 15" E
8	654.93	505.00	74° 18' 23"	609.99	S 78° 19' 15" W
33	226.40	401.00	32° 20' 57"	223.41	N 48° 21' 05" W
34	189.14	335.00	32° 20' 57"	186.64	S 48° 21' 05" E
35	343.78	449.00	43° 52' 08"	335.44	N 54° 06' 41" W
36	394.31	515.00	43° 52' 08"	384.75	S 54° 06' 41" E
37	174.31	381.00	26° 12' 49"	172.80	S 17° 50' 08" W



LIBER PAGE
SHEET 9 OF 11 SHEETS

L=173.46' R=526.00'
DELTA =18° 53' 41"
CHD.= N 57° 30' 15" E
172.68'

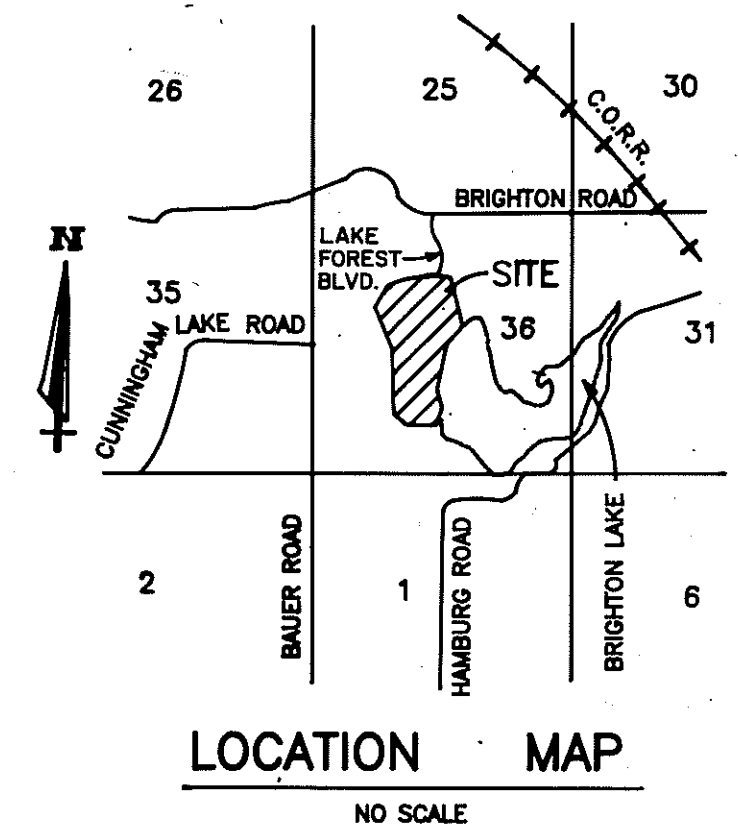
L=288.12' R=381.00'
DELTA =43° 19' 41"
CHD.= N 26° 23' 34" E
281.30'

L=144.12' R=315.00'
DELTA= 26°12'49"
CHD.= N 17° 50' 08" E
142.86'

UNPLATTED

LAT IS SUBJECT TO RESTRICTIONS AS
RED BY ACT 288 OF 1967 AS AMENDED
CERTAIN LOTS WITH RESPECT TO THE
REMENTS OF THE MICHIGAN DEPARTMENT OF
NAL RESOURCES AND/OR THE MICHIGAN
TMENT OF PUBLIC HEALTH, WHICH ARE
D IN LIBER 1412, PAGES 706-754
CORDS OF THIS COUNTY.

E	ARC	RADIUS	CENTRAL ANGLE	CHORD	CHORD BEARING
	103.72	366.00	16° 14' 15"	103.38	N 63° 24' 45" W
	174.31	381.00	26° 12' 49"	172.80	S 17° 50' 08" W
	238.21	315.00	43° 19' 41"	232.57	S 26° 23' 34" W
	151.70	480.00	18° 53' 41"	151.01	N 57° 30' 15" E
	159.59	145.00	63° 03' 35"	151.65	S 40° 00' 05" E
	424.22	100.00	243° 03' 35"	170.47	N 49° 59' 55" E

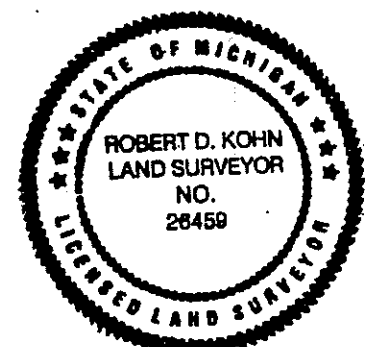


LEGEND

1. ALL DIMENSIONS ARE GIVEN IN FEET.
2. L= INDICATES ARC LENGTH ALONG A CURVE.
3. CONCRETE MONUMENTS HAVE BEEN PLACED AT ALL POINTS MARKED " ".
4. CONCRETE MONUMENTS ARE STEEL BARS ONE-HALF (1/2) INCH IN DIAMETER AND THIRTY-SIX (36) INCHES IN LENGTH, ENCASED IN A CONCRETE CYLINDER FOUR (4) INCHES IN DIAMETER, AND THIRTY-SIX (36) INCHES IN LENGTH.
5. LOT CORNERS HAVE BEEN MARKED WITH STEEL BARS ONE-HALF (1/2) INCH IN DIAMETER, AND EIGHTEEN (18) INCHES IN LENGTH.
6. (R) INDICATES A RADIAL LINE.
7. R INDICATES A RIGHT ANGLE.
8. BEARINGS ARE IN RELATION TO THE TRUE MERIDIAN, AS DETERMINED BY POLARIS OBSERVATION, DATE 11/13/84.

THIS PLAT IS SUBJECT TO RESTRICTIONS AS
REQUIRED BY ACT 288 OF 1967 AS AMENDED
ON CERTAIN LOTS WITH RESPECT TO THE
REQUIREMENTS OF THE MICHIGAN DEPARTMENT OF
NATURAL RESOURCES AND/OR THE MICHIGAN
DEPARTMENT OF PUBLIC HEALTH, WHICH ARE
RECORDED IN LIBER 1412, PAGES 286-754
OF RECORDS OF THIS COUNTY.

CURVE	ARC	RADIUS	CENTRAL ANGLE	CHORD	CHORD BEARING
10	103.72	366.00	16° 14' 15"	103.38	N 63° 24' 45" W
37	174.31	381.00	26° 12' 49"	172.80	S 17° 50' 08" W
38	238.21	315.00	43° 19' 41"	232.57	S 26° 23' 34" W
39	151.70	460.00	18° 53' 41"	151.01	N 57° 30' 15" E
40	159.59	145.00	63° 03' 35"	151.65	S 40° 00' 05" E
41	424.22	100.00	243° 03' 35"	170.47	N 49° 59' 55" E



Robert D. York

Giffels-Webster Engineers Inc.
ENGINEERS - SURVEYORS - PLANNERS
2871 BOND STREET, AUBURN HILLS, MICHIGAN
(313) 852-3100