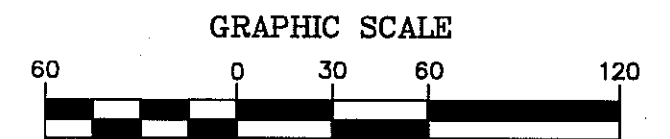


# PEBBLE CREEK

A Subdivision of Part of the Northeast 1/4 of Section 13  
and Part of the Southeast 1/4 of Section 12  
Town 2 North, Range 5 East,  
Genoa Township, Livingston County, Michigan

SHEET 1 OF 7  
LIBER \_\_\_\_\_ PAGE \_\_\_\_\_



( IN FEET )  
1 INCH = 60 FEET

## CURVE TABLE

CURVE	RADIUS	LENGTH	CHORD	BEARING	DELTA
C1	433.00'	36.55'	36.54'	N48°37'02"W	04°50'12"
C2	35.00'	54.98'	49.50'	N06°02'07"W	90°00'00"
C3	35.00'	54.98'	49.50'	S83°57'53"W	90°00'00"
C4	267.00'	129.75'	128.48'	S64°57'24"E	27°50'34"
C5	333.00'	161.54'	159.96'	N64°55'57"W	27°47'39"
C6	35.00'	52.07'	47.40'	N36°12'28"W	85°14'37"
C7	35.00'	58.83'	52.15'	N51°48'59"E	96°18'46"
C8	267.00'	219.52'	213.39'	N77°34'07"E	47°06'23"
C9	333.00'	267.10'	260.00'	N78°59'39"E	45°57'26"
C14	263.00'	249.29'	240.07'	N11°48'33"E	54°18'39"
C15	197.00'	203.30'	194.40'	S09°24'00"W	59°07'45"
C16	75.00'	60.83'	59.18'	N07°53'21"E	46°28'15"
C17	75.00'	47.43'	46.64'	S38°16'47"E	36°13'50"
C18	75.00'	350.19'	108.34'	S77°21'53"W	267°31'11"
C19	333.00'	101.39'	101.00'	N02°18'32"W	17°26'45"
C20	267.00'	68.46'	68.28'	S03°41'09"E	14°41'31"
C21	533.00'	126.33'	126.03'	N04°14'31"W	13°34'47"
C22	467.00'	110.69'	110.42'	N04°14'31"W	13°34'47"

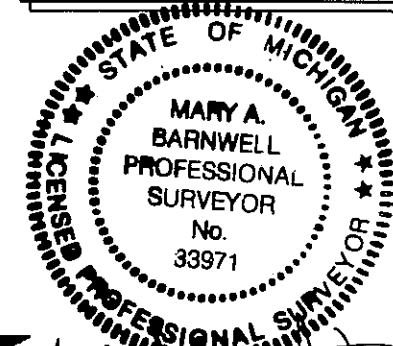
CERTIFIED TRUE COPY OF  
RECORDED PLAT  
BY DEPARTMENT OF CONSUMER  
AND INDUSTRY SERVICES

BY *Maynard R. Dyer*  
MAYNARD R. DYER, P.S., MANAGER  
SUBDIVISION CONTROL AND  
SURVEY & REMONUMENTATION  
SECTION

DATE 4-5-00

## LEGEND:

- 1) ALL DIMENSIONS SHOWN ARE IN FEET.
- 2) ALL CURVILINEAR DIMENSIONS SHOWN ARE ARC LENGTHS.
- 3) THE SYMBOL "o" INDICATES A CONCRETE MONUMENT 4 INCHES IN DIAMETER, 36 INCHES IN LENGTH, ENCASED A 1/2 INCH DIAMETER x 36 INCH LONG STEEL ROD.
- 4) THE SYMBOL "•" INDICATES A FOUND CONCRETE MONUMENT 4 INCHES IN DIAMETER, ENCASED A 1/2 INCH DIAMETER STEEL ROD.
- 5) LOT CORNERS ARE MARKED WITH 3/4 INCH DIAMETER x 18 INCH LONG STEEL PIPES WITH YELLOW PLASTIC CAPS MARKED "MAB 33971".
- 6) THE SYMBOL (R) INDICATES A RADIAL LINE.
- 7) THE SYMBOL (NR) INDICATES A NON-RADIAL LINE.
- 8) BEARINGS WERE ESTABLISHED FROM MICHIGAN DEPARTMENT OF TRANSPORTATION'S FILE No. 47-4-2, ROUTE I-96, CONTROL SECTION 47065, SHEET No. 40 AND RECORDED IN LIBER 393, PAGE 108, LIVINGSTON COUNTY RECORDS.



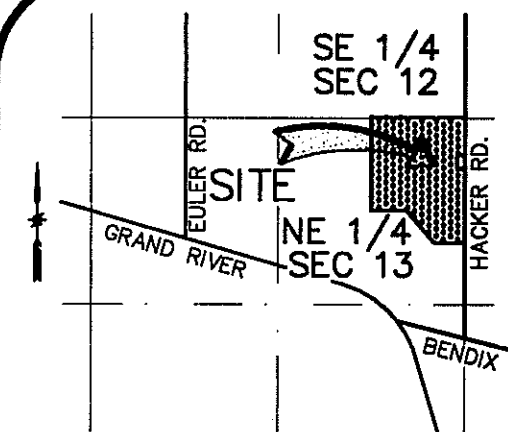
MARY A. BARNWELL  
PROFESSIONAL SURVEYOR  
SURVEYOR NO. 33971

**DESINE INC**  
**ENGINEERS**

7011 GRAND RIVER AVE.  
BRIGHTON, MICHIGAN 48114  
(810) 227-9533

ALL DRAIN EASEMENTS ARE UNDER THE JURISDICTION  
OF THE LIVINGSTON COUNTY DRAIN COMMISSIONER  
AND THE PEBBLE CREEK DRAIN DRAINAGE DISTRICT.

DETAIL  
SCALE  
1"=1'



LOCATION MAP  
NO SCALE

NORTH 1/4 CORNER  
SECTION 13, T2N, R5E  
GENOA TOWNSHIP,  
LIVINGSTON COUNTY,  
MICHIGAN  
LCRC #1578

UNPLATTED

SOUTH LINE OF "BIRKENSTOCK  
FARMS" AS RECORDED IN LIBER  
30 OF PLATS, PAGES 49  
THROUGH 52, LIVINGSTON  
COUNTY RECORDS

NORTH 1/4 CORNER  
SECTION 13, T2N, R5E  
GENOA TOWNSHIP,  
LIVINGSTON COUNTY,  
MICHIGAN  
LCRC #1578

MATCHLINE-SEE SHEET No. 3

MATCHLINE-SEE SHEET No. 3

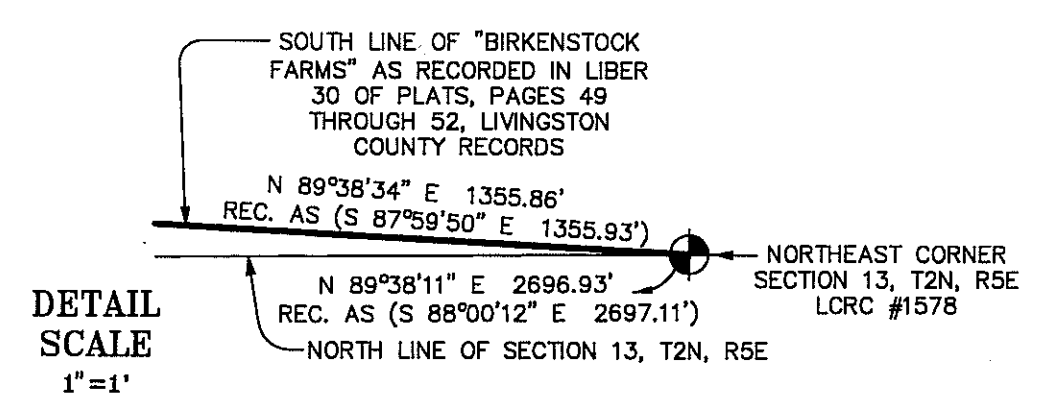
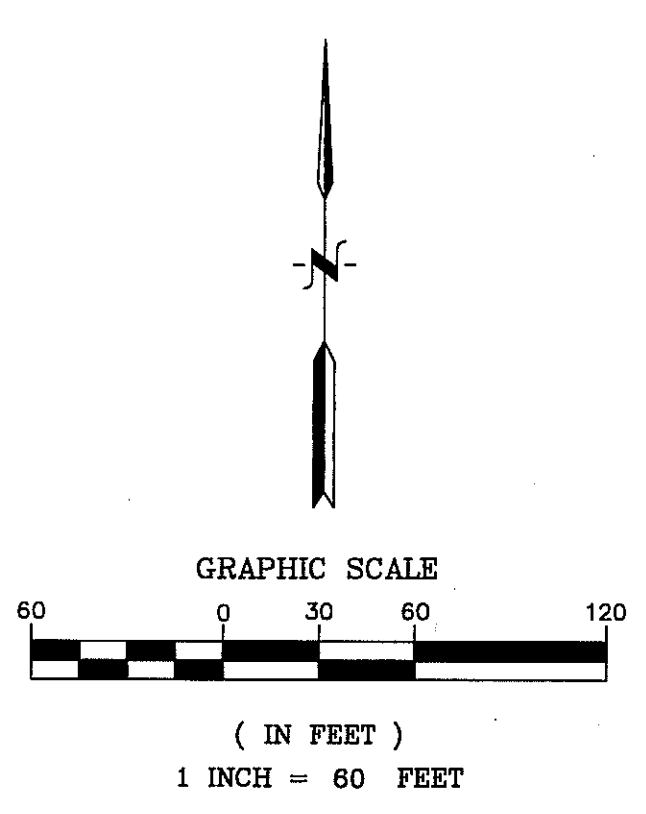
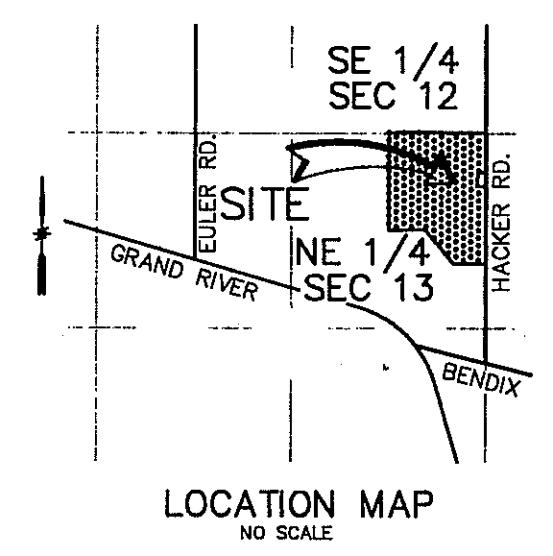
MATCHLINE-SEE SHEET No. 3

MATCHLINE-SEE SHEET No. 3

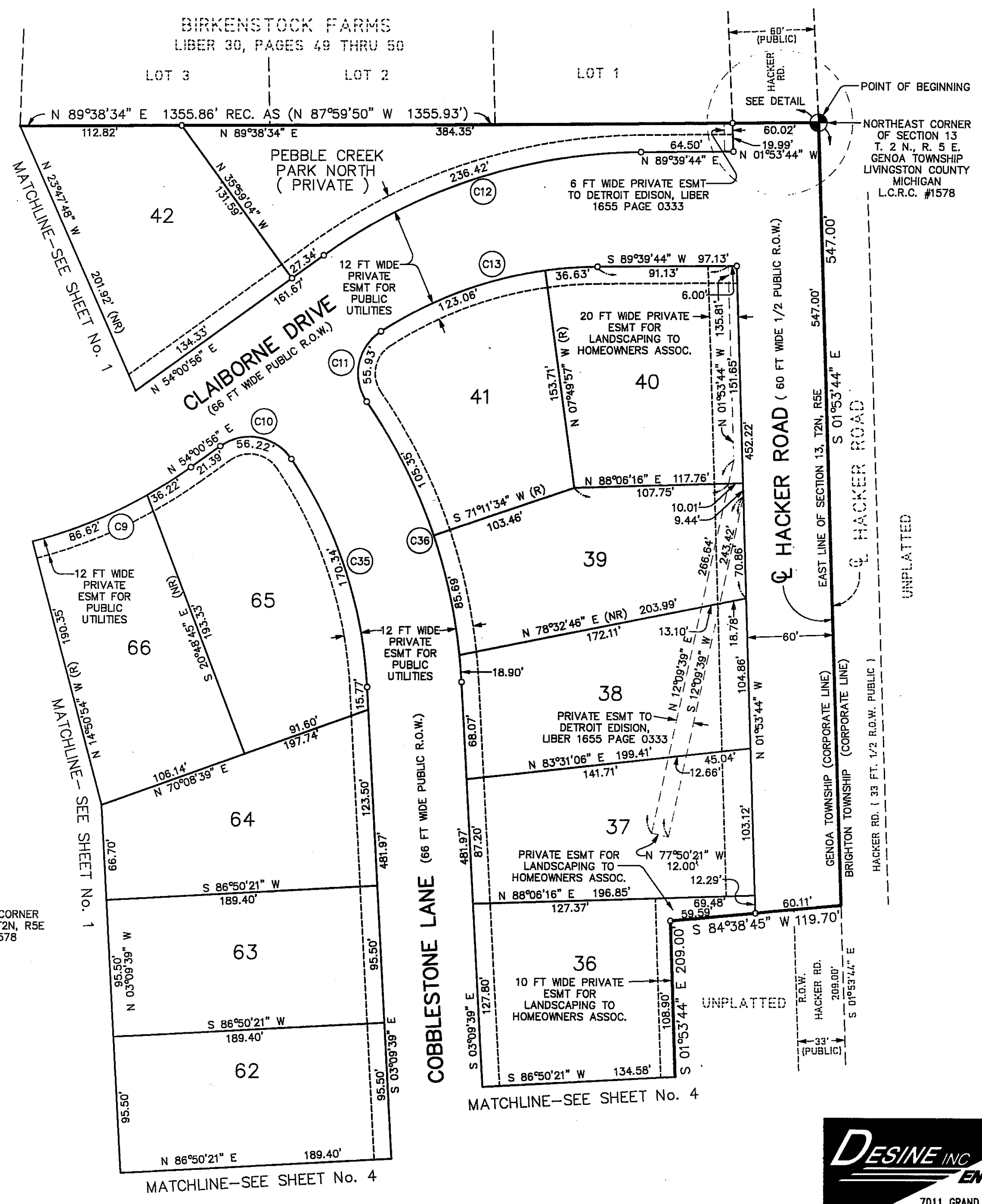
MATCHLINE-SEE SHEET No. 2

# PEBBLE CREEK

A Subdivision of Part of the Northeast 1/4 of Section 13  
and Part of the Southeast 1/4 of Section 12  
Town 2 North, Range 5 East  
Genoa Township, Livingston County, Michigan



CURVE TABLE					
CURVE	RADIUS	LENGTH	CHORD	BEARING	DELTA
C9	333.00'	267.10'	260.00'	N76°59'39"E	45°57'26"
C10	35.00'	56.22'	50.37'	S79°58'01"E	92°02'06"
C11	35.00'	55.93'	50.16'	S11°12'35"W	91°33'10"
C12	380.00'	236.42'	232.62'	N71°50'20"E	35°38'48"
C13	280.00'	159.69'	157.53'	S73°19'27"W	32°40'33"
C35	317.00'	170.34'	168.30'	S18°33'19"E	30°47'19"
C36	383.00'	209.94'	207.32'	S18°51'50"E	31°24'21"



- LEGEND:**
- 1) ALL DIMENSIONS SHOWN ARE IN FEET.
  - 2) ALL CURVILINEAR DIMENSIONS SHOWN ARE ARC LENGTHS.
  - 3) THE SYMBOL "o" INDICATES A CONCRETE MONUMENT 4 INCHES IN DIAMETER, 36 INCHES IN LENGTH, ENCASED A 1/2 INCH DIAMETER x 36 INCH LONG STEEL ROD.
  - 4) THE SYMBOL "•" INDICATES A FOUND CONCRETE MONUMENT 4 INCHES IN DIAMETER, ENCASED A 1/2 INCH DIAMETER STEEL ROD.
  - 5) LOT CORNERS ARE MARKED WITH 3/4 INCH DIAMETER x 18 INCH LONG STEEL PIPES WITH YELLOW PLASTIC CAPS MARKED "MAB 33971".
  - 6) THE SYMBOL (R) INDICATES A RADIAL LINE.
  - 7) THE SYMBOL (NR) INDICATES A NON-RADIAL LINE.
  - 8) BEARINGS WERE ESTABLISHED FROM MICHIGAN DEPARTMENT OF TRANSPORTATION'S FILE No. 47-4-2, ROUTE 1-96, CONTROL SECTION 47065, SHEET No. 40 AND RECORDED IN LIBER 393, PAGE 108, LIVINGSTON COUNTY RECORDS.

ALL DRAIN EASEMENTS ARE UNDER THE JURISDICTION OF THE LIVINGSTON COUNTY DRAIN COMMISSIONER AND THE PEBBLE CREEK DRAIN DRAINAGE DISTRICT.



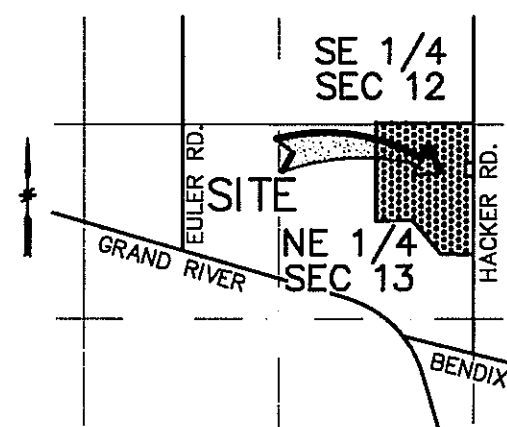
**DESINE INC ENGINEERS**  
7011 GRAND RIVER AVE.  
BRIGHTON, MICHIGAN 48114  
(810) 227-9533

MARY A. BARNWELL  
PROFESSIONAL SURVEYOR  
SURVEYOR NO. 33971

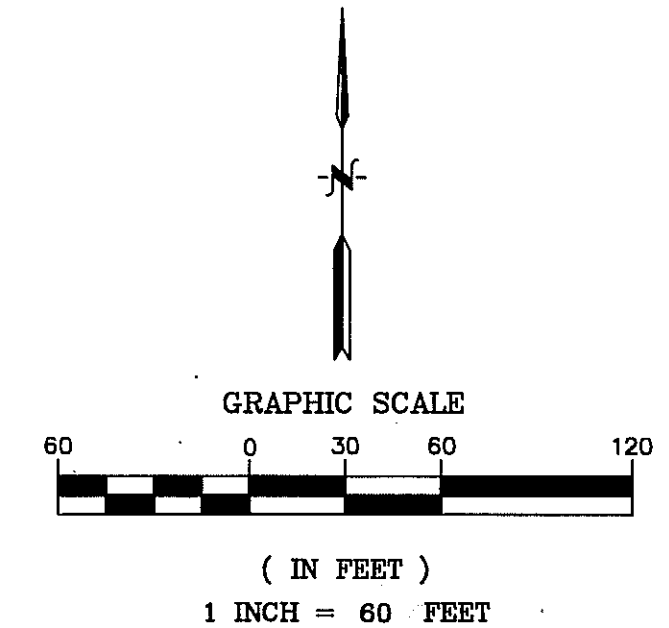
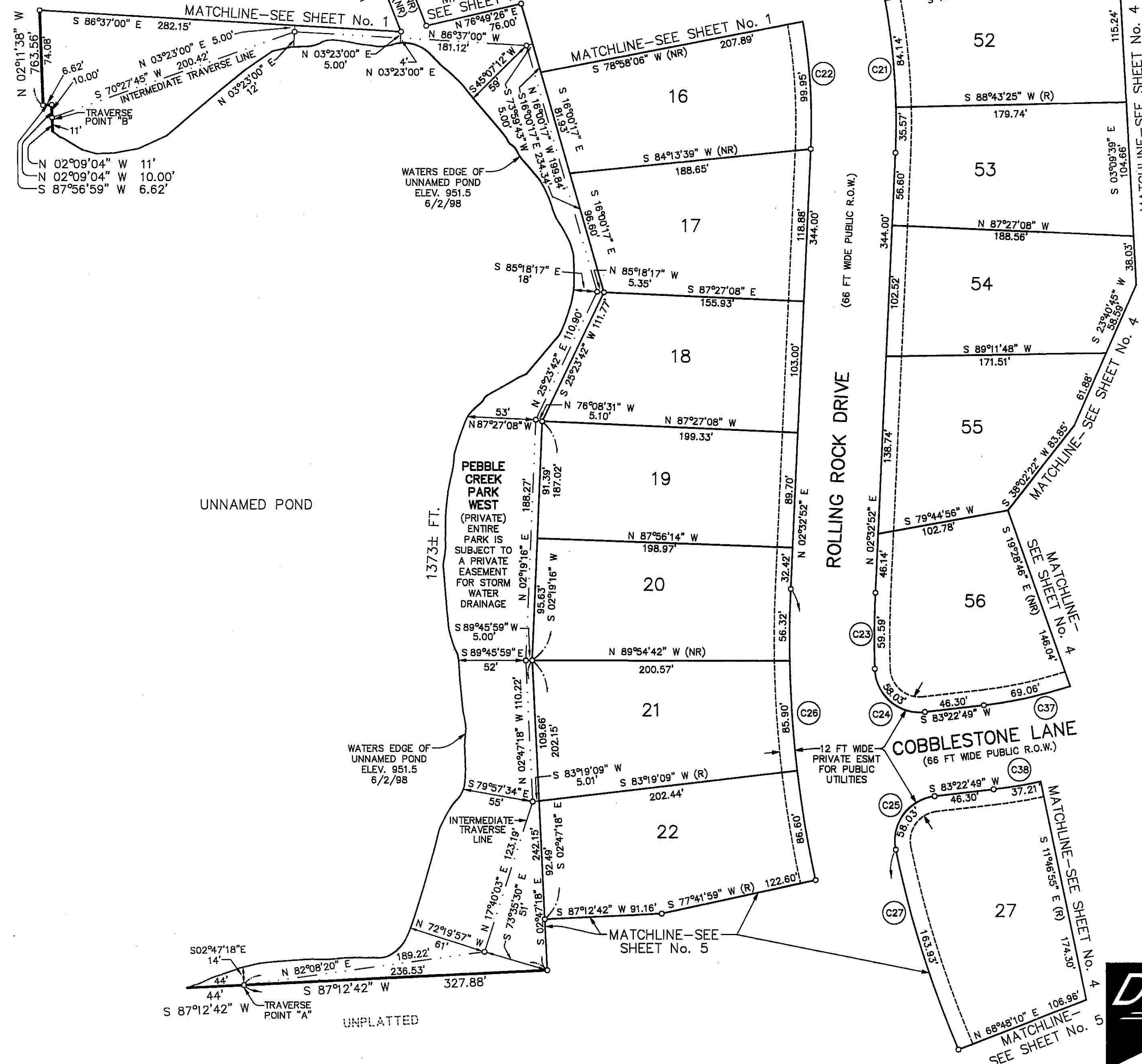
# PEBBLE CREEK

A Subdivision of Part of the Northeast 1/4 of Section 13  
and Part of the Southeast 1/4 of Section 12  
Town 2 North, Range 5 East,  
Genoa Township, Livingston County, Michigan

SHEET 3 OF 7  
LIBER \_\_\_\_\_ PAGE \_\_\_\_\_



LOCATION MAP  
NO SCALE



## LEGEND:

- 1) ALL DIMENSIONS SHOWN ARE IN FEET.
- 2) ALL CURVILINEAR DIMENSIONS SHOWN ARE ARC LENGTHS.
- 3) THE SYMBOL "o" INDICATES A CONCRETE MONUMENT 4 INCHES IN DIAMETER, 36 INCHES IN LENGTH, ENCASED A 1/2 INCH DIAMETER x 36 INCH LONG STEEL ROD.
- 4) THE SYMBOL "•" INDICATES A FOUND CONCRETE MONUMENT 4 INCHES IN DIAMETER, ENCASED A 1/2 INCH DIAMETER STEEL ROD.
- 5) LOT CORNERS ARE MARKED WITH 3/4 INCH DIAMETER x 18 INCH LONG STEEL PIPES WITH YELLOW PLASTIC CAPS MARKED "MAB 33971".
- 6) THE SYMBOL (R) INDICATES A RADIAL LINE.
- 7) THE SYMBOL (NR) INDICATES A NON-RADIAL LINE.
- 8) BEARINGS WERE ESTABLISHED FROM MICHIGAN DEPARTMENT OF TRANSPORTATION'S FILE No. 47-4-2, ROUTE I-96, CONTROL SECTION 47065, SHEET No. 40 AND RECORDED IN LIBER 393, PAGE 108, LIVINGSTON COUNTY RECORDS.

ALL DRAIN EASEMENTS ARE UNDER THE JURISDICTION OF THE LIVINGSTON COUNTY DRAIN COMMISSIONER AND THE PEBBLE CREEK DRAIN DRAINAGE DISTRICT.

## CURVE TABLE

CURVE	RADIUS	LENGTH	CHORD	BEARING	DELTA
C18	75.00'	350.19'	108.34'	S77°21'53"W	267°31'11"
C21	533.00'	126.33'	126.03'	N04°14'31"W	13°34'47"
C22	467.00'	110.69'	110.42'	N04°14'31"W	13°34'47"
C23	817.00'	59.59'	59.58'	S00°27'30"W	04°10'45"
C24	35.00'	58.03'	51.60'	N49°07'32"W	94°59'19"
C25	35.00'	58.03'	51.60'	S35°53'09"W	94°59'19"
C26	883.00'	533.26'	525.20'	N14°45'13"W	34°36'10"
C27	817.00'	291.55'	290.01'	S21°49'54"E	20°26'47"
C37	347.00'	524.12'	475.70'	S40°06'35"W	86°32'28"
C38	413.00'	623.81'	566.18'	N40°06'35"E	86°32'28"

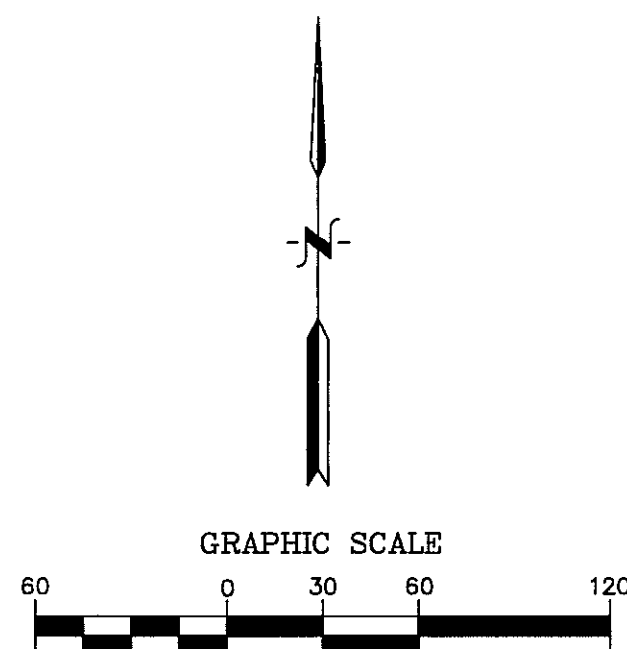


**DESINE INC**  
**ENGINEERS**

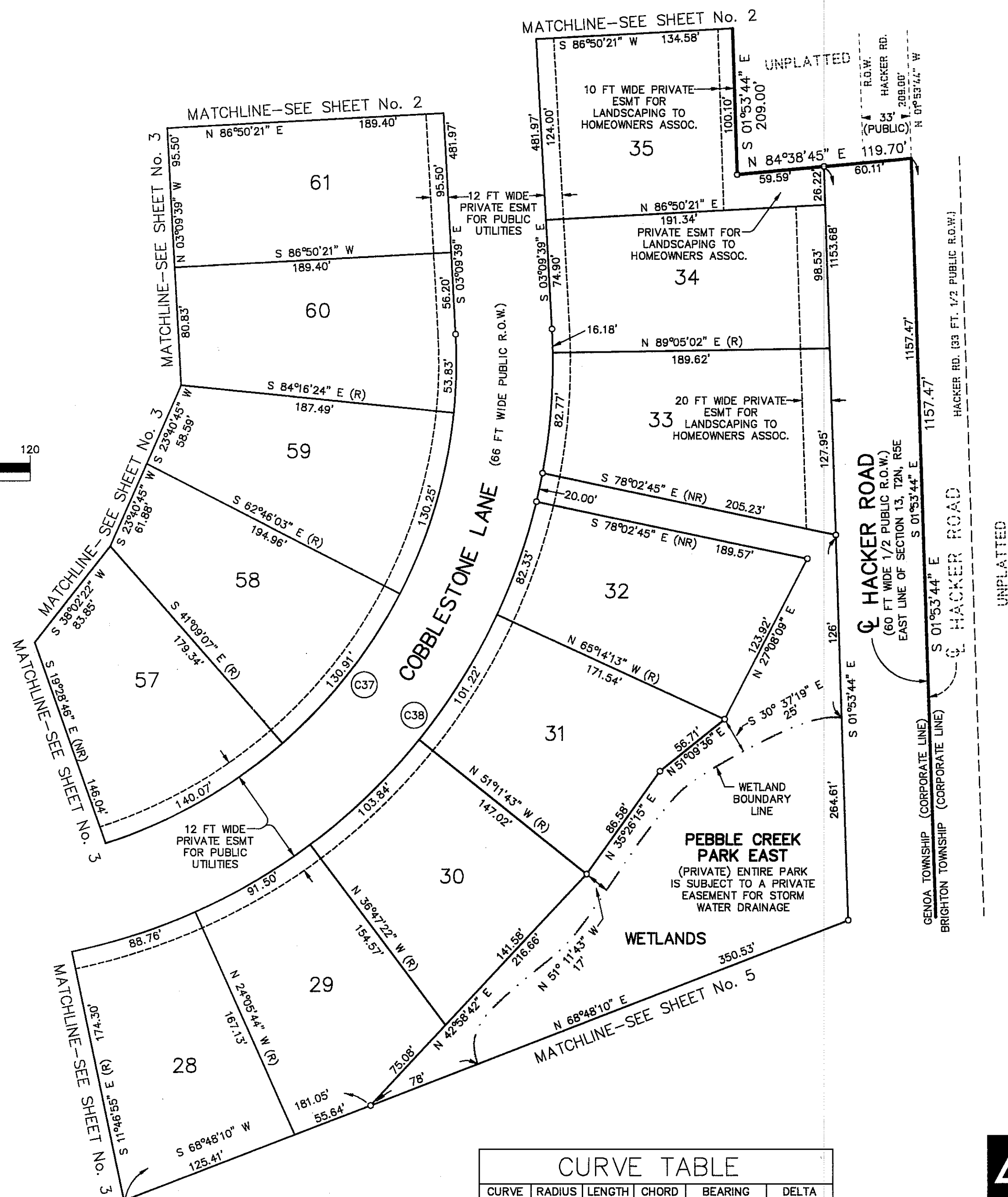
7011 GRAND RIVER AVE.  
BRIGHTON, MICHIGAN 48114  
(810) 227-9533

MARY A. BARNWELL  
PROFESSIONAL SURVEYOR  
SURVEYOR/NO. 33971

LOCATION MAP  
NO SCALE



( IN FEET )  
1 INCH = 60 FEET



CURVE TABLE

CURVE	RADIUS	LENGTH	CHORD	BEARING	DELTA
C37	347.00'	524.12'	475.70'	S40°06'35"W	86°32'28"
C38	413.00'	623.81'	566.18'	S40°06'35"W	86°32'28"

LEGEND:

- 1) ALL DIMENSIONS SHOWN ARE IN FEET.
- 2) ALL CURVILINEAR DIMENSIONS SHOWN ARE ARC LENGTHS.
- 3) THE SYMBOL "O" INDICATES A CONCRETE MONUMENT 4 INCHES IN DIAMETER, 36 INCHES IN LENGTH, ENCASING A 1/2 INCH DIAMETER x 36 INCH LONG STEEL ROD.
- 4) THE SYMBOL "●" INDICATES A FOUND CONCRETE MONUMENT 4 INCHES IN DIAMETER, ENCASING A 1/2 INCH DIAMETER STEEL ROD.
- 5) LOT CORNERS ARE MARKED WITH 3/4 INCH DIAMETER x 18 INCH LONG STEEL PIPES WITH YELLOW PLASTIC CAPS MARKED "MAB 33971".
- 6) THE SYMBOL (R) INDICATES A RADIAL LINE.
- 7) THE SYMBOL (NR) INDICATES A NON-RADIAL LINE.
- 8) BEARINGS WERE ESTABLISHED FROM MICHIGAN DEPARTMENT OF TRANSPORTATION'S FILE NO. 47-4-2, ROUTE 1-96, CONTROL SECTION 47065, SHEET NO. 40 AND RECORDED IN LIBER 393, PAGE 108, LIVINGSTON COUNTY RECORDS.

ALL DRAIN EASEMENTS ARE UNDER THE JURISDICTION  
OF THE LIVINGSTON COUNTY DRAIN COMMISSIONER  
AND THE PEBBLE CREEK DRAIN DRAINAGE DISTRICT.



MARY A. BARNWELL  
PROFESSIONAL SURVEYOR  
SURVEYOR NO. 33971



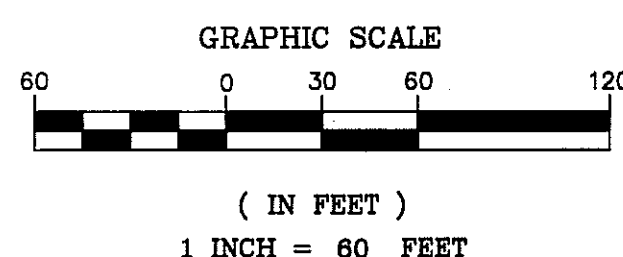
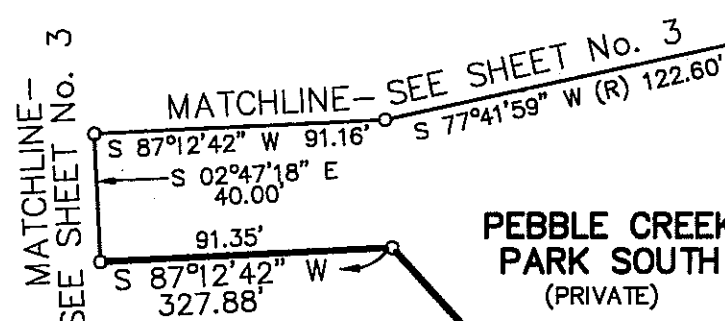
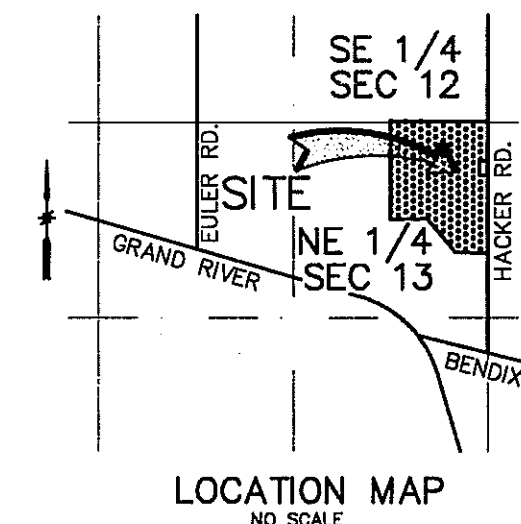
**DESINE INC**  
**ENGINEERS**

7011 GRAND RIVER AVE.  
BRIGHTON, MICHIGAN 48114  
(810) 227-9533



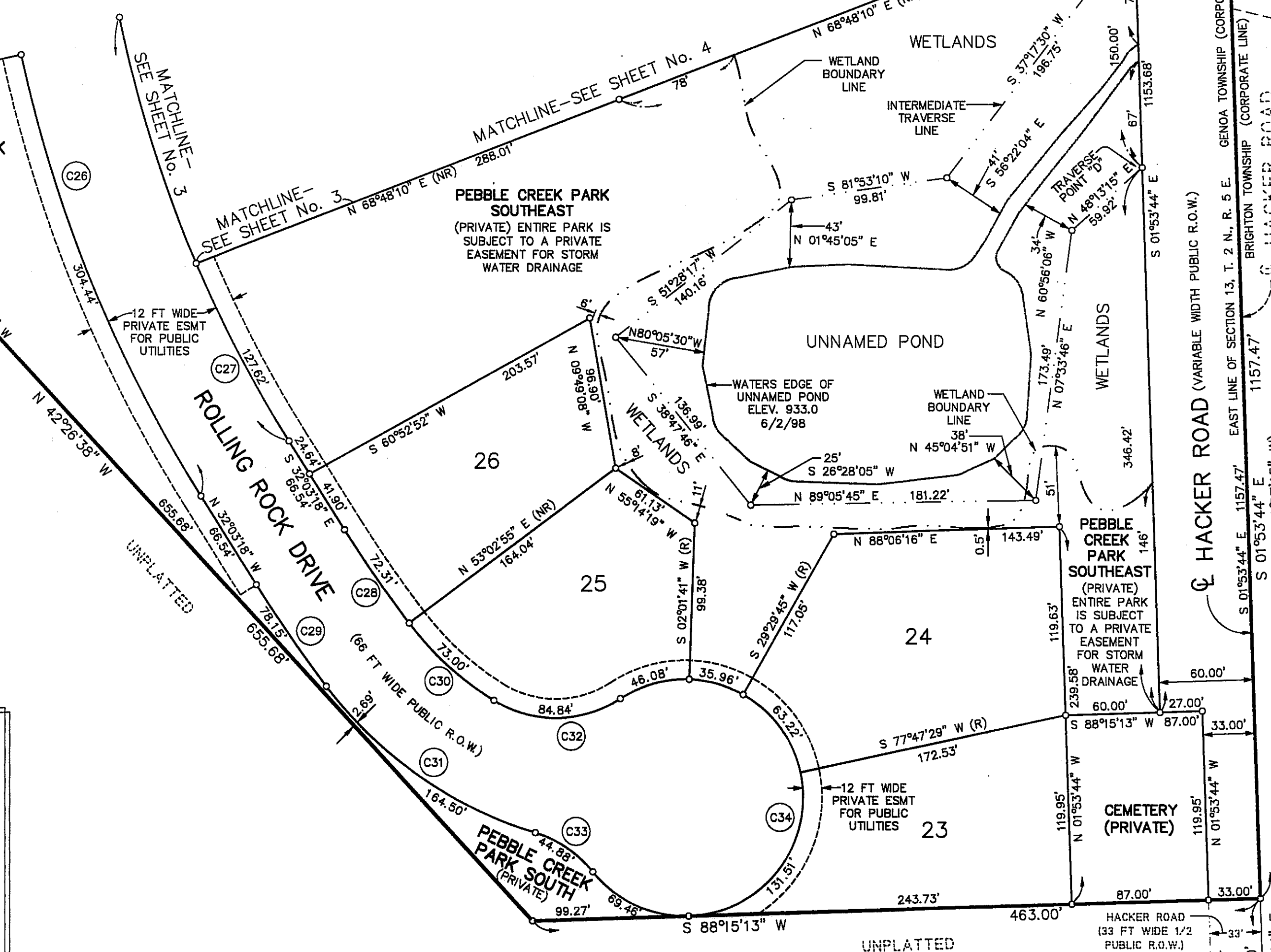
# PEBBLE CREEK

A Subdivision of Part of the Northeast 1/4 of Section 13  
and Part of the Southeast 1/4 of Section 12  
Town 2 North, Range 5 East,  
Genoa Township, Livingston County, Michigan



- LEGEND:**
- 1) ALL DIMENSIONS SHOWN ARE IN FEET.
  - 2) ALL CURVILINEAR DIMENSIONS SHOWN ARE ARC LENGTHS.
  - 3) THE SYMBOL "o" INDICATES A CONCRETE MONUMENT 4 INCHES IN DIAMETER, 36 INCHES IN LENGTH, ENCASED A 1/2 INCH DIAMETER x 36 INCH LONG STEEL ROD.
  - 4) THE SYMBOL "•" INDICATES A FOUND CONCRETE MONUMENT 4 INCHES IN DIAMETER, ENCASED A 1/2 INCH DIAMETER STEEL ROD.
  - 5) LOT CORNERS ARE MARKED WITH 3/4 INCH DIAMETER x 18 INCH LONG STEEL PIPES WITH YELLOW PLASTIC CAPS MARKED "MAB 33971".
  - 6) THE SYMBOL (R) INDICATES A RADIAL LINE.
  - 7) THE SYMBOL (NR) INDICATES A NON-RADIAL LINE.
  - 8) BEARINGS WERE ESTABLISHED FROM MICHIGAN DEPARTMENT OF TRANSPORTATION'S FILE No. 47-4-2, ROUTE I-96, CONTROL SECTION 47065, SHEET No. 40 AND RECORDED IN LIBER 393, PAGE 108, LIVINGSTON COUNTY RECORDS.

ALL DRAIN EASEMENTS ARE UNDER THE JURISDICTION OF THE LIVINGSTON COUNTY DRAIN COMMISSIONER AND THE PEBBLE CREEK DRAIN DRAINAGE DISTRICT.



CURVE	RADIUS	LENGTH	CHORD	BEARING	DELTA
C26	883.00'	533.26'	525.20'	S14°45'13"E	34°36'10"
C27	817.00'	291.55'	290.01'	S21°49'54"E	20°26'47"
C28	817.00'	72.31'	72.29'	S34°35'26"E	05°04'16"
C29	883.00'	78.15'	78.13'	S34°35'26"E	05°04'16"
C30	197.00'	73.00'	72.58'	S47°44'30"E	21°13'53"
C31	263.00'	164.50'	161.83'	S55°02'41"E	35°50'14"
C32	75.00'	84.84'	80.39'	N89°14'09"E	64°48'48"
C33	75.00'	44.88'	44.21'	N55°49'20"W	34°16'55"
C34	75.00'	346.23'	111.04'	S09°04'28"W	264°29'22"

**DESINE INC ENGINEERS**  
7011 GRAND RIVER AVE.  
BRIGHTON, MICHIGAN 48114  
(810) 227-9533



MARY A. BARNWELL  
PROFESSIONAL SURVEYOR  
SURVEYOR NO. 33971

WOODLAND LAKE WEST  
LIVINGSTON COUNTY CONDOMINIUM SUBDIVISION PLAN No. 30  
LIBER 1484, PAGES 62 THROUGH 68

UNPLATTED

UNPLATTED