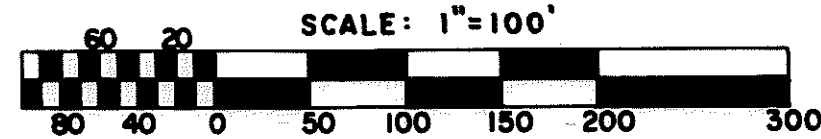
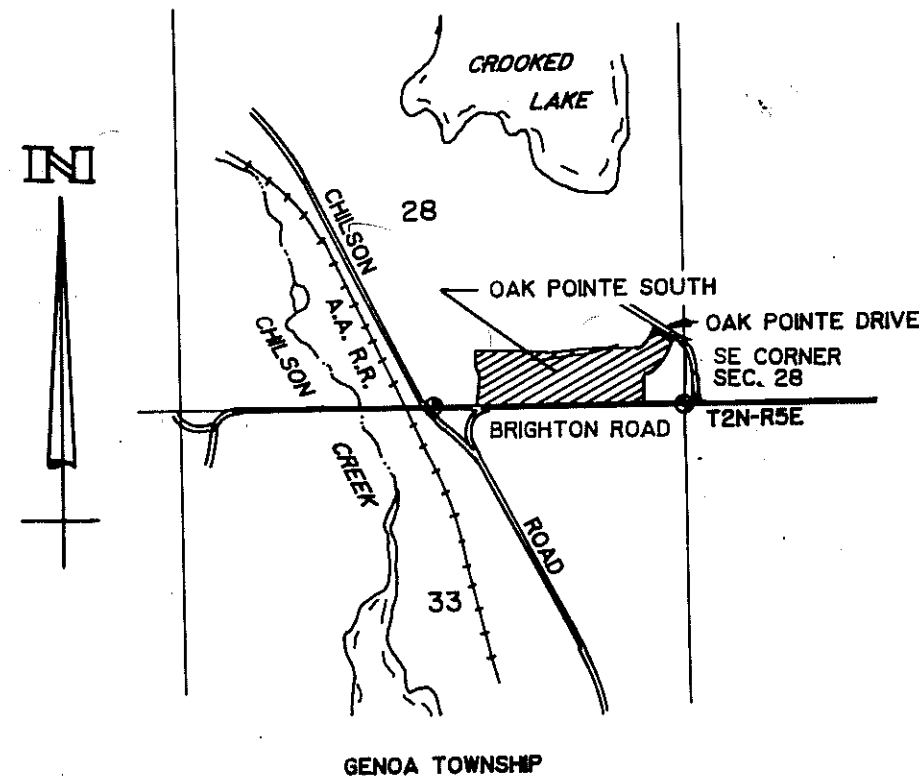


"OAK POINTE SOUTH"

A SUBDIVISION OF PART OF THE SE 1/4 OF SECTION 28
T2N-R5E, GENOA TOWNSHIP, LIVINGSTON COUNTY, MICH.

LOCATION MAP
1" = 2000'



LEGEND:

All dimensions are shown in feet.

All curvilinear dimensions are shown along the arc.

The symbol "o" indicates a concrete monument.

All lot markers are 1/2 inch iron rods and are 18 inches in length.

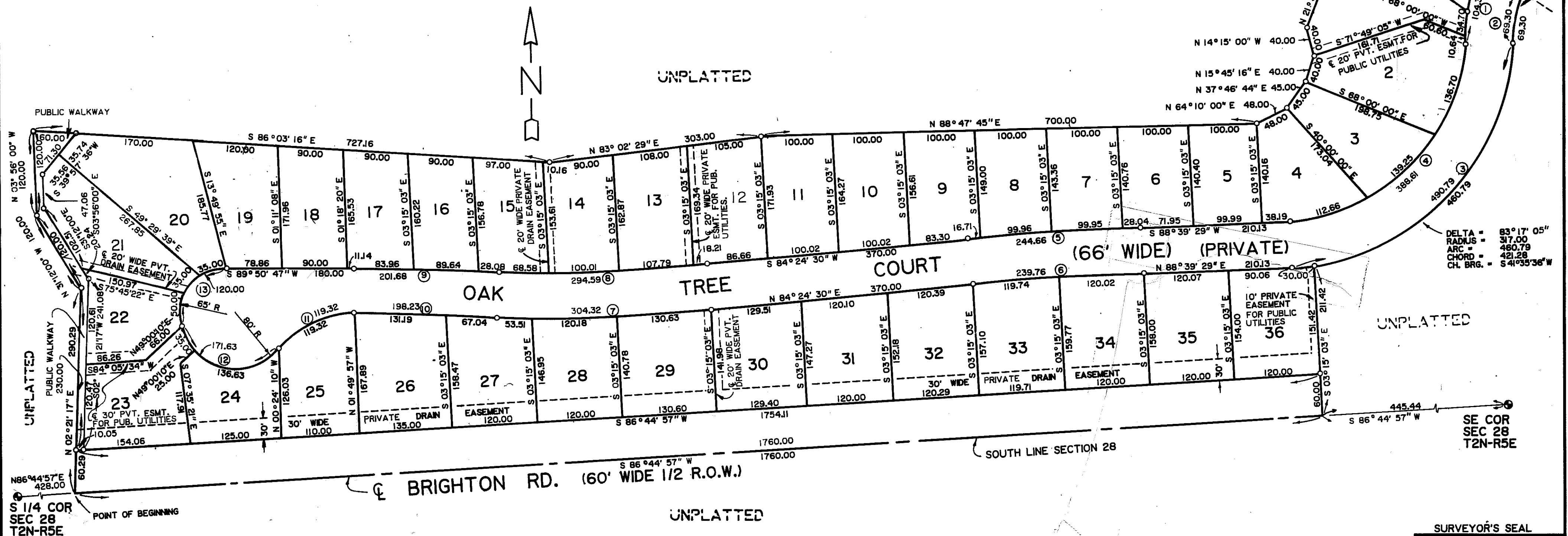
Bearings were established from the recorded Plat of "Mystic Lake Hills Subdivision" as recorded in Liber 17, on pages 1-4, Livingston County Records.

CURVE DATA

NO.	RAD.	DELTA	ARC	CHORD	BEARING
1.	263.00	22°44'29"	104.38	103.70	N 11°19'18" E
2.	197.00	20°09'20"	69.30	68.94	S 10°01'44" W
3.	317.00	88°42'25"	490.79	443.22	N 44°18'17" E
4.	251.00	88°42'25"	388.61	350.94	S 44°18'17" W
5.	3298.32	04°15'00"	244.66	244.60	S 86°32'00" W
6.	3232.32	04°15'00"	239.76	239.71	N 86°32'00" E
7.	2066.30	08°26'18"	304.32	304.04	N 88°37'39" E
8.	2000.30	08°26'18"	294.59	294.33	S 88°37'39" W
9.	3851.84	03°00'00"	201.68	201.66	N 88°39'12" W
10.	3785.84	03°00'00"	198.23	198.20	S 88°39'12" E
11.	140.40	48°41'41"	119.32	115.76	N 65°29'56" E
12.	80.00	122°55'06"	171.63	140.56	S 77°23'21" E
13.	65.00	105°46'37"	120.00	103.67	S 36°57'30" W

DELTA = 12°51'46"
RADIUS = 263.00
ARC = 59.04
CHORD = 58.92
CH. BRG. = N 16°15'39" E

DELTA = 20°09'22"
RADIUS = 197.00
ARC = 69.30
CHORD = 68.94
CH. BRG. = S 10°01'44" W



NOTE:

All drain easements and retention areas are under the jurisdiction of the Livingston County Drain Commission.

PREPARED & DRAFTED BY:
BOSS ENGINEERING COMPANY
3121 East Grand River
Howell, Michigan 48843

Gary R. Boss
Surveyor & Engineer

SURVEYOR'S SEAL

