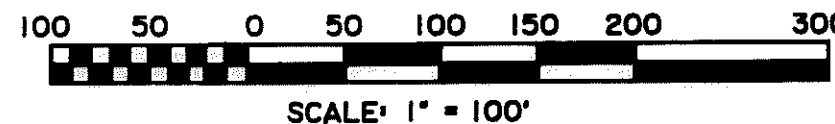
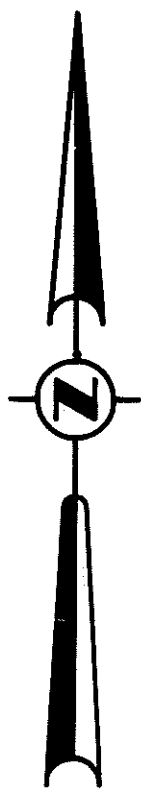


# OAK POINTE NORTH NO. 3

A SUBDIVISION OF PART OF THE NW 1/4 & SW 1/4 OF SEC.  
28, T2N-R5E GENOA TOWNSHIP, LIVINGSTON COUNTY, MICH.

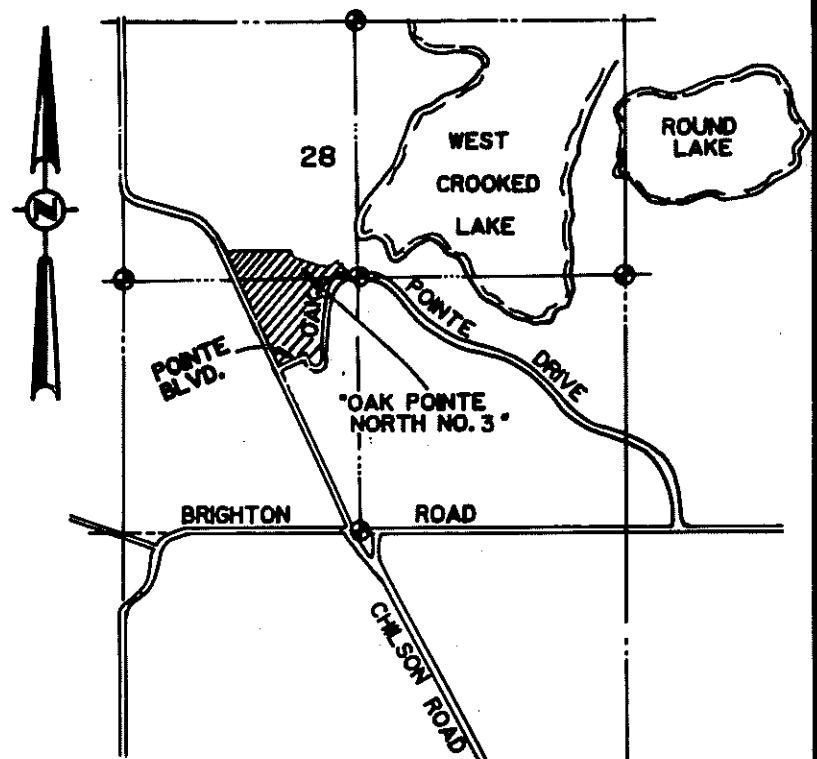
SHEET 1 OF 3 SHEETS



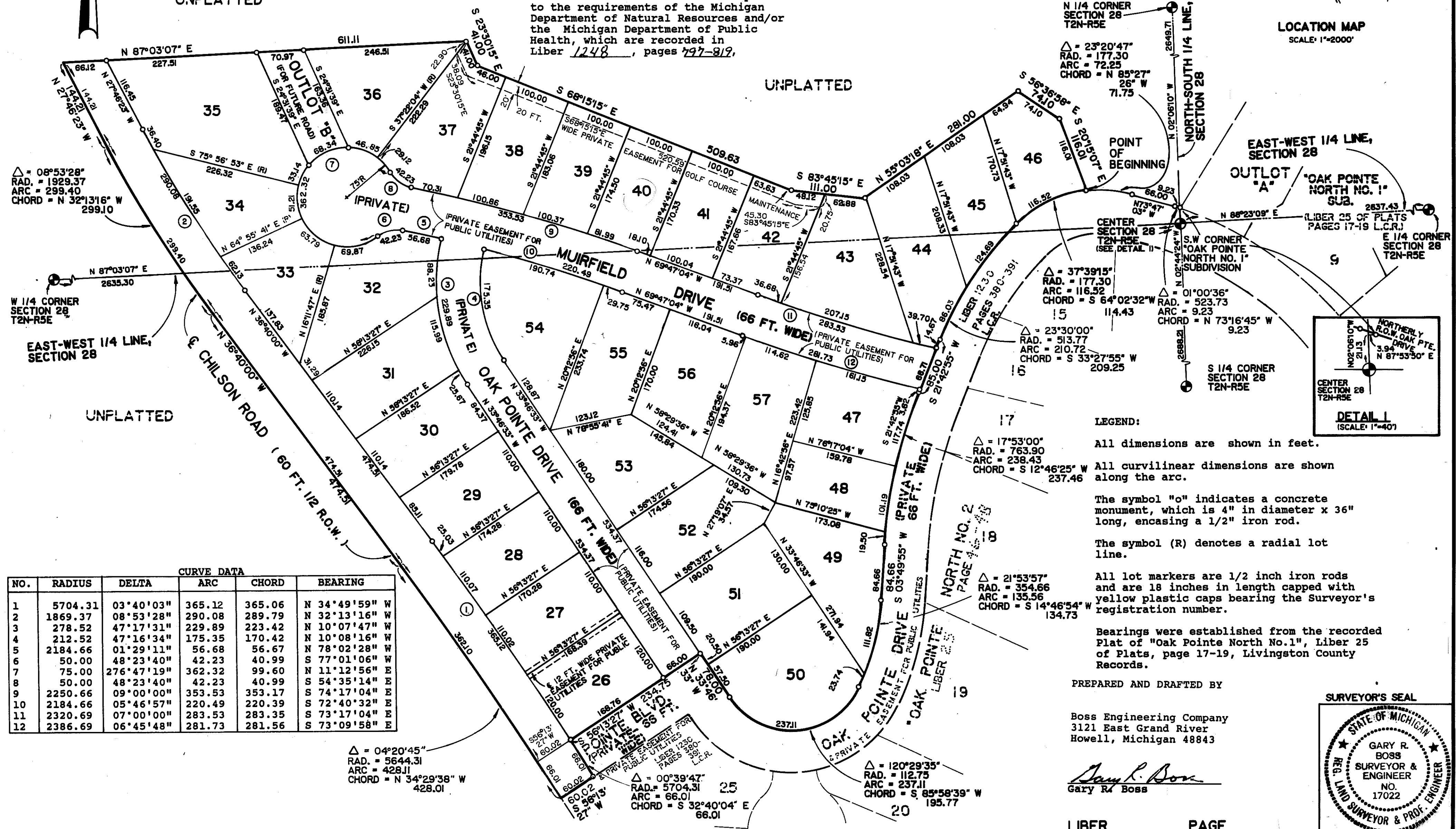
This plat is subject to restrictions required by Act 288 of 1967, as amended on certain lots with respect to the requirements of the Michigan Department of Natural Resources and/or the Michigan Department of Public Health, which are recorded in Liber 1248, pages 797-819.

UNPLATTED

UNPLATTED



LOCATION MAP  
SCALE: 1" = 2000'



CURVE DATA					
NO.	RADIUS	DELTA	ARC	CHORD	BEARING
1	5704.31	03°40'03"	365.12	365.06	N 34°49'59" W
2	1869.37	08°53'28"	290.08	289.79	N 32°13'16" W
3	278.52	47°17'31"	229.89	223.42	N 10°07'47" W
4	212.52	47°16'34"	175.35	170.42	N 10°08'16" W
5	2184.66	01°29'11"	56.68	56.67	N 78°02'28" W
6	50.00	48°23'40"	42.23	40.99	S 77°01'06" W
7	75.00	276°47'19"	362.32	99.60	N 11°12'56" E
8	50.00	48°23'40"	42.23	40.99	S 54°35'14" E
9	2250.66	09°00'00"	353.17	353.17	S 74°17'04" E
10	2184.66	05°46'57"	220.49	220.39	S 72°40'32" E
11	2320.69	07°00'00"	283.53	283.35	S 73°17'04" E
12	2386.69	06°45'48"	281.73	281.56	S 73°09'58" E

△ = 04°20'45"  
RAD. = 5644.31  
ARC = 428.11  
CHORD = N 34°29'38" W  
428.01

△ = 00°39'47"  
RAD. = 5704.31  
ARC = 66.01  
CHORD = S 32°40'04" E  
66.01

△ = 120°29'35"  
RAD. = 112.75  
ARC = 237.11  
CHORD = S 85°58'39" W  
195.77

#### LEGEND:

All dimensions are shown in feet.

All curvilinear dimensions are shown along the arc.

The symbol "o" indicates a concrete monument, which is 4" in diameter x 36" long, encasing a 1/2" iron rod.

The symbol (R) denotes a radial lot line.

All lot markers are 1/2 inch iron rods and are 18 inches in length capped with yellow plastic caps bearing the Surveyor's registration number.

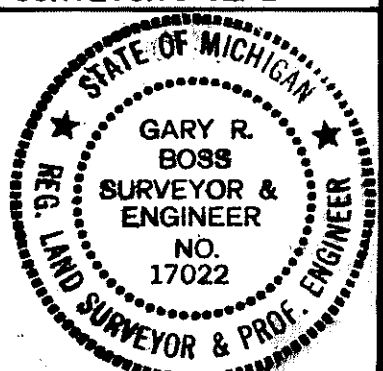
Bearings were established from the recorded Plat of "Oak Pointe North No. 1", Liber 25 of Plats, page 17-19, Livingston County Records.

PREPARED AND DRAFTED BY

Boss Engineering Company  
3121 East Grand River  
Howell, Michigan 48843

*Gary R. Boss*  
Gary R. Boss

SURVEYOR'S SEAL



LIBER \_\_\_\_\_ PAGE \_\_\_\_\_