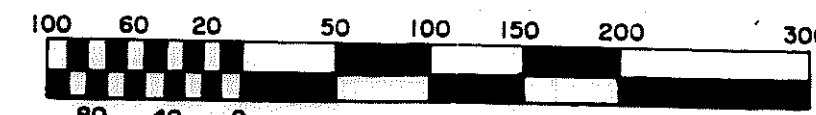
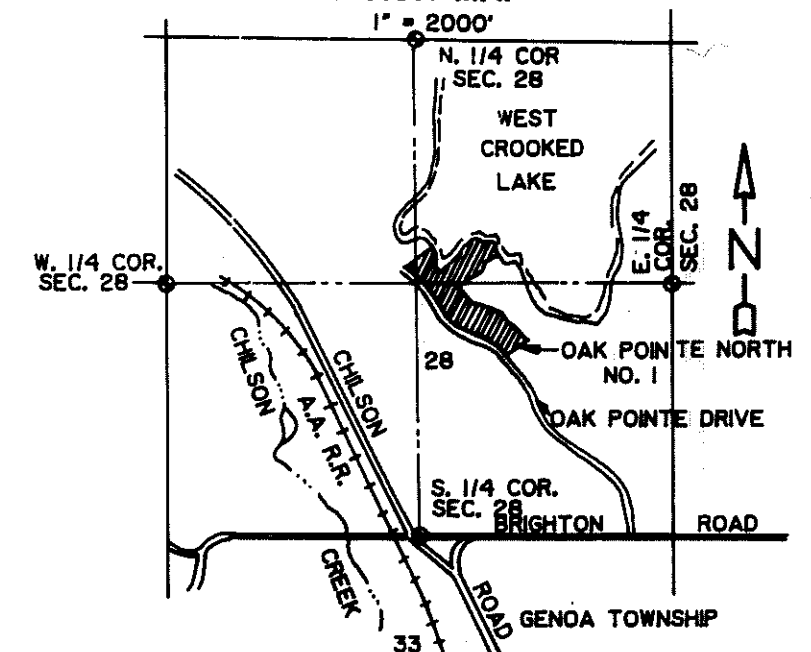


OAK POINTE NORTH NO. 1

A SUBDIVISION OF PART OF THE NE 1/4 AND
PART OF THE SE 1/4 OF SECTION 28,
GENOA TOWNSHIP, LIVINGSTON COUNTY, MICHIGAN

SHEET 1
OF 3 SHEETS

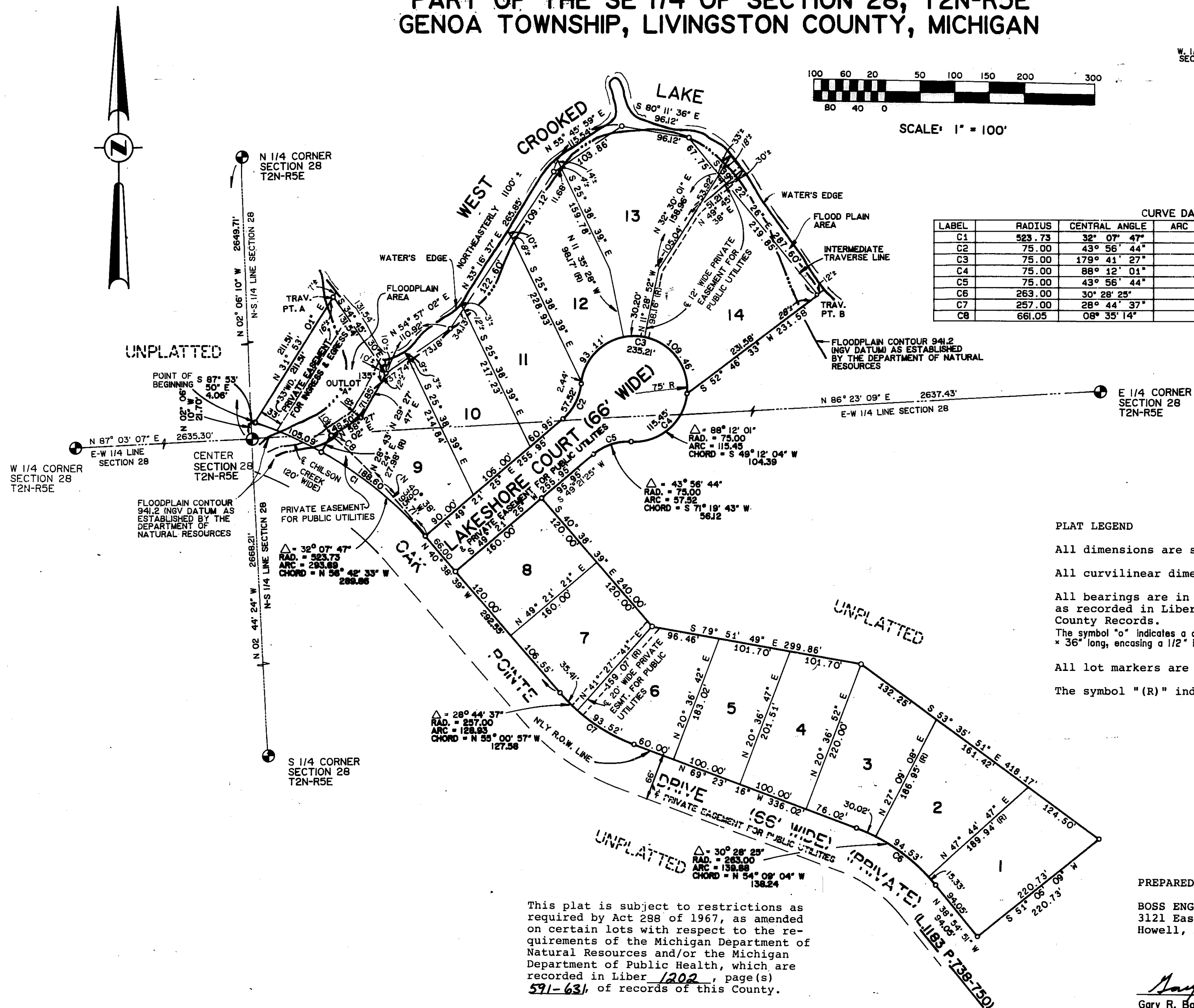
LOCATION MAP



SCALE: 1" = 100'

CURVE DATA

LABEL	RADIUS	CENTRAL ANGLE	ARC LENGTH	CHORD LENGTH	CHORD BEARING
C1	523.73	32° 07' 47"	293.69	289.86	N 56° 42' 33" W
C2	75.00	43° 56' 44"	57.52	56.12	N 27° 22' 59" E
C3	75.00	179° 41' 27"	235.21	150.00	S 84° 44' 40" E
C4	75.00	88° 12' 01"	115.45	104.39	S 49° 12' 04" W
C5	75.00	43° 56' 44"	57.52	56.12	S 71° 19' 43" W
C6	263.00	30° 28' 25"	139.88	138.24	N 54° 09' 04" W
C7	257.00	28° 44' 37"	128.93	127.58	N 55° 00' 57" W
C8	661.05	08° 35' 14"	99.07	98.98	N 44° 56' 16" W



PLAT LEGEND

All dimensions are shown in feet.

All curvilinear dimensions are shown along the arc.

All bearings are in relation to "Oak Pointe South", as recorded in Liber 33, page 42-45, Livingston County Records.

The symbol "o" indicates a concrete monument, which is 4" in diameter x 36" long, encasing a 1/2" iron rod.

All lot markers are 1/2" iron rods and are 18" in length.

The symbol "(R)" indicates a radial lot line.

This plat is subject to restrictions as required by Act 298 of 1967, as amended on certain lots with respect to the requirements of the Michigan Department of Natural Resources and/or the Michigan Department of Public Health, which are recorded in Liber 1202, page(s) 591-631, of records of this County.

PREPARED & DRAFTED BY:
BOSS ENGINEERING COMPANY
3121 East Grand River
Howell, Michigan 48843

Gary R. Boss
Gary R. Boss

SURVEYOR'S SEAL

