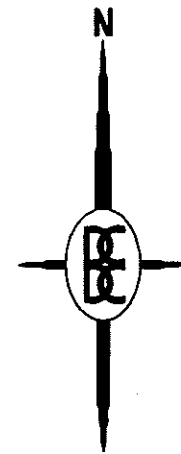
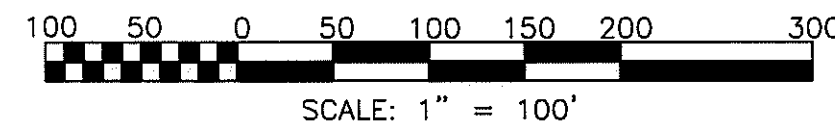


THIS PLAT IS SUBJECT TO RESTRICTIONS
REQUIRED BY ACT 288 OF 1967, AS
AMENDED ON CERTAIN LOTS WITH RESPECT
TO THE REQUIREMENTS OF THE MICHIGAN
DEPARTMENT OF ENVIRONMENTAL QUALITY
WHICH IS RECORDED IN LIBER 2103
PAGES 113-105 OF RECORDS OF THIS COUNTY.

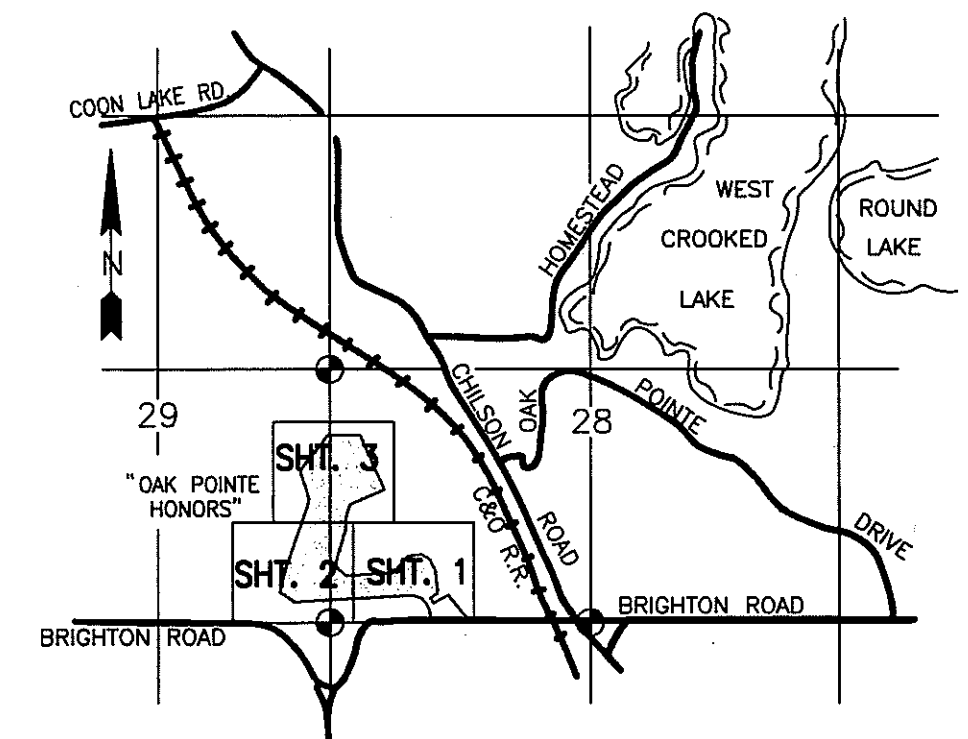
OAK POINTE HONORS

A PART OF THE SW 1/4 OF SECTION 28 AND
OF THE SE 1/4 OF SECTION 29, T2N-R5E,
GENOA TOWNSHIP, LIVINGSTON COUNTY, MICHIGAN

SHEET 1 OF 5 SHEETS



W 1/4 CORNER
SECTION 28
T2N-R5E
L.S.C. NO. 956



LOCATION MAP

SCALE: 1" = 2000'

NOTE:
ALL DRAIN EASEMENTS AND DETENTION AREAS ARE
UNDER THE JURISDICTION OF THE LIVINGSTON
COUNTY DRAIN COMMISSIONER. USE OF THE WORD
"PRIVATE" DOES NOT LIMIT IN ANY WAY THE SCOPE
OF THE EASEMENT GRANTED TO THE LIVINGSTON
COUNTY DRAIN COMMISSIONER.

LEGEND:

ALL DIMENSIONS ARE SHOWN IN FEET.

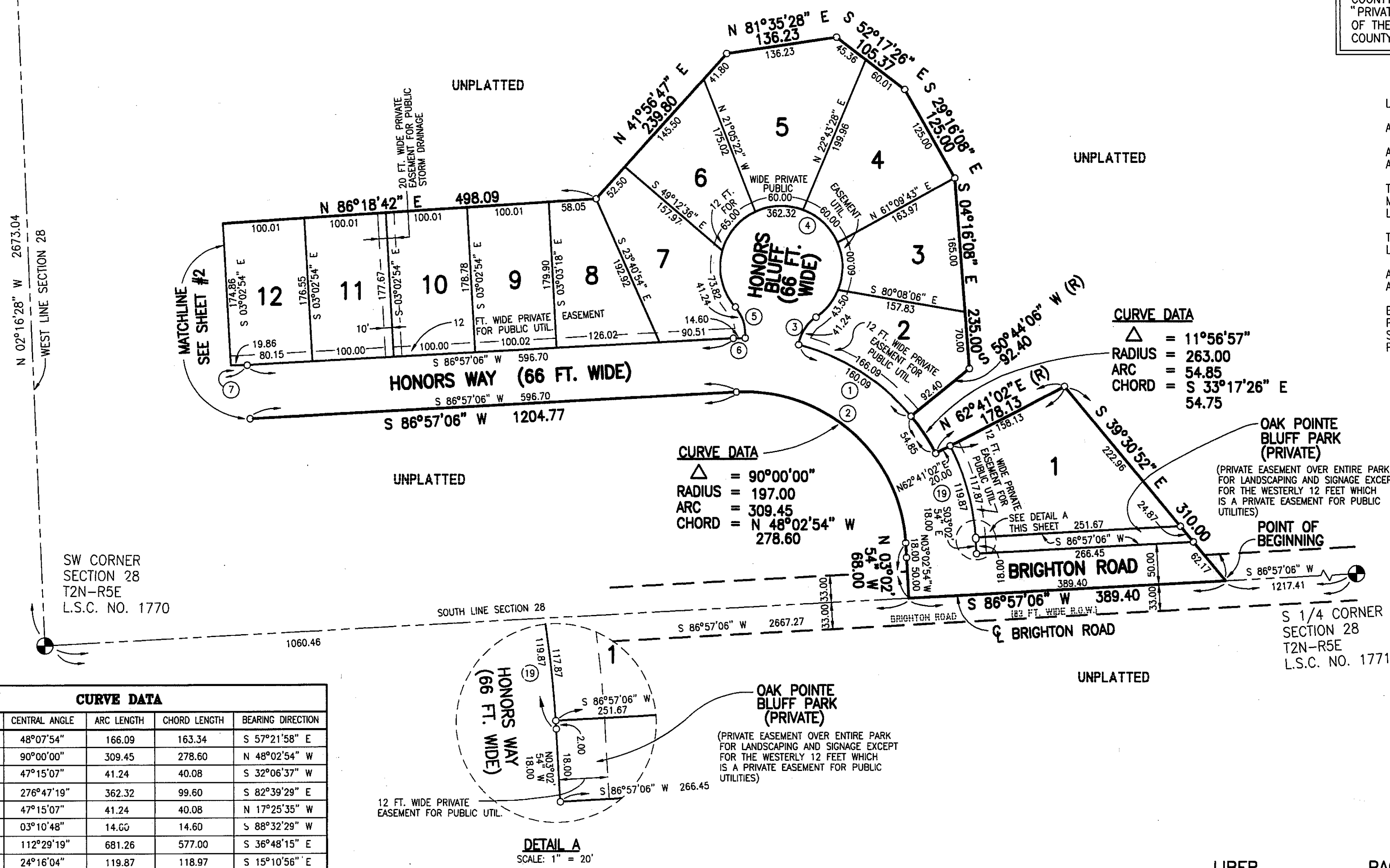
ALL CURVILINEAR DIMENSIONS ARE SHOWN
ALONG THE ARC.

THE SYMBOL "O" INDICATES A CONCRETE
MONUMENT, WHICH IS 4" IN DIAMETER X 36"
LONG, ENCASED A 1/2" IRON ROD.

THE SYMBOL (R) DENOTES A RADIAL LOT
LINE.

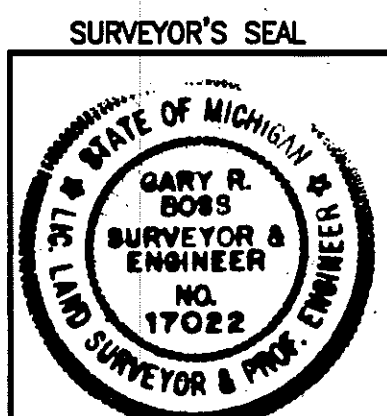
ALL LOT MARKERS ARE 1/2 INCH IRON RODS
AND ARE 18 INCHES IN LENGTH. (NOT CAPPED)

BEARINGS WERE ESTABLISHED FROM THE RECORDED
PLAT OF "OAK POINTE HIGHLANDS NO. 2" A
SUBDIVISION AS RECORDED IN LIBER 28 OF PLATS,
PAGES 43-45, LIVINGSTON COUNTY RECORDS.



PREPARED AND DRAFTED BY:
BOSS ENGINEERING COMPANY
3121 EAST GRAND RIVER
HOWELL, MICHIGAN 48843

Gary R. Boss
GARY R. BOSS



CERTIFIED TRUE COPY OF
RECORDED PLAT
BY DEPARTMENT OF CONSUMER
AND INDUSTRY SERVICES

DATE 12-3-96

100 50 0 50 100 150 200 300

SCALE: 1" = 100'

A detailed map of the area around Coon Lake, Wisconsin. The map shows Coon Lake Rd at the top, which runs horizontally. A vertical line represents Highway 29. To the right of Highway 29, a diagonal line represents Highway 28. Brighton Road runs horizontally at the bottom. A road labeled 'OAK POINTE DRIVE' runs diagonally from the top right towards the bottom right. Another road labeled 'GILSON ROAD' runs diagonally from the top center towards the bottom right. A road labeled 'C&D R.T.' runs diagonally from the center towards the bottom right. The map includes several lakes: Coon Lake (top left), West Crooked Lake (top right), and Round Lake (far right). A north arrow is located in the upper left corner. Three specific locations are marked with dots and labeled: 'SHT. 1' (near the intersection of Brighton Road and Oak Pointe Drive), 'SHT. 2' (near the intersection of Brighton Road and Gilson Road), and 'SHT. 3' (near the intersection of Highway 29 and Gilson Road). The area between Highway 29 and Brighton Road is labeled 'HOMESTEAD'. The area between Highway 28 and Brighton Road is labeled 'OAK POINTE'. The area between Highway 29 and Highway 28 is labeled 'WEST CROOKED LAKE'. The area to the right of Highway 28 is labeled 'ROUND LAKE'. The area between Highway 29 and Highway 28 is also labeled 'GILSON ROAD' and 'C&D R.T.'.

NOTE:
ALL DRAIN EASEMENTS AND DETENTION AREAS ARE UNDER THE JURISDICTION OF THE LIVINGSTON COUNTY DRAIN COMMISSIONER. USE OF THE WORD "PRIVATE" DOES NOT LIMIT IN ANY WAY THE SCOPE OF THE EASEMENT GRANTED TO THE LIVINGSTON COUNTY DRAIN COMMISSIONER.

ALL DIMENSIONS ARE SHOWN IN FEET.

ALL CURVILINEAR DIMENSIONS ARE SHOWN
ALONG THE ARC.

THE SYMBOL "O" INDICATES A CONCRETE MONUMENT, WHICH IS 4" IN DIAMETER X 36" LONG, ENCASING A 1/2" IRON ROD.

THE SYMBOL (R) DENOTES A RADIAL LOT LINE.

ALL LOT MARKERS ARE 1/2 INCH IRON RODS
AND ARE 18 INCHES IN LENGTH. (NOT CAPPED)

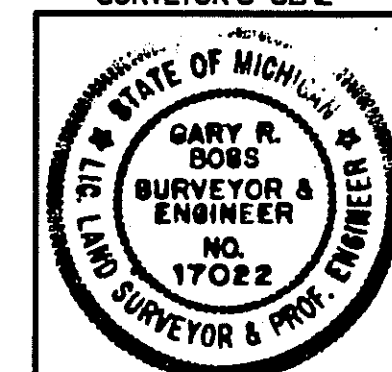
BEARINGS WERE ESTABLISHED FROM THE RECORDED
PLAT OF "OAK POINTE HIGHLANDS NO. 2" A
SUBDIVISION AS RECORDED IN LIBER 28 OF PLATS,
PAGES 43-45, LIVINGSTON COUNTY RECORDS.

PREPARED AND DRAFTED BY:

BOSS ENGINEERING COMPANY
3121 EAST GRAND RIVER
HOWELL, MICHIGAN 48843

Gary R. Boss
GARY R. BOSS

SURVEYOR'S SEAL



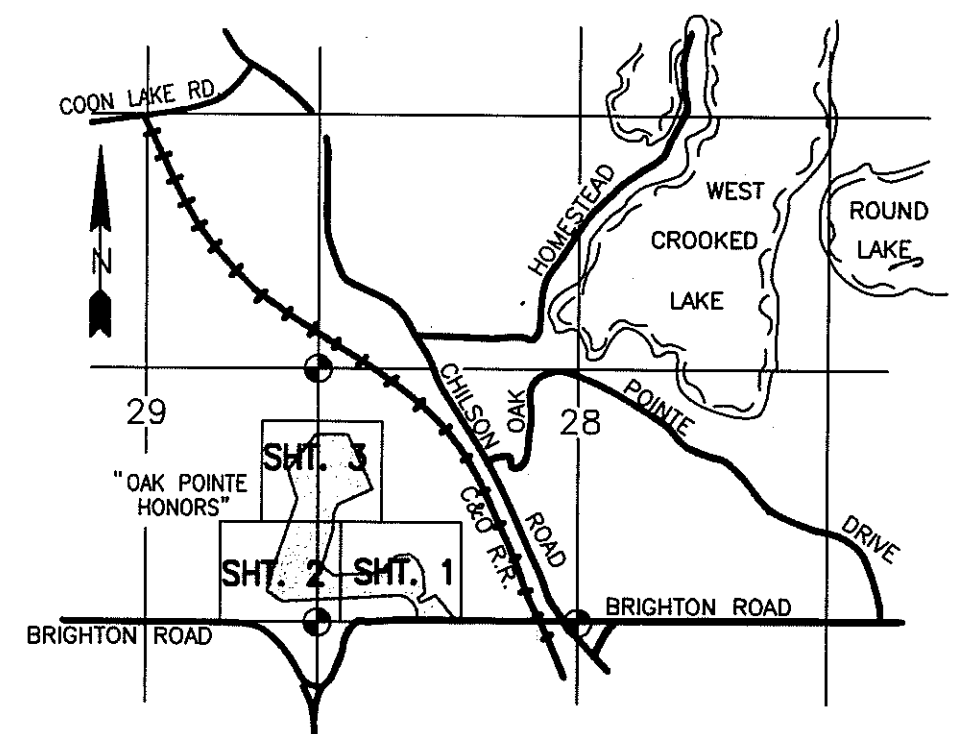
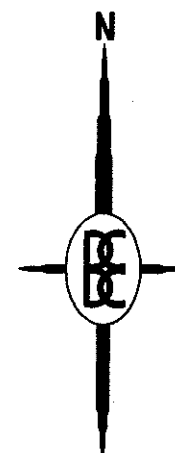
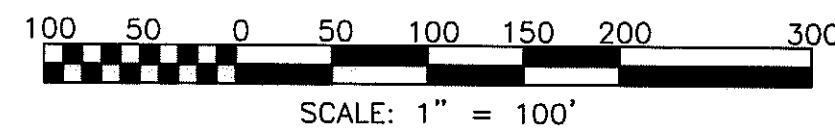
LIBER PAGE

THIS PLAT IS SUBJECT TO RESTRICTIONS
REQUIRED BY ACT 288 OF 1967, AS
AMENDED ON CERTAIN LOTS WITH RESPECT
TO THE REQUIREMENTS OF THE MICHIGAN
DEPARTMENT OF ENVIRONMENTAL QUALITY
WHICH IS RECORDED IN LIBER-2103
PAGES 813-905 OF RECORDS OF THIS COUNTY.

OAK POINTE HONORS

A PART OF THE SW 1/4 OF SECTION 28 AND
OF THE SE 1/4 OF SECTION 29, T2N-R5E,
GENOA TOWNSHIP, LIVINGSTON COUNTY, MICHIGAN

SHEET 3 OF 5 SHEETS



LOCATION MAP
SCALE: 1" = 2000'

NOTE:
ALL DRAIN EASEMENTS AND DETENTION AREAS ARE
UNDER THE JURISDICTION OF THE LIVINGSTON
COUNTY DRAIN COMMISSIONER. USE OF THE WORD
"PRIVATE" DOES NOT LIMIT IN ANY WAY THE SCOPE
OF THE EASEMENT GRANTED TO THE LIVINGSTON
COUNTY DRAIN COMMISSIONER.

LEGEND:

ALL DIMENSIONS ARE SHOWN IN FEET.

ALL CURVILINEAR DIMENSIONS ARE SHOWN
ALONG THE ARC.

THE SYMBOL "O" INDICATES A CONCRETE
MONUMENT, WHICH IS 4" IN DIAMETER X 36"
LONG, ENCASING A 1/2" IRON ROD.

THE SYMBOL (R) DENOTES A RADIAL LOT
LINE.

ALL LOT MARKERS ARE 1/2 INCH IRON RODS
AND ARE 18 INCHES IN LENGTH. (NOT CAPPED)

BEARINGS WERE ESTABLISHED FROM THE RECORDED
PLAT OF "OAK POINTE HIGHLANDS NO. 2" A
SUBDIVISION AS RECORDED IN LIBER 28 OF PLATS,
PAGES 43-45, LIVINGSTON COUNTY RECORDS.

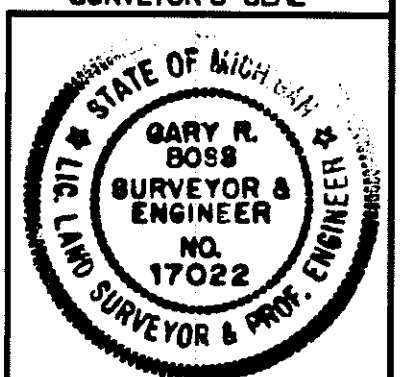
ALL DIMENSIONS SHOWN IN ITALICS *100*
ARE FROM THE WETLANDS TO THE TRAVERSE
OR LOT LINE.

PREPARED AND DRAFTED BY:

BOSS ENGINEERING COMPANY
3121 EAST GRAND RIVER
HOWELL, MICHIGAN 48843

Gary R. Boss
GARY R. BOSS

SURVEYOR'S SEAL



| CURVE DATA | | | | |
|------------|---------|---------------|------------|--------------|
| CURVE | RADIUS | CENTRAL ANGLE | ARC LENGTH | CHORD LENGTH |
| 13 | 7712.22 | 04°07'19" | 554.84 | 554.72 |
| 14 | 7778.22 | 04°07'49" | 560.69 | 560.57 |
| 15 | 50.00 | 63°52'51" | 55.75 | 52.90 |
| 16 | 136.00 | 306°59'38" | 728.70 | 121.38 |
| 17 | 70.00 | 360°00'00" | 439.82 | |
| 18 | 50.00 | 63°07'16" | 55.08 | 52.34 |

