

NOTE:

ALL DRAIN EASEMENTS AND DETENTION AREAS ARE UNDER THE JURISDICTION OF THE LIVINGSTON COUNTY DRAIN COMMISSIONER. USE OF THE WORD "PRIVATE" DOES NOT LIMIT IN ANY WAY THE SCOPE OF THE EASEMENT GRANTED TO THE LIVINGSTON COUNTY DRAIN COMMISSIONER.

OAK POINTE HILLS

A PART OF THE NW 1/4, SE 1/4 & SW 1/4 OF SECTION 27, T2N-R5E, GENOA TOWNSHIP, LIVINGSTON COUNTY MICHIGAN

WEST 1/4 COR.
SEC. 27
T2N-R5E
LSC# 1296

CEN. SEC. 27

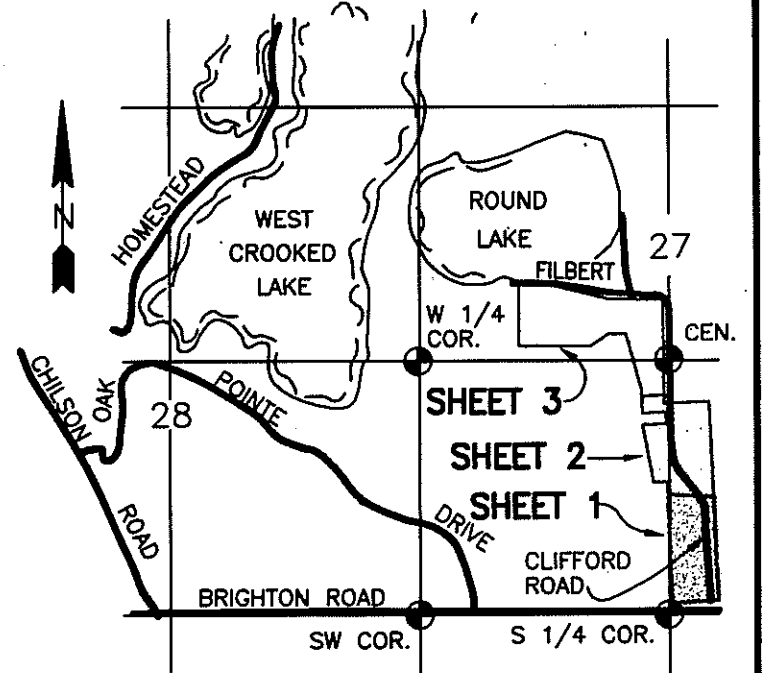
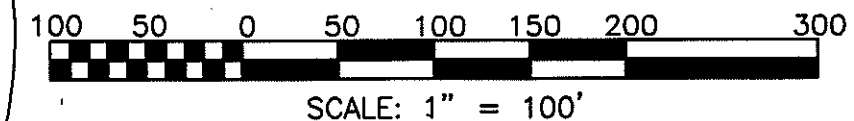
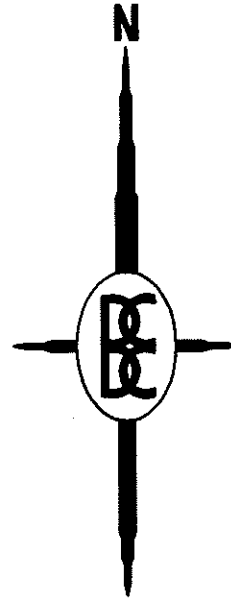
T2N-R5E

LSC# 1296

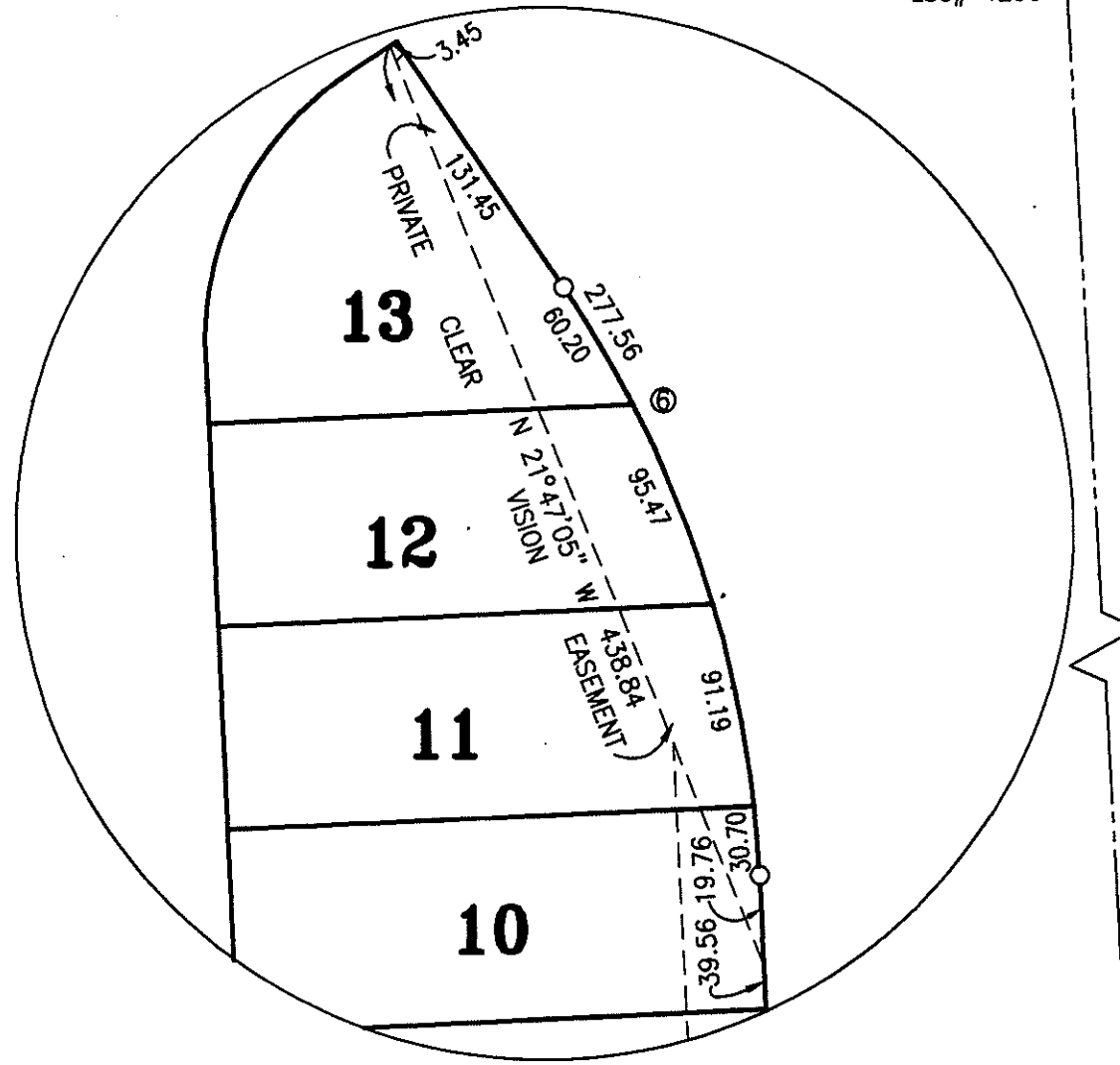
MATCHLINE

SEE SHEET 2

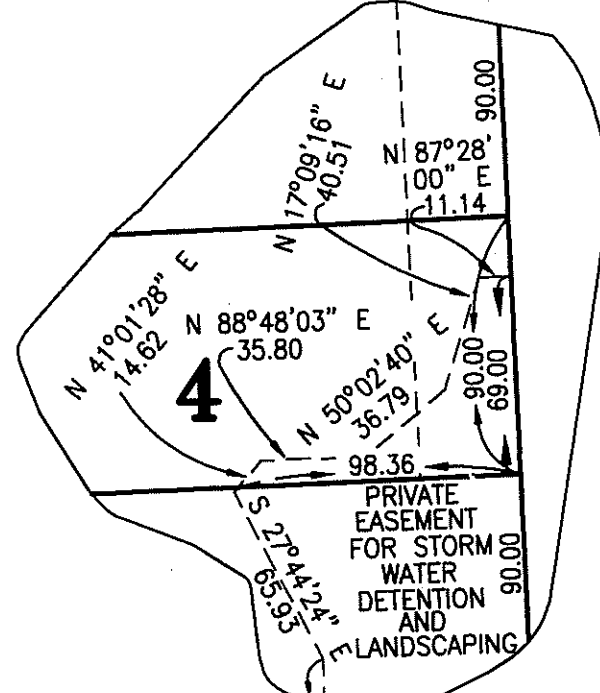
49



LOCATION MAP
SCALE: 1" = 2000'
T2N-R5E



DETAIL 1
NO SCALE



DETAIL 2
NO SCALE

CURVE DATA					
CURVE	RADIUS	CENTRAL ANGLE	ARC LENGTH	CHORD LENGTH	BEARING DIRECTION
1	208.00	58°37'28"	212.82	203.66	S 26°58'20" W
2	142.00	58°37'28"	145.29	139.04	S 26°58'20" W
3	50.00	48°23'40"	42.23	40.99	N 21°51'26" E
4	75.00	27°47'19"	362.32	99.60	N 87°39'36" E
5	50.00	48°23'40"	42.23	40.99	S 26°32'14" E
6	510.00	31°10'56"	277.56	274.15	N 18°07'28" W
7	590.00	31°10'56"	321.10	317.15	N 18°07'28" W

S 02°52'27" E 2668.49

UNPLATTED

WEST LINE, SECTION 27

N 02°49'28" W 1616.92

CROOKED STICK COURT (66' WIDE)

CLIFFORD ROAD (80 FT. WIDE R.O.W.)

S 02°32'00" E 2665.44

(ALL OF SOUTH HILLS PARK IS SUBJECT TO A PRIVATE EASEMENT GRANTED TO THE LIVINGSTON COUNTY ROAD COMMISSION FOR GRADING & MAINTENANCE AND A PRIVATE EASEMENT FOR PUBLIC UTILITIES.)

UNPLATTED

UNPLATTED

(ALL OF NORTH HILLS PARK IS SUBJECT TO A PRIVATE EASEMENT GRANTED TO THE LIVINGSTON COUNTY ROAD COMMISSION FOR GRADING & MAINTENANCE AND A PRIVATE EASEMENT FOR PUBLIC UTILITIES.)

LEGEND:

ALL DIMENSIONS ARE SHOWN IN FEET.

ALL CURVILINEAR DIMENSIONS ARE SHOWN ALONG THE ARC.

THE SYMBOL "O" INDICATES A CONCRETE MONUMENT, WHICH IS 4" IN DIAMETER X 36" LONG, ENCASED A 1/2" STEEL ROD.

THE SYMBOL (R) DENOTES A RADIAL LOT LINE.

THE SYMBOL (NR) DENOTES A NON-RADIAL LOT LINE.

ALL LOT MARKERS ARE 1/2 INCH STEEL RODS AND ARE 18 INCHES IN LENGTH. (NOT CAPPED)

BEARINGS WERE ESTABLISHED FROM THE RECORDED PLAT OF "OAK POINTE HIGHLANDS NO. 2" A SUBDIVISION AS RECORDED IN LIBER 28 OF PLATS, PAGES 43-45, LIVINGSTON COUNTY RECORDS.

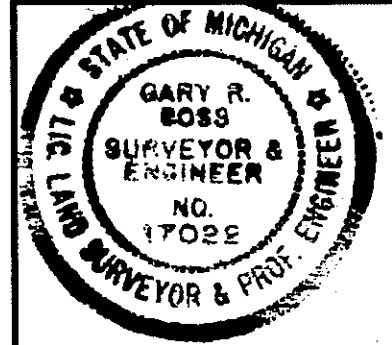
NO DIRECT ACCESS SHALL BE PERMITTED TO BRIGHTON ROAD FROM LOTS 1 & 14 OR TO CLIFFORD ROAD FROM LOTS 1-13.

PREPARED AND DRAFTED BY:

BOSS ENGINEERING COMPANY
3121 EAST GRAND RIVER
HOWELL, MICHIGAN 48843

Gary R. Boss
GARY R. BOSS

SURVEYOR'S SEAL

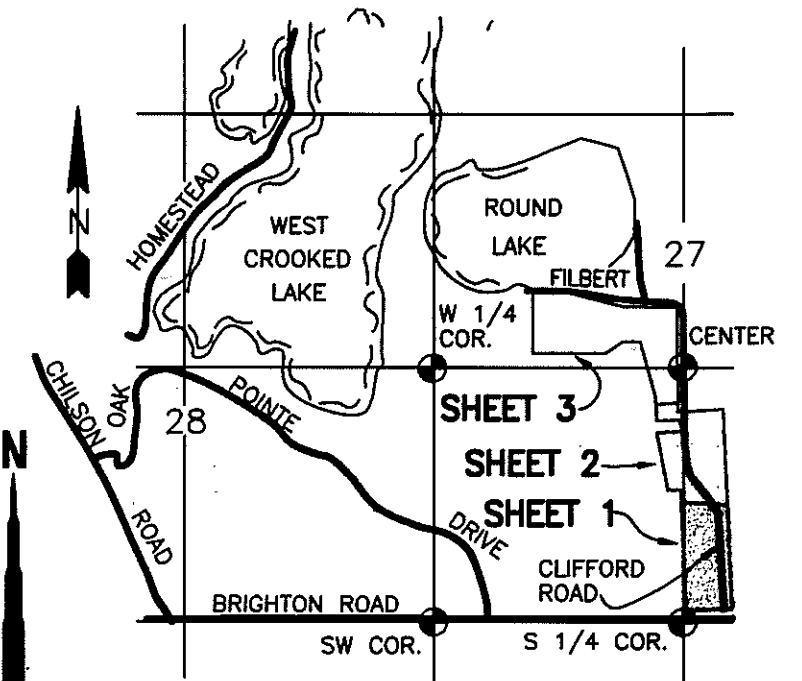


LIBER PAGE

OAK POINTE HILLS

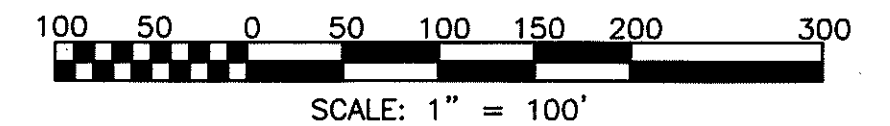
A PART OF THE NW 1/4, SE 1/4 & SW 1/4 OF SECTION 27, T2N-R5E, GENOA TOWNSHIP, LIVINGSTON COUNTY MICHIGAN

SHEET 2 OF 5 SHEETS



LOCATION MAP

SCALE: 1" = 2000'
T2N-R5E



LEGEND:

ALL DIMENSIONS ARE SHOWN IN FEET.

ALL CURVILINEAR DIMENSIONS ARE SHOWN ALONG THE ARC.

THE SYMBOL "O" INDICATES A CONCRETE MONUMENT, WHICH IS 4" IN DIAMETER X 36" LONG, ENCASED A 1/2" STEEL ROD.

THE SYMBOL (R) DENOTES A RADIAL LOT LINE.

THE SYMBOL (NR) DENOTES A NON-RADIAL LOT LINE.

ALL LOT MARKERS ARE 1/2 INCH STEEL RODS AND ARE 18 INCHES IN LENGTH. (NOT CAPPED)

BEARINGS WERE ESTABLISHED FROM THE RECORDED PLAT OF "OAK POINTE HILLS NO. 2" A SUBDIVISION AS RECORDED IN LIBER 28 OF PLATS, PAGES 43-45, LIVINGSTON COUNTY RECORDS.

ALL DIMENSIONS SHOWN IN *ITALICS* ARE FROM THE WETLANDS TO THE TRAVERSE OR LOT LINE.

NO DIRECT ACCESS SHALL BE PERMITTED TO CLIFFORD ROAD FROM LOTS 28, 39-41 AND 47.

PREPARED AND DRAFTED BY:

BOSS ENGINEERING COMPANY
3121 EAST GRAND RIVER
HOWELL, MICHIGAN 48843

Gary R. Boss
GARY R. BOSS

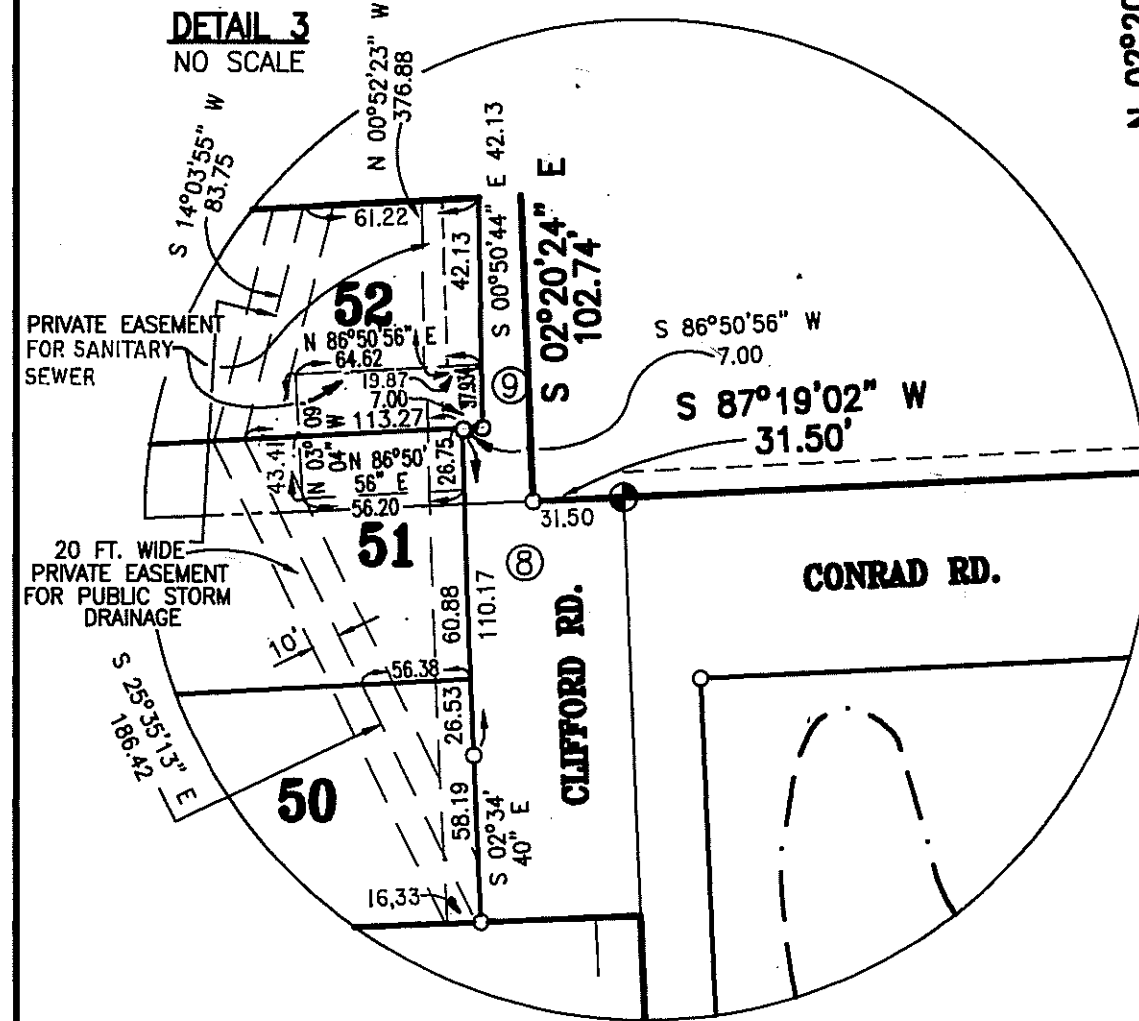
TIMBERIDGE
LIVINGSTON COUNTY
SUBDIVISION PLAN NO. 100
LIBER 2097,
PAGES 1022-1025, L.C.R.

SURVEYOR'S SEAL

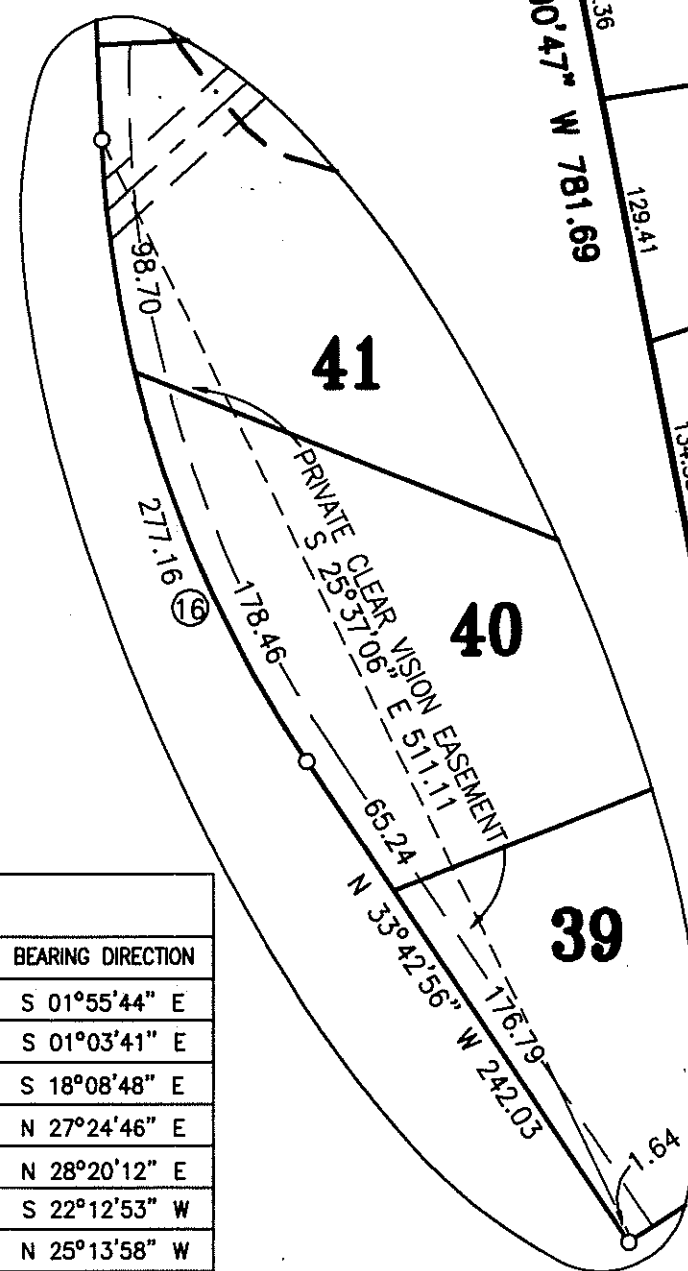


LIBER _____ PAGE _____

DETAIL 3
NO SCALE



DETAIL 4
NO SCALE



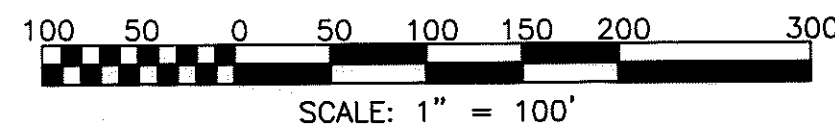
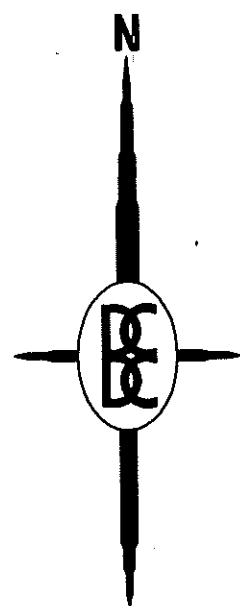
NOTE:

ALL DRAIN EASEMENTS AND DETENTION AREAS ARE UNDER THE JURISDICTION OF THE LIVINGSTON COUNTY DRAIN COMMISSIONER. USE OF THE WORD "PRIVATE" DOES NOT LIMIT IN ANY WAY THE SCOPE OF THE EASEMENT GRANTED TO THE LIVINGSTON COUNTY DRAIN COMMISSIONER.

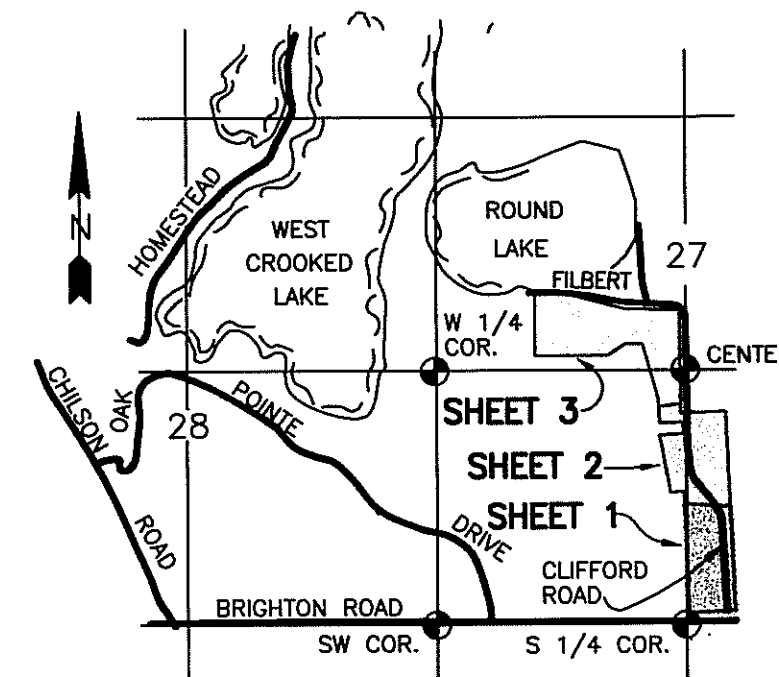
CURVE DATA

CURVE	RADIUS	CENTRAL ANGLE	ARC LENGTH	CHORD LENGTH	BEARING DIRECTION
8	5040.00	01°17'52"	114.17	114.17	S 01°55'44" E
9	5033.00	00°25'54"	37.93	37.93	S 01°03'41" E
10	590.00	31°08'16"	320.64	316.71	S 18°08'48" E
11	208.00	57°44'37"	209.63	200.87	N 27°24'46" E
12	142.00	55°53'45"	138.53	133.10	N 28°20'12" E
13	50.00	47°20'53"	41.32	40.15	S 22°12'53" W
14	50.00	51°14'35"	44.72	43.24	N 25°13'58" W
15	75.00	276°44'35"	362.26	99.64	S 87°31'02" W
16	510.00	31°08'16"	277.16	273.76	S 18°08'48" E

SECTION 27, T2N-R5E, LSC# 1294

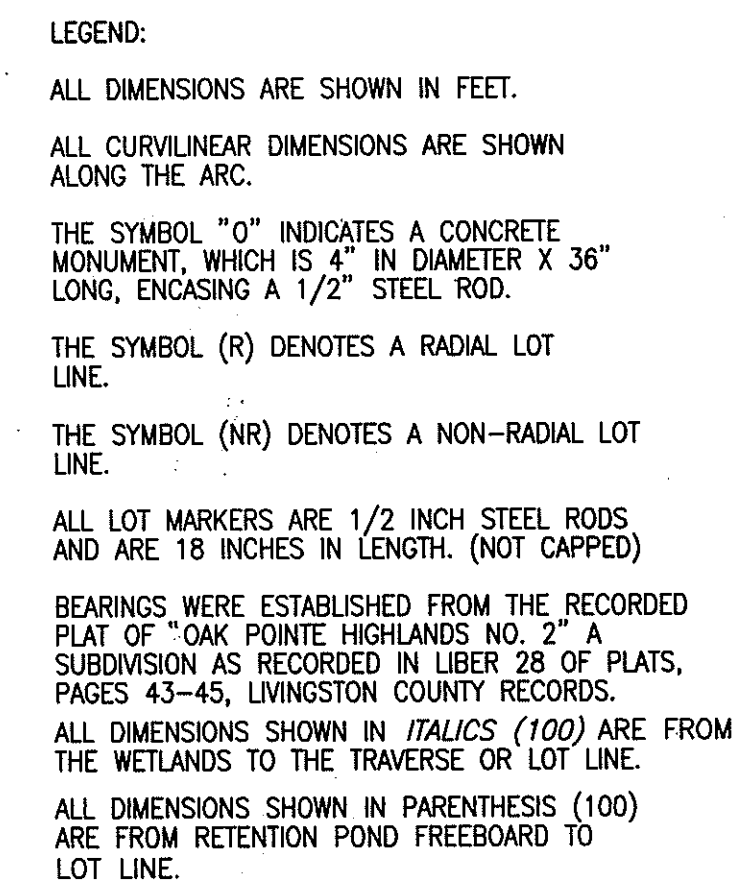


ROUND LAKE SUBDIVISION
LIBER 1 OF PLATS PAGE 72 LOR



LOCATION MAP
SCALE: 1" = 2000'
T2N-R5E

CURVE DATA					
CURVE	RADIUS	CENTRAL ANGLE	ARC LENGTH	CHORD LENGTH	BEARING DIRECTION
17	203.00	07°46'00"	27.52	27.50	N 25°40'44" E
18	187.00	88°43'26"	289.57	261.50	S 66°09'27" W
19	205.00	87°28'06"	312.96	283.44	N 44°34'47" W

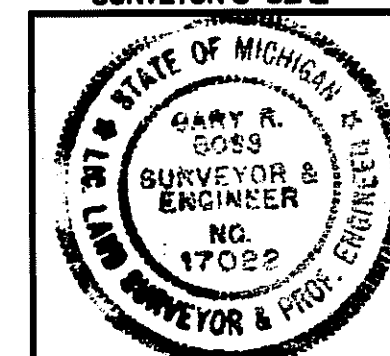
UNPLATTED
UNPLATTED

PREPARED AND DRAFTED BY:

BOSS ENGINEERING COMPANY
3121 EAST GRAND RIVER
HOWELL, MICHIGAN 48843

Gary R. Boss
GARY R. BOSS

SURVEYOR'S SEAL



NOTE:

ALL DRAIN EASEMENTS AND DETENTION AREAS ARE UNDER THE JURISDICTION OF THE LIVINGSTON COUNTY DRAIN COMMISSIONER. USE OF THE WORD "PRIVATE" DOES NOT LIMIT IN ANY WAY THE SCOPE OF THE EASEMENT GRANTED TO THE LIVINGSTON COUNTY DRAIN COMMISSIONER.

LIBER PAGE