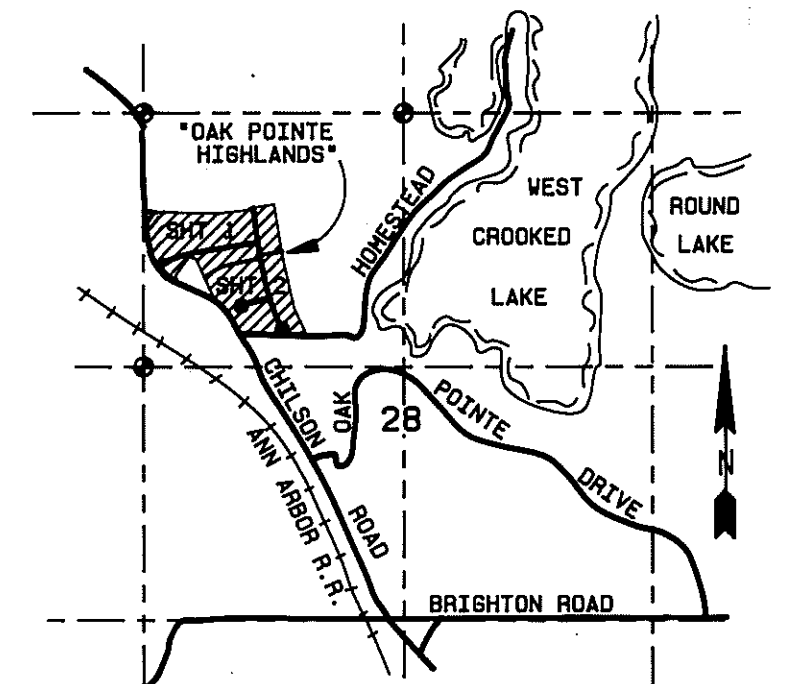
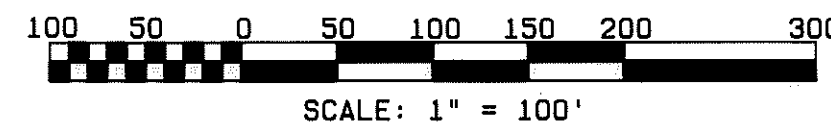


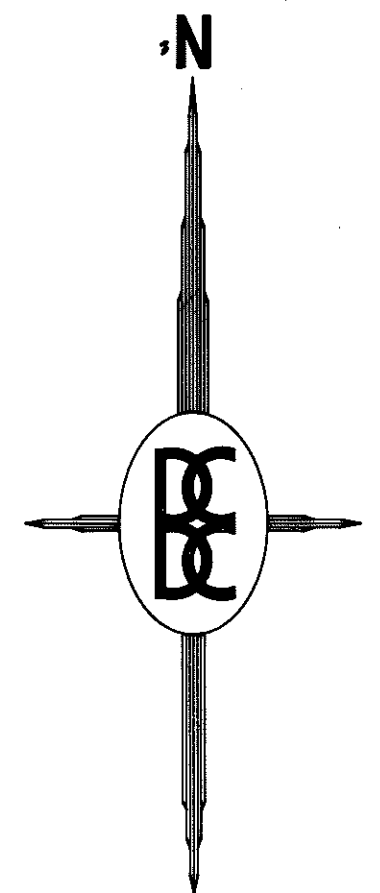
OAK POINTE HIGHLANDS

A SUBDIVISION OF PART OF THE NW 1/4 OF SECTION 28, T2N-R5E, GENOA TOWNSHIP, LIVINGSTON COUNTY, MICHIGAN

SHEET 1 OF 4 SHEETS



LOCATION MAP
SCALE: 1" = 2000'



UNPLATTED

LEGEND:

All dimensions are shown in feet.

All curvilinear dimensions are shown along the arc.

The symbol "o" indicates a concrete monument, which is 4" in diameter x 36" long, encasing a 1/2" iron rod.

The symbol (R) denotes a radial lot line.

All lot markers are 1/2 inch iron rods and are 18 inches in length. (not capped)

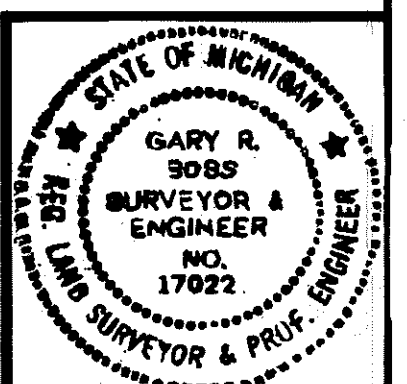
Bearings were established from the recorded Plat of "Oak Pointe North No. 3", Liber 26 of Plats, page 1-3, Livingston County Records.

PREPARED AND DRAFTED BY:

Boss Engineering Company
3121 East Grand River
Howell, Michigan 48843

Gary R. Boss
Gary R. Boss

SURVEYOR'S SEAL



LIBER _____ PAGE _____

NW CORNER
SECTION 28
T2N-R5E

N 1/4 COR.
SECTION 28
T2N-R5E

This plat is subject to restrictions required by Act 288 of 1967, as amended on certain lots with respect to the requirements of the Michigan Department of Natural Resources and/or the Michigan Department of Public Health, which are recorded in Liber 1334, pages 414-463.

POINT OF BEGINNING

UNPLATTED

BUILDING IN THIS AREA
TO BE BY MICHIGAN
DEPARTMENT OF NATURAL
RESOURCES PERMIT ONLY.

EASEMENT FOR
OF PRESERVATION
WETLANDS

PINEHURST DRIVE
(66 FT. WIDE)

UNPLATTED

MATCH LINE SEE SHEET 2

CURVE DATA

NO.	RADIUS	DELTA	ARC	CHORD	BEARING
1	1024.72	37°13'31"	665.77	654.12	N 62°00'15" E
2	958.72	37°24'48"	626.03	614.97	N 61°54'37" E
3	673.94	10°03'00"	118.21	118.06	N 35°57'38" W
4	703.94	02°16'44"	28.00	28.00	N 03°26'55" W

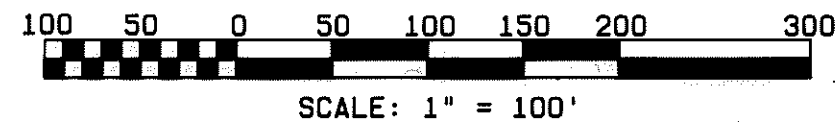
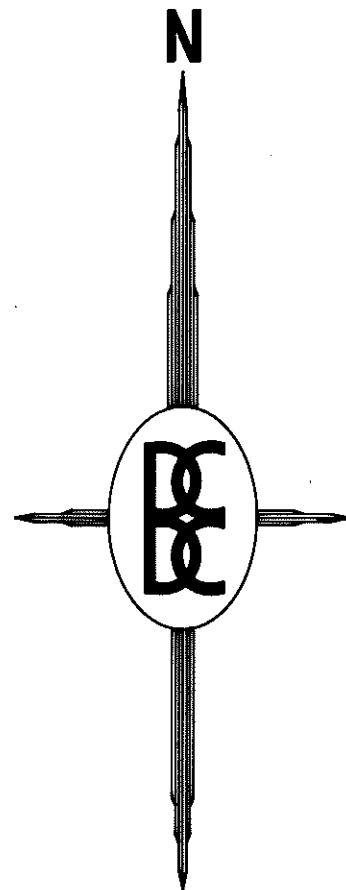
Δ = 52°30'23"
RAD. = 703.94
ARC = 645.10
CHORD = N 26°33'44" W
622.76

W 1/4 CORNER
SECTION 28
T2N-R5E

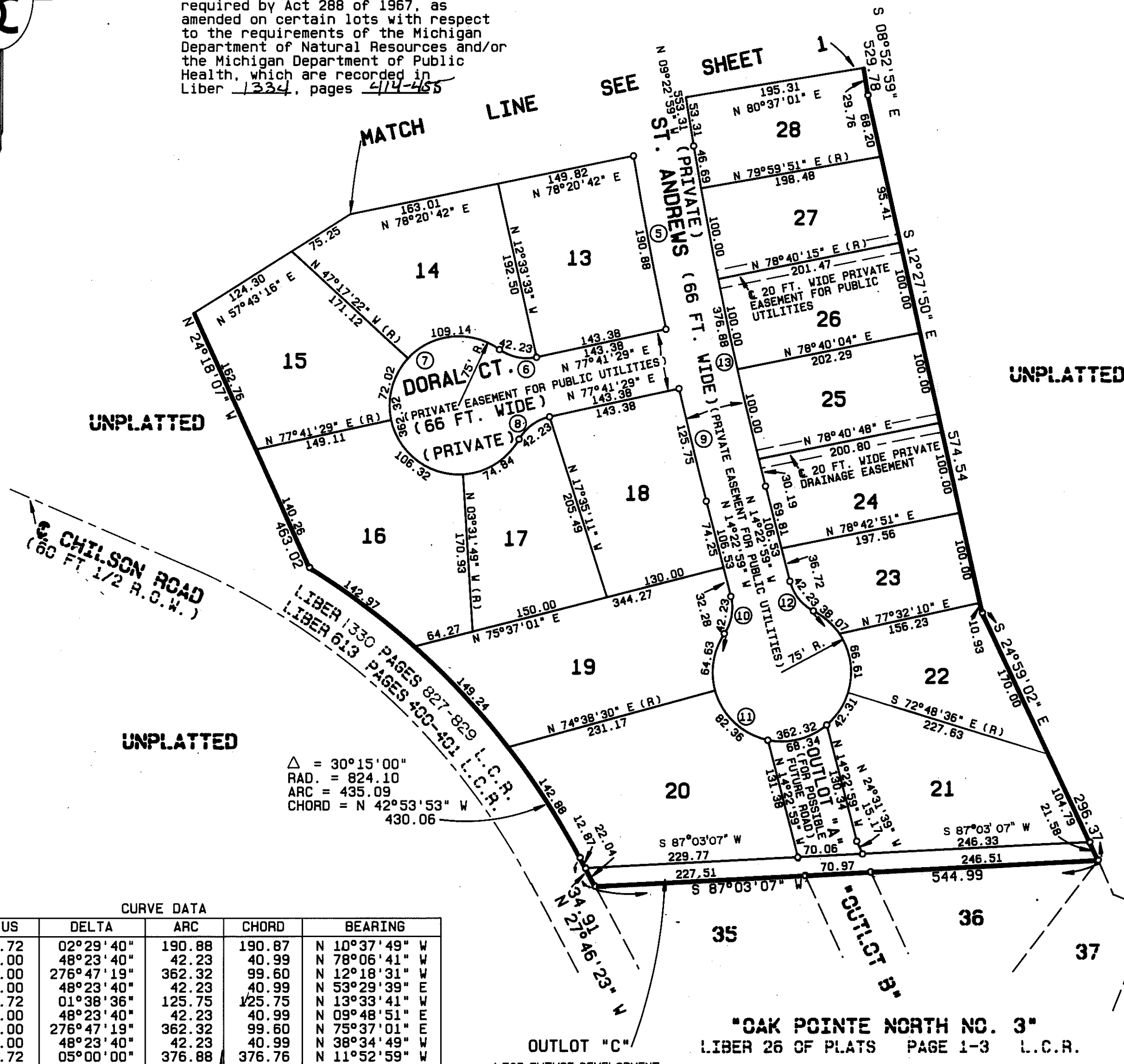
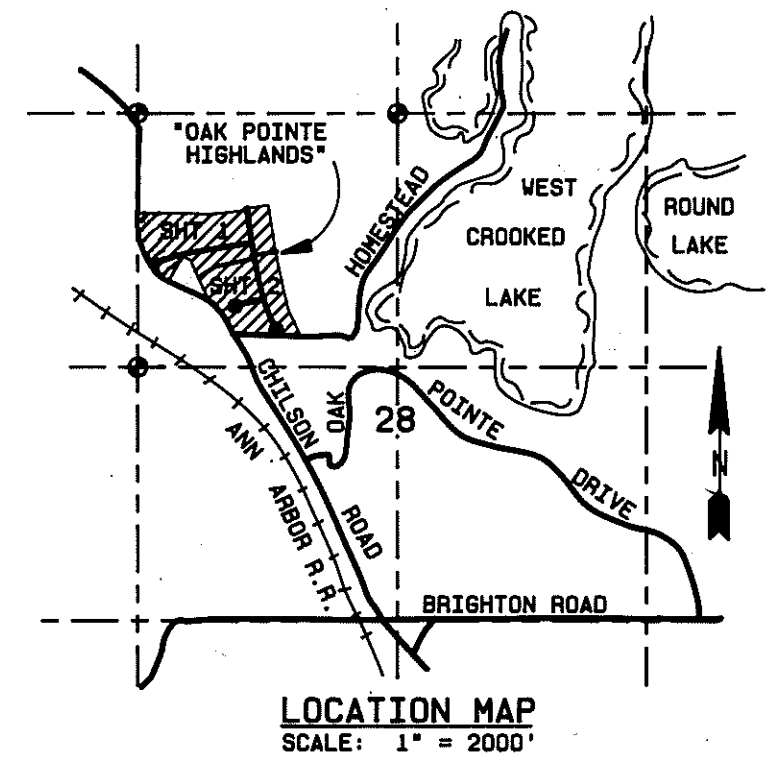
OAK POINTE HIGHLANDS

SHEET 2 OF 4 SHEETS

A SUBDIVISION OF PART OF THE NW 1/4 OF SECTION 28,
T2N-R5E, GENOA TOWNSHIP, LIVINGSTON COUNTY, MICHIGAN



This plat is subject to restrictions required by Act 288 of 1967, as amended on certain lots with respect to the requirements of the Michigan Department of Natural Resources and/or the Michigan Department of Public Health, which are recorded in Liber 1334, pages 414-465



Δ = 30°15'00"
RAD. = 824.10
ARC = 435.09
CHORD = N 42°53'53" W
430.06

CURVE DATA

NO.	RADIUS	DELTA	ARC	CHORD	BEARING
5	4384.72	02°29'40"	190.88	190.87	N 10°37'49" W
6	50.00	48°23'40"	42.23	40.99	N 78°06'41" W
7	75.00	276°47'19"	362.32	99.60	N 12°18'31" E
8	50.00	48°23'40"	42.23	40.99	N 53°29'39" E
9	4384.72	01°38'36"	125.75	125.75	N 13°33'41" E
10	50.00	48°23'40"	42.23	40.99	N 09°48'51" E
11	75.00	276°47'19"	362.32	99.60	N 75°37'01" E
12	50.00	48°23'40"	42.23	40.99	N 38°34'49" W
13	4318.72	05°00'00"	376.88	376.76	N 11°52'59" W

OUTLOT "C"
(FOR FUTURE DEVELOPMENT
AND SUBJECT TO INGRESS AND
EGRESS EASEMENTS OF RECORD)

"OAK POINTE NORTH NO. 3"
LIBER 26 OF PLATS PAGE 1-3 L.C.R.

LEGEND:

All dimensions are shown in feet.

All curvilinear dimensions are shown along the arc.

The symbol "o" indicates a concrete monument, which is 4" in diameter x 36" long, encasing a 1/2" iron rod.

The symbol (R) denotes a radial lot line.

All lot markers are 1/2 inch iron rods and are 18 inches in length. (not capped)

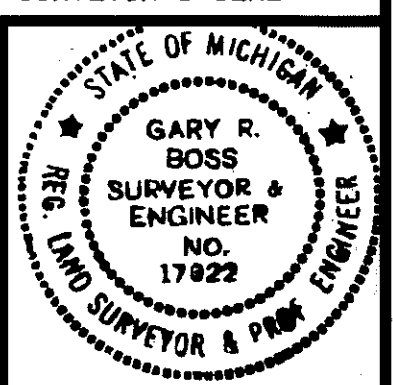
Bearings were established from the recorded Plat of "Oak Pointe North No. 3", Liber 26 of Plats, page 1-3, Livingston County Records.

PREPARED AND DRAFTED BY:

Boss Engineering Company
3121 East Grand River
Howell, Michigan 48843

Gary R. Boss
Gary R. Boss

SURVEYOR'S SEAL



LIBER _____ PAGE _____