

LIBER _____ PAGE _____

CURVE DATA					
CURVE			CHORD		
CURVE	RADIUS	LENGTH	DELTA	BEARING	CHORD
1	2599.91'	561.65'	12°22'39"	S 06°22'25" W	560.56'
2	400.00'	86.39'	12°22'29"	S 06°22'31" W	86.22'
3	25.00'	39.75'	91°06'28"	N 31°53'01" W	35.70'
4	25.00'	39.27'	90°00'00"	S 57°33'45" W	35.36'
5	533.00'	151.63'	16°18'00"	S 04°24'46" W	151.12'
6	467.00'	132.86'	16°18'00"	S 04°24'46" W	152.41'
15	263.00'	457.02'	99°33'50"	N 54°14'49" W	401.65'
16	197.00'	342.33'	99°33'50"	N 54°14'49" W	300.86'
17	367.00'	170.32'	26°35'25"	S 89°16'01" W	168.80'
18	433.00'	200.95'	26°35'26"	S 89°16'02" W	199.15'
19	1364.04'	391.66'	16°27'05"	S 80°21'44" W	390.32'



VICINITY MAP
NOT TO SCALE
18

SECTION 19

24 **20**

CROOKED LAKE RD
PARDEE RD
COON LAKE RD
BEATTIE RD
WESTPHAL RD

SITE

30

[illegible]

2025

UNPLANTED

SOUTH 1/4 CORNER
OF SECTION 19
T. 2 N., R. 5 E.
GENOA TOWNSHIP
LIVINGSTON COUNTY
MICHIGAN
L.C.R.C. # 927

1) ALL DIMENSIONS SHOWN ARE IN FEET.	4) LOT CORNERS ARE MARKED WITH 3/4 INCH x 18 INCH IRON PIPES WITH YELLOW PLASTIC CAPS MARKED "JKS 35999".	7) BEARINGS WERE ESTABLISHED FROM "ROUNSFIFER ACRES" LIBER 12 OF PLATS, PAGE 20 LIVINGSTON COUNTY RECORDS.
2) ALL CURVILINEAR DIMENSIONS SHOWN ARE ARC LENGTHS.	5) THE SYMBOL (R) INDICATES A RADIAL LINE.	
3) THE SYMBOL "O" INDICATES A CONCRETE MONUMENT 4 INCHES IN DIAMETER, 36 INCHES IN LENGTH, ENCASED A 1/2 INCH x 36 INCH IRON ROD.	6) THE SYMBOL (NR) INDICATES A NON-RADIAL LINE.	

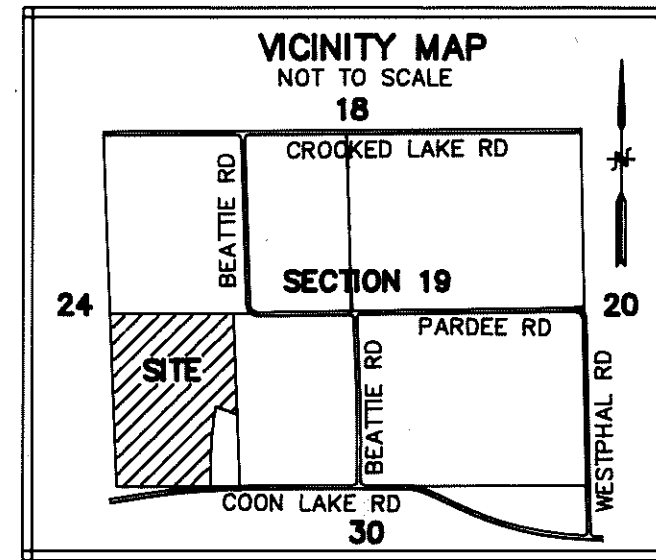
DESINE ENGINEERS
7011 W.GRAND RIVER AVE.
BRIGHTON, MICHIGAN 48116
(313) 227-9533

Jack K. Smith
 JACK K. SMITH, P.S. # 35999

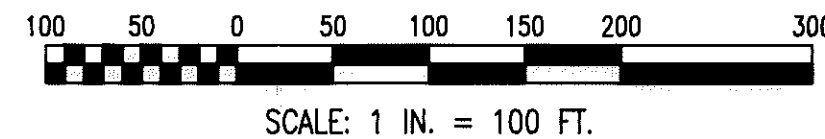
NOVEL ESTATES

A SUBDIVISION OF PART OF THE WEST 1/2 OF THE SOUTHWEST FRACTIONAL 1/4 OF
SECTION 19, TOWN 2 NORTH, RANGE 5 EAST, GENOA TOWNSHIP,
LIVINGSTON COUNTY, MICHIGAN

SHEET 2 OF 4
LIBER _____ PAGE _____



EAST 1/4 CORNER
OF SECTION 24
T. 2 N., R. 4 E.
MARION TOWNSHIP
LIVINGSTON COUNTY
MICHIGAN
L.C.R.C. # 1679



CURVE DATA

CURVE	CURVE			CHORD	
	RADIUS	LENGTH	DELTA	BEARING	CHORD
6	467.00'	132.86'	16°18'02"	S 04°24'44" W	132.41'
7	766.00'	431.35'	32°15'49"	S 19°52'09" E	425.66'
8	700.00'	394.18'	32°15'51"	S 19°52'09" E	388.99'
13	766.00'	363.85'	27°12'56"	N 09°08'35" E	360.44'
14	700.00'	332.50'	27°12'56"	N 09°08'35" E	329.38'

UNPLATTED

THIS PLAT IS SUBJECT TO RESTRICTIONS AS
REQUIRED BY ACT 289 OF 1967, AS AMENDED
ON CERTAIN LOTS WITH RESPECT TO THE RE-
QUIREMENTS OF THE MICHIGAN DEPARTMENT OF
NATURAL RESOURCES AND/OR THE MICHIGAN
DEPARTMENT OF PUBLIC HEALTH, WHICH ARE
RECORDED IN LIBER 1867, PAGE 380-392
OF RECORDS OF THIS COUNTY.

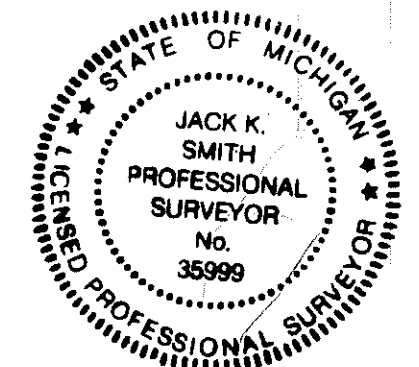
SOUTHWEST CORNER
OF SECTION 19
T. 2 N., R. 5 E.
GENOA TOWNSHIP
LIVINGSTON COUNTY
MICHIGAN
L.C.R.C. # 1031

LEGEND:

- ALL DIMENSIONS SHOWN ARE IN FEET.
- ALL CURVILINEAR DIMENSIONS SHOWN ARE ARC LENGTHS.
- THE SYMBOL "O" INDICATES A CONCRETE MONUMENT 4 INCHES IN DIAMETER, 36 INCHES IN LENGTH, ENCASED IN A 1/2 INCH x 36 INCH IRON ROD.
- LOT CORNERS ARE MARKED WITH 3/4 INCH x 18 INCH IRON PIPES WITH YELLOW PLASTIC CAPS MARKED "JKS 35999".
- THE SYMBOL (R) INDICATES A RADIAL LINE.
- THE SYMBOL (NR) INDICATES A NON-RADIAL LINE.
- BEARINGS WERE ESTABLISHED FROM "ROUNDSIFER ACRES" LIBER 12 OF PLATS, PAGE 20 LIVINGSTON COUNTY RECORDS.

DESINE INC.
ENGINEERS

7011 W. GRAND RIVER AVE.
BRIGHTON, MICHIGAN 48116
(313) 227-9533



Jack K. Smith
JACK K. SMITH, P.S. # 35999

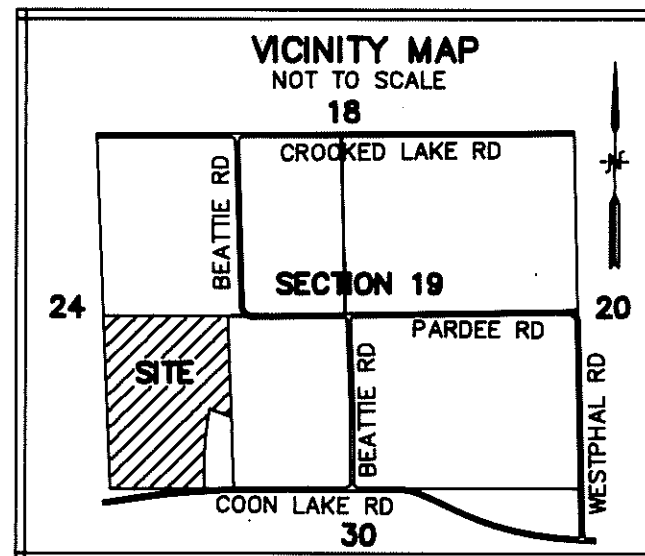
UNPLATTED

NOVEL ESTATES

SHEET 3 OF 4

LIBER _____ PAGE _____

A SUBDIVISION OF PART OF THE WEST 1/2 OF THE SOUTHWEST FRACTIONAL 1/4 OF
SECTION 19, TOWN 2 NORTH, RANGE 5 EAST, GENOA TOWNSHIP,
LIVINGSTON COUNTY, MICHIGAN



NORTHEAST CORNER
OF SECTION 24
T. 2 N., R. 4 E.
MARION TOWNSHIP
LIVINGSTON COUNTY
MICHIGAN
L.C.R.C. # 1531



SCALE: 1 IN. = 100 FT.

CENTER OF SECTION 19
(AS MONUMENTED)
T. 2 N., R. 5 E.
GENOA TOWNSHIP
LIVINGSTON COUNTY
MICHIGAN
L.C.R.C. # 1681

UNPLATTED

EAST 1/4 CORNER
OF SECTION 24
T. 2 N., R. 4 E.
MARION TOWNSHIP
LIVINGSTON COUNTY
MICHIGAN
L.C.R.C. # 1679

WEST 1/4 CORNER
OF SECTION 19
T. 2 N., R. 5 E.
GENOA TOWNSHIP
LIVINGSTON COUNTY
MICHIGAN
L.C.R.C. # 1682

**MAHTOB PARK
(PRIVATE)**

A PRIVATE EASEMENT FOR
STORM WATER DETENTION
AND PUBLIC UTILITIES.

**MAHTOB PARK
(PRIVATE)**

A PRIVATE EASEMENT FOR
STORM WATER DETENTION
AND PUBLIC UTILITIES.

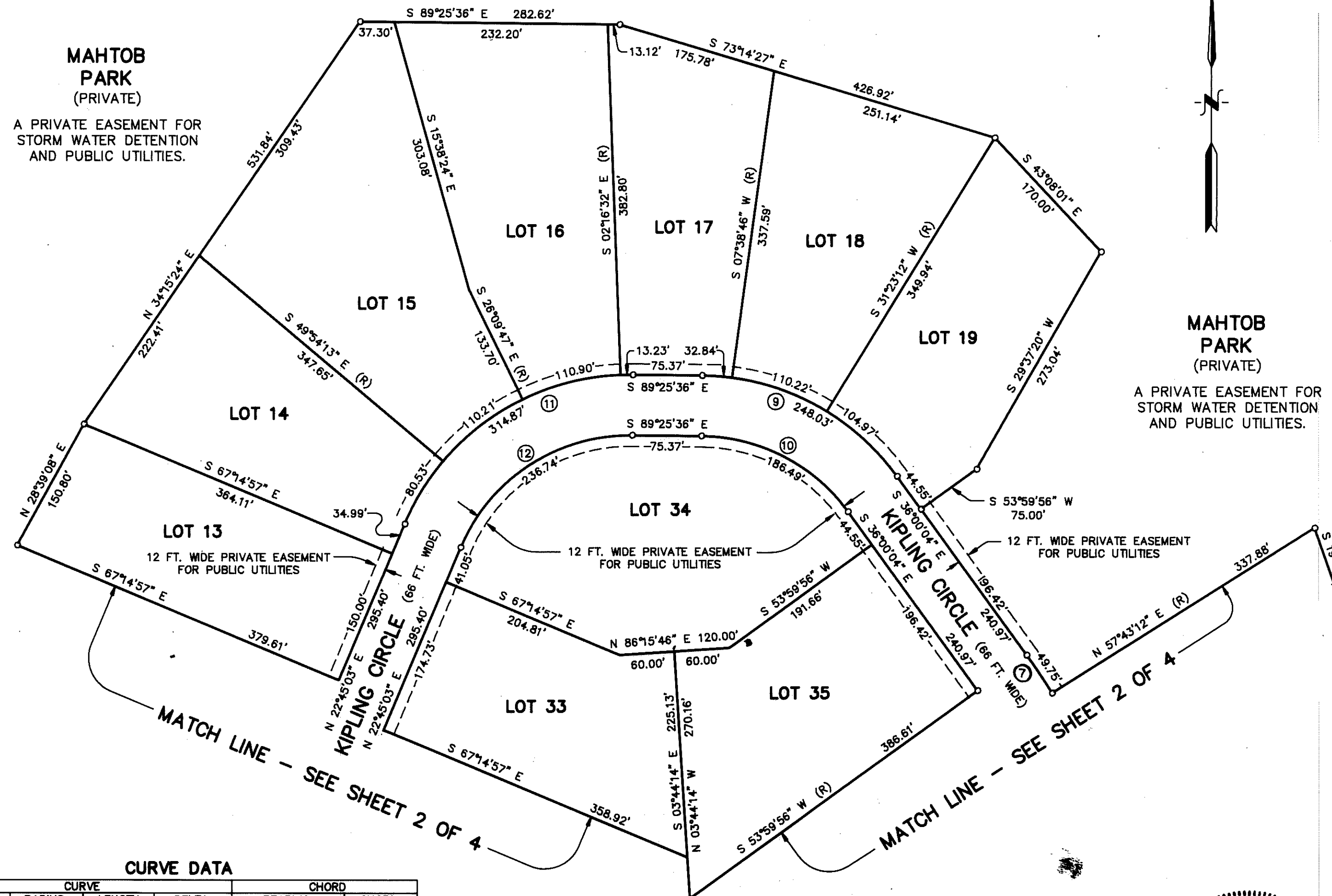
ROUNSFER ACRES
LIBER 12 OF PLATS, PAGE 20
LIVINGSTON COUNTY RECORDS

UNPLATTED

THIS PLAT IS SUBJECT TO RESTRICTIONS AS
REQUIRED BY ACT 289 OF 1967, AS AMENDED,
ON CERTAIN LOTS WITH RESPECT TO THE RE-
QUIREMENTS OF THE MICHIGAN DEPARTMENT OF
NATURAL RESOURCES AND/OR THE MICHIGAN
DEPARTMENT OF PUBLIC HEALTH, WHICH ARE
RECORDED IN LIBER 1767, PAGE 280-352
OF RECORDS OF THIS COUNTY.

SOUTHWEST CORNER
OF SECTION 19
T. 2 N., R. 5 E.
GENOA TOWNSHIP
LIVINGSTON COUNTY
MICHIGAN
L.C.R.C. # 1031

UNPLATTED



CURVE DATA

CURVE	RADIUS	LENGTH	DELTA	BEARING	CHORD
9	266.00'	248.03'	53°25'32"	S 62°42'50" E	239.14'
10	200.00'	186.49'	53°25'32"	S 62°42'50" E	179.81'
11	266.00'	314.87'	67°49'21"	N 56°39'43" E	296.81'
12	200.00'	236.74'	67°49'21"	N 56°39'43" E	223.16'
7	766.00'	431.35'	32°15'49"	S 19°52'09" E	425.66'

LEGEND:

- ALL DIMENSIONS SHOWN ARE IN FEET.
- ALL CURVILINEAR DIMENSIONS SHOWN ARE ARC LENGTHS.
- THE SYMBOL "O" INDICATES A CONCRETE MONUMENT 4 INCHES IN DIAMETER, 36 INCHES IN LENGTH, ENCASED A 1/2 INCH x 36 INCH IRON ROD.
- LOT CORNERS ARE MARKED WITH 3/4 INCH x 18 INCH IRON PIPES WITH YELLOW PLASTIC CAPS MARKED "JKS 35999".
- THE SYMBOL (R) INDICATES A RADIAL LINE.
- THE SYMBOL (NR) INDICATES A NON-RADIAL LINE.
- BEARINGS WERE ESTABLISHED FROM "ROUNSFER ACRES" LIBER 12 OF PLATS, PAGE 20 LIVINGSTON COUNTY RECORDS.

DESINE ENGINEERS
7011 W. GRAND RIVER AVE.
BRIGHTON, MICHIGAN 48116
(313) 227-9533

STATE OF MICHIGAN
JACK K. SMITH
PROFESSIONAL SURVEYOR
No. 35999
JACK K. SMITH, P.S. # 35999