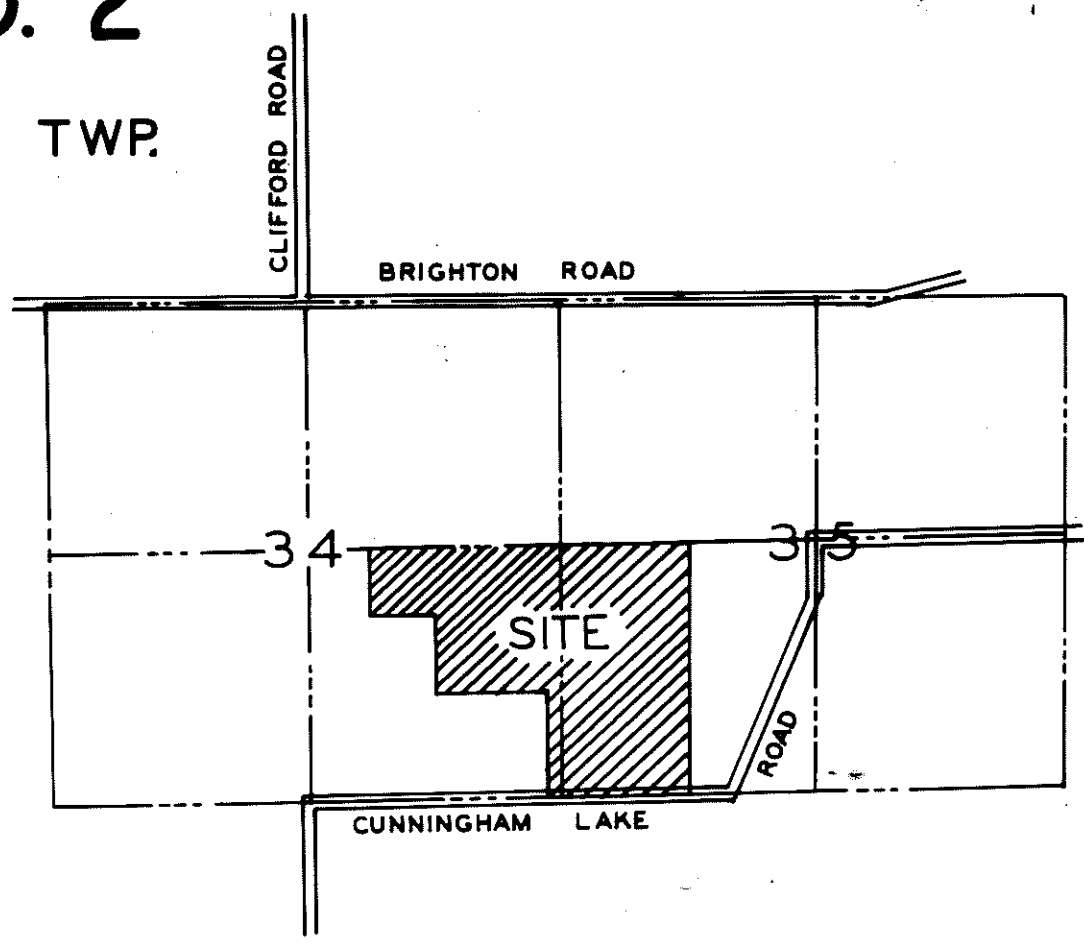
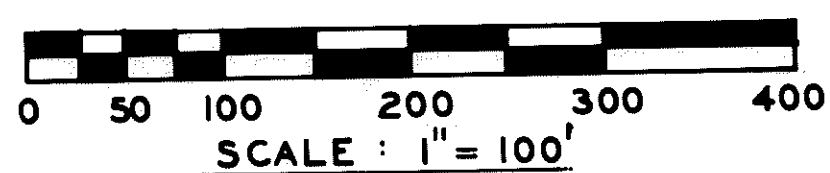
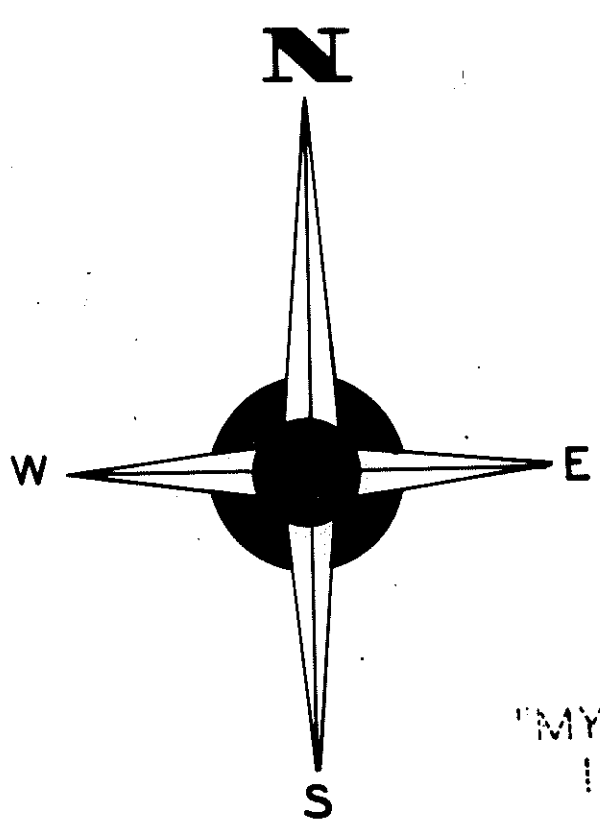


This Plat is subject to restrictions as required by Act 288 of 1967, as amended on certain lots with respect to the requirements of the Michigan Department of Natural Resources and/or the Michigan Department of Public Health, which are recorded in Liber 163, Page 213-220 of records of this county.

MYSTIC LAKE HILLS SUBDIVISION NO. 2"

PART OF S.E. 1/4 OF SECTION 34 & PART OF S.W. 1/4 OF SECTION 35, T.2N., R.5E., GENOA TWP.

LIVINGSTON COUNTY, MICHIGAN

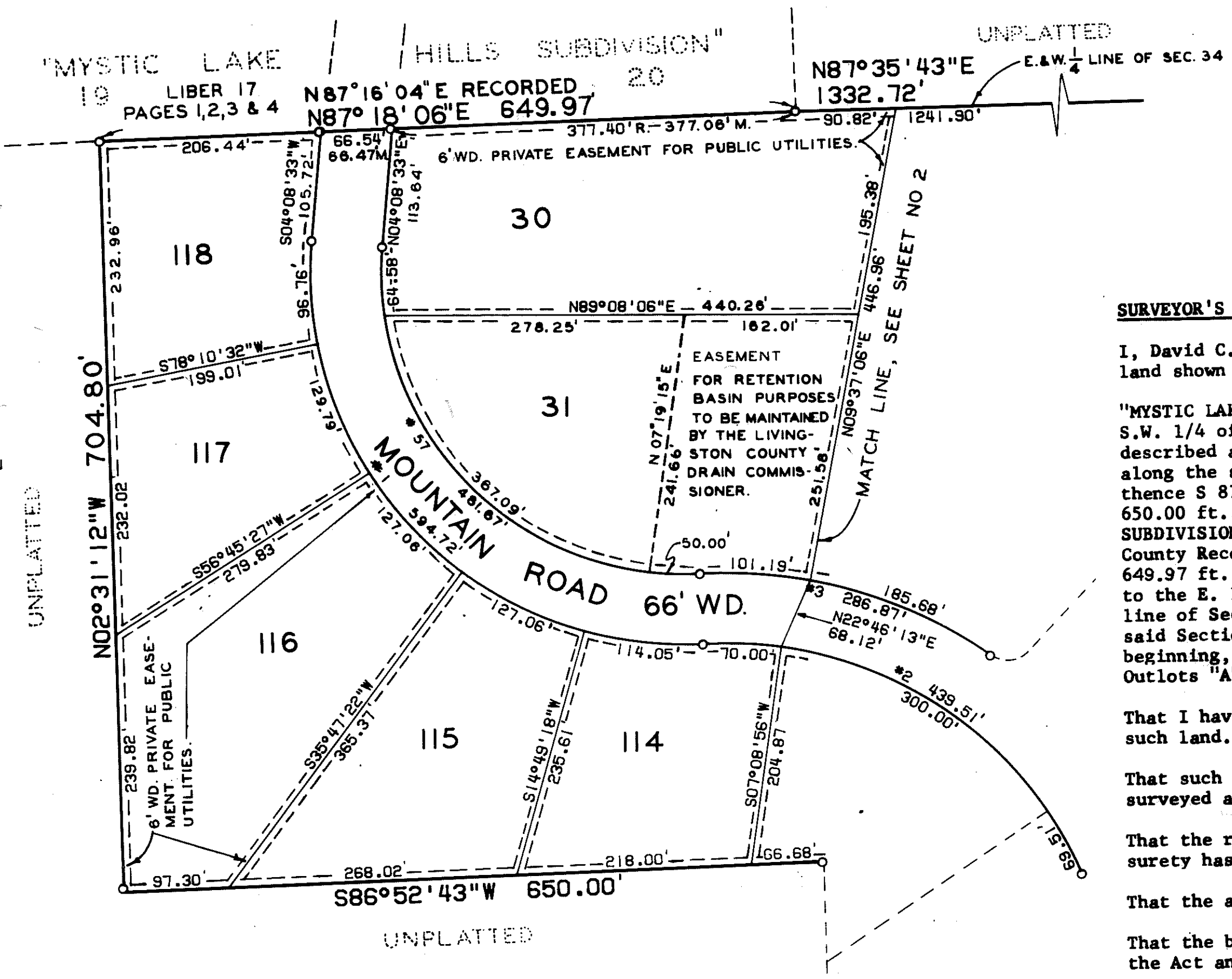


LOCATION MAP
SCALE: 1" = 2000'

PLAT LEGEND

1. ALL DIMENSIONS ARE IN FEET.
2. ALL CURVE DIMENSIONS ARE MEASURED ALONG THE ARC.
3. ALL BEARINGS ARE RELATED TO THE ADJACENT PLAT OF "PRAIRIE VIEW HILLS" AS RECORDED IN LIBER 15 OF PLATS, PAGES 46, 47, 48 AND 49.
4. CONCRETE MONUMENTS HAVE BEEN SET AT POINTS MARKED "O".
5. LOT CORNERS HAVE BEEN MARKED WITH 1/2" x 18" STEEL ROD.

UNPLATTED



CURVE DATA

NUMBER	RADIUS	ARC	DELTA	CHORD	CHORD BRNG
1	347.20	594.72	098°08'33"	524.64	S44°55'43.5"E
2	359.74	439.51	070°00'00"	412.68	S59°00'00.0"E
3	425.74	286.87	038°36'25"	281.48	N74°41'47.5"W
57	281.20	481.67	098°08'33"	424.91	N44°55'43.5"W

SURVEYOR'S CERTIFICATE:

I, David C. Finney, Surveyor, certify: That I have surveyed, divided and mapped the land shown on this plat, described as follows:

"MYSTIC LAKE HILLS SUBDIVISION NO. 2", part of the S.E. 1/4 of Section 34 and part of S.W. 1/4 of Section 35, T.2N., R.5E., Genoa Township, Livingston County, Michigan, described as beginning at the S.E. corner of said Section 34; thence S 87°34'57" W along the south line of said Section 34, 171.64 ft.; thence N 02°31'12" W 1150.00 ft.; thence S 87°34'57" W 1150.00 ft.; thence N 02°31'12" W 802.86 ft.; thence S 86°52'43" 650.00 ft.; thence N 02°31'12" W 704.80 ft. to the southerly line of "MYSTIC LAKE HILLS SUBDIVISION" as recorded in Liber 17 of Plats, pages 1 through 4 inclusive, Livingston County Records; thence N 87°18'06" E along the southerly line of said subdivision, 649.97 ft.; thence N 87°35'43" E along the E. & W. 1/4 line of Section 34, 1332.72 ft. to the E. 1/4 corner of said Section 34; thence N 87°20'17" E along the E. & W. 1/4 line of Sec. 35, 1319.26 ft.; thence S 02°36'12" E 2657.33 ft. to the south line of said Section 35; thence S 87°32'42" W along said line, 1334.20 ft. to the point of beginning, containing 141.80 acres and 89 lots numbered 30 through 118 inclusive, and Outlots "A", "B", AND "C".

That I have made such survey, land-division and Plat by the direction of the owners of such land.

That such Plat is a correct representation of all the exterior boundaries of the land surveyed and the subdivision of it.

That the required monuments and lot markers have been located in the ground or that surety has been deposited with the municipality, as required by Section 125 of the Act.

That the accuracy of survey is within the limits required by Section 126 of the Act.

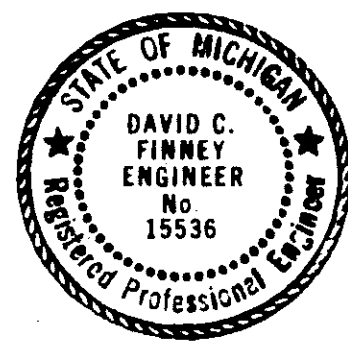
That the bearings shown on the Plat are expressed as required by Section 126(3) of the Act and as explained in the legend.

DATE: 5-20-76

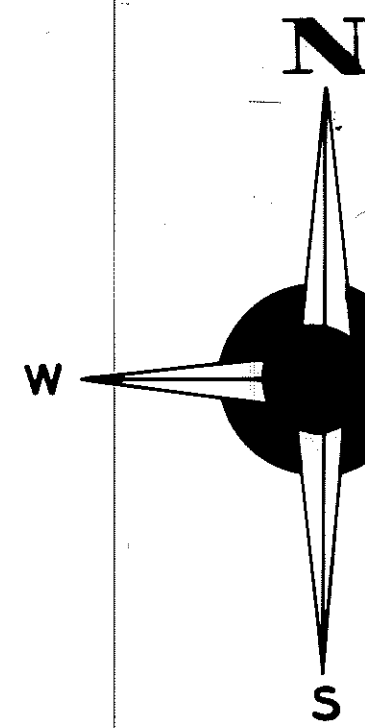
FINNEY, CARNAHAN & ASSOCIATES, INC.

Certified true copy of Recorded plat

Allison Green
ALLISON GREEN
STATE TREASURER
By *Richard E. Lomax*
Richard E. Lomax - Plat Examiner
Date August 26, 1976

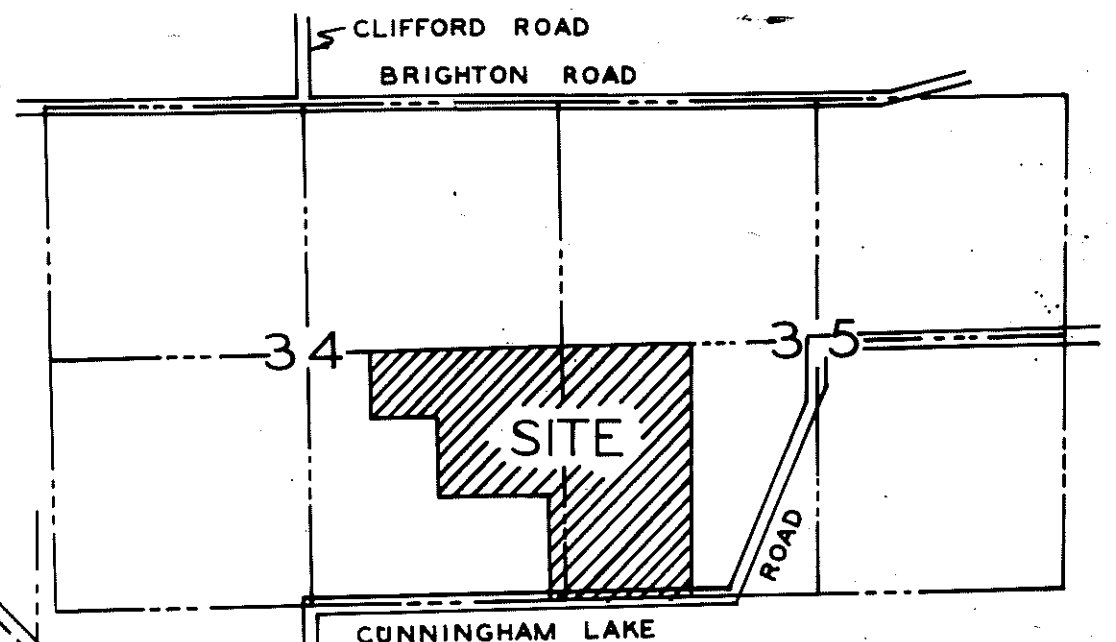
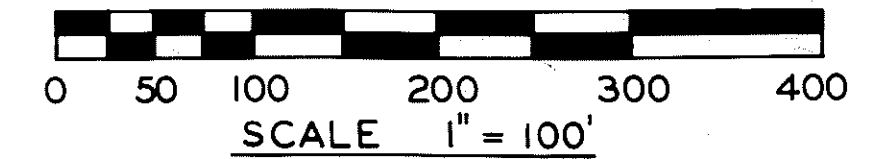


David C. Finney
David C. Finney, President
P.E. No. 15536
1044 E. West Maple Road
Walled Lake, Michigan 48088



"MYSTIC LAKE HILLS SUBDIVISION NO.2"

PART OF SE 1/4 OF SEC 34 & PART
OF SW 1/4 OF SEC. 35, T.2N., R.5E.
GENOA TOWNSHIP
LIVINGSTON COUNTY, MICHIGAN



LOCATION MAP

SCALE 1" = 2000'

PLAT LEGEND

1. ALL DIMENSIONS ARE IN FEET.
2. ALL CURVE DIMENSIONS ARE MEASURED ALONG THE ARC.
3. ALL BEARINGS ARE RELATED TO THE ADJACENT PLAT OF "PRAIRIE VIEW HILLS" AS RECORDED IN LIBER 15 OF PLATS PAGES 46, 47, 48 AND 49
4. CONCRETE MONUMENTS HAVE BEEN SET AT ALL POINTS MARKED "O"
5. LOT CORNERS HAVE BEEN MARKED WITH 1" X 18" STEEL ROD.

CURVE DATA

NUMBER	RADIUS	ARC	DELTA	CHORD	CHORD BRNG
2	359.74	439.51	070°00'00"	412.68	S59°00'00.0"E
3	425.74	286.87	038°36'25"	281.48	N74°41'47.5"W
4	404.26	128.66	018°14'05"	128.12	S33°07'02.5"E
5	25.00	35.88	082°14'05"	32.88	S01°07'02.5"E
6	197.00	120.34	035°00'00"	118.48	S57°30'00.0"W
7	50.00	42.23	048°23'40"	40.99	N80°48'10.0"W
8	75.00	362.32	276°47'20"	99.60	S15°00'00.0"E
9	50.00	42.23	048°23'40"	40.99	N50°48'10.0"E
10	263.00	160.66	035°00'00"	158.17	N57°30'00.0"E
11	25.00	35.88	082°14'05"	32.88	N81°07'02.5"E
12	404.26	72.21	010°14'05"	72.12	S62°52'57.5"E
13	340.19	451.25	076°00'00"	418.88	N74°00'00.0"E
14	331.79	110.03	019°00'00"	109.52	S45°30'00.0"W
15	274.19	363.70	076°00'00"	337.62	S74°00'00.0"W
16	338.26	259.77	044°00'00"	253.43	N46°00'00.0"W
17	425.74	123.40	016°36'25"	122.97	N32°18'12.5"W
18	25.00	36.04	082°36'25"	33.00	N00°41'47.5"E
19	217.00	117.41	031°00'00"	115.98	N57°30'00.0"E
20	50.00	61.83	070°51'09"	57.97	S71°34'25.5"E
21	75.00	328.37	250°51'09"	122.23	S16°25'34.5"W
22	DELETED FROM PLAT				
23	283.00	153.12	031°00'00"	151.26	S57°30'00.0"W
24	25.00	36.04	082°36'25"	33.00	S83°18'12.5"W

N

UNPLATTED

E. & W. 1/4 LINE OF SECTION 34

N87°35'43"E 1332.72'

34

35

36

EASEMENT FOR

PUBLIC UTILITIES

33

32

39

38

37

30

31

32

33

34

35

36

37

38

39

40

41

42

43

44

45

46

47

48

49

50

51

52

53

54

55

56

57

58

59

60

61

62

63

64

65

66

67

68

69

70

71

72

73

74

75

76

77

78

79

80

81

82

83

84

85

86

87

88

89

90

91

92

93

94

95

96

97

98

99

100

101

102

103

104

105

106

107

108

109

110

111

112

113

114

115

116

117

118

119

120

121

122

123

124

125

126

127

128

129

130

131

132

133

134

135

136

137

138

139

140

141

142

143

144

145

146

147

148

149

150

151

152

153

154

155

156

157

158

159

160

161

162

163

164

165

166

167

168

169

170

171

172

173

174

175

176

177

178

179

180

181

182

183

184

185

186

187

188

189

190

191

192

193

194

195

196

197

198

199

200

201

202

203

204

205

206

207

208

209

210

211

212

213

214

215

216

217

218

219

220

221

222

223

224

225

226

227

228

229

230

231

232

233

234

235

236

237

238

239

240

241

242

243

244

245

246

247

248

249

250

251

252

253

254

255

256

257

258

259

260

261

262

263

264

265

266

267

268

269

270

271

272

273

274

275

276

277

278

279

280

281

282

283

284

285

286

287

288

289

290

291

292

293

294

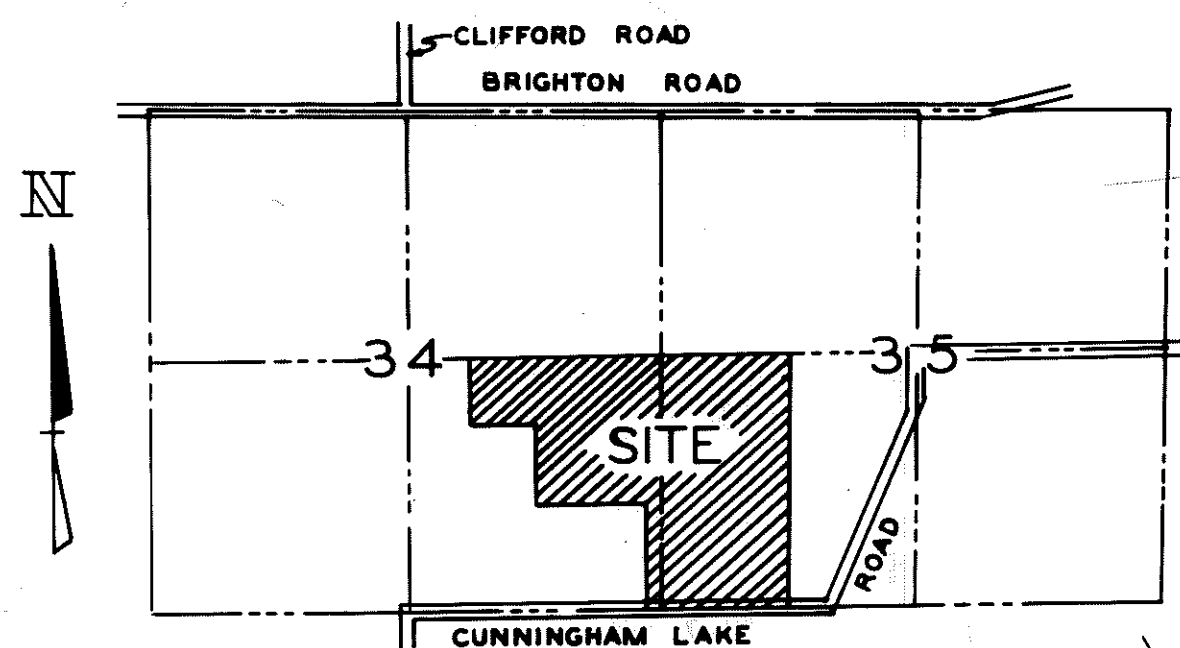
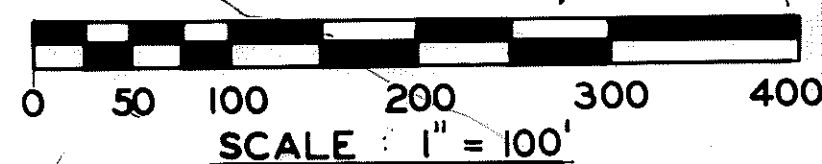
295

CURVE DATA

NUMBER	RADIUS	ARC	DELTA	CHORD	CHORD BRNG
13	340.19	451.25	076°00'00"	418.88	N74°00'00.0"E
14	331.79	110.03	019°00'00"	109.52	S45°30'00.0"W
15	274.19	363.70	076°00'00"	337.62	S74°00'00.0"W
25	265.79	88.14	019°00'00"	87.74	N45°30'00.0"E
26	352.72	344.74	056°00'00"	331.18	N27°00'00.0"E
27	333.53	553.01	095°00'00"	491.81	N46°30'00.0"E
28	955.19	200.05	012°00'00"	199.69	N88°00'00.0"E
29	25.00	39.27	090°00'00"	35.36	S53°00'00.0"E
30	390.59	265.87	039°00'00"	260.76	S11°30'00.0"W
31	507.88	274.79	031°00'00"	271.45	S46°30'00.0"W
32	525.78	697.42	076°00'00"	647.41	S24°00'00.0"W
33	573.88	310.50	031°00'00"	306.73	N46°30'00.0"E
34	456.59	310.79	039°00'00"	304.83	N11°30'00.0"E
35	263.00	137.20	029°53'19"	135.64	S22°56'39.5"W
36	197.00	120.13	034°56'19"	118.28	N20°25'09.5"W
37	263.00	160.38	034°56'19"	157.90	S20°25'09.5"E
38	197.00	35.01	010°10'54"	34.96	S32°47'52.0"E
39	25.00	47.87	109°42'25"	40.88	S27°08'47.5"W
40	889.19	186.23	012°00'00"	185.89	S88°00'00.0"W
41	399.53	662.45	095°00'00"	589.13	S46°30'00.0"W
42	286.72	280.24	056°00'00"	269.21	S27°00'00.0"W

"MYSTIC LAKE HILLS SUBDIVISION NO.2"

PART OF S.E. $\frac{1}{4}$ OF SEC. 34 & PART
OF S.W. $\frac{1}{4}$ OF SEC. 35, T.2N., R.5E
GENOA TOWNSHIP
LIVINGSTON COUNTY, MICHIGAN

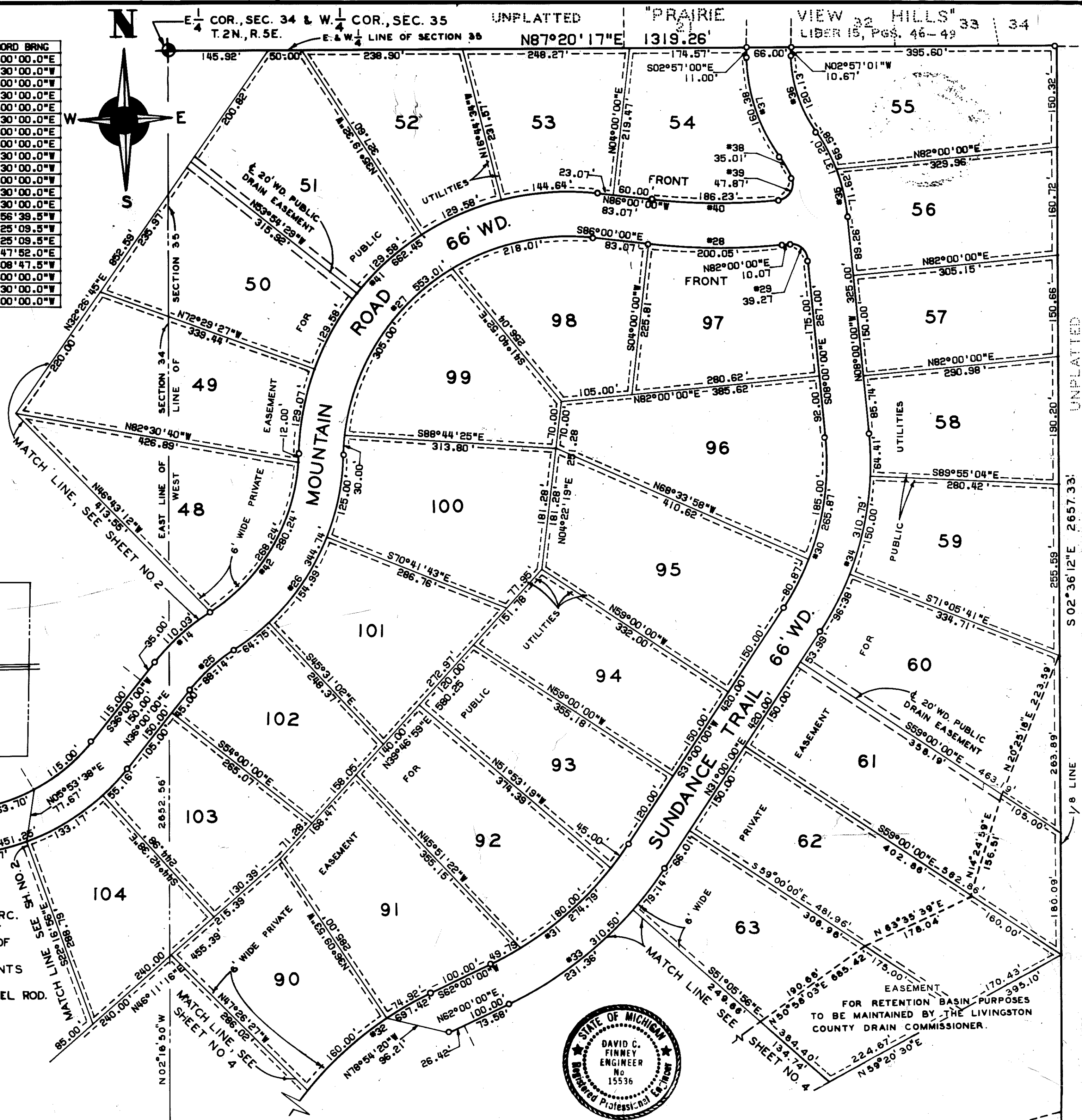


LOCATION MAP

SCALE: 1" = 2000'

PLAT LEGEND

1. ALL DIMENSIONS ARE IN FEET.
2. ALL CURVE DIMENSIONS ARE MEASURED ALONG THE ARC.
3. ALL BEARINGS ARE RELATED TO THE ADJACENT PLAT OF "PRAIRIE VIEW HILLS" AS RECORDED IN LIBER 15 OF PLATS, PAGES 46, 47, 48 AND 49.
4. CONCRETE MONUMENTS HAVE BEEN SET AT ALL POINTS MARKED "O".
5. LOT CORNERS HAVE BEEN MARKED WITH $\frac{1}{2}$ " X 18" STEEL ROD.



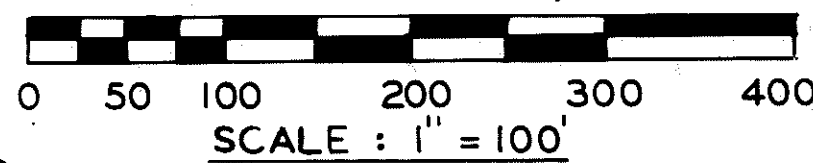
FOR RETENTION BASIN PURPOSES
TO BE MAINTAINED BY THE LIVINGSTON
COUNTY DRAIN COMMISSIONER.

CURVE DATA

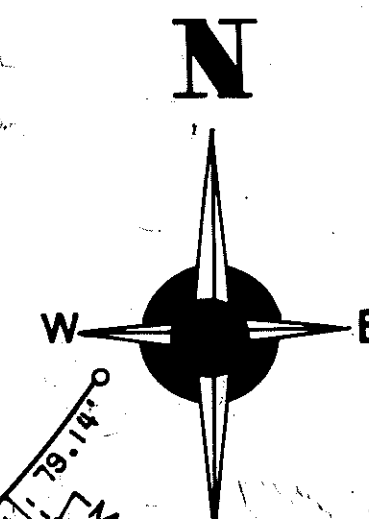
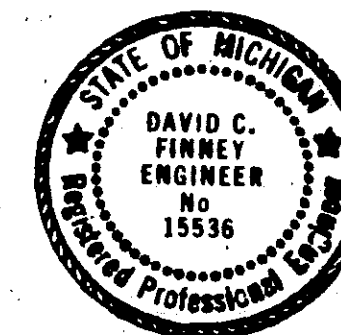
NUMBER	RADIUS	ARC	DELTA	CHORD	CHORD BRNG
32	525.78	697.42	076°00'00"	647.41	S24°00'00.0"W
33	573.88	310.50	031°00'00"	306.73	N46°30'00.0"E
43	378.33	429.20	065°00'00"	406.55	S46°30'00.0"E
44	197.00	263.18	076°32'42"	244.04	S40°43'39.0"E
45	25.00	39.27	090°00'00"	35.36	S42°32'42.0"W
46	25.00	39.27	090°00'00"	35.36	N47°27'18.0"W
47	263.00	351.36	076°32'42"	325.81	N40°43'39.0"W
48	25.00	39.27	090°00'00"	35.36	N34°00'00.0"W
49	197.00	226.93	066°00'00"	214.59	N44°00'00.0"E
50	50.00	42.23	048°23'40"	40.99	S78°48'10.0"E
51	75.00	362.32	276°47'20"	99.60	N13°00'00.0"W
52	50.00	42.23	048°23'40"	40.99	S52°48'10.0"W
53	263.00	302.95	066°00'00"	286.48	S44°00'00.0"W
54	25.00	39.27	090°00'00"	35.36	S56°00'00.0"W
55	312.33	354.33	065°00'00"	335.63	N46°30'00.0"W
56	459.78	609.88	076°00'00"	566.14	N24°00'00.0"E

"MYSTIC LAKE HILLS SUBDIVISION NO.2"

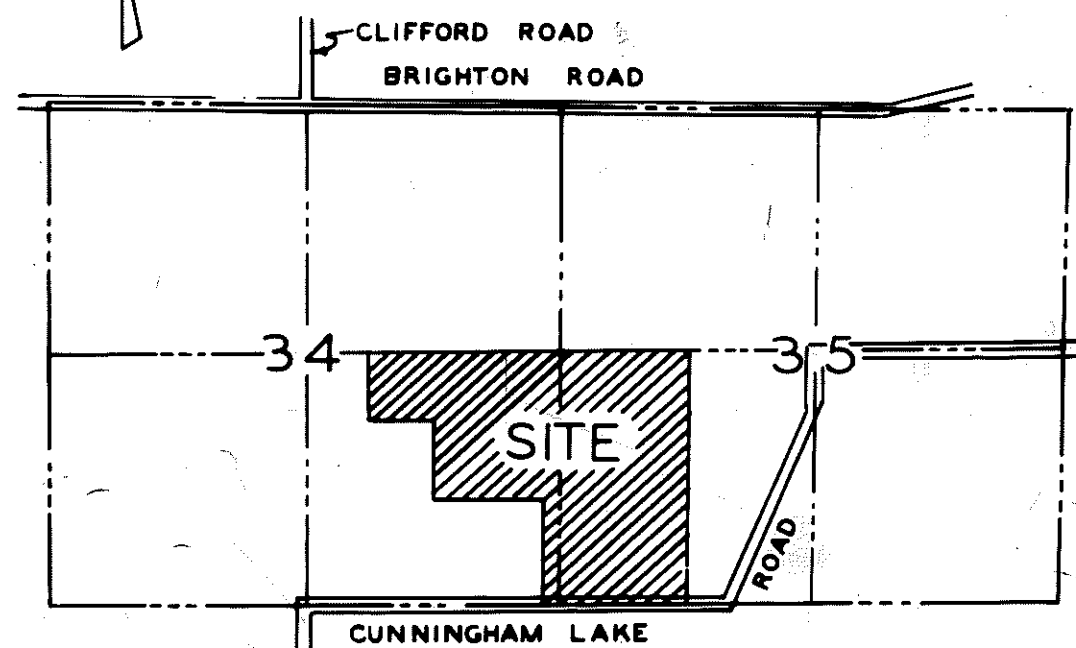
PART OF S.E. 1/4 OF SEC. 34 & PART
OF S.W. 1/4 OF SEC. 35, T.2N., R.5E.
GENOA TOWNSHIP
LIVINGSTON COUNTY, MICHIGAN



SHEET 4 OF 5 SHEETS



N



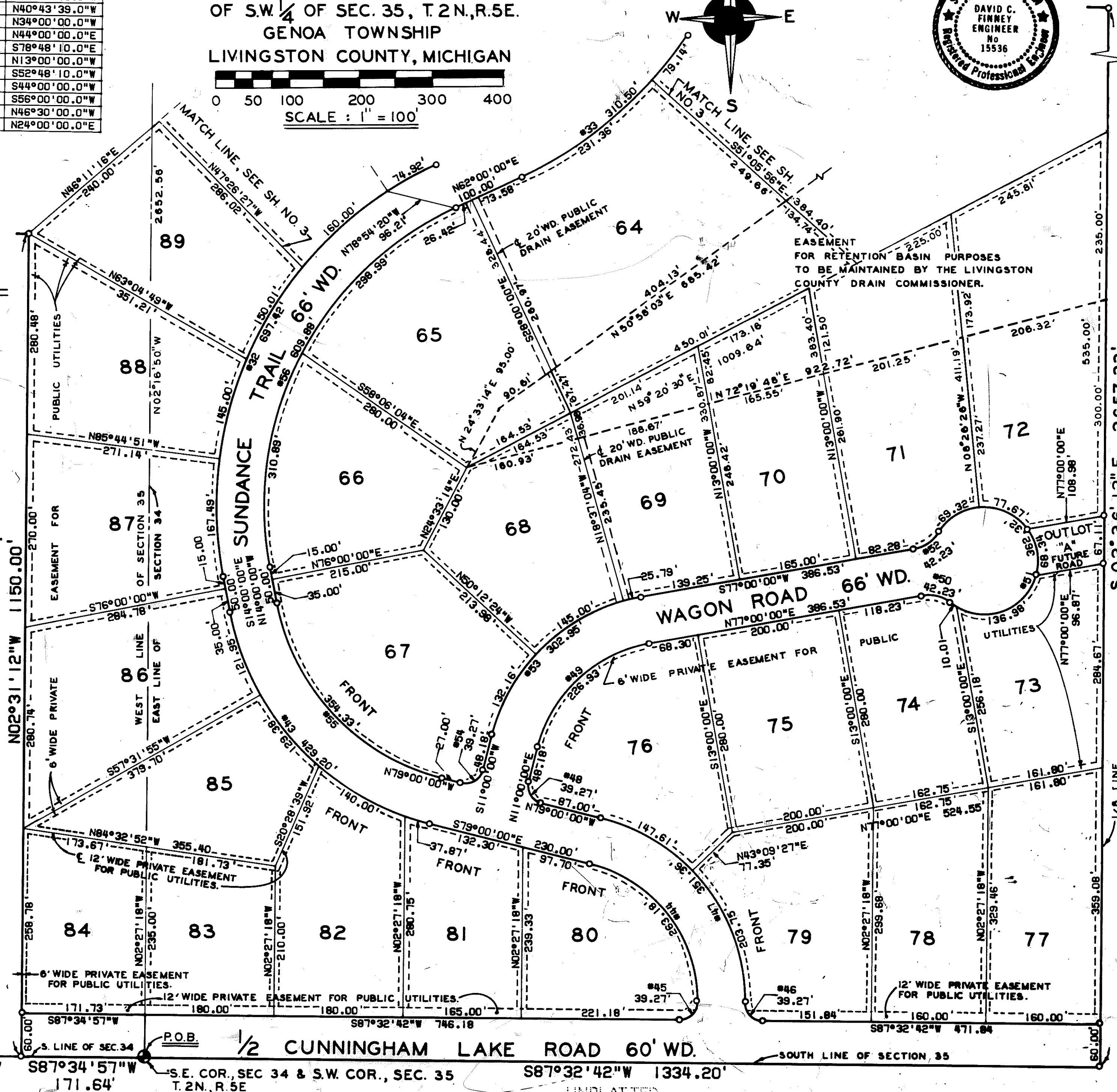
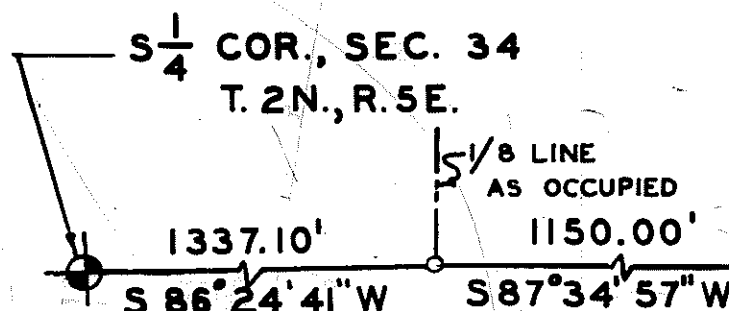
LOCATION MAP

SCALE: 1" = 2000'

PLAT LEGEND

1. ALL DIMENSIONS ARE IN FEET.
2. ALL CURVE DIMENSIONS ARE MEASURED ALONG THE ARC.
3. ALL BEARINGS ARE RELATED TO THE ADJACENT PLAT OF "PRAIRIE VIEW HILLS" AS RECORDED IN LIBER 15 OF PLATS, PAGES 46, 47, 48 AND 49.
4. CONCRETE MONUMENTS HAVE BEEN SET AT ALL POINTS MARKED "O".
5. LOT CORNERS HAVE BEEN MARKED WITH 1/2" X 1/8" STEEL ROD.

UNPLATTED



UNPLATTED

