

"MYSTIC LAKE HILLS SUBDIVISION"

PART OF THE NE 1/4 & PART OF THE NW 1/4 OF SECTION 34, T2N.-R5E.
GENOA TOWNSHIP, LIVINGSTON COUNTY, MICHIGAN.

SCALE: 1 INCH = 100 FEET
0 20 40 60 80 100 150 200 300
10 30 50 70 90

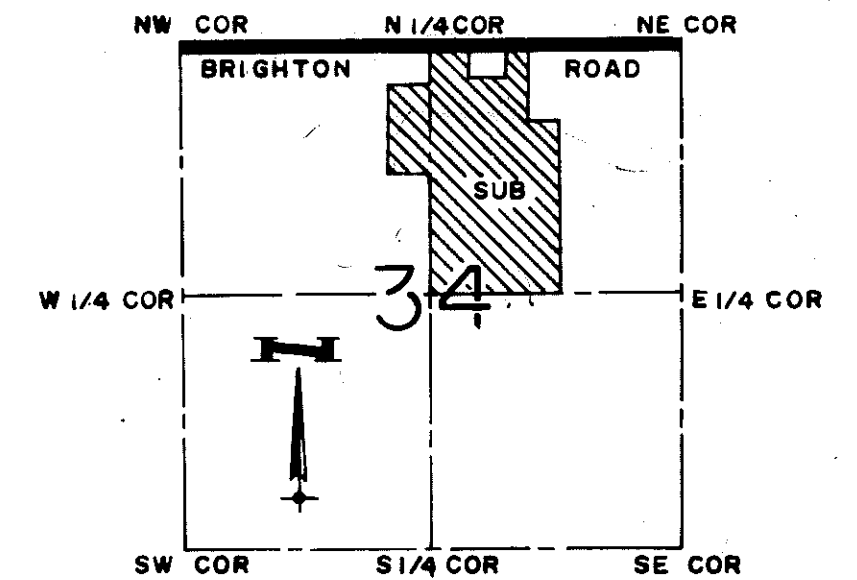
SHEET 1
OF 4 SHEETS

PLAT LEGEND

All dimensions are shown in feet.
All curvilinear dimensions are shown along the arc.
All bearings are in relation to "Forest View Estates No. 1" as recorded in Liber 14, Pages 7, 8 and 9, Livingston County Records.
The symbol "o" indicates a concrete monument.
All lot markers are 1/2 inch iron rods and are 18 inches in length.
--- indicates a 6ft. private easement for public utilities.

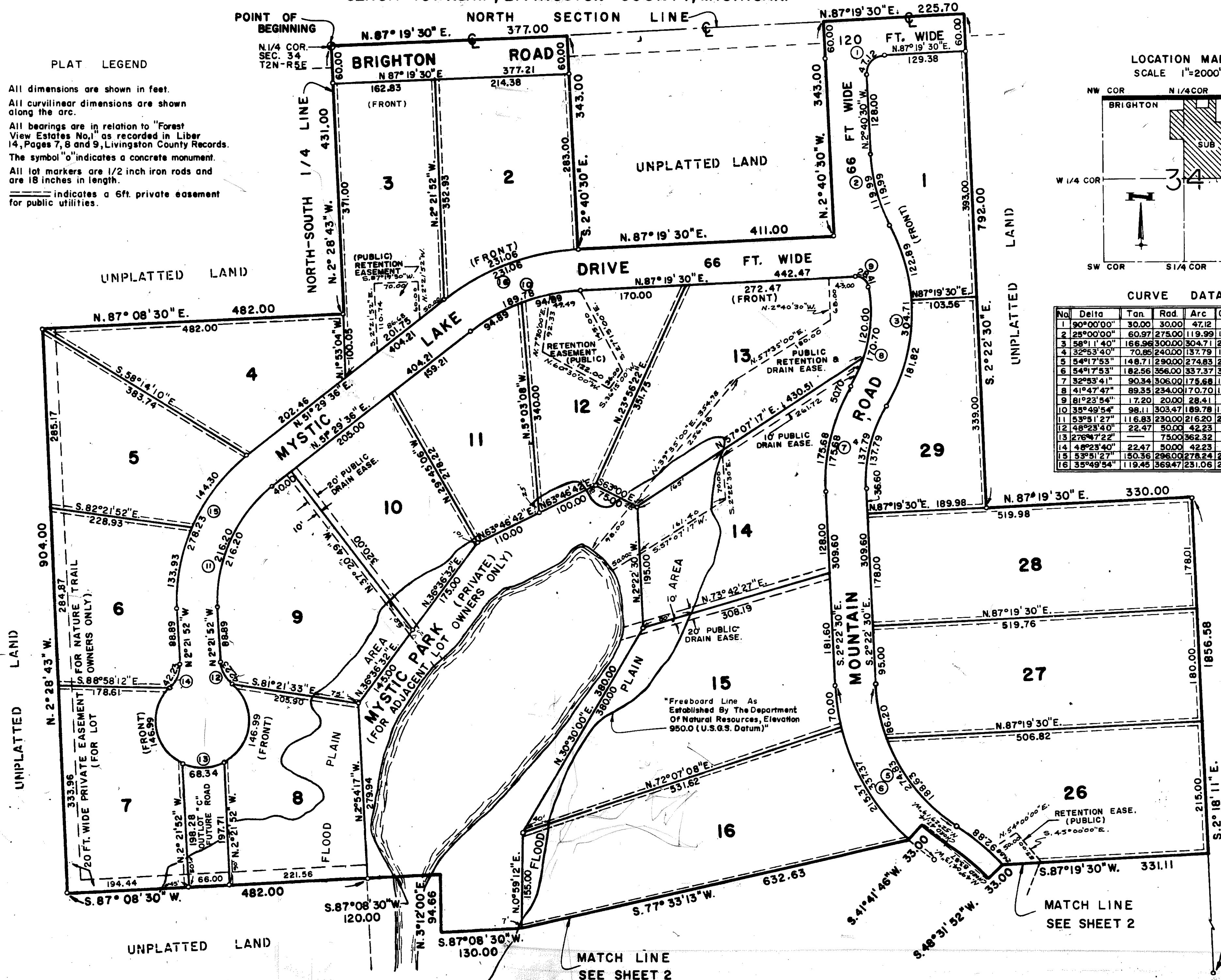
LOCATION MAP

SCALE 1"=2000'



CURVE DATA

No.	Delta	Tan.	Rad.	Arc	Chord	Ch. Brg.
1	90°00'00"	30.00	30.00	47.12	42.43	N42°19'27"E
2	25°00'00"	60.97	275.00	119.99	119.04	N15°10'30"W
3	58°11'40"	166.96	300.00	304.71	291.78	N1°25'20"E
4	32°53'40"	70.85	240.00	137.79	135.90	N14°04'20"E
5	54°17'53"	148.71	290.00	274.83	264.66	N29°31'26"W
6	54°17'53"	182.56	356.00	337.37	324.89	N29°31'26"W
7	32°53'41"	90.34	306.00	175.68	173.28	S14°04'20"W
8	41°47'47"	89.35	234.00	170.70	166.94	S9°37'16"W
9	81°23'54"	17.20	20.00	28.41	26.08	S51°56'33"E
10	35°49'54"	98.11	303.47	189.78	186.71	N69°24'33"E
11	53°51'27"	116.83	230.00	216.20	208.33	N24°33'52"E
12	48°23'40"	22.47	50.00	42.23	40.99	N26°33'44"W
13	27°47'22"	—	75.00	362.32	99.60	N87°36'08"E
14	48°23'40"	22.47	50.00	42.23	40.99	S21°49'59"W
15	53°51'27"	150.36	296.00	278.24	268.11	S24°33'52"W
16	35°49'54"	119.45	369.47	231.06	227.32	S69°24'33"W



SHEET 2
OF
4 SHEETS

MATCH LINE
SEE SHEET 1



This plat is subject to restrictions as required by Act 288 of 1967, as amended on certain lots with respect to the requirements of the Michigan Department of Natural Resources and/or the Michigan Department of Public Health, which are recorded in Liber 673, Page 185-193 INCL of records of this county.

CURVE DATA:						
No	Delta	Tan.	Rad.	Arc	Chord	Ch. Brg
17	61°12'17"	207.01	350.00	373.88	356.35	N26°04'15"W
18	87°47'15"	19.24	20.00	30.64	27.73	N48°46'53"W
19	82°47'36"	17.63	20.00	28.90	26.45	S45°55'42"W
20	44°57'30"	20.69	50.00	39.23	36.23	N17°56'51"W
21	276°36'54"		75.00	362.08	99.77	S82°07'11"E
22	51°39'24"	24.20	50.00	45.00	43.57	N30°21'34"E
23	61°12'17"	167.97	284.00	303.37	289.16	S26°04'14"E

