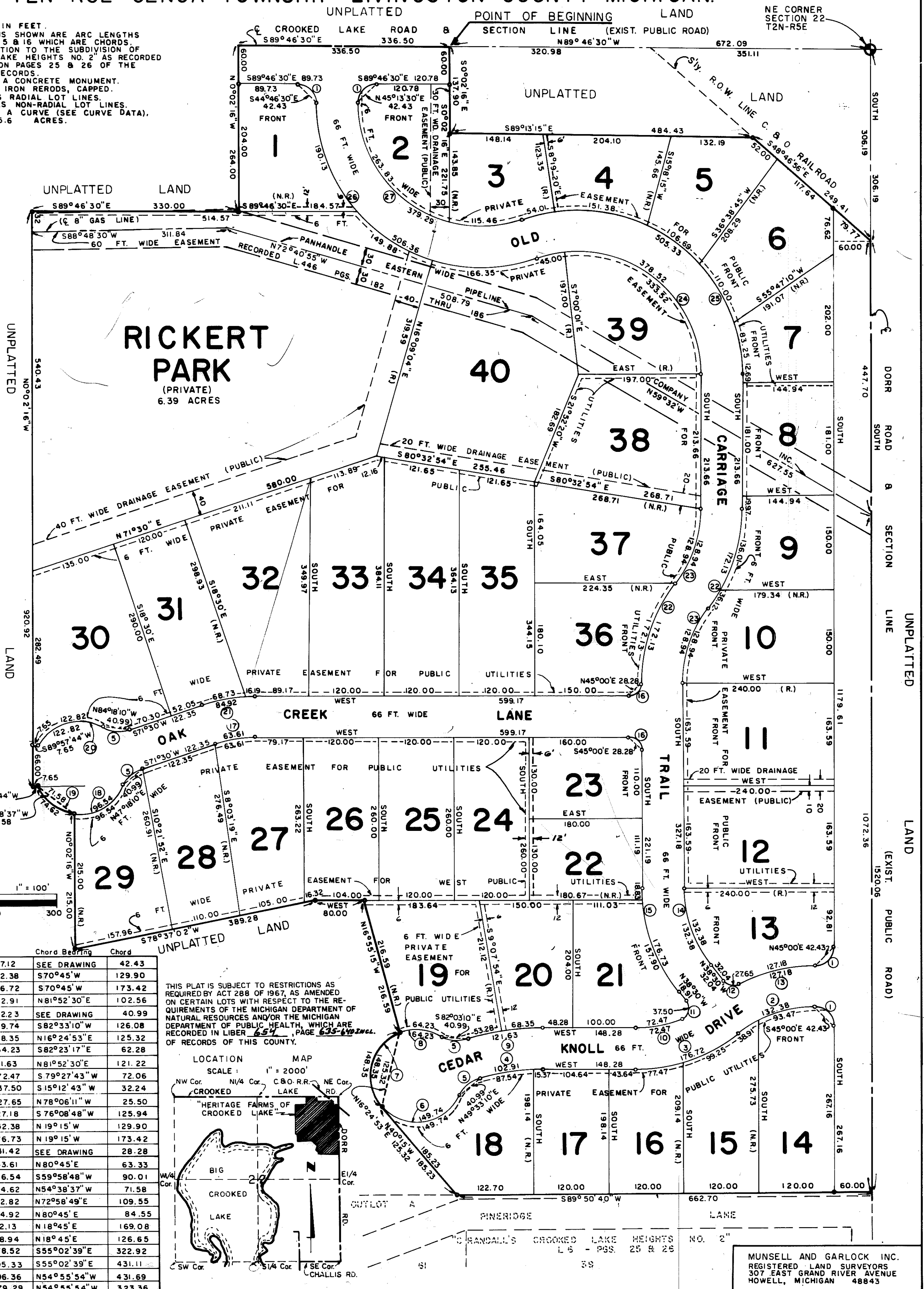


A SUBDIVISION OF PART OF THE NE 1/4 SECTION 22
T2N-R5E GENOA TOWNSHIP LIVINGSTON COUNTY MICHIGAN.

ALL DIMENSIONS ARE SHOWN IN FEET.
ALL CURVILINEAR DIMENSIONS SHOWN ARE ARC LENGTHS
EXCEPT FOR CURVES 1, 5 & 16 WHICH ARE CHORDS
ALL BEARINGS ARE IN RELATION TO THE SUBDIVISION OF
"CRANDALL'S CROOKED LAKE HEIGHTS NO. 2" AS RECORDED
IN LIBER 6 OF PLATS ON PAGES 25 & 26 OF THE
LIVINGSTON COUNTY RECORDS.
THE SYMBOL "C" INDICATES A CONCRETE MONUMENT.
LOT MARKERS ARE 1/2" X 18" IRON CHAINS, CAPPED.
THE SYMBOL (R.) INDICATES RADIAL LOT LINES.
THE SYMBOL (N.R.) INDICATES NON-RADIAL LOT LINES.
THE NUMBER ① INDICATES A CURVE (SEE CURVE DATA),
SUBDIVISION CONTAINS 45.6 ACRES.



SHEET 1 OF 3 SHEETS

MUNSELL AND GARLOCK INC.
REGISTERED LAND SURVEYORS
307 EAST GRAND RIVER AVENUE
HOWELL, MICHIGAN 48843