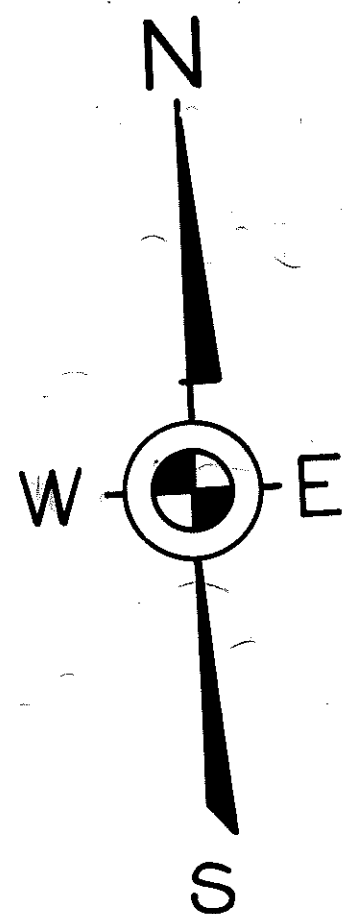
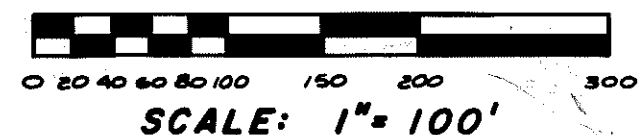


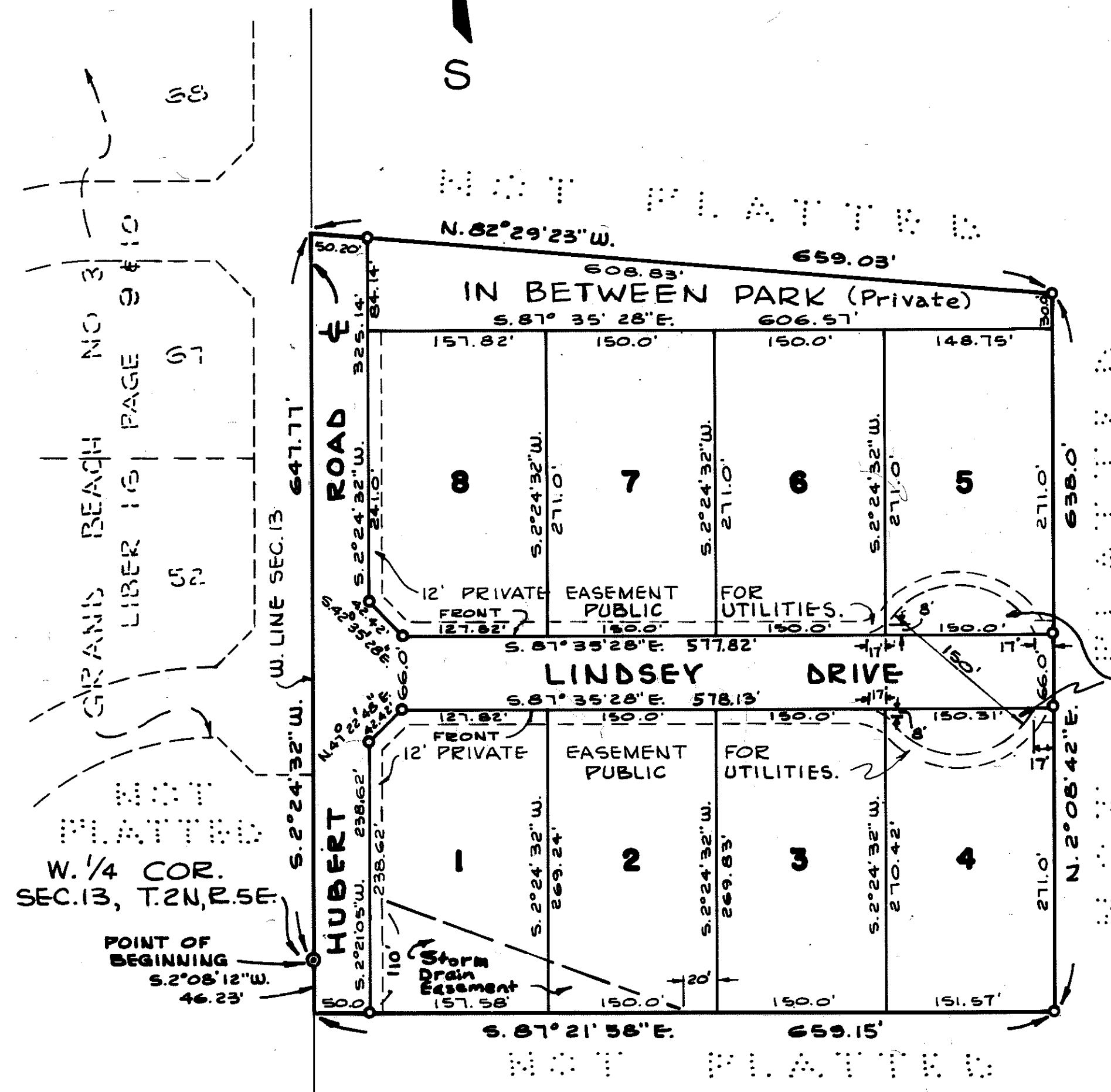
HERBST ESTATES

A SUBDIVISION OF PART OF THE NW 1/4 AND
SW 1/4 OF SEC. 13, T.2 N., R.5 E., GENOA
TOWNSHIP, LIVINGSTON COUNTY, MICHIGAN.



PLAT LEGEND

ALL DIMENSIONS ARE SHOWN IN FEET.
ALL CURVILINEAR DIMENSIONS ARE
SHOWN ALONG THE ARC.
THE SYMBOL "O" INDICATES A CONCRETE
MONUMENT.
ALL LOT MARKERS ARE 1/2" IRON
RODS, 18" LONG.
ALL BEARINGS ARE RELATED TO THE
BEARING SHOWN FOR THE E'LY LINE
OF GRAND BEACH NO. 3 SUB'N.
(LIBER 16, PAGES 9 & 10, LIVINGSTON
COUNTY RECORDS.)



CERTIFIED TRUE COPY OF
RECORDED PLAT

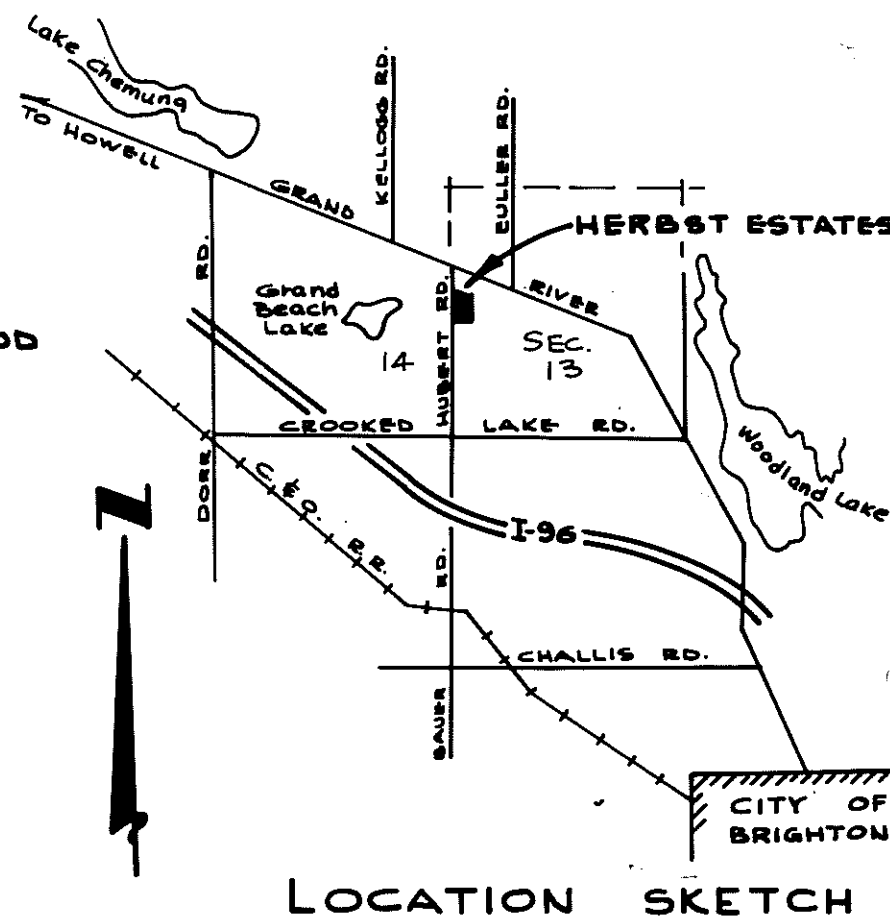
Loren E. Monroe

LOREN E. MONROE
STATE TREASURER

Richard E. Lomas
Richard E. Lomas, Plat Examiner

Date *March 26, 1979*

TEMPORARY
TURN-A-ROUND
EASEMENT.



PREPARED AND DRAFTED BY:

HERBERT L. MUNZEL

REG. PROF. ENGINEER #9244

222 WEST GRAND RIVER
BRIGHTON, MICHIGAN 48116

