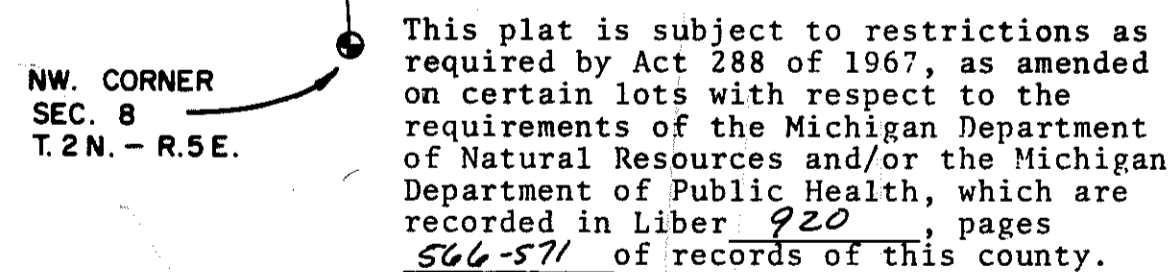
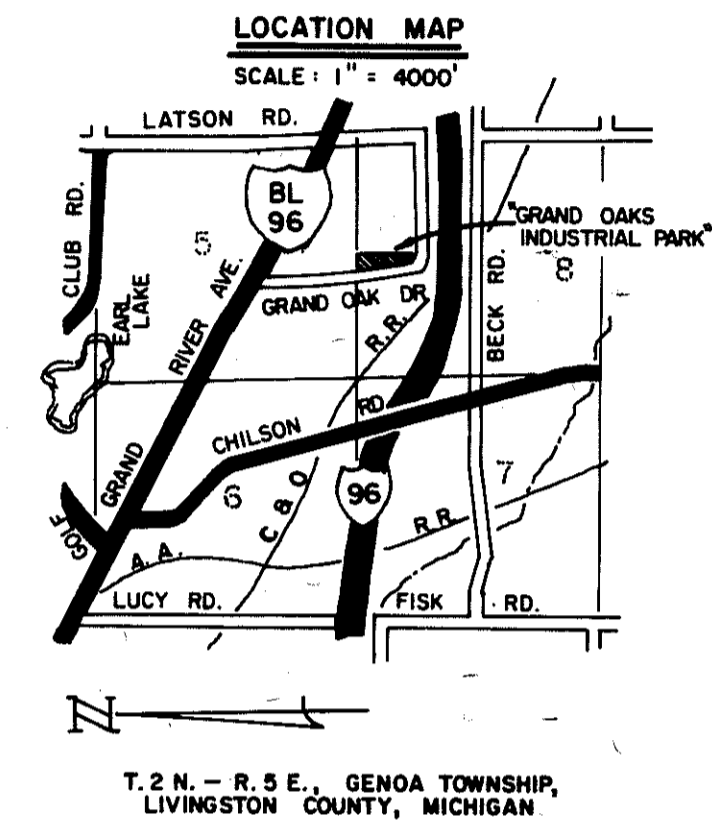
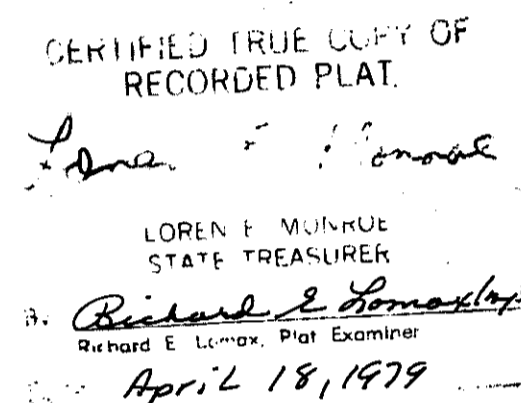
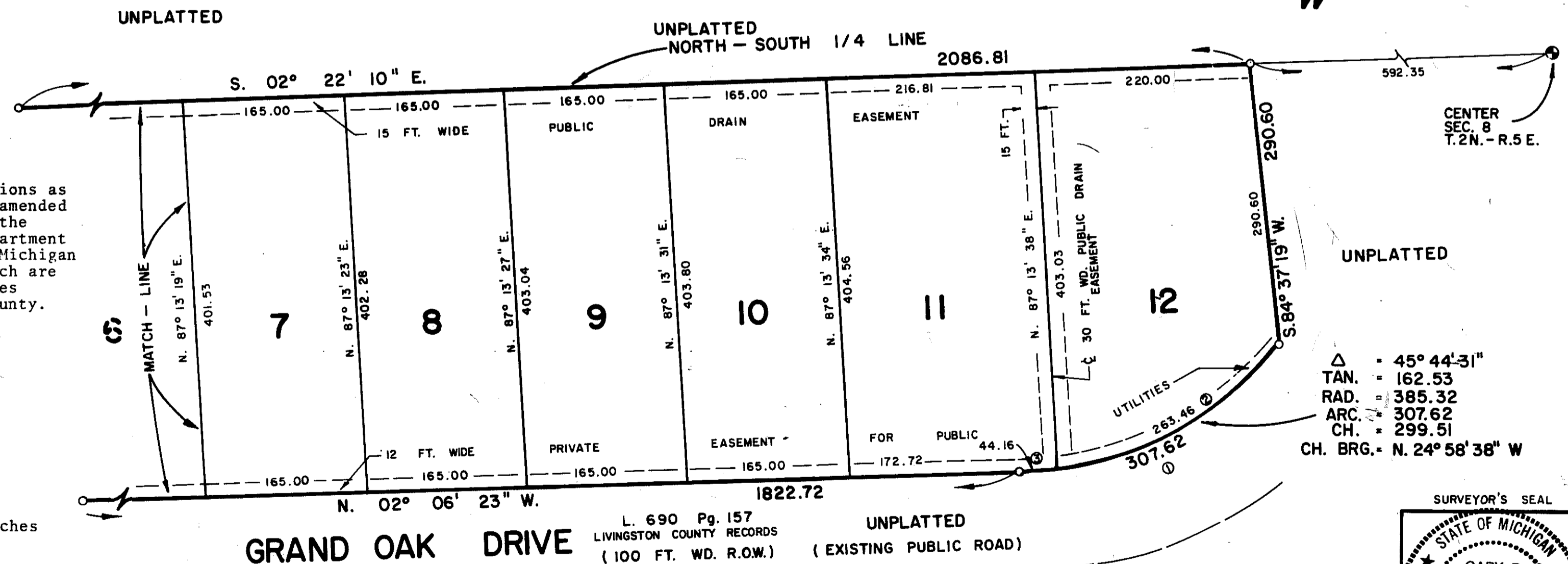


A PART OF THE NW. 1/4, SEC. 8, T.2N. - R.5E., GENOA TOWNSHIP, LIVINGSTON COUNTY, MICHIGAN

**SHEET 1 OF
4 SHEETS**



N°	DELTA	RADIUS	ARC	TAN.	CHORD	CH. BEARING
1	45° 44' 31"	385.32	307.62	162.53	299.51	N. 24° 58' 38" W.
2	39° 10' 31"	385.32	263.46	137.11	258.35	N. 28° 15' 41" W.
3	06° 34' 00"	385.32	44.16	22.10	44.14	N. 05° 23' 23" W.



BOSS ENGINEERING CO.
3121 E. Grand River
Howell, Michigan 48843

