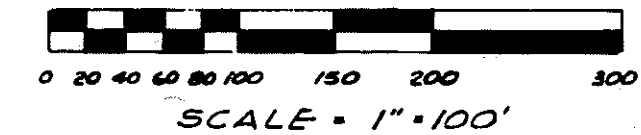


# GRAND BEACH NO. 3

A SUBDIVISION OF PART OF THE E. 1/2  
OF NE 1/4 AND E. 1/2 OF SE 1/4, SEC. 14, T.2 N., R.5 E.,  
GENOA TWP., LIVINGSTON CO., MICHIGAN



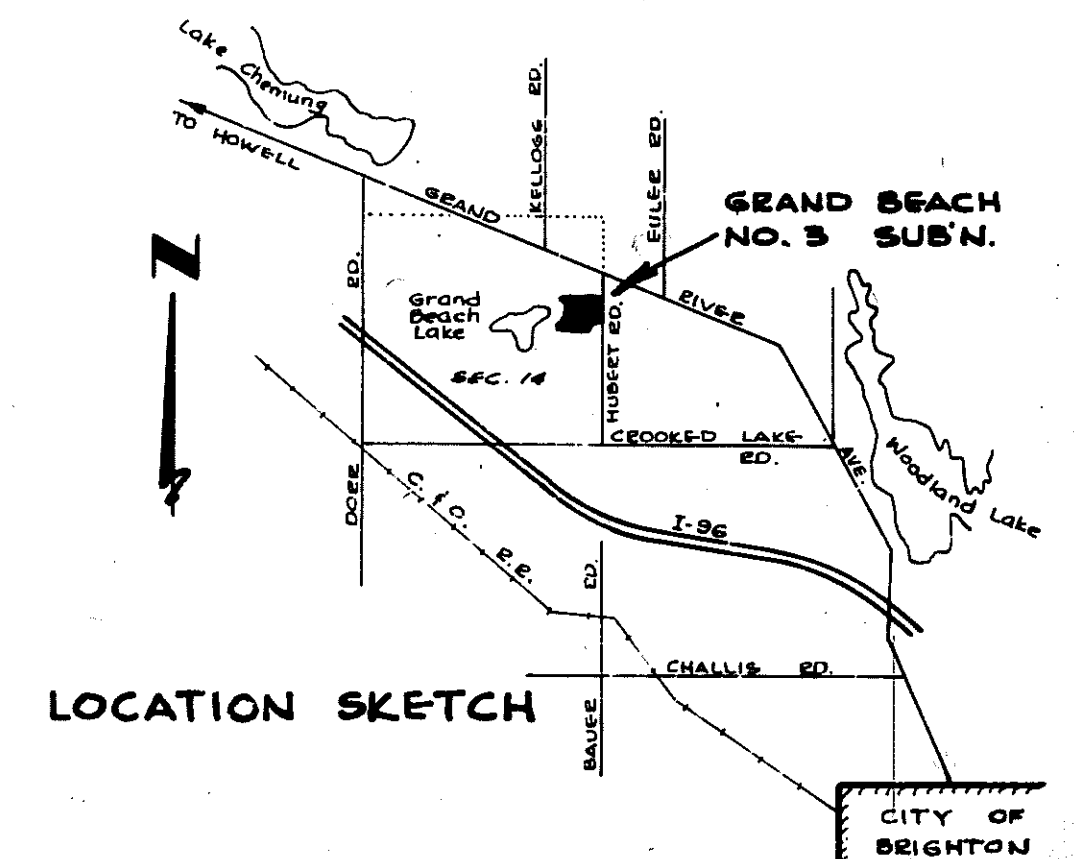
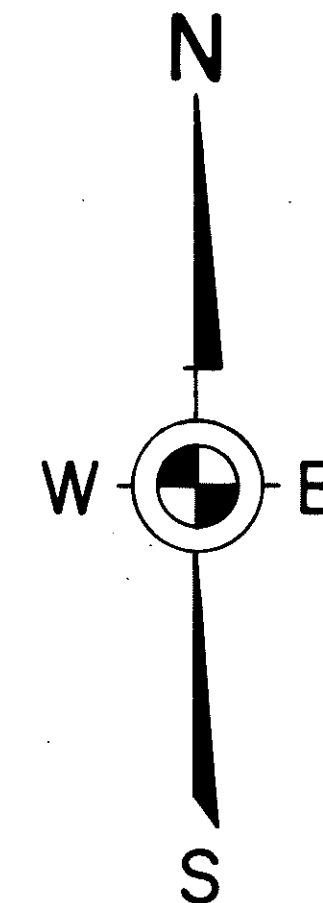
PREPARED AND DRAFTED BY:  
**HERBERT L. MUNZEL**  
REG. PROF. ENGINEER #2444 & SURVEYOR #10699  
222 W. GRAND RIVER  
BRIGHTON, MICH. 48116

## CURVE DATA

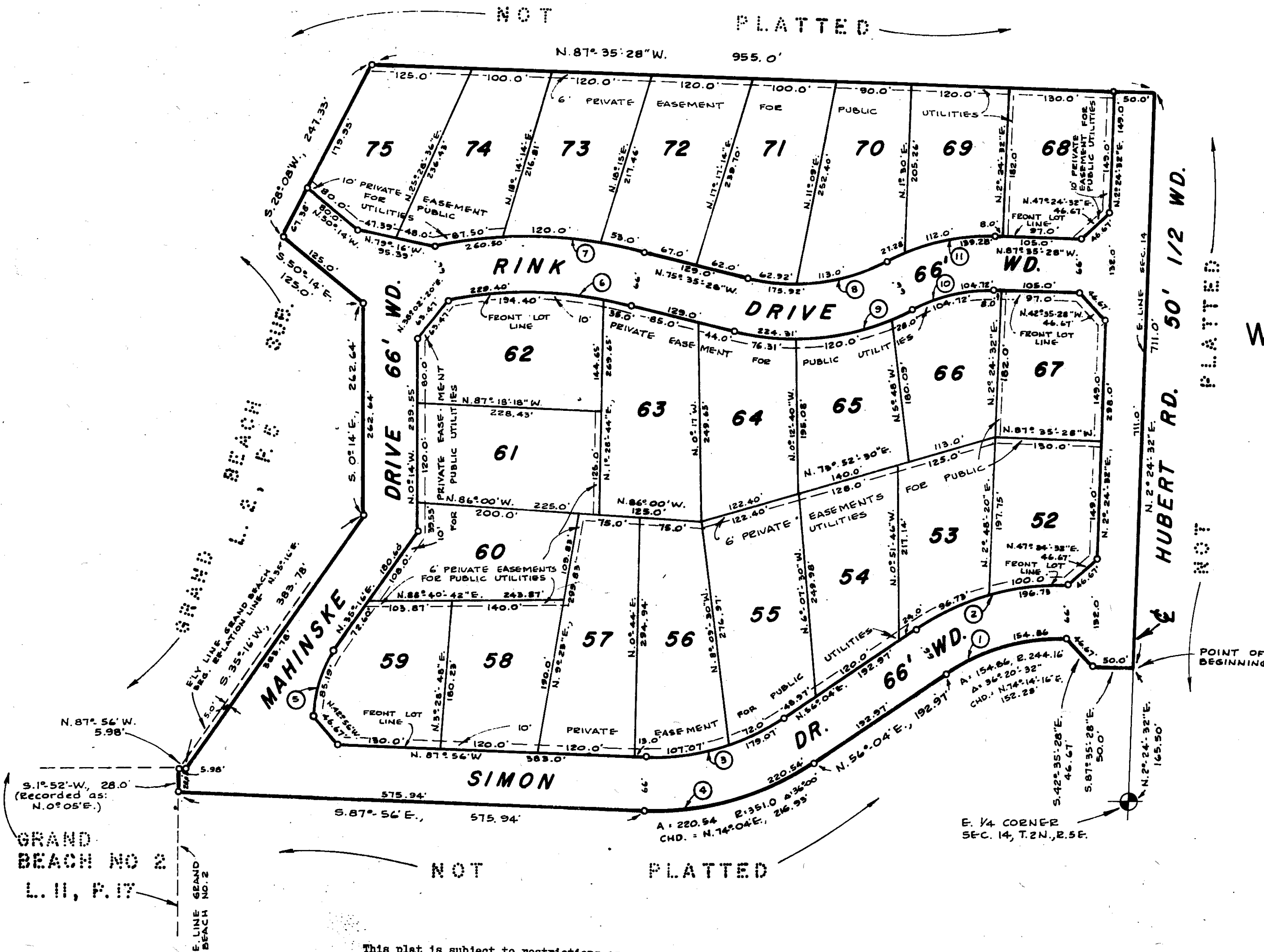
NO.	ARC	CENTRAL ANGLE	RADIUS	CHORD BEARING	CHORD
1	154.66	36° 20' 32"	244.16'	N. 74° 14' 16" E.	152.28'
2	196.75	"	310.16	"	193.45
3	179.07	36° 00'	285.0	N. 74° 04' E.	176.14
4	220.54	"	351.0	"	216.93
5	85.19'	35° 12'	147.03	N. 18° 40' E.	84.01
6	229.40	27° 00'	486.91	N. 89° 05' 28" W.	227.34
7	260.50	"	552.91	"	258.15
8	175.92	42° 00'	240.0	N. 83° 24' 32" E.	172.02
9	224.31	"	306.0	"	219.32
10	104.72	30° 00'	200.0	N. 71° 24' 32" E.	103.55
11	139.28	"	246.0	"	137.69

## PLAT LEGEND

1. ALL DIMENSIONS ARE SHOWN IN FEET AND DECIMALS THEREOF.
2. ALL CURVILINEAR DIMENSIONS ARE SHOWN ALONG THE ARC.
3. ALL BEARINGS ARE RELATED TO THE BEARING SHOWN FOR THE ELY LINE OF GRAND BEACH SUB. (L. 2, P. 5, LIVINGSTON CO. RECORDS.), OPPOSITE LOTS 1 THROUGH 8.
4. THE SYMBOL "C" INDICATES A CONCRETE MONUMENT.
5. ALL LOT MARKERS ARE 1/2" IRON PIPES AND ARE 18" LONG.



LOCATION SKETCH



This plat is subject to restrictions as required by Act 288 of 1967, as amended on certain lots with respect to the requirements of the Michigan Department of Natural resources and/or the Michigan Department of Public Health, which are recorded in Liber 635, Pages 156-160 of records of this county.