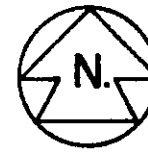
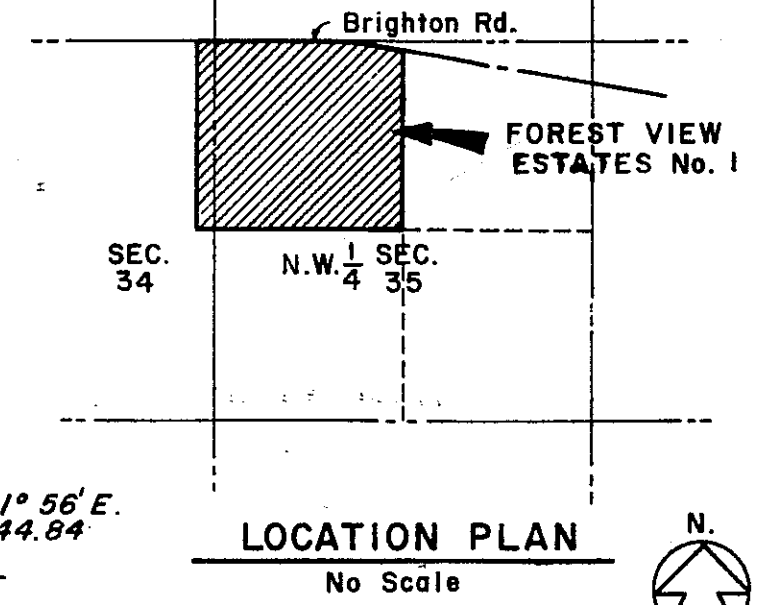


FOREST VIEW ESTATES NO. 1

PART OF THE N.E. $\frac{1}{4}$ OF SECTION 34 & PART OF THE N.W. $\frac{1}{4}$ OF SECTION 35, T.2N., R.5E., GENOA TOWNSHIP, LIVINGSTON COUNTY, MICHIGAN



Scale: One Inch = 100 Feet



LEGEND

1. All dimensions are in feet.
2. All curve dimensions are chords.
3. Concrete monuments have been placed at all points marked - "o".
4. Lot corners have been marked with $\frac{1}{2}$ " x 18" lengths of steel rod.
5. Bearings are based on true north by observation of Polaris (9-11-69).
6. ——— Indicates 6ft. Private easement for public utilities.

CURVE DATA

No.	Radius	Delta Angle	Chord Bearing	Chord Distance
1.	2387.04	10° 46' 10"	S. 87° 19' 05" E.	448.02
2.	2327.04	10° 46' 10"	S. 87° 19' 05" E.	436.75
3.	30.00	86° 12' 10"	N. 46° 15' 05" E.	41.00
4.	30.00	99° 26' 30"	S. 42° 58' 55" E.	45.77
5.	212.87	29° 10' 40"	N. 21° 19' 40" E.	107.14
6.	278.87	32° 46'	N. 19° 39' 50" E.	157.31
7.	15.00	90° 00' 00"	N. 09° 05' W.	21.22
8.	15.00	90° 00' 00"	N. 80° 55" E.	21.22
9.	216.48	51° 22' 30"	S. 28° 23' 45" E.	187.67
10.	282.48	51° 22' 30"	S. 28° 23' 45" E.	244.89
11.	56.32	45° 00' 00"	S. 25° 12' 30" E.	43.11
12.	56.32	45° 00' 00"	S. 19° 47' 30" W.	43.11
13.	70.00	270° 00'	S. 87° 17' 30" W.	98.99
14.	280.89	38° 37' 30"	S. 16° 36' 15" W.	185.79
15.	346.89	38° 37' 30"	S. 16° 36' 15" W.	229.45
16.	20.00	90° 00' 00"	S. 42° 17' 30" W.	28.28
17.	20.00	90° 00' 00"	N. 47° 42' 30" W.	28.28
18.	20.00	90° 31' 50"	S. 47° 26' 35" E.	28.41
19.	20.00	89° 28' 10"	S. 42° 33' 25" W.	28.15
20.	1142.29	08° 47' 10"	N. 02° 12' 55" E.	174.99
21.	1076.29	08° 47' 10"	N. 02° 12' 55" E.	164.88
22.	1142.29	08° 47' 10"	N. 02° 12' 55" E.	174.99
23.	1076.29	08° 47' 10"	N. 02° 12' 55" E.	164.88
24.	30.00	89° 28' 30"	N. 42° 33' 35" E.	42.23
25.	30.00	90° 29' 50"	N. 47° 25' 35" W.	42.61

RAYMOND J. KOSTECKE R.L.S.
160 Marlene St.
Milford, Michigan 48042