

SUPERVISOR'S PLAT OF FOREST BEACH

PART OF THE W. 1/2 OF SEC. 26, T.2N., R.5E., GENOA TWP., LIVINGSTON CO. MICHIGAN.

SCALE - 1" = 100'
Note: All dimensions shown hereon are in feet or decimals of feet.

DEDICATION

KNOW ALL MEN BY THESE PRESENTS, That I, Oscar Schoenhals, Supervisor of the Township of Genoa of Livingston County, State of Michigan, by virtue of authority in me vested by Section 3350, Compiled Laws of 1915, as amended, having been duly authorized by the Township Board, have caused the land described in the annexed plat to be surveyed, laid out and plotted to be known as "Supervisor's Plat of Forest Beach."

W. 1055591
Oscar Schoenhals, Supervisor of the Township of Genoa
Lillian J. Houser

STATE OF MICHIGAN } ss
County of Livingston }

On this first day of September, A.D. 1928, before me, a Notary Public in and for said County, personally came the above named Supervisor of the Township of Genoa, known to me to be the person who executed the above dedication and acknowledged the same to be his free act and deed as such Supervisor.

Lillian J. Houser
Notary Public in and for Livingston County

My Commission expires May 10th, 1930

CERTIFICATE OF MUNICIPAL APPROVAL

This plat was approved by the Township Board of the Township of Genoa at a meeting held Sept 1st, 1928.

CERTIFICATE OF APPROVAL BY COUNTY BOARD
This plat was approved on the 7th day of SEPTEMBER, 1928.

Judge of Probate

County Clerk

County Treasurer

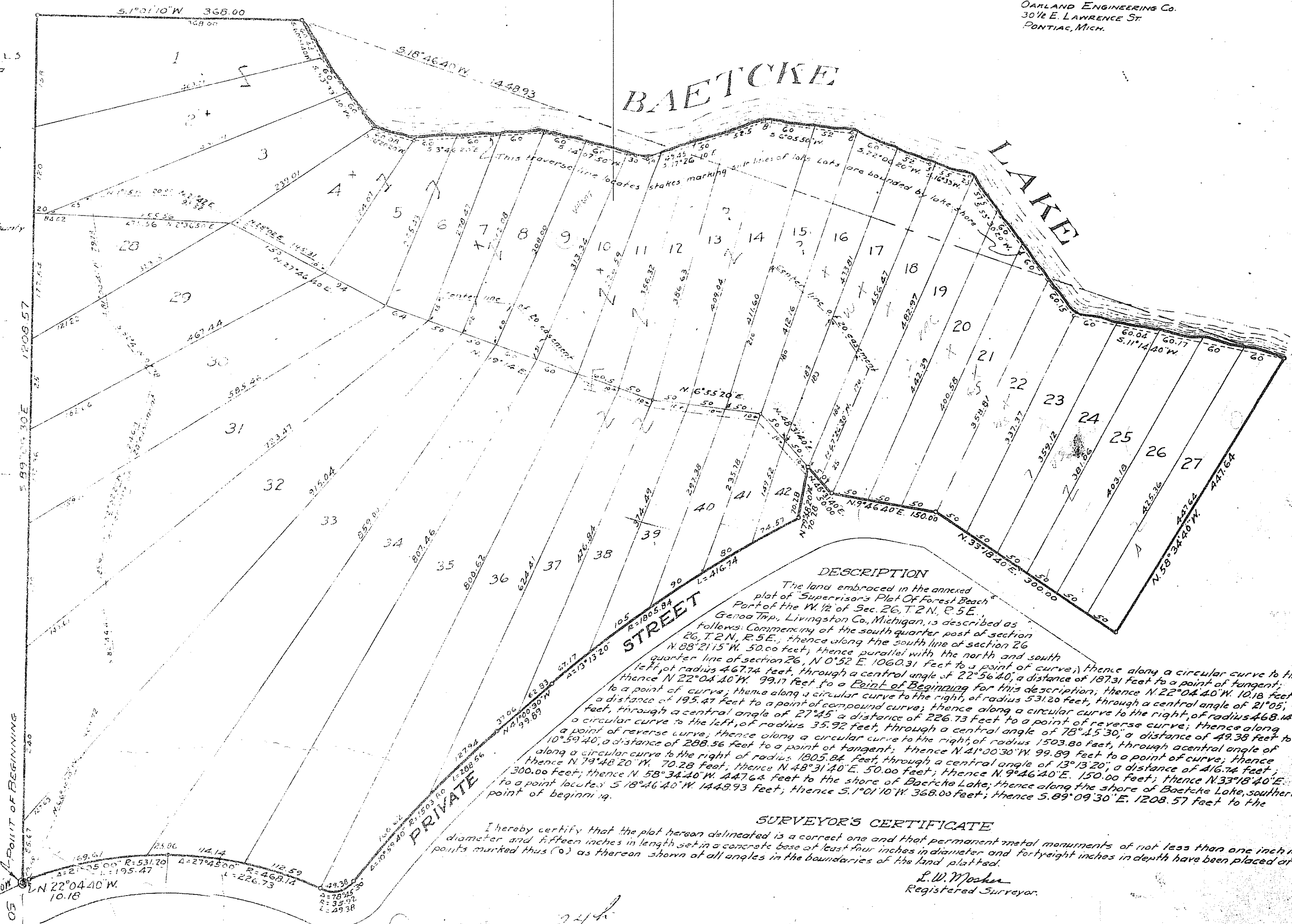
County Treasurer Certificate

Office of County Treasurer, Livingston Co., Mich.
I hereby certify that there are no tax liens or taxes held by the State or County against the land shown on this plat and that there are no tax liens or taxes held by the State or County against the five tracts shown on this plat and that the same are paid as shown by the records of this office.

County Treasurer

BAETCKE

LAKE



DESCRIPTION

The land embraced in the annexed plat of "Supervisor's Plat of Forest Beach" Part of the W. 1/2 of Sec. 26, T.2N., R.5E., Genoa Twp., Livingston Co., Michigan, is described as follows: Commencing at the south quarter post of section 26, T.2N., R.5E.; thence along the south line of section 26, N. 88° 21' 15" W. 50.00 feet; thence parallel with the north and south quarter line of section 26, N. 0° 52' E. 1060.31 feet to a point of curve; thence along a circular curve to the left, of radius 467.74 feet, through a central angle of 22° 56' 40", a distance of 187.31 feet to a point of tangent; thence N. 22° 04' 40" W. 99.17 feet to a Point of Beginning for this description; thence N. 22° 04' 40" W. 10.18 feet to a point of curve; thence along a circular curve to the right, of radius 531.20 feet, through a central angle of 21° 05', a distance of 195.47 feet to a point of compound curve; thence along a circular curve to the right, of radius 468.14 feet, through a central angle of 27° 45', a distance of 226.73 feet to a point of reverse curve; thence along a circular curve to the left, of radius 35.92 feet, through a central angle of 78° 15' 30", a distance of 49.38 feet to a point of reverse curve; thence along a circular curve to the right, of radius 1503.80 feet, through a central angle of 10° 59' 40", a distance of 288.56 feet to a point of tangent; thence N. 41° 00' 30" W. 99.89 feet to a point of curve; thence along a circular curve to the right, of radius 1805.84 feet, through a central angle of 13° 13' 20", a distance of 416.74 feet; thence N. 79° 48' 20" W. 70.28 feet; thence N. 48° 31' 40" E. 50.00 feet; thence N. 9° 46' 40" E. 150.00 feet; thence N. 33° 18' 40" E. 300.00 feet; thence N. 58° 34' 40" W. 447.64 feet to the shore of Baetcke Lake; thence along the shore of Baetcke Lake, southerly point of beginning; thence S. 18° 46' 40" W. 1448.93 feet; thence S. 1° 01' 10" W. 368.00 feet; thence S. 69° 09' 30" E. 1208.57 feet to the

SURVEYOR'S CERTIFICATE

I hereby certify that the plat hereon delineated is a correct one and that permanent metal monuments of not less than one inch in diameter and fifteen inches in length set in a concrete base of at least four inches in diameter and forty-eight inches in depth have been placed at points marked thus (o) as thereon shown at all angles in the boundaries of the land platted.

L. W. Mosher
Registered Surveyor.

N. 0° 52' E.
S. 1/4 P. 25, 1/4 LINE SEC. 26
T.2N., R.5E.