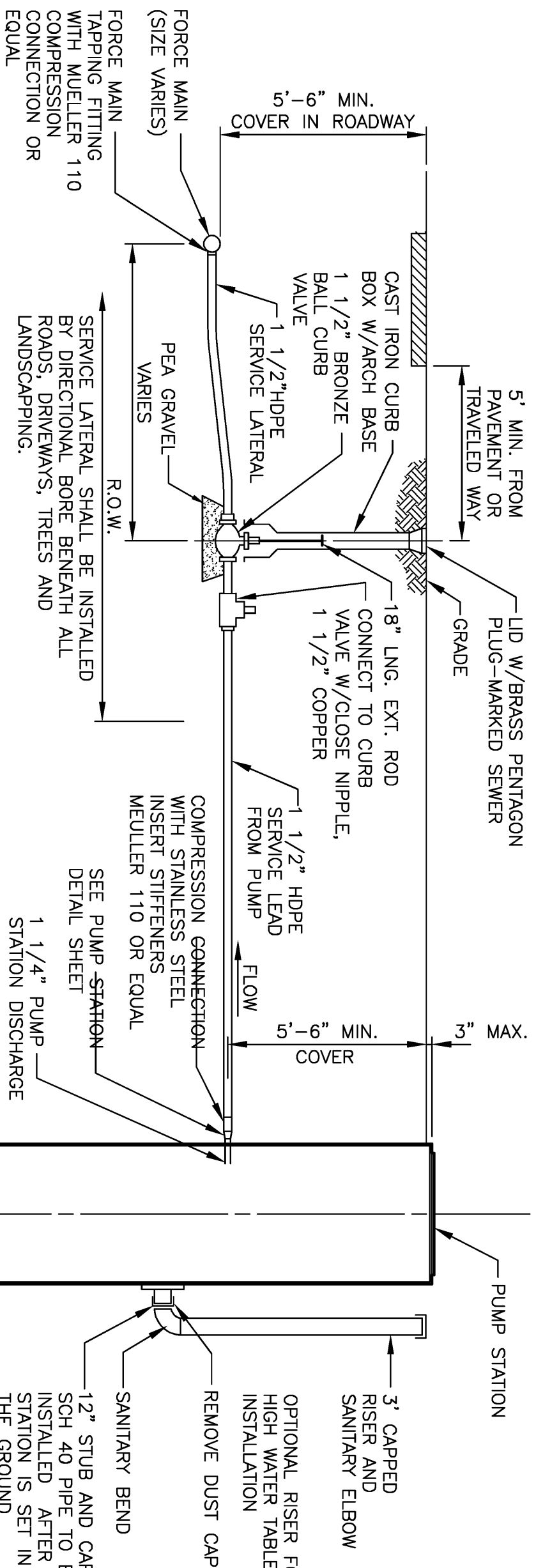
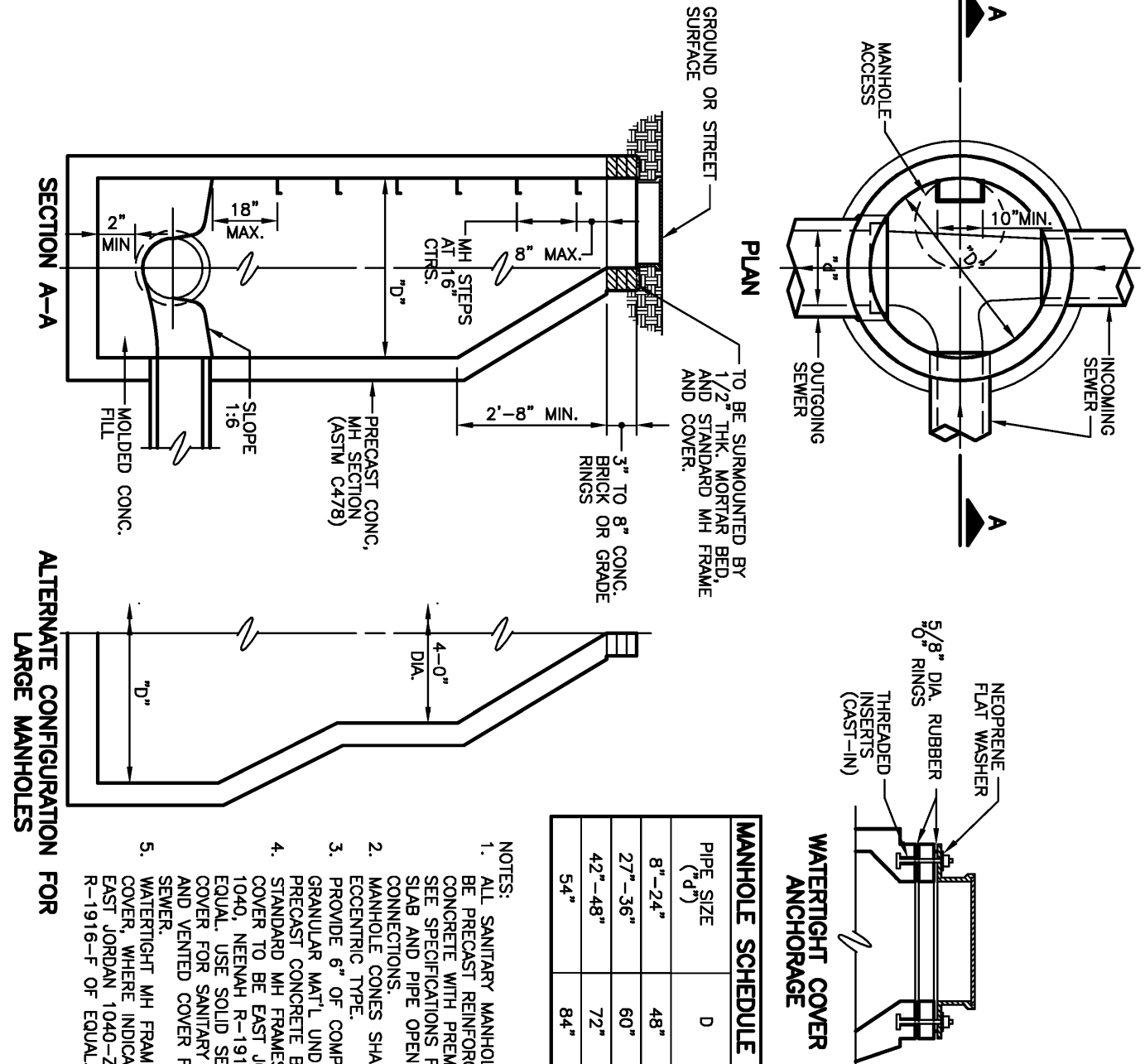


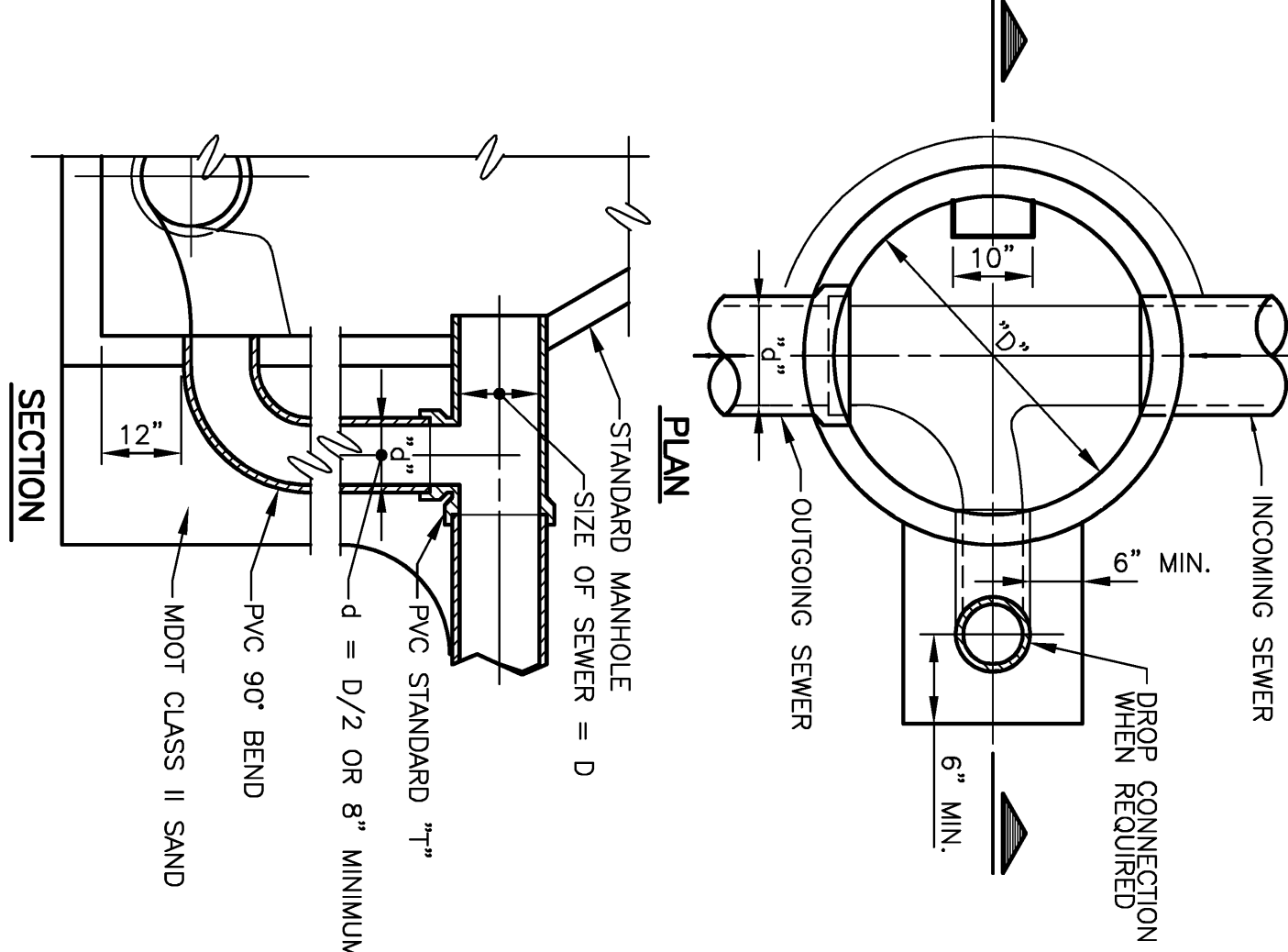
SANITARY SEWER LATERAL



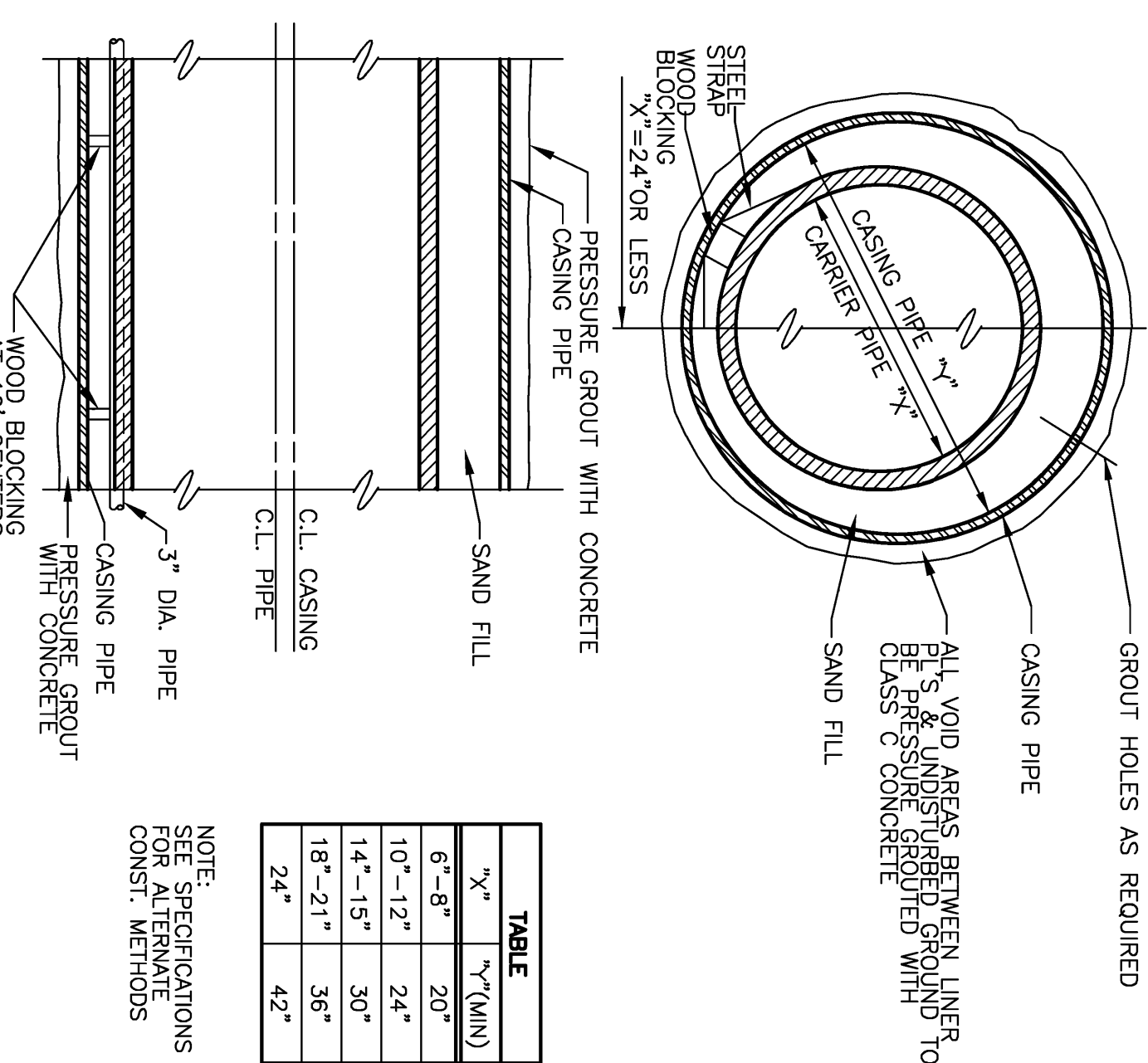
TYPICAL SERVICE LATERAL



STANDARD MANHOLE

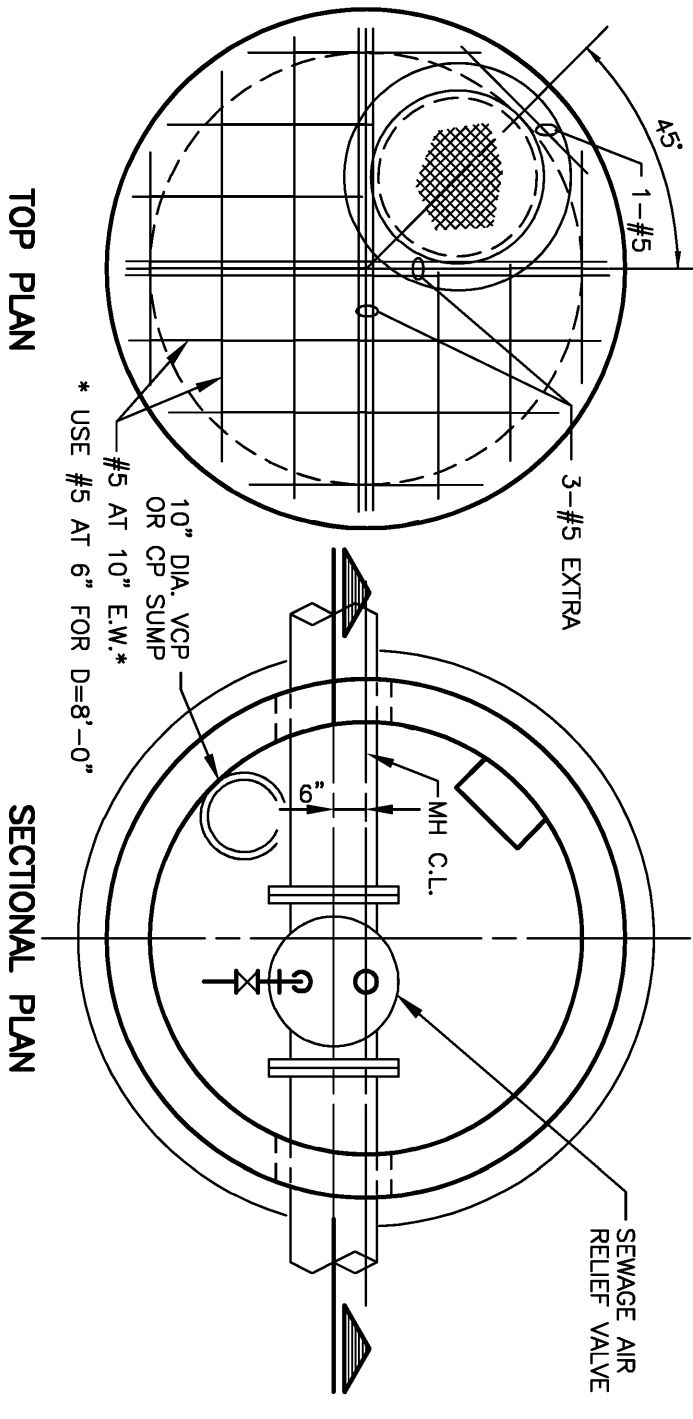


DROP CONNECTION

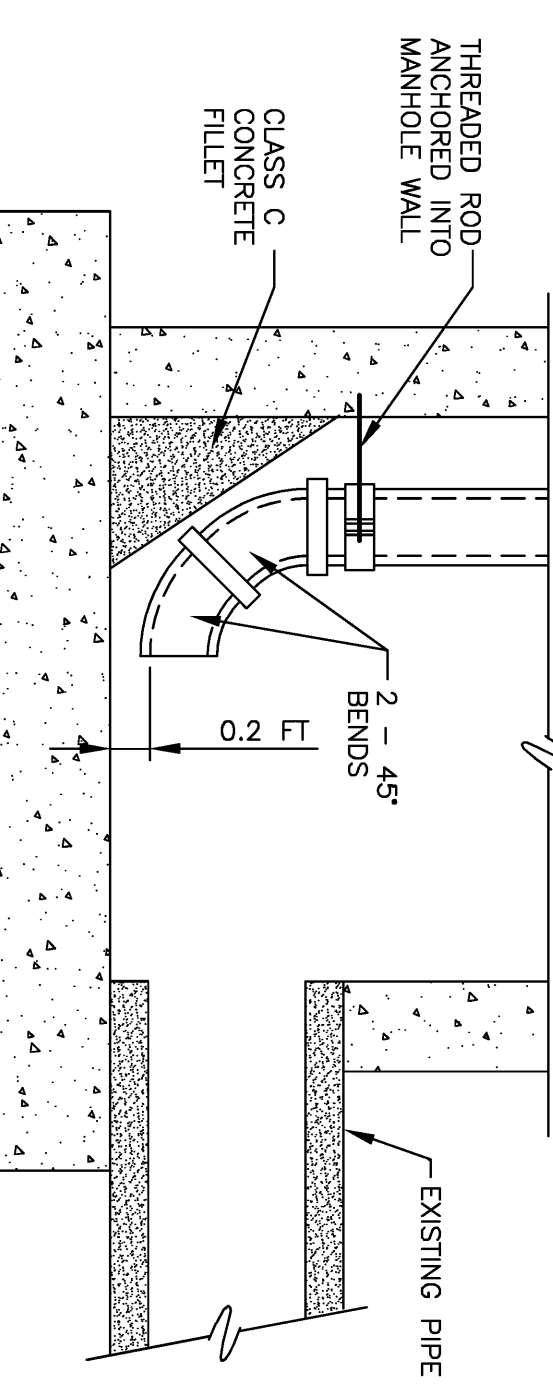
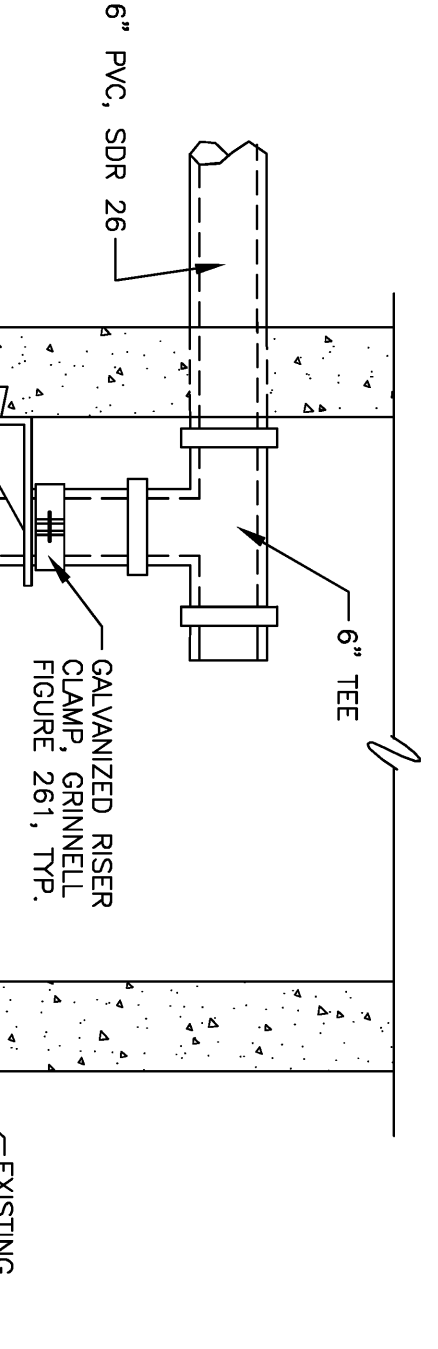


CASING PIPE

- NOTE:
1. PROVIDE ADAPTORS BETWEEN DISSIMILAR PIPE MATERIALS AND SIZES TO MAKE PRESSURE TIGHT CONNECTION.
 2. MATERIALS SHALL BE BRONZE OR COPPER.
 3. DETERMINED BY ENGINEER DURING CONSTRUCTION.
- TRACER WIRE REFER TO SECTION 15070, PRESSURE PROCESS PIPING FOR DETAILS.



AIR RELIEF STRUCTURE



INTERIOR SEWER LATERAL DROP CONNECTION

- NOTES:
1. COMPACTION PRESENTED AS MINIMUM STANDARD PROCTOR VALUES.
 2. MATERIALS AROUND THERMOPLASTIC PIPE WITH DIAMETER < 6 INCHES SHALL PASS 0.5 INCH SIEVE. MATERIALS AROUND OTHER PIPES SHALL PASS 1.5 INCH SIEVE.
 3. MATERIALS AROUND HDPE PIPE TO BE MDOT 6A OR 21AA.
 4. DRIVEN SURFACE IS DRIVEWAY, PARKING AREA, ROAD BED OR SHOULDER.
- TRENCH SLOPES IN ACCORDANCE WITH MOSHA REQUIREMENTS

