

"CHATAQUA COLONY"

A SUBDIVISION OF PARTS OF THE S.W. 1/4, SEC. 22
AND OF THE N.W. 1/4, SEC. 27, T.2N. R.5E.
GENOA TWP. LIVINGSTON CO. MICH.

DESCRIPTION OF LAND PLATTED

The land embraced in the annexed plat of "CHATAQUA COLONY".....
A Subdivision of parts of the S.W. 1/4, Sec. 22 and
of the N.W. 1/4, Sec. 27, T.2N. R.5E.....
Genoa Township, Livingston County Michigan.....
is described as follows:

Beginning at a point N.89°30'E. 201.0 ft. and
S.0°15'E. 281.49 ft. from the N.W. corner of
section 27, T.2 N. R.5 E. Michigan.
Running thence S.0°15'E. 15.46 ft; thence
S.65°05'E. 271.94 ft; thence N.48°39'E. 991.46 ft;
thence N.67°27'W. 100.0 ft; thence N.31°03'W.
165.20 ft; thence N.88°10'W. 172.89 ft; thence
S.43°17'E. 86.51 ft; thence S.47°14'W. 953.44 ft.
to the point of beginning.
Containing Lots numbered 1 to 20 inclusive and
Silver Anchor Park.

NOTE. All dimensions are given in feet and decimals
thereof.

SURVEYOR'S CERTIFICATE

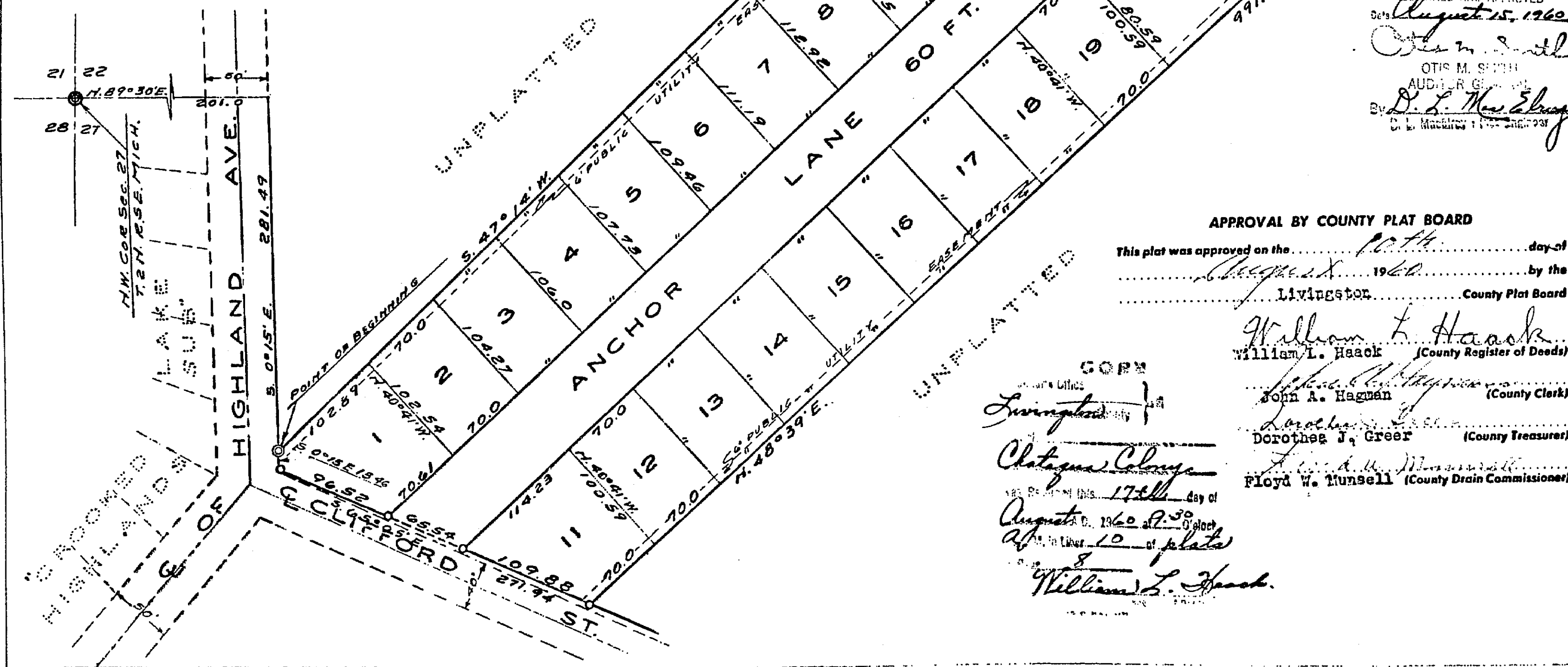
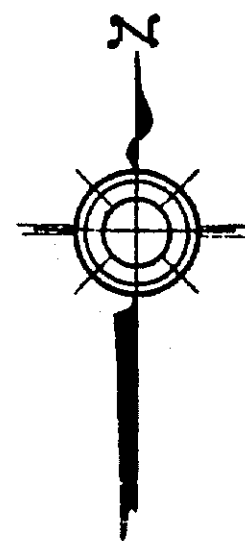
I hereby certify that the plat hereon delineated is a correct one and that permanent metal
monuments consisting of bars not less than one-half inch in diameter and 36 inches in
length, or shorter bars of not less than one-half inch in diameter lapped over each other
at least 6 inches with an over-all length of not less than 36 inches, encased in a concrete
cylinder at least 4 inches in diameter and 36 inches in depth have been placed at points
marked thus (O) as thereon shown at all angles in the boundaries of the land platted, at
all the intersections of streets, intersections of alleys, or of streets and alleys, and at the
intersections of streets and alleys with the boundaries of the plat as shown on said plat.

John C. Miller
Registered Land Surveyor Professional Engineer
John C. Miller

NOTE:

Silver Anchor Park and Lot # 20 extend
to Waters edge Only.

SCALE OF FEET - 1 IN. = 75 FT.



DEDICATION

KNOW ALL MEN BY THESE PRESENTS, that we.....
James O. Burgett and Annett Burgett, his wife.....
Donald C. Menge and Betty Menge, his wife.....

as proprietors, have caused the land embraced in the annexed plat to be surveyed,
laid out and platted, to be known as "CHATAQUA COLONY".....
A subdivision of parts of the S.W. 1/4 of sec. 22.....
and of the N.W. 1/4 of sec. 27, T.2 N. R.5 E.,
Genoa Township, Livingston County Michigan.....
and that the streets as shown on said plat are
hereby dedicated to the use of the public
Silver Anchor Park as shown on said plat is hereby
dedicated to the use of the Lot owners only.

Signed and Sealed in
the presence of
James O. Burgett (L.S.)
Annett Burgett (L.S.)
Donald C. Menge (L.S.)
Betty Menge (L.S.)
Kenneth M. Schultz (Witness)
Annett Burgett (Witness)
Donald C. Menge (Witness)
Betty Menge (Witness)

ACKNOWLEDGMENT

STATE of Michigan.....
County of Livingston.....
On this 11th day of September, A.D. 1960, before
me, *Kenneth M. Schultz*, a Notary Public in and for
said county appeared *James O. Burgett, Annett Burgett,*
Donald C. Menge and Betty Menge.....
to me personally known, who being each by me duly sworn did say that they
executed the above dedication, and acknowledged said
instrument to be

Kenneth M. Schultz
Notary Public Livingston County
My Commission expires 31st July 1963.

APPROVAL BY BOARD OF COUNTY ROAD COMMISSIONERS

This plat has been examined and was approved on the 3rd
day of August, 1960 by the Livingston
County Board of Road Commissioners.

Fred Berry (Chairman)
Norman S. Topping (Member)
Warren H. Anderson (Member)

CERTIFICATE OF MUNICIPAL APPROVAL

This plat was approved by the Township Board
of the Township of Genoa
at a meeting held Sept. 18, 1959 and that the width of lots is in
compliance with requirements of Section 30, Act 172, of 1929, as amended.

Dorothy Musch
Clerk

COUNTY TREASURER'S CERTIFICATE

Office of County Treasurer, Livingston County.
I hereby certify, that there are no tax liens or titles held by the State on the lands de-
scribed hereon, and that there are no tax liens or titles held by individuals on said lands,
for the five years preceding the 1st day of
August, 1960 and that the taxes for said period of
five years are all paid, as shown by the records of this office.

Dorothea J. Greer (County Treasurer)

APPROVAL BY COUNTY PLAT BOARD

This plat was approved on the 10th day of
August, 1960 by the
Livingston County Plat Board

William L. Haack (County Register of Deeds)
John A. Hagan (County Clerk)
Dorothea J. Greer (County Treasurer)
Floyd W. Munsell (County Drain Commissioner)

COPY
Livingston County
Chataqua Colony
August 17th day of
August 1960
William L. Haack