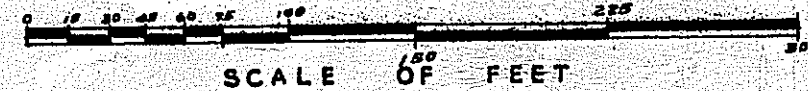


# "BACHMAN'S SUBDIVISION"

PARTS OF THE NW 1/4 SEC. 6 T. 2 N. R. 5 E. & OF THE SW 1/4 SEC. 31 T. 3 N. R. 5 E.  
GENOA & OCEOLA TOWNSHIPS LIVINGSTON CO. MICH.



## CERTIFICATE AS TO STATE TRUNK LINE OR FEDERAL AID ROADS

We hereby certify that said plat appears to include land located on a state trunk line or federal aid road.

Frank D. Bush  
John A. Hagman  
Jennie M. Eastman  
Floyd W. Munsell  
(County Plat Board)

## COUNTY TREASURER'S CERTIFICATE

Office of County Treasurer, Livingston County.  
I hereby certify, that there are no tax liens or titles held by the State on the lands described hereon, and that there are no tax liens or titles held by individuals on said lands, for the five years preceding the 7th day of November, 1954, and that the taxes for said period of five years are all paid, as shown by the records of this office.

This certificate does not apply to taxes, if any, now in process of collection by township, city or village collecting officers.

Jennie M. Eastman  
(County Treasurer)

Register's Office  
Livingston County, ss.  
Plat of Bachman's Subdivision,  
Genoa & Oceola Townships  
was Recorded this 7th day of  
January, A.D., 1955, at 4:00 o'clock  
P.M. in Liber 7 of Plats  
in Page 14  
William L. Shack  
Register of Deeds  
ORIGINAL ON FILE

I hereby certify this copy is a true copy of map or plat as recorded in the Register of Deeds for recording.

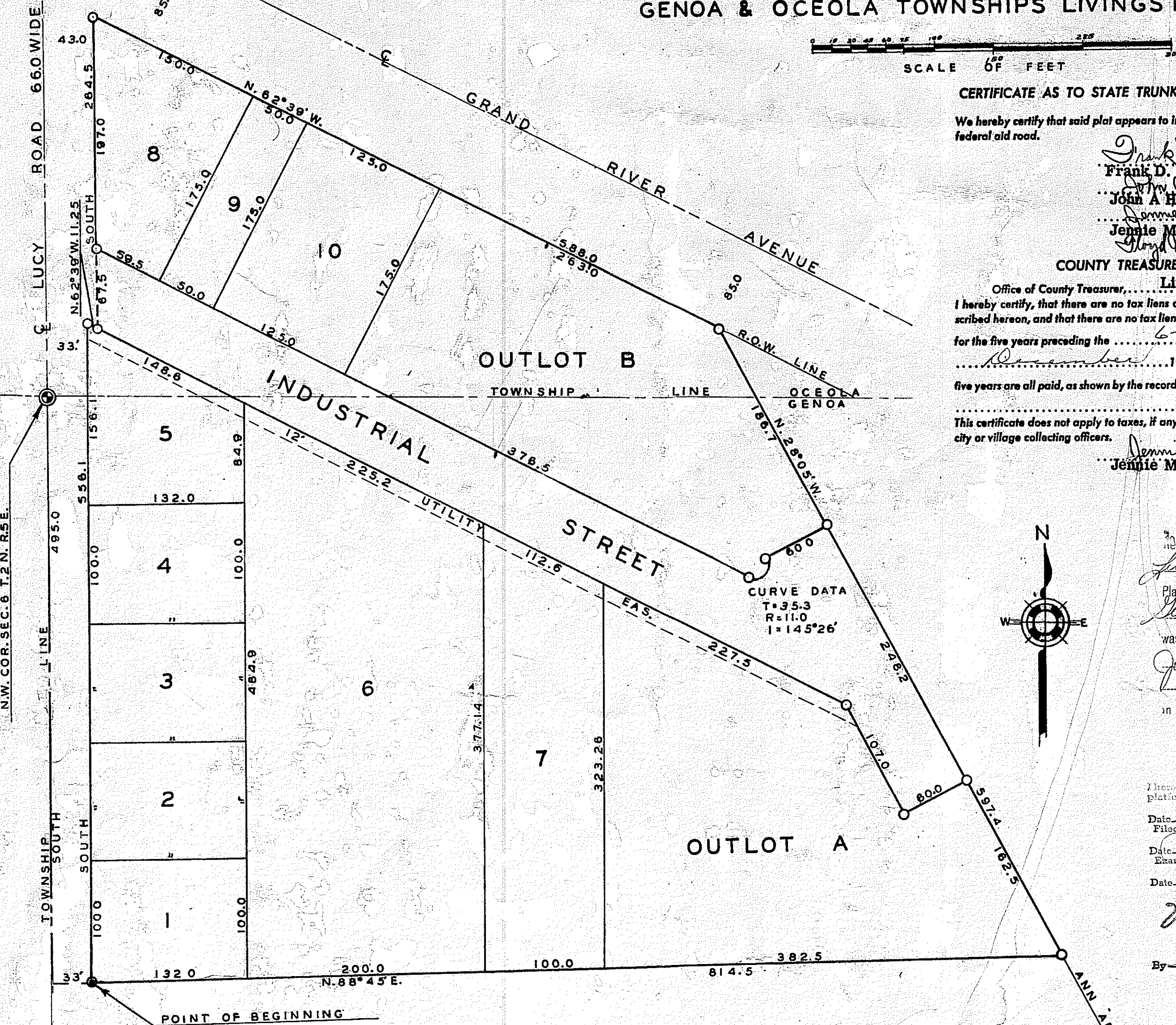
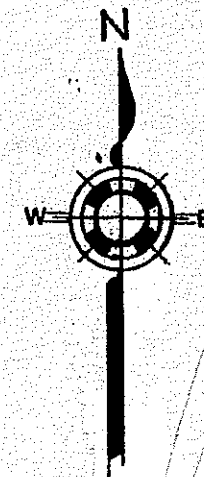
Date January 6, 1955  
Filed by Auditor General Dept.

Date January 29, 1955  
Examined and approved

Date January 6, 1955

Victor Targonski  
Auditor General

By \_\_\_\_\_ Plat Engineer



## MUNICIPAL APPROVAL

This plat was approved by the Township Board  
of the Township of Genoa  
at a meeting held Dec 2nd 1954  
Mary Lou Albrecht (Clerk)

## APPROVAL BY COUNTY PLAT BOARD

This plat was approved on the 7th day of  
December, 1954, by the  
County Plat Board  
Frank D. Bush (County Register of Deeds)  
John A. Hagman (County Clerk)  
Jennie M. Eastman (County Treasurer)  
Floyd W. Munsell (County Drain Commissioner)

## DEDICATION

KNOW ALL MEN BY THESE PRESENTS, that we, Gordon A. Bachman and Margaret H. Bachman his wife, as proprietors, have caused the land embraced in the annexed plat to be surveyed, laid out and platted, to be known as

"BACHMAN'S SUBDIVISION" parts of the NW 1/4 Sec. 6 T. 2 N. R. 5 E. & of the SW 1/4 Sec. 31 T. 3 N. R. 5 E. Genoa & Oceola Townships, Livingston Co., Michigan.

and that the streets as shown on said plat are hereby dedicated to the use of the public.

Signed and Sealed in the Presence of:  
Gordon A. Bachman  
Margaret H. Bachman  
Esther Jerkes (Witness)

## ACKNOWLEDGMENT

STATE OF MICHIGAN } ss.  
County of Livingston }  
On this 30th day of November, 1954, before me,  
a Notary Public in and for said County, personally came the above named  
Gordon A. Bachman and Margaret H. Bachman  
known to me to be the persons who executed the above dedication, and acknowledged the same to be their free act and deed.

Esther Jerkes  
Notary Public, Livingston County  
My Commission expires April 7, 1955

## DESCRIPTION OF LAND PLATTED

The land embraced in the annexed plat of "BACHMAN'S SUBDIVISION" parts of the NW 1/4 Sec. 6 T. 2 N. R. 5 E. & of the SW 1/4 Sec. 31 T. 3 N. R. 5 E. Genoa & Oceola Townships, Livingston Co., Michigan, is described as follows:  
Beginning at a point south 495.0 ft. from the N.W. cor. Sec. 6 T. 2 N. R. 5 E. Michigan running thence N. 88° 45' E. 33.0 ft., thence N. 28° 05' W. 597.4 ft., thence N. 62° 39' W. 588.0 ft., thence South 264.5 ft., thence N. 62° 39' W. 11.25 ft., thence South 556.1 ft. to place of beginning.  
CONTAINING LOTS NUMBERED 1 TO 10, AND OUTLOTS A & B  
Note: All dimensions are given in feet and decimals thereof.

## SURVEYOR'S CERTIFICATE

I hereby certify that the plat hereon delineated is a correct one and that permanent metal monuments consisting of bars not less than one-half inch in diameter and 48 inches in length, or shorter bars of not less than one-half inch in diameter lapped over each other at least 6 inches with an over-all length of not less than 48 inches, enclosed in a concrete cylinder at least 4 inches in diameter and 48 inches in depth have been placed at points marked thus (.....) as thereon shown at all angles in the boundaries of the land platted, at all the intersections of streets, intersections of alleys, or of streets and alleys, and at the intersections of streets and alleys with the boundaries of the plat as shown on said plat.

John C. Miller  
Registered Land Surveyor or Registered Professional Engineer

## APPROVAL BY BOARD OF COUNTY ROAD COMMISSIONERS

This plat has been examined and was approved on the 30th day of December, 1954, by the  
County Board of Road Commissioners

Ross J. Robb (Chairman)  
Fred Berry (Member)  
Melvin Hibner (Member)

## MUNICIPAL APPROVAL

This plat was approved by the Township Board  
of the Township of Oceola  
at a meeting held Nov 30th 1954  
Orlando Daniels (Clerk)

APPROVED  
Charles M. Ziegler  
STATE HIGHWAY COMMISSIONER