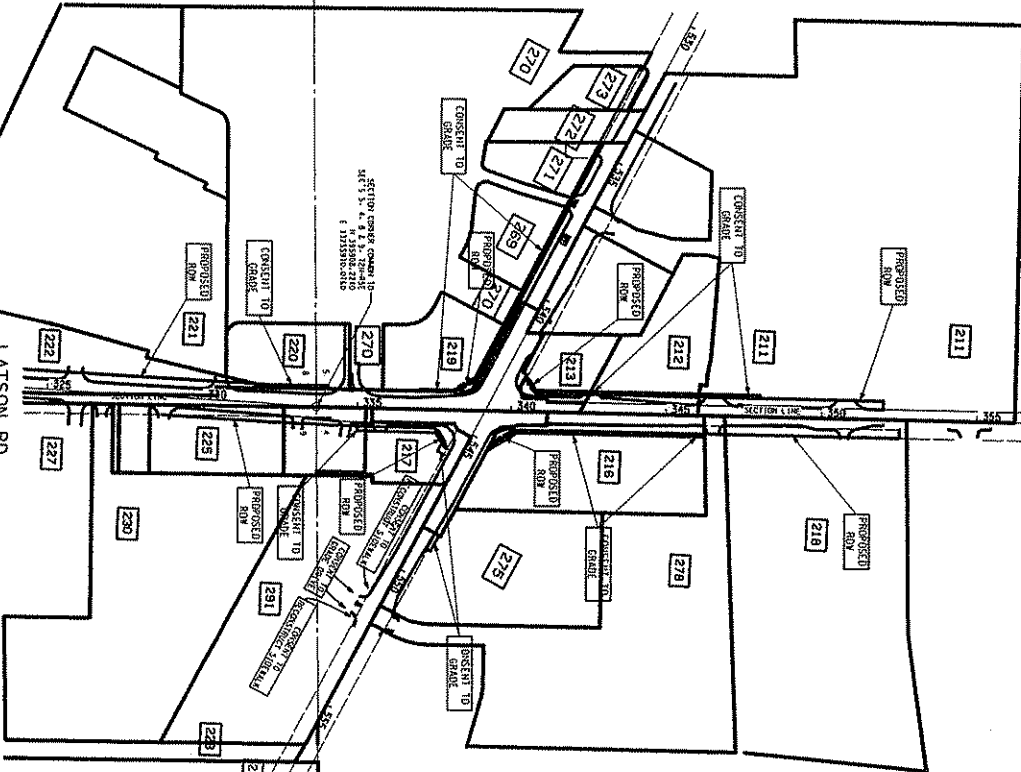




GRAND RIVER AVE.

LATSON RD

LATSON RD



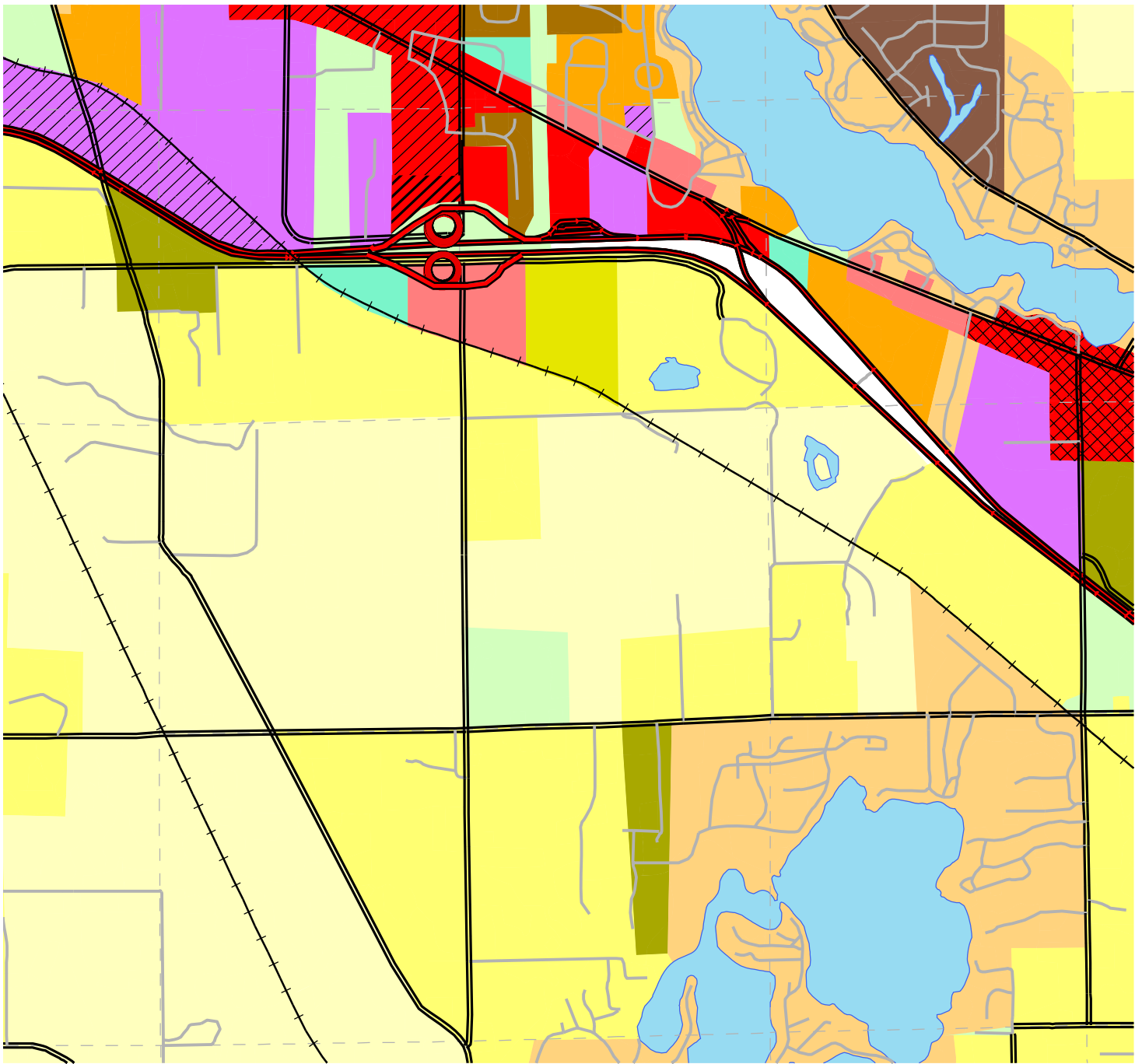
NOTE:  
SEE CONSTRUCTION SHEETS FOR MORE DETAIL ON PROPOSED ROW TIES  
SEE ALIGNMENT SHEETS FOR ALIGNMENT TIES TO OVERSIGHT CORNERS

GRAND RIVER AVE.

 Michigan Department of Transportation		 RS Engineering, Inc.		 SCALE (FT)		NO. DATE		PLAN REVISION		DATE: 04/27/09		DRAWING NO. SHEET NO.	
										W001 TSC: BR/10/10/10		ROW	
										DESIGN UNIT: K1001		VIC04	
RIGHT OF WAY VICINITY SHEET												CONS1:	
GRAND RIVER AVE AND LATSON ROAD													







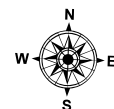
Map 11  
I-96 Interchange/Latson/  
Nixon Road Subarea Plan

- AGRICULTURE/COUNTRY ESTATE - 5 acres per unit
- LARGE LOT RURAL RESIDENTIAL - 2 acres per unit
- LOW DENSITY RESIDENTIAL - 1 acre per unit
- SMALL LOT SINGLE FAMILY RESIDENTIAL - 2 to 3 units per acre
- MEDIUM DENSITY RESIDENTIAL - 5 units per acre
- HIGH DENSITY RESIDENTIAL - 8 units per acre

- MANUFACTURED HOUSING
- NEIGHBORHOOD COMMERCIAL
- GENERAL COMMERCIAL
- REGIONAL COMMERCIAL
- MIXED-USE TOWN CENTER
- OFFICE/RESEARCH
- INDUSTRIAL
- PLANNED INDUSTRIAL
- PUBLIC/QUASI PUBLIC
- PRIVATE RECREATION



LSL Planning, Inc.



Data Sources:  
Base Map: Genoa Township

May 2006

